



DIVISION OF FAMILY RESOURCES

Kosciusko County Monthly Management Report April 2017

State of Indiana

Eric Holcomb
Governor

Family and Social Services Administration

Jennifer Walthall, M.D.
Secretary

Division of Family Resources

Adrienne Shields
Director

For questions regarding data on this report contact:
office.Communications@fssa.IN.gov



State of Indiana

Published May 2017



DIVISION OF FAMILY RESOURCES

Monthly Management Report

Reporting Month: April 2017

Location: Kosciusko County

TEMPORARY ASSISTANCE FOR NEEDY FAMILIES (TANF)

Child-Only and One-Parent Families	Apr 30, 2017	March 2017	April 2016	Annual Change
Number of families receiving TANF Grants	41	44	40	2.50%
Total number of grant recipients	89	106	82	8.54%
Number of adult grant recipients	13	16	11	18.18%
Number of child grant recipients	76	90	71	7.04%
Total payments	\$8,262	\$9,572	\$7,869	4.99%
Average payment per case	\$201.51	\$217.55	\$196.72	2.43%
Average payment per recipient	\$92.83	\$90.30	\$95.96	-3.26%
Number of cases with benefits reduced to zero	1	1	0	0%
Number of recipients with benefits reduced to zero	2	2	0	0%
Number of adult recipients with benefit reduced to zero	1	1	0	0%
Number of child recipients with benefit reduced to zero	1	1	0	0%

Two-Parent Families	Apr 30, 2017	March 2017	April 2016	Annual Change
Number of families receiving TANF Grants	6	6	6	0.00%
Total number of grant recipients	35	35	37	-5.41%
Number of adult grant recipients	12	12	12	0.00%
Number of child grant recipients	23	23	25	-8.00%
Total payments	\$1,481	\$2,690	\$1,057	40.11%
Average payment per case	\$246.83	\$448.33	\$176.17	40.11%
Average payment per recipient	\$42.31	\$76.86	\$28.57	48.12%
Number of cases with benefits reduced to zero	0	0	0	0%
Number of recipients with benefits reduced to zero	0	0	0	0%
Number of adult recipients with benefit reduced to zero	0	0	0	0%
Number of child recipients with benefit reduced to zero	0	0	0	0%

Note:

All data July 2014 and following will be broken out according to the new DFR region structure effective July 1 2014.

Source:



DIVISION OF FAMILY RESOURCES

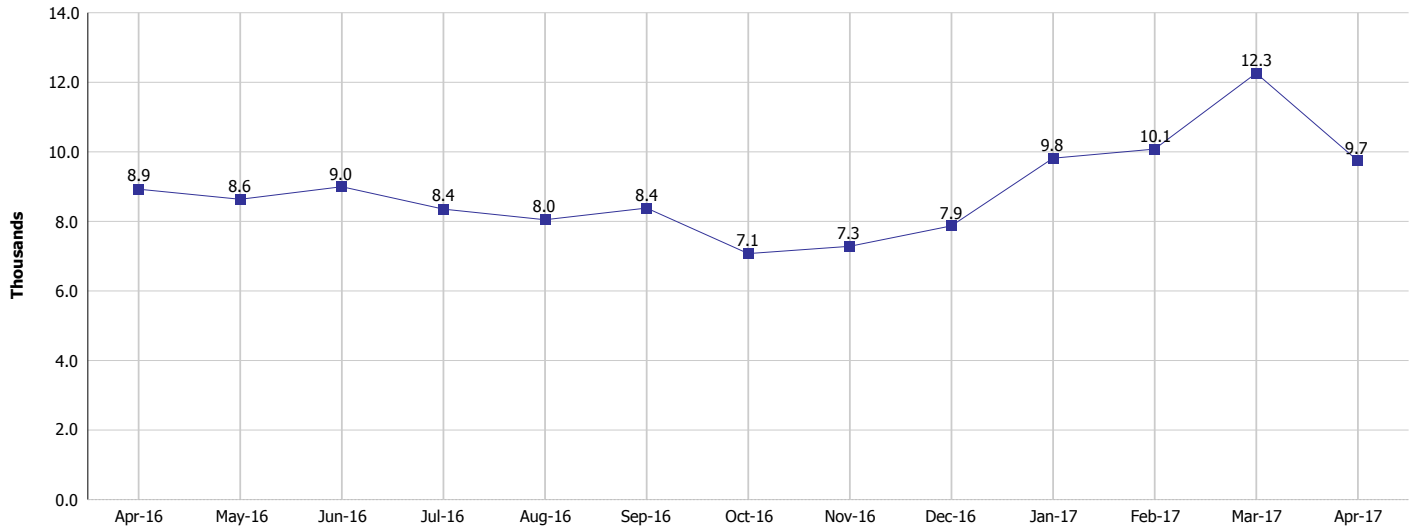
Monthly Management Report

Reporting Month: April 2017

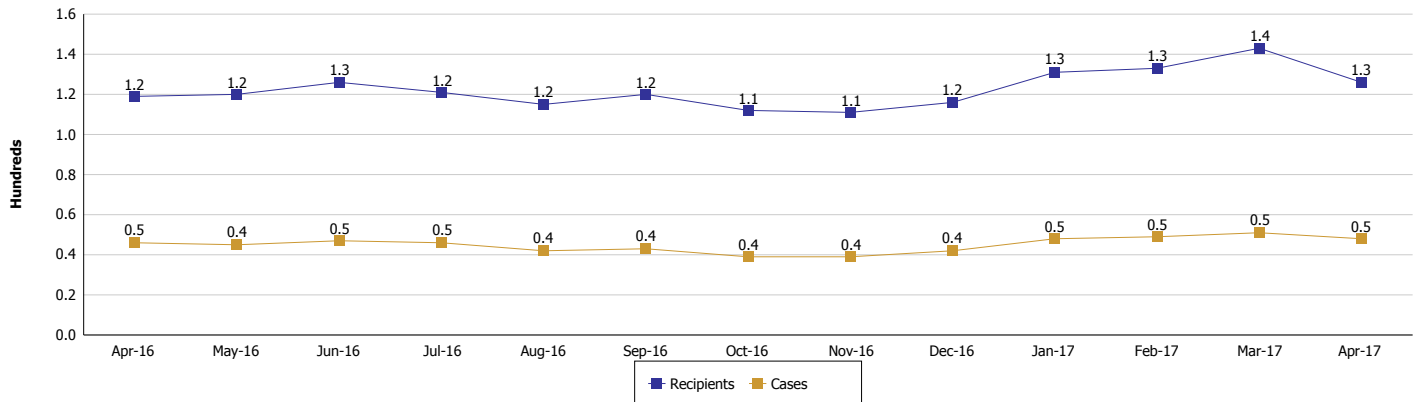
Location: Kosciusko County

TEMPORARY ASSISTANCE FOR NEEDY FAMILIES (TANF)

TANF Regular And TANF Two-Parent Cash Assistance



TANF Cases and Recipients (TANF Regular and TANF Two-Parent)



Note:

All data July 2014 and following will be broken out according to the new DFR region structure effective July 1 2014.



DIVISION OF FAMILY RESOURCES

Monthly Management Report

Reporting Month: April 2017

Location: Kosciusko County

SUPPLEMENTAL NUTRITION ASSISTANCE PROGRAM (SNAP)

	April 2017	March 2017	April 2016	Annual Change
Total issuance	\$582,421	\$617,065	\$690,238	-15.62%
Number of households receiving SNAP benefits	2,142	2,217	2,395	-10.56%
Number of recipients	5,214	5,423	5,916	-11.87%
Average issuance per household	\$271.91	\$278.33	\$288.2	-5.65%
Average issuance per recipient	\$111.7	\$113.79	\$116.67	-4.26%

Note:

All data July 2014 and following will be broken out according to the new DFR region structure effective July 1 2014.



DIVISION OF FAMILY RESOURCES

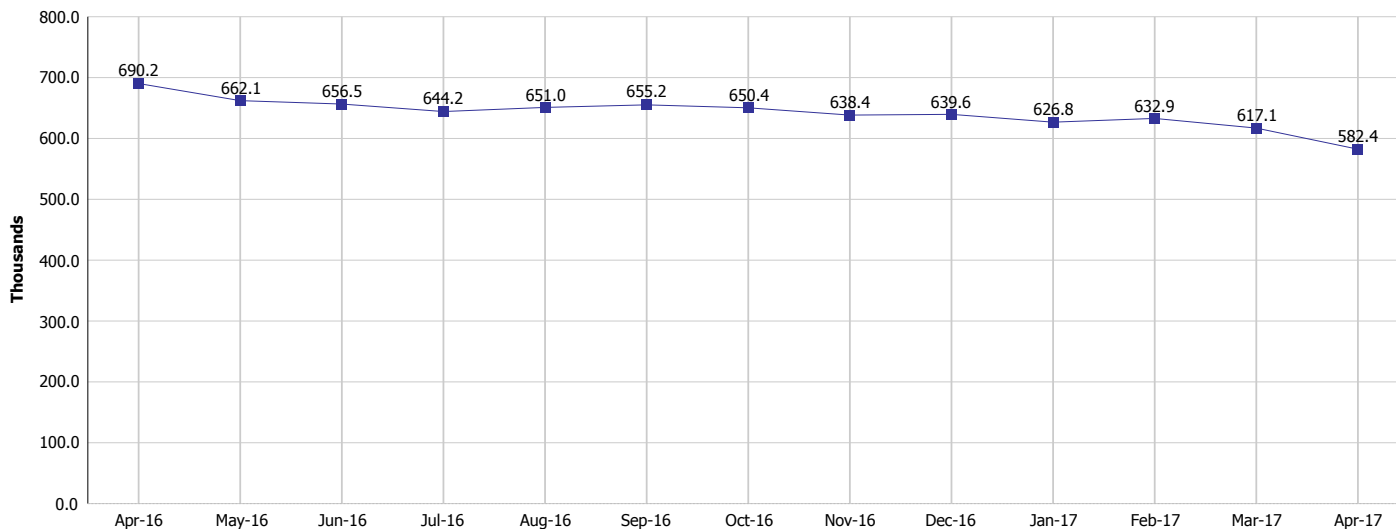
Monthly Management Report

Reporting Month: April 2017

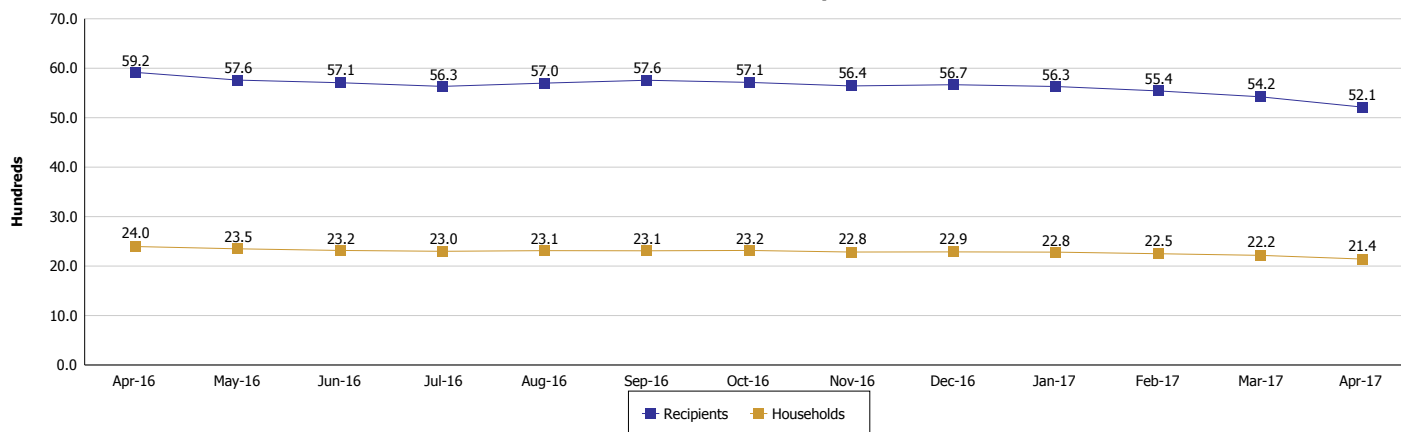
Location: Kosciusko County

SUPPLEMENTAL NUTRITION ASSISTANCE PROGRAM (SNAP)

SNAP Issuance



SNAP Households and Recipients



Note:

All data July 2014 and following will be broken out according to the new DFR region structure effective July 1 2014.



DIVISION OF FAMILY RESOURCES

Monthly Management Report

Reporting Month: April 2017

Location: Kosciusko County

HIP 2.0 and SNAP

	April 2017	March 2017	April 2016	Annual Change
Total HIP 2.0 Members	3,818	3,830	3,507	8.87%
HIP Members also SNAP Recipients	1,208	1,250	1,278	-5.48%
Percentage HIP Members SNAP Recipients	31.6%	32.6%	36.4%	4.82%
HIP Members SNAP ABAWDs	23	35	32	-28.12%
Percentage HIP Members SNAP ABAWDs	0.6%	0.9%	0.9%	4.82%

Note:

All data July 2014 and following will be broken out according to the new DFR region structure effective July 1 2014.



DIVISION OF FAMILY RESOURCES

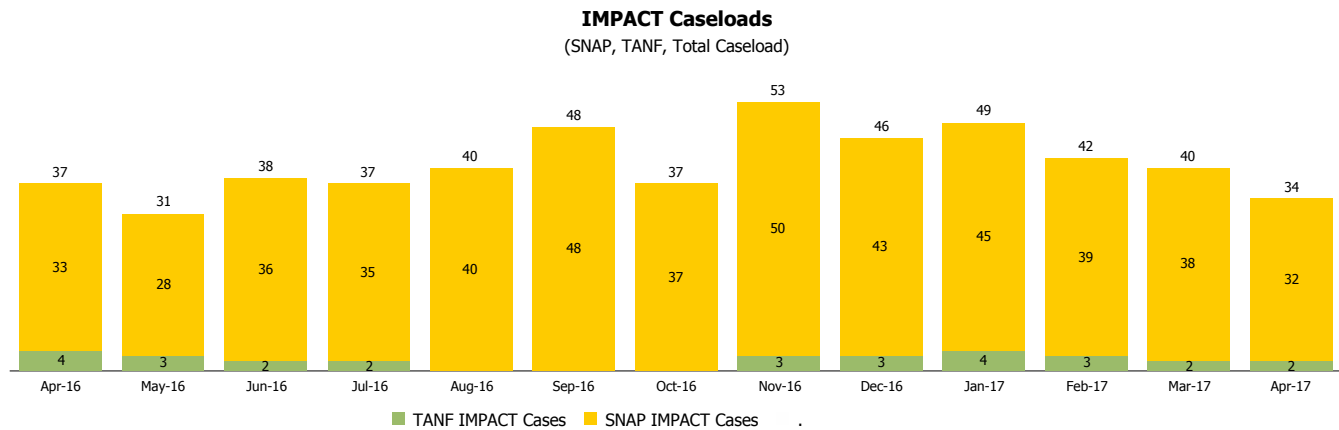
Monthly Management Report

Reporting Month: April 2017

Location: Kosciusko County

INDIANA MANPOWER PLACEMENT AND COMPREHENSIVE TRAINING (IMPACT)

	April 2017	March 2017	April 2016	Annual Change
Number of IMPACT cases	34	40	37	-8.11%
Number of TANF IMPACT adults	2	2	4	-50.00%
Number of SNAP IMPACT Cases	32	38	33	-3.03%
Total number of adults employed	20	13	10	100.00%
Number of TANF IMPACT adults newly employed (within past 30 days)	1	3	0	
Number of SNAP IMPACT adults employed	19	10	10	90.00%
Total number of adults ineligible due to employment	64	46	65	-1.54%
Number of TANF adults ineligible due to employment	0	0	0	
Number of SNAP adults ineligible due to employment	64	46	65	-1.54%



Note:

All data July 2014 and following will be broken out according to the new DFR region structure effective July 1 2014.