



DIVISION OF FAMILY RESOURCES

Johnson County Monthly Management Report February 2018

State of Indiana

Eric Holcomb
Governor

Family and Social Services Administration

Jennifer Walthall, M.D.
Secretary

Division of Family Resources

Adrienne Shields
Director

For questions regarding data on this report contact:
office.Communications@fssa.IN.gov



State of Indiana

Published March 2018



DIVISION OF FAMILY RESOURCES

Monthly Management Report

Reporting Month: February 2018

Location: Johnson County

TEMPORARY ASSISTANCE FOR NEEDY FAMILIES (TANF)

Child-Only and One-Parent Families	Feb 28, 2018	January 2018	February 2017	Annual Change
Number of families receiving TANF Grants	78	75	88	-11.36%
Total number of grant recipients	160	153	169	-5.33%
Number of adult grant recipients	18	18	20	-10.00%
Number of child grant recipients	142	135	149	-4.70%
Total payments	\$16,472	\$15,062	\$16,660	-1.13%
Average payment per case	\$211.18	\$200.83	\$189.32	11.55%
Average payment per recipient	\$102.95	\$98.44	\$98.58	4.43%
Number of cases with benefits reduced to zero	2	2	2	0.00%
Number of recipients with benefits reduced to zero	4	4	4	0.00%
Number of adult recipients with benefit reduced to zero	1	1	0	0%
Number of child recipients with benefit reduced to zero	3	3	4	-25.00%

Two-Parent Families	Feb 28, 2018	January 2018	February 2017	Annual Change
Number of families receiving TANF Grants	1	1	3	-66.67%
Total number of grant recipients	2	2	9	-77.78%
Number of adult grant recipients	0	0	4	-100.00%
Number of child grant recipients	2	2	5	-60.00%
Total payments	\$198	\$198	\$496	-60.08%
Average payment per case	\$198.00	\$198.00	\$165.33	19.76%
Average payment per recipient	\$99.00	\$99.00	\$55.11	79.64%
Number of cases with benefits reduced to zero	0	0	1	-100.00%
Number of recipients with benefits reduced to zero	0	0	5	-100.00%
Number of adult recipients with benefit reduced to zero	0	0	2	-100.00%
Number of child recipients with benefit reduced to zero	0	0	3	-100.00%

Note:

All data July 2014 and following will be broken out according to the new DFR region structure effective July 1 2014.

Source:



DIVISION OF FAMILY RESOURCES

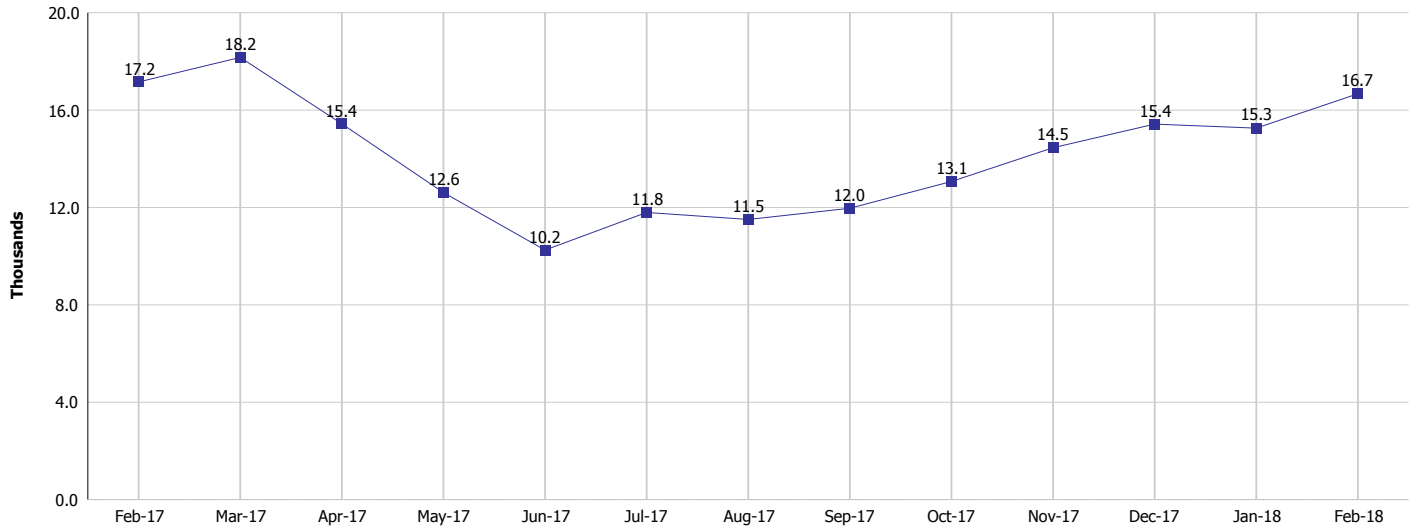
Monthly Management Report

Reporting Month: February 2018

Location: Johnson County

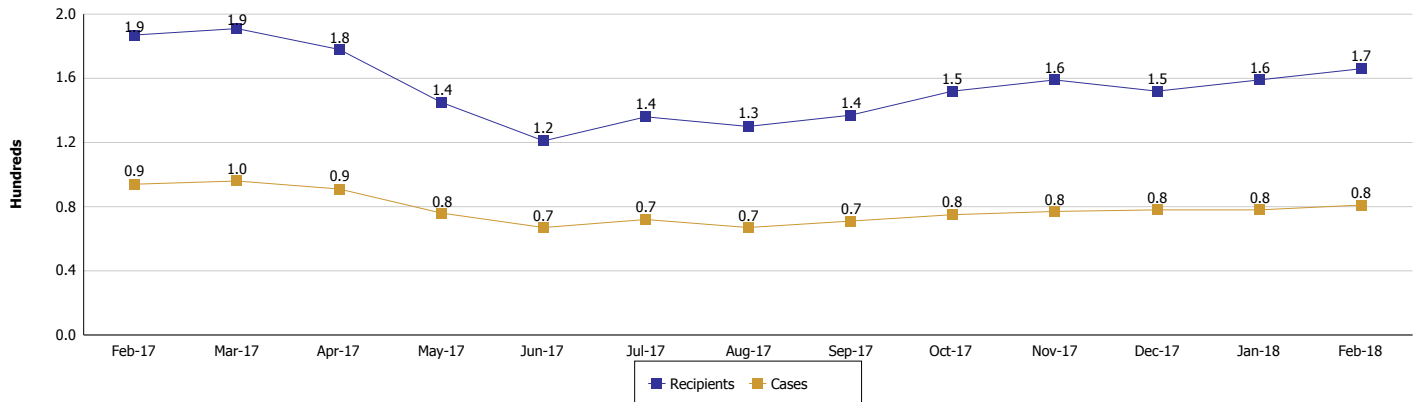
TEMPORARY ASSISTANCE FOR NEEDY FAMILIES (TANF)

TANF Regular And TANF Two-Parent Cash Assistance



TANF Cases and Recipients

(TANF Regular and TANF Two-Parent)



Note:

All data July 2014 and following will be broken out according to the new DFR region structure effective July 1 2014.



DIVISION OF FAMILY RESOURCES

Monthly Management Report

Reporting Month: February 2018

Location: Johnson County

SUPPLEMENTAL NUTRITION ASSISTANCE PROGRAM (SNAP)

	February 2018	January 2018	February 2017	Annual Change
Total issuance	\$1,038,356	\$1,043,489	\$1,075,969	-3.50%
Number of households receiving SNAP benefits	3,710	3,694	3,827	-3.06%
Number of recipients	8,768	8,747	9,165	-4.33%
Average issuance per household	\$279.88	\$282.48	\$281.15	-0.45%
Average issuance per recipient	\$118.43	\$119.3	\$117.4	0.88%

Note:

All data July 2014 and following will be broken out according to the new DFR region structure effective July 1 2014.



DIVISION OF FAMILY RESOURCES

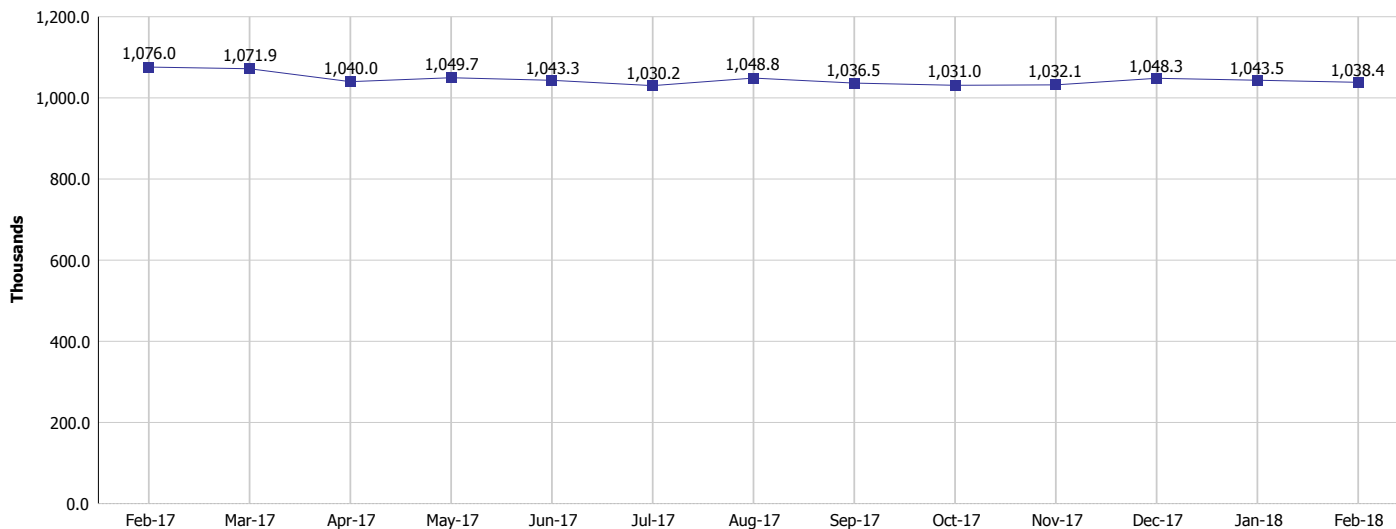
Monthly Management Report

Reporting Month: February 2018

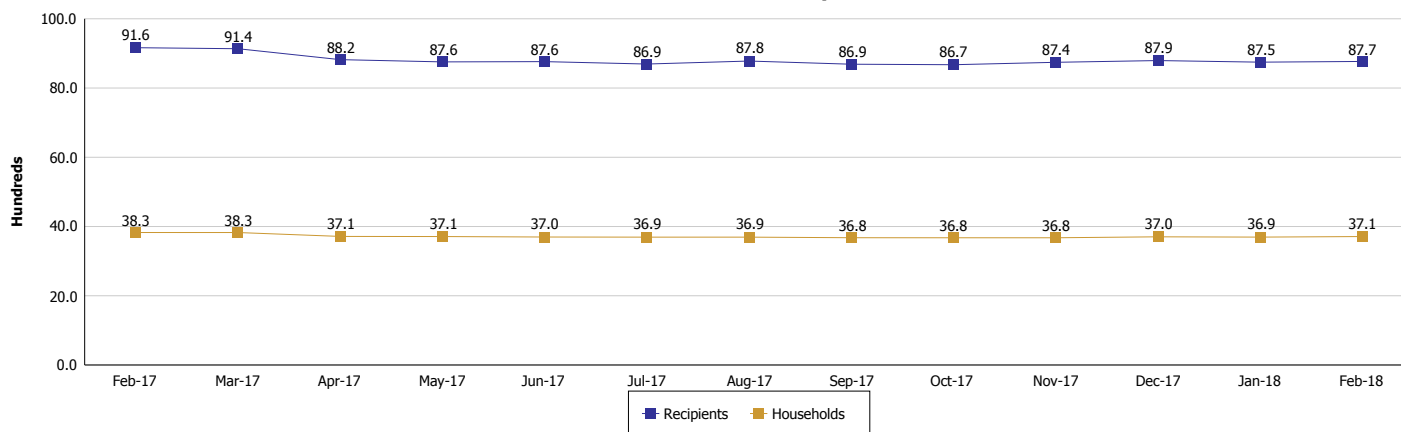
Location: Johnson County

SUPPLEMENTAL NUTRITION ASSISTANCE PROGRAM (SNAP)

SNAP Issuance



SNAP Households and Recipients



Note:

All data July 2014 and following will be broken out according to the new DFR region structure effective July 1 2014.



DIVISION OF FAMILY RESOURCES

Monthly Management Report

Reporting Month: February 2018

Location: Johnson County

HIP 2.0 and SNAP

	February 2018	January 2018	February 2017	Annual Change
Total HIP 2.0 Members	7,904	7,801	7,398	6.84%
HIP Members also SNAP Recipients	2,108	2,093	2,154	-2.14%
Percentage HIP Members SNAP Recipients	26.7%	26.8%	29.1%	4.78%
HIP Members SNAP ABAWDs	40	43	41	-2.44%
Percentage HIP Members SNAP ABAWDs	0.5%	0.6%	0.6%	4.78%

Note:

All data July 2014 and following will be broken out according to the new DFR region structure effective July 1 2014.



DIVISION OF FAMILY RESOURCES

Monthly Management Report

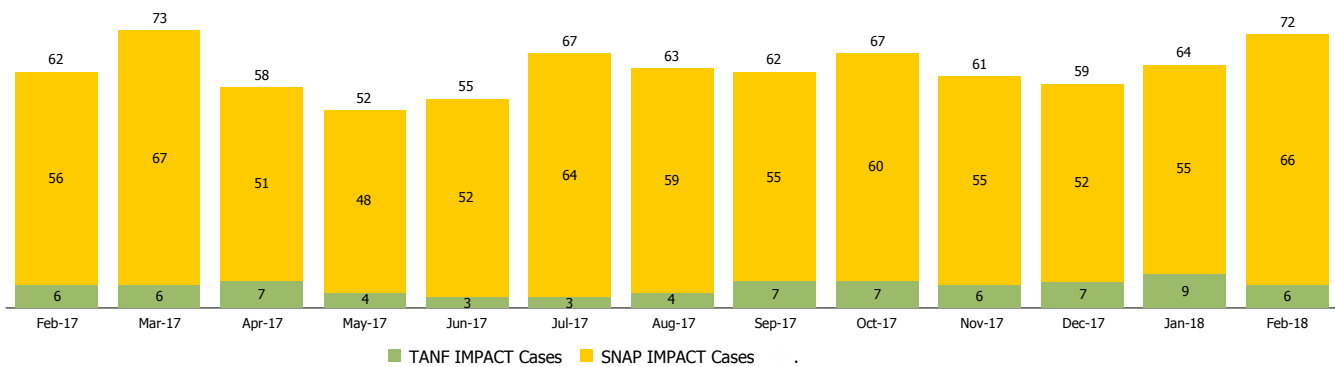
Reporting Month: February 2018

Location: Johnson County

INDIANA MANPOWER PLACEMENT AND COMPREHENSIVE TRAINING (IMPACT)

	February 2018	January 2018	February 2017	Annual Change
Number of IMPACT cases	72	64	62	16.13%
Number of TANF IMPACT adults	6	9	6	0.00%
Number of SNAP IMPACT Cases	66	55	56	17.86%
Total number of adults employed	11	7	22	-50.00%
Number of TANF IMPACT adults newly employed (within past 30 days)	1	2	2	-50.00%
Number of SNAP IMPACT adults employed	10	5	20	-50.00%
Total number of adults ineligible due to employment	50	71	66	-24.24%
Number of TANF adults ineligible due to employment	0	0	0	
Number of SNAP adults ineligible due to employment	50	71	66	-24.24%

IMPACT Caseloads
(SNAP, TANF, Total Caseload)



Note:

All data July 2014 and following will be broken out according to the new DFR region structure effective July 1 2014.