



DIVISION OF FAMILY RESOURCES

Jackson County Monthly Management Report April 2017

State of Indiana

Eric Holcomb
Governor

Family and Social Services Administration

Jennifer Walthall, M.D.
Secretary

Division of Family Resources

Adrienne Shields
Director

For questions regarding data on this report contact:
office.Communications@fssa.IN.gov



State of Indiana

Published May 2017



DIVISION OF FAMILY RESOURCES

Monthly Management Report

Reporting Month: April 2017

Location: Jackson County

TEMPORARY ASSISTANCE FOR NEEDY FAMILIES (TANF)

Child-Only and One-Parent Families	Apr 30, 2017	March 2017	April 2016	Annual Change
Number of families receiving TANF Grants	72	80	85	-15.29%
Total number of grant recipients	143	161	172	-16.86%
Number of adult grant recipients	23	25	31	-25.81%
Number of child grant recipients	120	136	141	-14.89%
Total payments	\$12,936	\$14,425	\$15,705	-17.63%
Average payment per case	\$179.67	\$180.31	\$184.76	-2.76%
Average payment per recipient	\$90.46	\$89.60	\$91.31	-0.93%
Number of cases with benefits reduced to zero	1	0	1	0.00%
Number of recipients with benefits reduced to zero	1	0	3	-66.67%
Number of adult recipients with benefit reduced to zero	0	0	0	0%
Number of child recipients with benefit reduced to zero	1	0	3	-66.67%

Two-Parent Families	Apr 30, 2017	March 2017	April 2016	Annual Change
Number of families receiving TANF Grants	4	4	5	-20.00%
Total number of grant recipients	23	23	24	-4.17%
Number of adult grant recipients	8	8	10	-20.00%
Number of child grant recipients	15	15	14	7.14%
Total payments	\$1,135	\$1,135	\$784	44.77%
Average payment per case	\$283.75	\$283.75	\$156.80	80.96%
Average payment per recipient	\$49.35	\$49.35	\$32.67	51.06%
Number of cases with benefits reduced to zero	0	0	0	0%
Number of recipients with benefits reduced to zero	0	0	0	0%
Number of adult recipients with benefit reduced to zero	0	0	0	0%
Number of child recipients with benefit reduced to zero	0	0	0	0%

Note:

All data July 2014 and following will be broken out according to the new DFR region structure effective July 1 2014.

Source:



DIVISION OF FAMILY RESOURCES

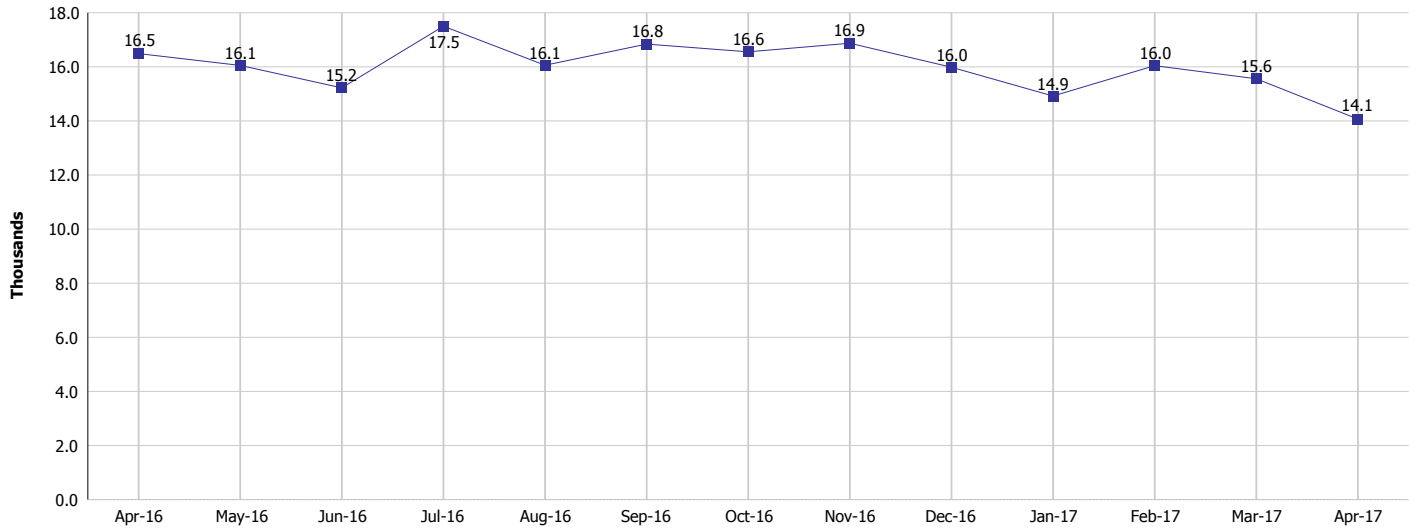
Monthly Management Report

Reporting Month: April 2017

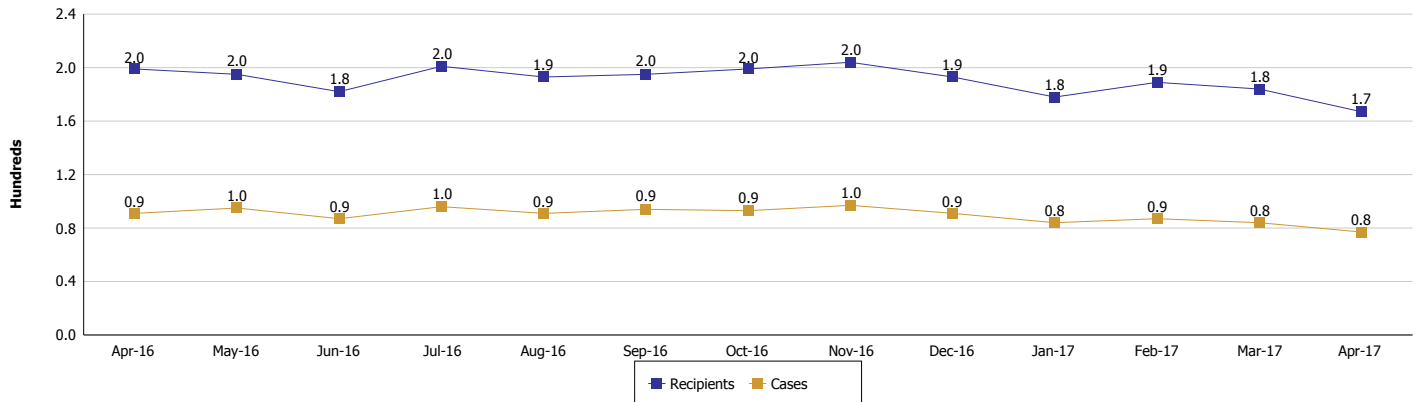
Location: Jackson County

TEMPORARY ASSISTANCE FOR NEEDY FAMILIES (TANF)

TANF Regular And TANF Two-Parent Cash Assistance



TANF Cases and Recipients
(TANF Regular and TANF Two-Parent)



Note:

All data July 2014 and following will be broken out according to the new DFR region structure effective July 1 2014.



DIVISION OF FAMILY RESOURCES

Monthly Management Report

Reporting Month: April 2017

Location: Jackson County

SUPPLEMENTAL NUTRITION ASSISTANCE PROGRAM (SNAP)

	April 2017	March 2017	April 2016	Annual Change
Total issuance	\$434,170	\$455,787	\$538,280	-19.34%
Number of households receiving SNAP benefits	1,756	1,820	2,081	-15.62%
Number of recipients	3,819	3,972	4,574	-16.51%
Average issuance per household	\$247.25	\$250.43	\$258.66	-4.41%
Average issuance per recipient	\$113.69	\$114.75	\$117.68	-3.39%

Note:

All data July 2014 and following will be broken out according to the new DFR region structure effective July 1 2014.



DIVISION OF FAMILY RESOURCES

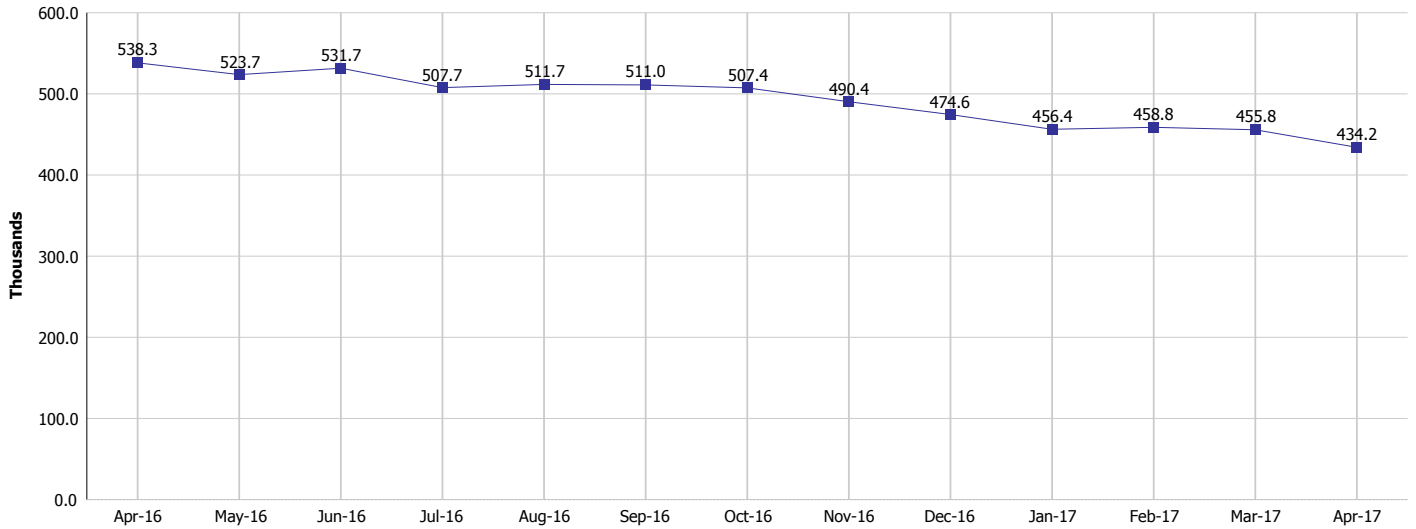
Monthly Management Report

Reporting Month: April 2017

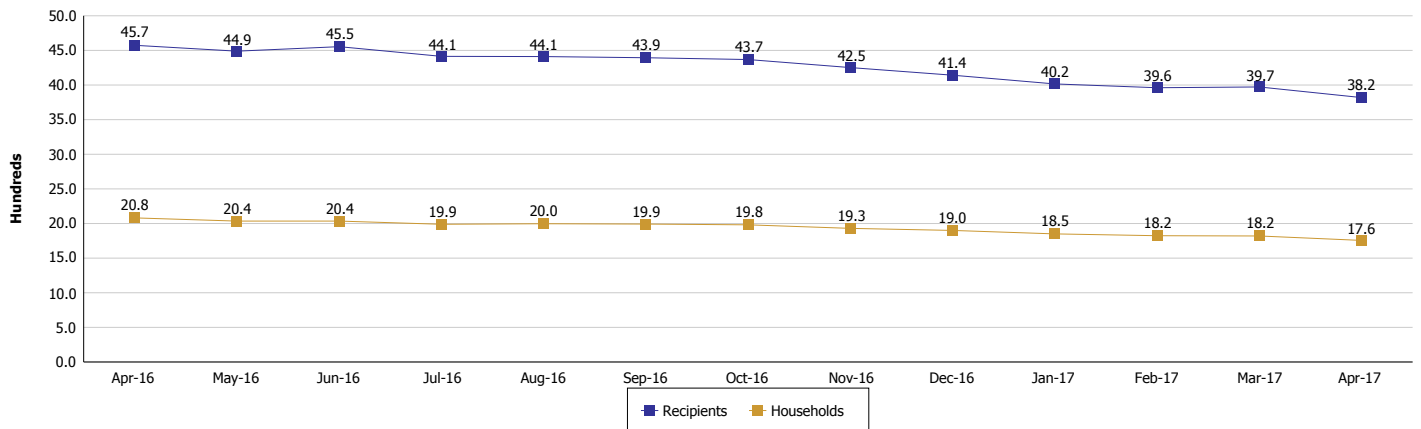
Location: Jackson County

SUPPLEMENTAL NUTRITION ASSISTANCE PROGRAM (SNAP)

SNAP Issuance



SNAP Households and Recipients



Note:

All data July 2014 and following will be broken out according to the new DFR region structure effective July 1 2014.



DIVISION OF FAMILY RESOURCES

Monthly Management Report

Reporting Month: April 2017

Location: Jackson County

HIP 2.0 and SNAP

	April 2017	March 2017	April 2016	Annual Change
Total HIP 2.0 Members	2,581	2,599	2,260	14.20%
HIP Members also SNAP Recipients	808	845	956	-15.48%
Percentage HIP Members SNAP Recipients	31.3%	32.5%	42.3%	4.25%
HIP Members SNAP ABAWDs	19	19	53	-64.15%
Percentage HIP Members SNAP ABAWDs	0.7%	0.7%	2.3%	4.25%

Note:

All data July 2014 and following will be broken out according to the new DFR region structure effective July 1 2014.



DIVISION OF FAMILY RESOURCES

Monthly Management Report

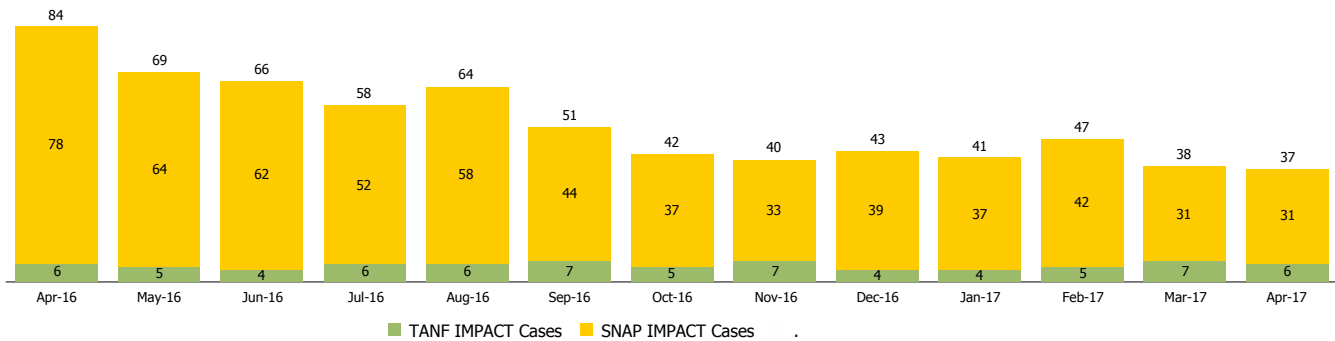
Reporting Month: April 2017

Location: Jackson County

INDIANA MANPOWER PLACEMENT AND COMPREHENSIVE TRAINING (IMPACT)

	April 2017	March 2017	April 2016	Annual Change
Number of IMPACT cases	37	38	84	-55.95%
Number of TANF IMPACT adults	6	7	6	0.00%
Number of SNAP IMPACT Cases	31	31	78	-60.26%
Total number of adults employed	19	14	13	46.15%
Number of TANF IMPACT adults newly employed (within past 30 days)	4	1	0	
Number of SNAP IMPACT adults employed	15	13	13	15.38%
Total number of adults ineligible due to employment	35	30	42	-16.67%
Number of TANF adults ineligible due to employment	0	0	0	
Number of SNAP adults ineligible due to employment	35	30	42	-16.67%

IMPACT Caseloads
(SNAP, TANF, Total Caseload)



Note:

All data July 2014 and following will be broken out according to the new DFR region structure effective July 1 2014.