



## DIVISION OF FAMILY RESOURCES

# Huntington County Monthly Management Report July 2017

### State of Indiana

Eric Holcomb  
Governor

### Family and Social Services Administration

Jennifer Walthall, M.D.  
Secretary

### Division of Family Resources

Adrienne Shields  
Director

For questions regarding data on this report contact:  
[office.Communications@fssa.IN.gov](mailto:office.Communications@fssa.IN.gov)



## State of Indiana

Published August 2017



## DIVISION OF FAMILY RESOURCES

### Monthly Management Report

Reporting Month: July 2017

Location: Huntington County

#### TEMPORARY ASSISTANCE FOR NEEDY FAMILIES (TANF)

Child-Only and One-Parent Families	Jul 31, 2017	June 2017	July 2016	Annual Change
Number of families receiving TANF Grants	29	26	30	-3.33%
Total number of grant recipients	58	52	62	-6.45%
Number of adult grant recipients	8	7	9	-11.11%
Number of child grant recipients	50	45	53	-5.66%
Total payments	\$5,404	\$5,260	\$5,453	-0.90%
Average payment per case	\$186.34	\$202.31	\$181.77	2.52%
Average payment per recipient	\$93.17	\$101.15	\$87.95	5.94%
Number of cases with benefits reduced to zero	0	0	0	0%
Number of recipients with benefits reduced to zero	0	0	0	0%
Number of adult recipients with benefit reduced to zero	0	0	0	0%
Number of child recipients with benefit reduced to zero	0	0	0	0%

Two-Parent Families	Jul 31, 2017	June 2017	July 2016	Annual Change
Number of families receiving TANF Grants	0	0	0	0%
Total number of grant recipients	0	0	0	0%
Number of adult grant recipients	0	0	0	0%
Number of child grant recipients	0	0	0	0%
Total payments	\$0	\$0	\$0	0%
Average payment per case	\$0.00	\$0.00	\$0.00	0.00%
Average payment per recipient	\$0.00	\$0.00	\$0.00	0.00%
Number of cases with benefits reduced to zero	0	0	0	0%
Number of recipients with benefits reduced to zero	0	0	0	0%
Number of adult recipients with benefit reduced to zero	0	0	0	0%
Number of child recipients with benefit reduced to zero	0	0	0	0%

**Note:**

All data July 2014 and following will be broken out according to the new DFR region structure effective July 1 2014.

Source:



## DIVISION OF FAMILY RESOURCES

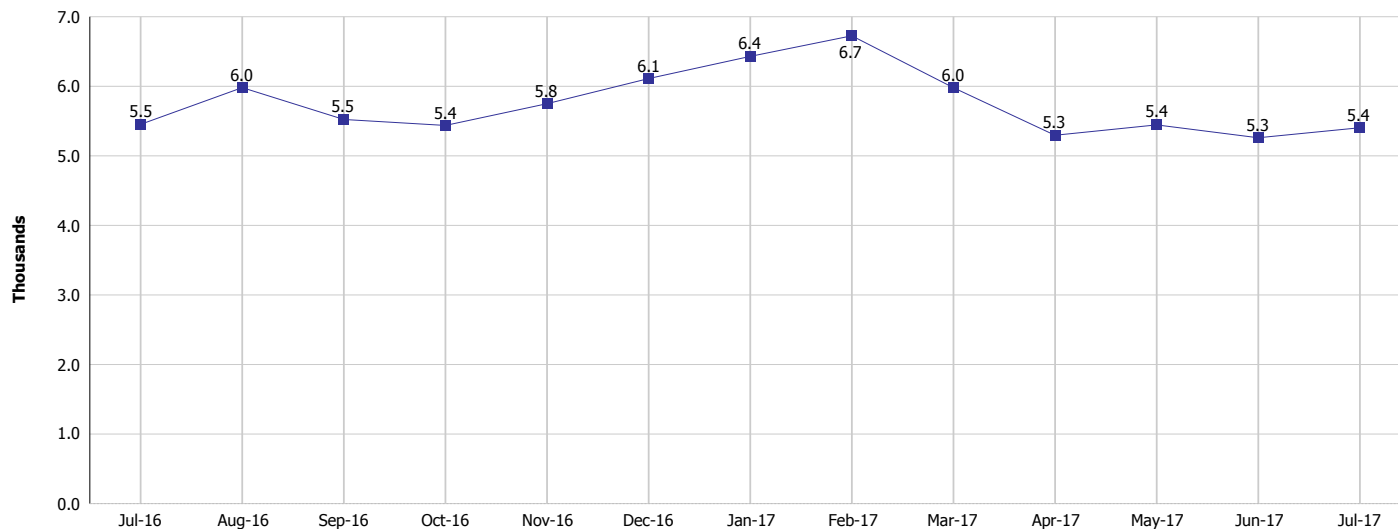
### Monthly Management Report

Reporting Month: July 2017

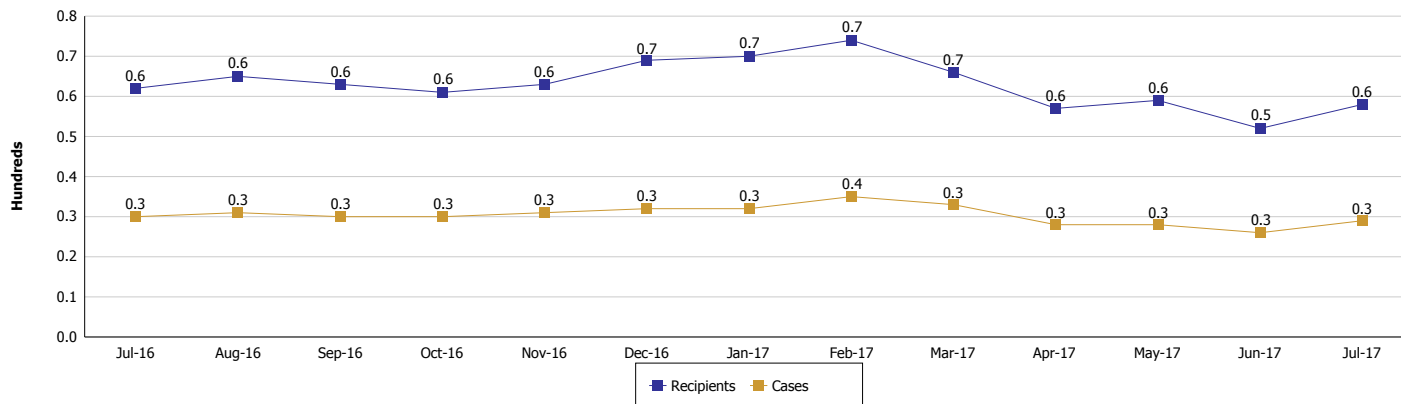
Location: Huntington County

#### TEMPORARY ASSISTANCE FOR NEEDY FAMILIES (TANF)

#### TANF Regular And TANF Two-Parent Cash Assistance



#### TANF Cases and Recipients (TANF Regular and TANF Two-Parent)



**Note:**

All data July 2014 and following will be broken out according to the new DFR region structure effective July 1 2014.



## DIVISION OF FAMILY RESOURCES

### Monthly Management Report

Reporting Month: July 2017

Location: Huntington County

#### SUPPLEMENTAL NUTRITION ASSISTANCE PROGRAM (SNAP)

	July 2017	June 2017	July 2016	Annual Change
Total issuance	\$334,328	\$334,958	\$365,552	-8.54%
Number of households receiving SNAP benefits	1,377	1,379	1,431	-3.77%
Number of recipients	2,985	2,981	3,240	-7.87%
Average issuance per household	\$242.79	\$242.9	\$255.45	-4.96%
Average issuance per recipient	\$112	\$112.36	\$112.82	-0.73%

**Note:**

All data July 2014 and following will be broken out according to the new DFR region structure effective July 1 2014.



## DIVISION OF FAMILY RESOURCES

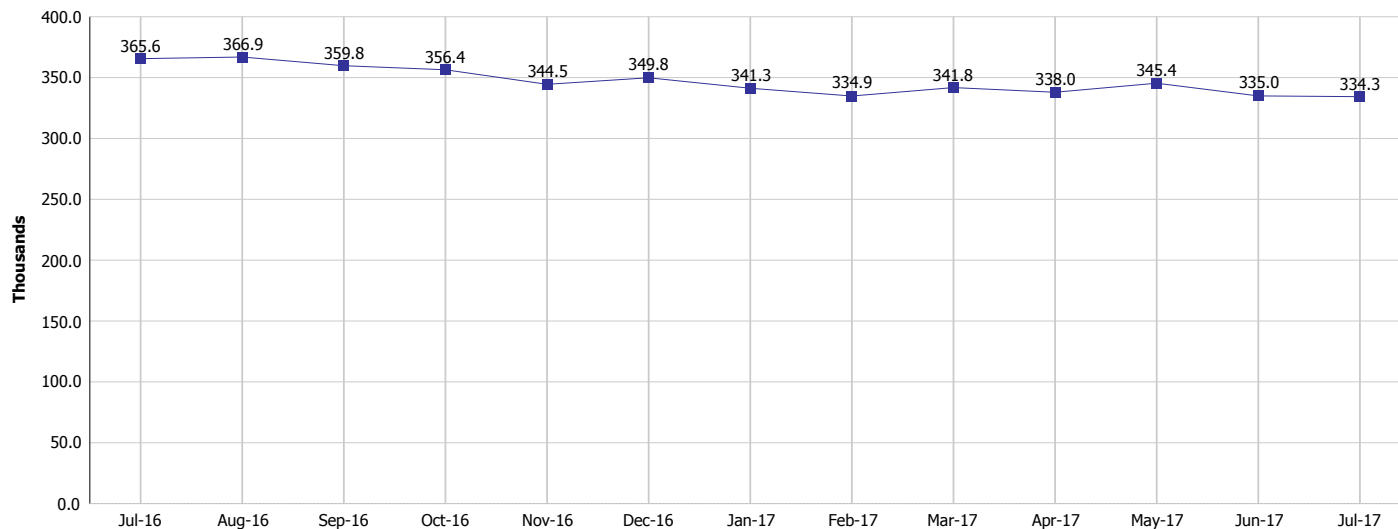
### Monthly Management Report

Reporting Month: July 2017

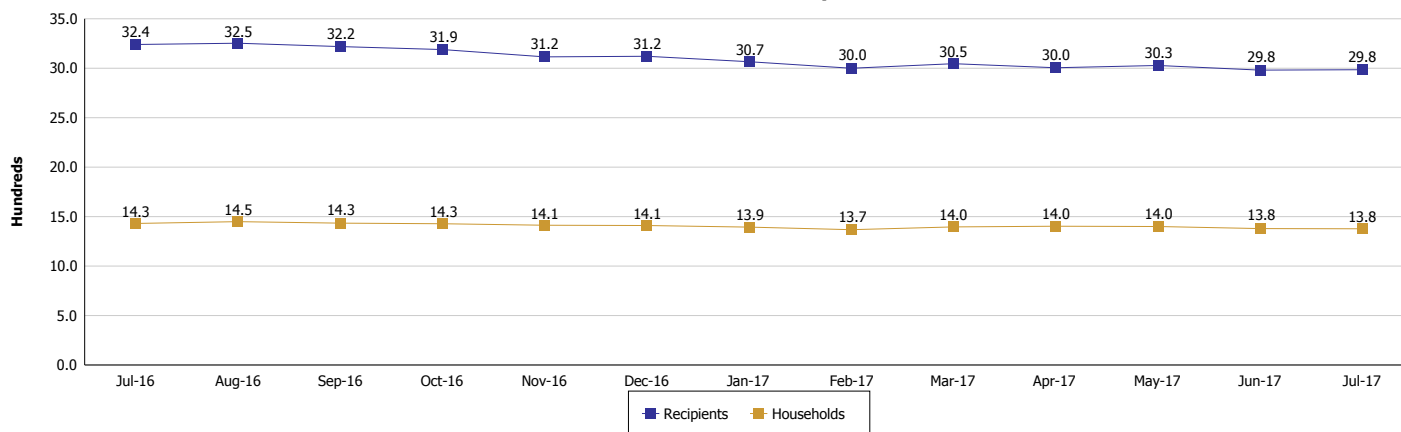
Location: Huntington County

#### SUPPLEMENTAL NUTRITION ASSISTANCE PROGRAM (SNAP)

#### SNAP Issuance



#### SNAP Households and Recipients



**Note:**

All data July 2014 and following will be broken out according to the new DFR region structure effective July 1 2014.



## DIVISION OF FAMILY RESOURCES

### Monthly Management Report

Reporting Month: July 2017

Location: Huntington County

#### HIP 2.0 and SNAP

	July 2017	June 2017	July 2016	Annual Change
Total HIP 2.0 Members	2,144	2,144	1,934	10.86%
HIP Members also SNAP Recipients	778	805	805	-3.35%
Percentage HIP Members SNAP Recipients	36.3%	37.5%	41.6%	6.06%
HIP Members SNAP ABAWDs	18	21	33	-45.45%
Percentage HIP Members SNAP ABAWDs	0.8%	1.0%	1.7%	6.06%

**Note:**

All data July 2014 and following will be broken out according to the new DFR region structure effective July 1 2014.



**DIVISION OF FAMILY RESOURCES**

**Monthly Management Report**

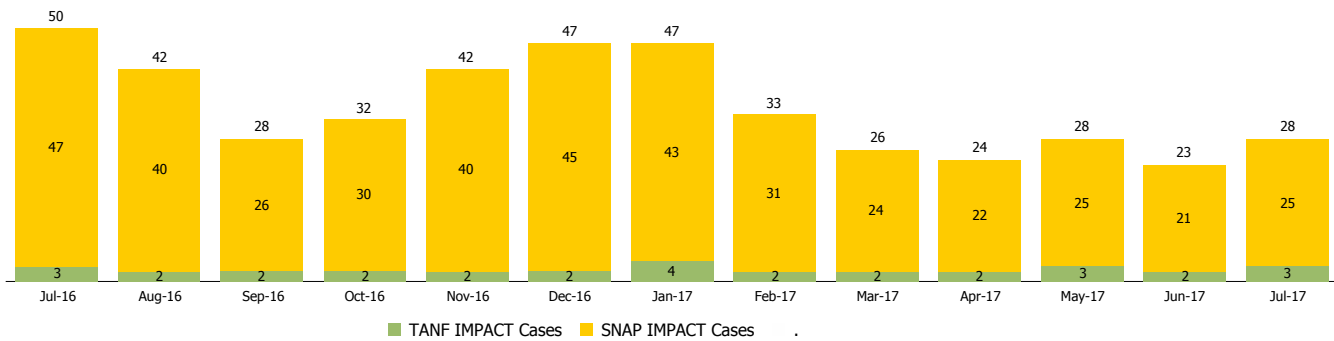
Reporting Month: July 2017

Location: Huntington County

**INDIANA MANPOWER PLACEMENT AND COMPREHENSIVE TRAINING (IMPACT)**

	July 2017	June 2017	July 2016	Annual Change
Number of IMPACT cases	28	23	50	-44.00%
Number of TANF IMPACT adults	3	2	3	0.00%
Number of SNAP IMPACT Cases	25	21	47	-46.81%
Total number of adults employed	4	7	17	-76.47%
Number of TANF IMPACT adults newly employed (within past 30 days)	0	0	1	-100.00%
Number of SNAP IMPACT adults employed	4	7	16	-75.00%
Total number of adults ineligible due to employment	40	39	39	2.56%
Number of TANF adults ineligible due to employment	0	0	0	
Number of SNAP adults ineligible due to employment	40	39	39	2.56%

**IMPACT Caseloads**  
(SNAP, TANF, Total Caseload)



**Note:**

All data July 2014 and following will be broken out according to the new DFR region structure effective July 1 2014.