



DIVISION OF FAMILY RESOURCES

Howard County Monthly Management Report May 2017

State of Indiana

Eric Holcomb
Governor

Family and Social Services Administration

Jennifer Walthall, M.D.
Secretary

Division of Family Resources

Adrienne Shields
Director

For questions regarding data on this report contact:
office.Communications@fssa.IN.gov



State of Indiana

Published June 2017



DIVISION OF FAMILY RESOURCES

Monthly Management Report

Reporting Month: May 2017

Location: Howard County

TEMPORARY ASSISTANCE FOR NEEDY FAMILIES (TANF)

Child-Only and One-Parent Families	May 31, 2017	April 2017	May 2016	Annual Change
Number of families receiving TANF Grants	128	138	143	-10.49%
Total number of grant recipients	262	281	308	-14.94%
Number of adult grant recipients	37	39	43	-13.95%
Number of child grant recipients	225	242	265	-15.09%
Total payments	\$23,617	\$25,155	\$27,396	-13.79%
Average payment per case	\$184.51	\$182.28	\$191.58	-3.69%
Average payment per recipient	\$90.14	\$89.52	\$88.95	1.34%
Number of cases with benefits reduced to zero	2	1	2	0.00%
Number of recipients with benefits reduced to zero	4	3	4	0.00%
Number of adult recipients with benefit reduced to zero	1	1	1	0.00%
Number of child recipients with benefit reduced to zero	3	2	3	0.00%

Two-Parent Families	May 31, 2017	April 2017	May 2016	Annual Change
Number of families receiving TANF Grants	2	2	3	-33.33%
Total number of grant recipients	3	3	8	-62.50%
Number of adult grant recipients	0	0	2	-100.00%
Number of child grant recipients	3	3	6	-50.00%
Total payments	\$337	\$337	\$288	17.01%
Average payment per case	\$168.50	\$168.50	\$96.00	75.52%
Average payment per recipient	\$112.33	\$112.33	\$36.00	212.04%
Number of cases with benefits reduced to zero	0	0	0	0%
Number of recipients with benefits reduced to zero	0	0	0	0%
Number of adult recipients with benefit reduced to zero	0	0	0	0%
Number of child recipients with benefit reduced to zero	0	0	0	0%

Note:

All data July 2014 and following will be broken out according to the new DFR region structure effective July 1 2014.

Source:



DIVISION OF FAMILY RESOURCES

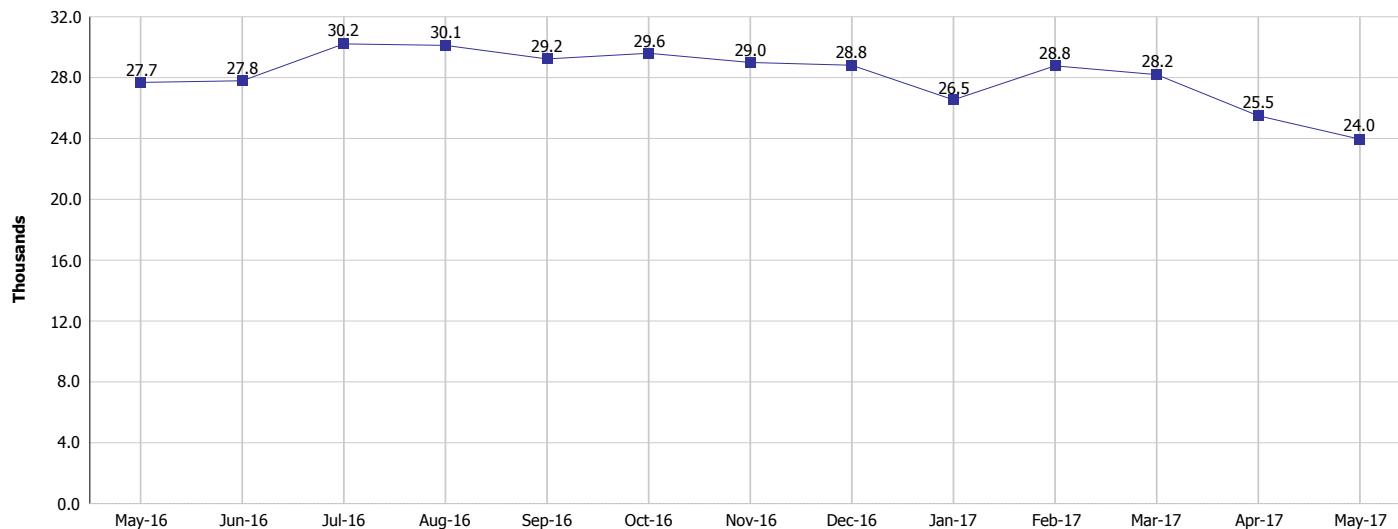
Monthly Management Report

Reporting Month: May 2017

Location: Howard County

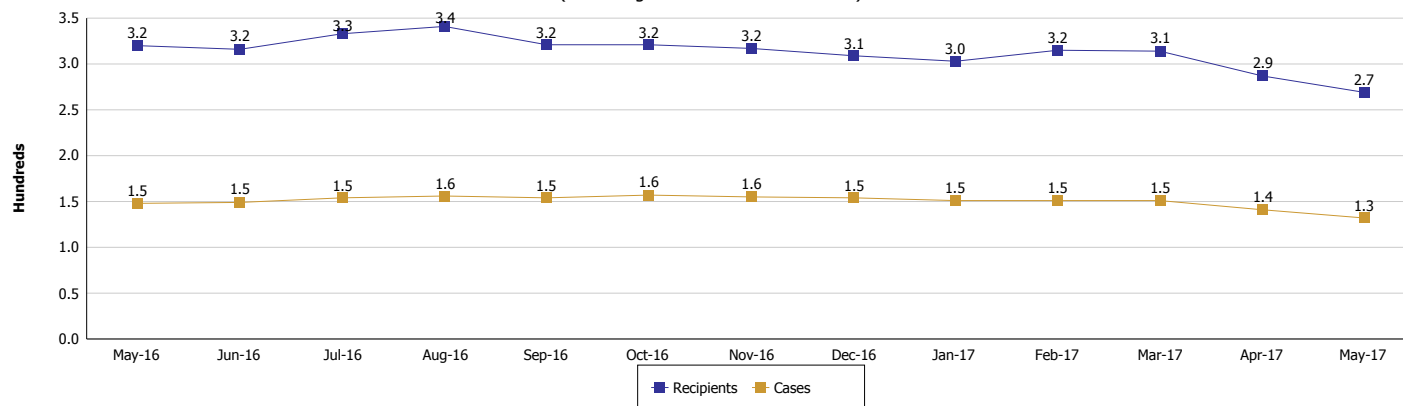
TEMPORARY ASSISTANCE FOR NEEDY FAMILIES (TANF)

TANF Regular And TANF Two-Parent Cash Assistance



TANF Cases and Recipients

(TANF Regular and TANF Two-Parent)



Note:

All data July 2014 and following will be broken out according to the new DFR region structure effective July 1 2014.



DIVISION OF FAMILY RESOURCES

Monthly Management Report

Reporting Month: May 2017

Location: Howard County

SUPPLEMENTAL NUTRITION ASSISTANCE PROGRAM (SNAP)

	May 2017	April 2017	May 2016	Annual Change
Total issuance	\$1,295,360	\$1,253,883	\$1,375,475	-5.82%
Number of households receiving SNAP benefits	4,849	4,792	5,204	-6.82%
Number of recipients	10,783	10,605	11,527	-6.45%
Average issuance per household	\$267.14	\$261.66	\$264.31	1.07%
Average issuance per recipient	\$120.13	\$118.24	\$119.33	0.67%

Note:

All data July 2014 and following will be broken out according to the new DFR region structure effective July 1 2014.



DIVISION OF FAMILY RESOURCES

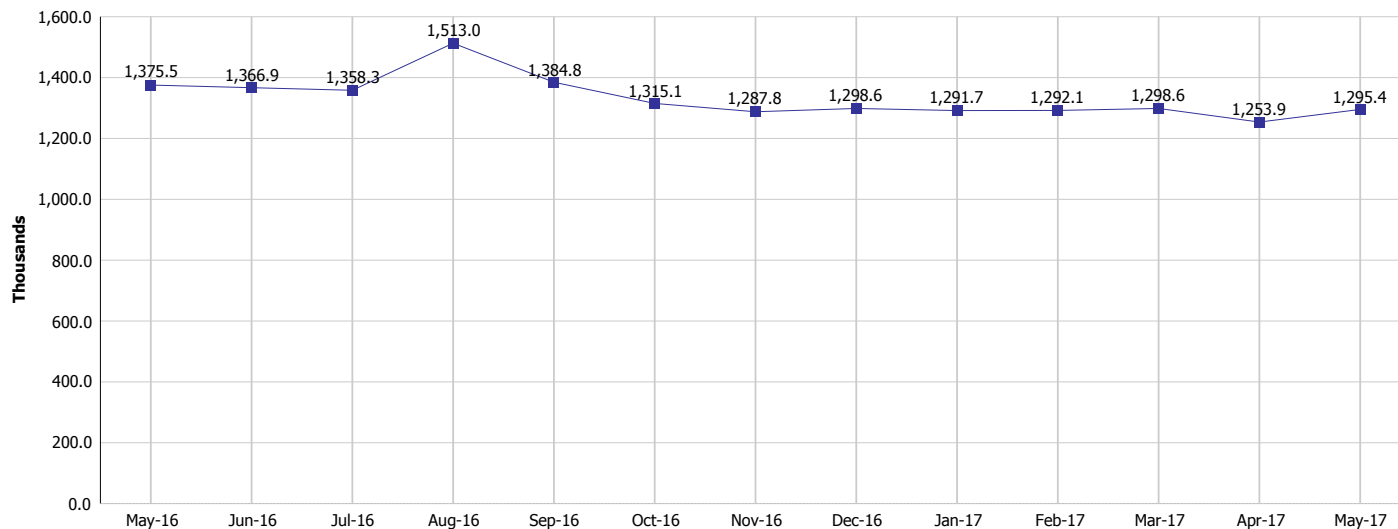
Monthly Management Report

Reporting Month: May 2017

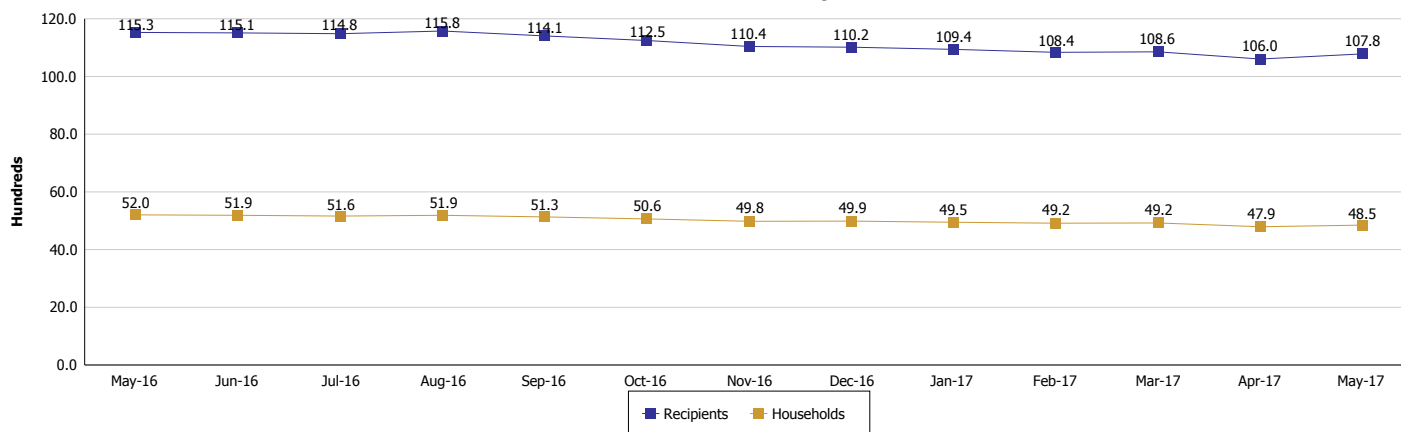
Location: Howard County

SUPPLEMENTAL NUTRITION ASSISTANCE PROGRAM (SNAP)

SNAP Issuance



SNAP Households and Recipients



Note:

All data July 2014 and following will be broken out according to the new DFR region structure effective July 1 2014.



DIVISION OF FAMILY RESOURCES

Monthly Management Report

Reporting Month: May 2017

Location: Howard County

HIP 2.0 and SNAP

	May 2017	April 2017	May 2016	Annual Change
Total HIP 2.0 Members	6,303	6,290	6,007	4.93%
HIP Members also SNAP Recipients	2,647	2,618	2,772	-4.51%
Percentage HIP Members SNAP Recipients	42.0%	41.6%	46.1%	1.70%
HIP Members SNAP ABAWDs	86	84	106	-18.87%
Percentage HIP Members SNAP ABAWDs	1.4%	1.3%	1.8%	1.70%

Note:

All data July 2014 and following will be broken out according to the new DFR region structure effective July 1 2014.



DIVISION OF FAMILY RESOURCES

Monthly Management Report

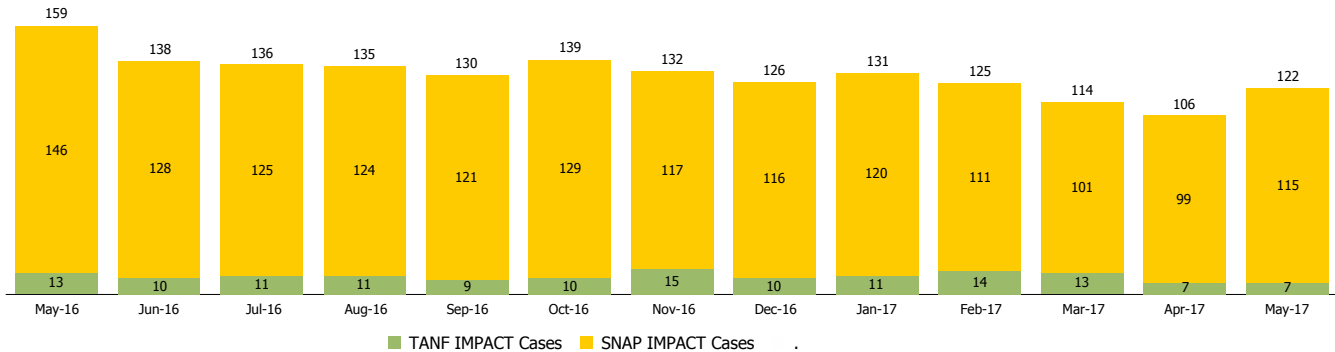
Reporting Month: May 2017

Location: Howard County

INDIANA MANPOWER PLACEMENT AND COMPREHENSIVE TRAINING (IMPACT)

	May 2017	April 2017	May 2016	Annual Change
Number of IMPACT cases	122	106	159	-23.27%
Number of TANF IMPACT adults	7	7	13	-46.15%
Number of SNAP IMPACT Cases	115	99	146	-21.23%
Total number of adults employed	35	40	19	84.21%
Number of TANF IMPACT adults newly employed (within past 30 days)	3	5	1	200.00%
Number of SNAP IMPACT adults employed	32	35	18	77.78%
Total number of adults ineligible due to employment	75	85	103	-27.18%
Number of TANF adults ineligible due to employment	1	0	0	
Number of SNAP adults ineligible due to employment	74	85	103	-28.16%

IMPACT Caseloads
(SNAP, TANF, Total Caseload)



Note:

All data July 2014 and following will be broken out according to the new DFR region structure effective July 1 2014.