



## DIVISION OF FAMILY RESOURCES

# Henry County Monthly Management Report April 2017

### State of Indiana

Eric Holcomb  
Governor

### Family and Social Services Administration

Jennifer Walthall, M.D.  
Secretary

### Division of Family Resources

Adrienne Shields  
Director

For questions regarding data on this report contact:  
[office.Communications@fssa.IN.gov](mailto:office.Communications@fssa.IN.gov)



## State of Indiana

Published May 2017



## DIVISION OF FAMILY RESOURCES

### Monthly Management Report

Reporting Month: April 2017

Location: Henry County

#### TEMPORARY ASSISTANCE FOR NEEDY FAMILIES (TANF)

Child-Only and One-Parent Families	Apr 30, 2017	March 2017	April 2016	Annual Change
Number of families receiving TANF Grants	67	72	71	-5.63%
Total number of grant recipients	112	126	121	-7.44%
Number of adult grant recipients	10	12	17	-41.18%
Number of child grant recipients	102	114	104	-1.92%
Total payments	\$11,656	\$12,906	\$11,867	-1.78%
Average payment per case	\$173.97	\$179.25	\$167.14	4.09%
Average payment per recipient	\$104.07	\$102.43	\$98.07	6.11%
Number of cases with benefits reduced to zero	0	0	2	-100.00%
Number of recipients with benefits reduced to zero	0	0	2	-100.00%
Number of adult recipients with benefit reduced to zero	0	0	0	0%
Number of child recipients with benefit reduced to zero	0	0	2	-100.00%

Two-Parent Families	Apr 30, 2017	March 2017	April 2016	Annual Change
Number of families receiving TANF Grants	3	5	3	0.00%
Total number of grant recipients	8	14	10	-20.00%
Number of adult grant recipients	3	5	5	-40.00%
Number of child grant recipients	5	9	5	0.00%
Total payments	\$625	\$870	\$834	-25.06%
Average payment per case	\$208.33	\$174.00	\$278.00	-25.06%
Average payment per recipient	\$78.12	\$62.14	\$83.40	-6.32%
Number of cases with benefits reduced to zero	0	0	0	0%
Number of recipients with benefits reduced to zero	0	0	0	0%
Number of adult recipients with benefit reduced to zero	0	0	0	0%
Number of child recipients with benefit reduced to zero	0	0	0	0%

**Note:**

All data July 2014 and following will be broken out according to the new DFR region structure effective July 1 2014.

Source:



## DIVISION OF FAMILY RESOURCES

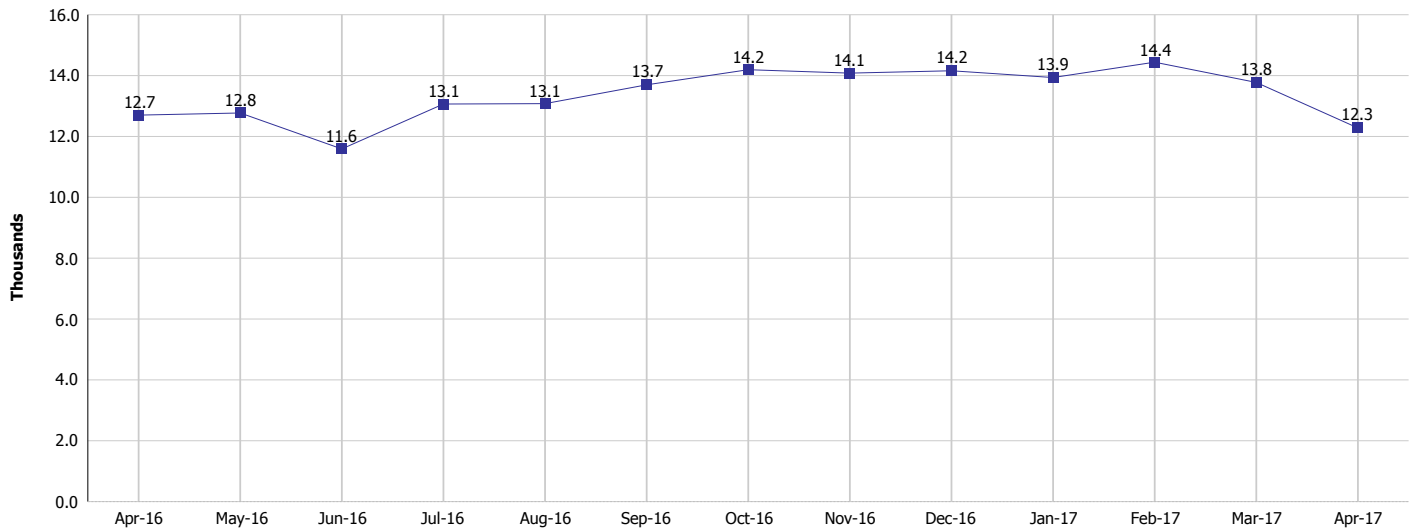
### Monthly Management Report

Reporting Month: April 2017

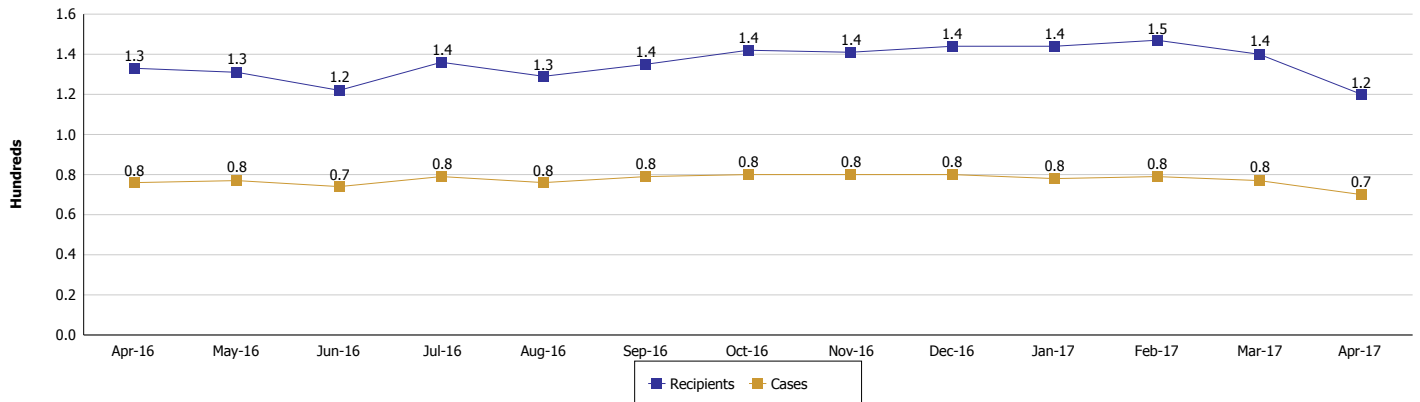
Location: Henry County

#### TEMPORARY ASSISTANCE FOR NEEDY FAMILIES (TANF)

#### TANF Regular And TANF Two-Parent Cash Assistance



#### TANF Cases and Recipients (TANF Regular and TANF Two-Parent)



#### Note:

All data July 2014 and following will be broken out according to the new DFR region structure effective July 1 2014.



## DIVISION OF FAMILY RESOURCES

### Monthly Management Report

Reporting Month: April 2017

Location: Henry County

#### SUPPLEMENTAL NUTRITION ASSISTANCE PROGRAM (SNAP)

	April 2017	March 2017	April 2016	Annual Change
Total issuance	\$611,462	\$633,251	\$719,745	-15.04%
Number of households receiving SNAP benefits	2,551	2,612	2,879	-11.39%
Number of recipients	5,294	5,470	6,149	-13.90%
Average issuance per household	\$239.7	\$242.44	\$250	-4.12%
Average issuance per recipient	\$115.5	\$115.77	\$117.05	-1.32%

**Note:**

All data July 2014 and following will be broken out according to the new DFR region structure effective July 1 2014.



# DIVISION OF FAMILY RESOURCES

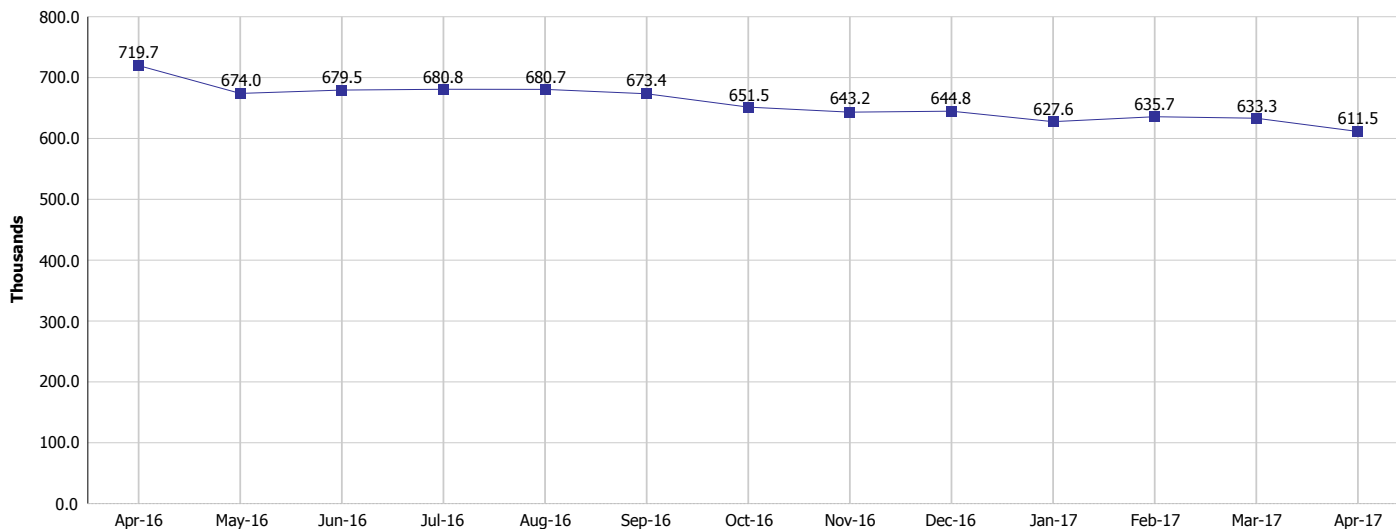
## Monthly Management Report

Reporting Month: April 2017

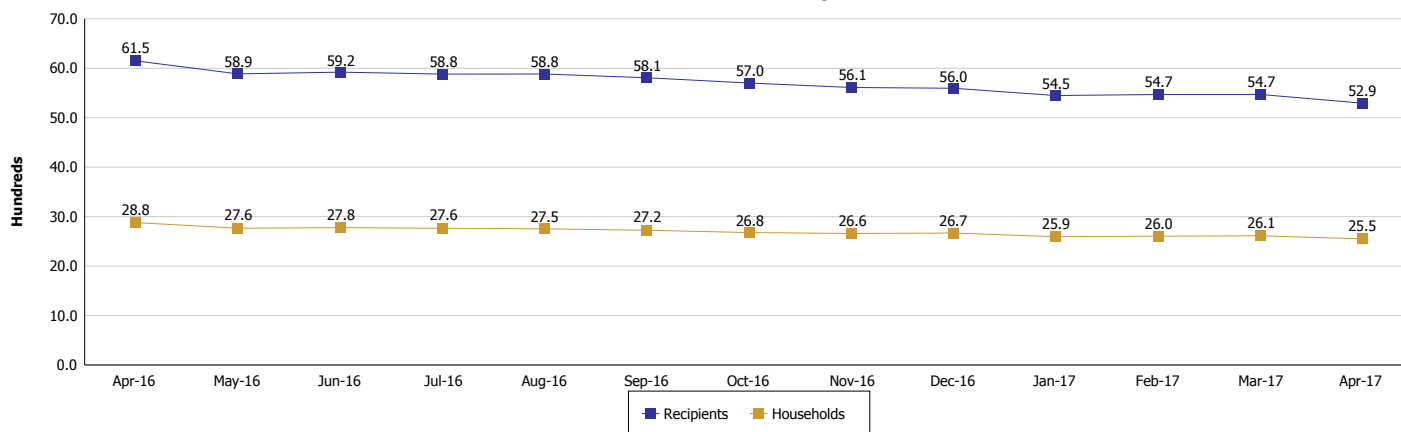
Location: Henry County

### SUPPLEMENTAL NUTRITION ASSISTANCE PROGRAM (SNAP)

#### SNAP Issuance



#### SNAP Households and Recipients



**Note:**

All data July 2014 and following will be broken out according to the new DFR region structure effective July 1 2014.



## DIVISION OF FAMILY RESOURCES

### Monthly Management Report

Reporting Month: April 2017

Location: Henry County

#### HIP 2.0 and SNAP

	April 2017	March 2017	April 2016	Annual Change
Total HIP 2.0 Members	3,666	3,724	3,512	4.38%
HIP Members also SNAP Recipients	1,364	1,416	1,524	-10.50%
Percentage HIP Members SNAP Recipients	37.2%	38.0%	43.4%	-0.33%
HIP Members SNAP ABAWDs	41	42	52	-21.15%
Percentage HIP Members SNAP ABAWDs	1.1%	1.1%	1.5%	-0.33%

**Note:**

All data July 2014 and following will be broken out according to the new DFR region structure effective July 1 2014.



## DIVISION OF FAMILY RESOURCES

### Monthly Management Report

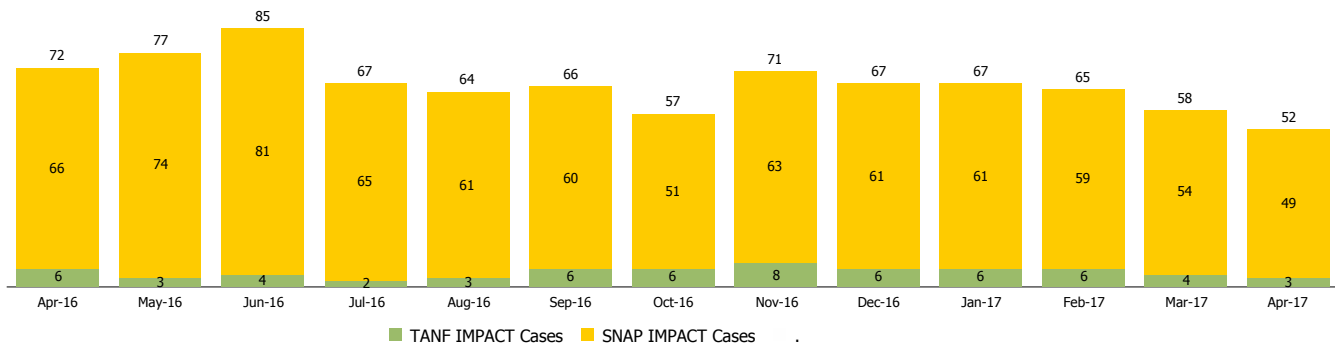
Reporting Month: April 2017

Location: Henry County

#### INDIANA MANPOWER PLACEMENT AND COMPREHENSIVE TRAINING (IMPACT)

	April 2017	March 2017	April 2016	Annual Change
Number of IMPACT cases	52	58	72	-27.78%
Number of TANF IMPACT adults	3	4	6	-50.00%
Number of SNAP IMPACT Cases	49	54	66	-25.76%
Total number of adults employed	17	9	7	142.86%
Number of TANF IMPACT adults newly employed (within past 30 days)	1	0	3	-66.67%
Number of SNAP IMPACT adults employed	16	9	4	300.00%
Total number of adults ineligible due to employment	56	54	58	-3.45%
Number of TANF adults ineligible due to employment	0	0	0	
Number of SNAP adults ineligible due to employment	56	54	58	-3.45%

**IMPACT Caseloads**  
(SNAP, TANF, Total Caseload)



**Note:**

All data July 2014 and following will be broken out according to the new DFR region structure effective July 1 2014.