



## DIVISION OF FAMILY RESOURCES

# Harrison County Monthly Management Report March 2018

### State of Indiana

Eric Holcomb  
Governor

### Family and Social Services Administration

Jennifer Walthall, M.D.  
Secretary

### Division of Family Resources

Adrienne Shields  
Director

For questions regarding data on this report contact:  
[office.Communications@fssa.IN.gov](mailto:office.Communications@fssa.IN.gov)



## State of Indiana

Published April 2018



## DIVISION OF FAMILY RESOURCES

### Monthly Management Report

Reporting Month: March 2018

Location: Harrison County

#### TEMPORARY ASSISTANCE FOR NEEDY FAMILIES (TANF)

Child-Only and One-Parent Families	Mar 31, 2018	February 2018	March 2017	Annual Change
Number of families receiving TANF Grants	38	37	40	-5.00%
Total number of grant recipients	61	59	67	-8.96%
Number of adult grant recipients	4	3	5	-20.00%
Number of child grant recipients	57	56	62	-8.06%
Total payments	\$6,445	\$6,108	\$6,904	-6.65%
Average payment per case	\$169.61	\$165.08	\$172.60	-1.74%
Average payment per recipient	\$105.66	\$103.53	\$103.04	2.53%
Number of cases with benefits reduced to zero	0	0	1	-100.00%
Number of recipients with benefits reduced to zero	0	0	1	-100.00%
Number of adult recipients with benefit reduced to zero	0	0	0	0%
Number of child recipients with benefit reduced to zero	0	0	1	-100.00%

Two-Parent Families	Mar 31, 2018	February 2018	March 2017	Annual Change
Number of families receiving TANF Grants	0	0	0	0%
Total number of grant recipients	0	0	0	0%
Number of adult grant recipients	0	0	0	0%
Number of child grant recipients	0	0	0	0%
Total payments	\$0	\$0	\$0	0%
Average payment per case	\$0.00	\$0.00	\$0.00	0.00%
Average payment per recipient	\$0.00	\$0.00	\$0.00	0.00%
Number of cases with benefits reduced to zero	0	0	0	0%
Number of recipients with benefits reduced to zero	0	0	0	0%
Number of adult recipients with benefit reduced to zero	0	0	0	0%
Number of child recipients with benefit reduced to zero	0	0	0	0%

**Note:**

All data July 2014 and following will be broken out according to the new DFR region structure effective July 1 2014.

Source:



## DIVISION OF FAMILY RESOURCES

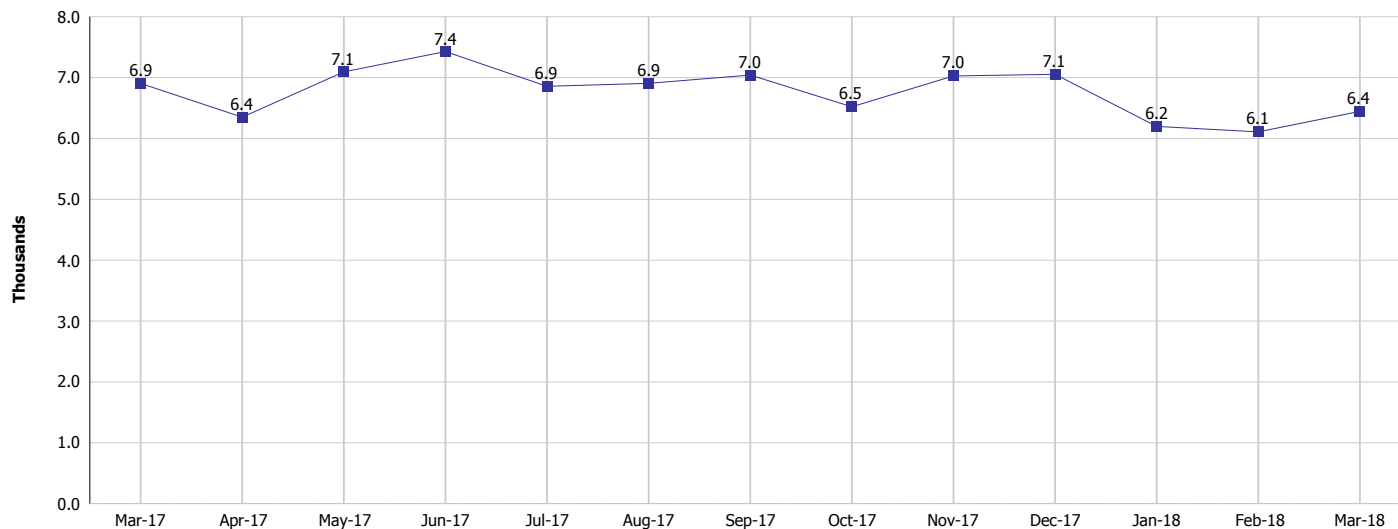
### Monthly Management Report

Reporting Month: March 2018

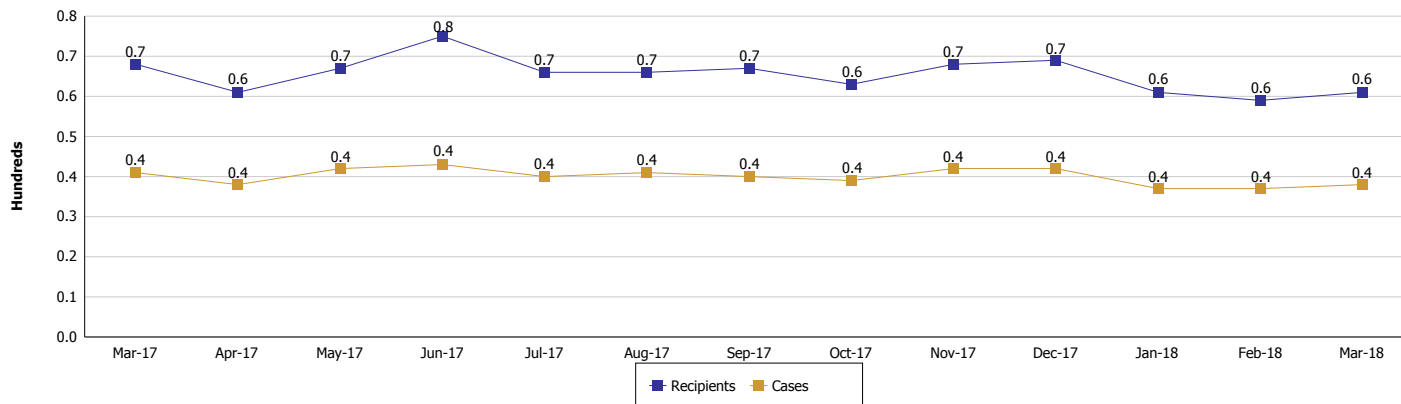
Location: Harrison County

#### TEMPORARY ASSISTANCE FOR NEEDY FAMILIES (TANF)

#### TANF Regular And TANF Two-Parent Cash Assistance



#### TANF Cases and Recipients (TANF Regular and TANF Two-Parent)



**Note:**

All data July 2014 and following will be broken out according to the new DFR region structure effective July 1 2014.



## DIVISION OF FAMILY RESOURCES

### Monthly Management Report

Reporting Month: March 2018

Location: Harrison County

#### SUPPLEMENTAL NUTRITION ASSISTANCE PROGRAM (SNAP)

	March 2018	February 2018	March 2017	Annual Change
Total issuance	\$288,813	\$287,760	\$333,907	-13.50%
Number of households receiving SNAP benefits	1,169	1,170	1,285	-9.03%
Number of recipients	2,622	2,593	2,933	-10.60%
Average issuance per household	\$247.06	\$245.95	\$259.85	-4.92%
Average issuance per recipient	\$110.15	\$110.98	\$113.84	-3.24%

**Note:**

All data July 2014 and following will be broken out according to the new DFR region structure effective July 1 2014.



## DIVISION OF FAMILY RESOURCES

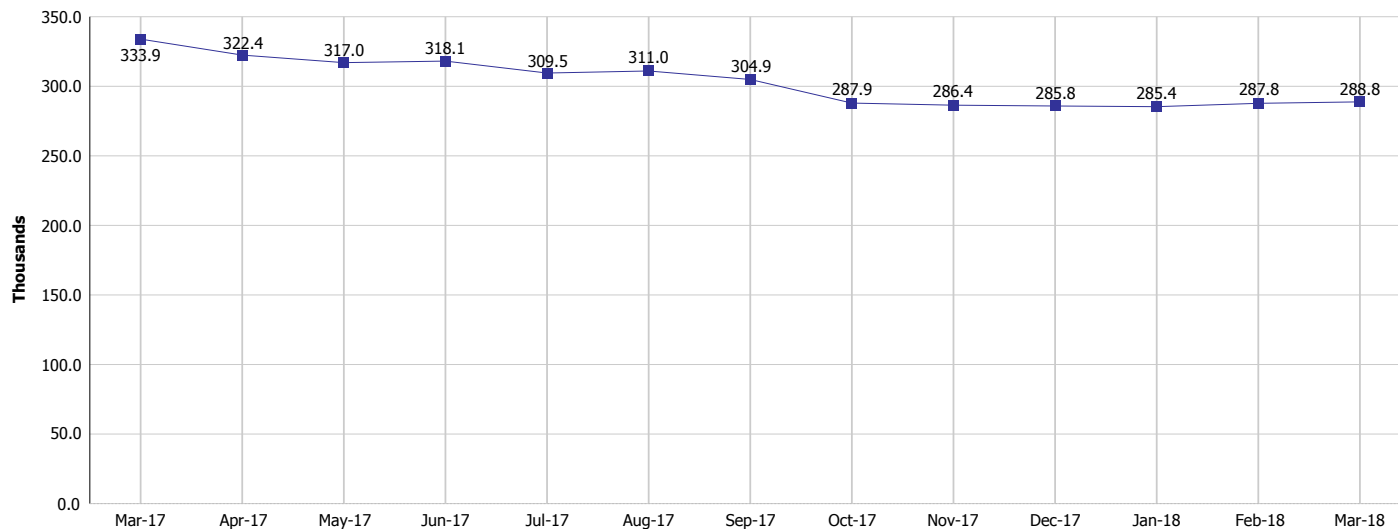
### Monthly Management Report

Reporting Month: March 2018

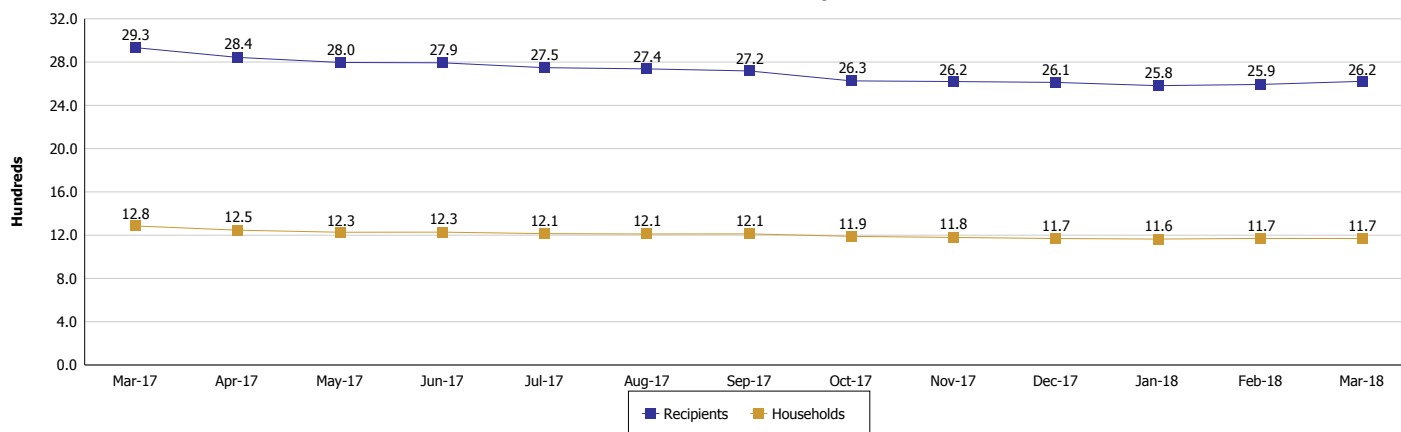
Location: Harrison County

#### SUPPLEMENTAL NUTRITION ASSISTANCE PROGRAM (SNAP)

#### SNAP Issuance



#### SNAP Households and Recipients



**Note:**

All data July 2014 and following will be broken out according to the new DFR region structure effective July 1 2014.



## DIVISION OF FAMILY RESOURCES

### Monthly Management Report

Reporting Month: March 2018

Location: Harrison County

#### HIP 2.0 and SNAP

	March 2018	February 2018	March 2017	Annual Change
Total HIP 2.0 Members	2,142	2,144	2,031	5.47%
HIP Members also SNAP Recipients	663	685	696	-4.74%
Percentage HIP Members SNAP Recipients	31.0%	31.9%	34.3%	2.73%
HIP Members SNAP ABAWDs	17	20	20	-15.00%
Percentage HIP Members SNAP ABAWDs	0.8%	0.9%	1.0%	2.73%

**Note:**

All data July 2014 and following will be broken out according to the new DFR region structure effective July 1 2014.



**DIVISION OF FAMILY RESOURCES**

**Monthly Management Report**

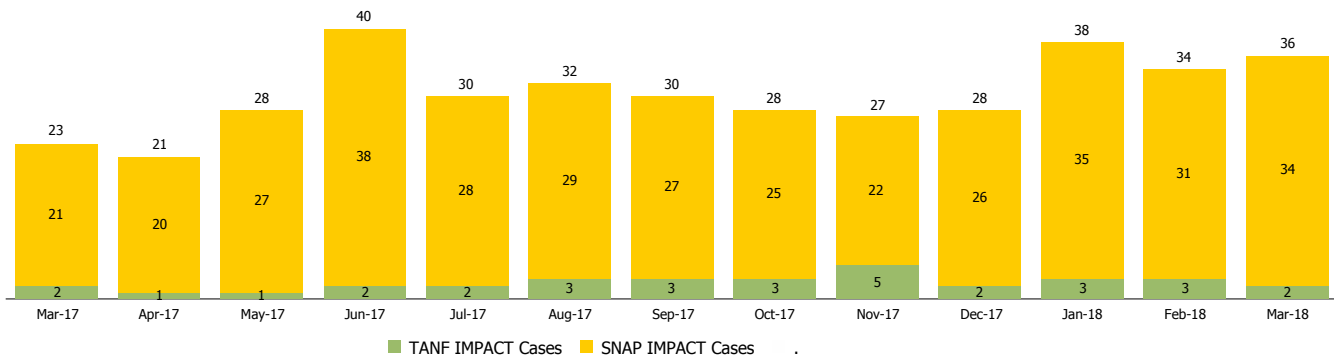
Reporting Month: March 2018

Location: Harrison County

**INDIANA MANPOWER PLACEMENT AND COMPREHENSIVE TRAINING (IMPACT)**

	March 2018	February 2018	March 2017	Annual Change
Number of IMPACT cases	36	34	23	56.52%
Number of TANF IMPACT adults	2	3	2	0.00%
Number of SNAP IMPACT Cases	34	31	21	61.90%
Total number of adults employed	6	3	4	50.00%
Number of TANF IMPACT adults newly employed (within past 30 days)	0	0	0	
Number of SNAP IMPACT adults employed	6	3	4	50.00%
Total number of adults ineligible due to employment	15	11	14	7.14%
Number of TANF adults ineligible due to employment	0	0	0	
Number of SNAP adults ineligible due to employment	15	11	14	7.14%

**IMPACT Caseloads**  
(SNAP, TANF, Total Caseload)



**Note:**

All data July 2014 and following will be broken out according to the new DFR region structure effective July 1 2014.