



## DIVISION OF FAMILY RESOURCES

# Hancock County Monthly Management Report October 2017

### State of Indiana

Eric Holcomb  
Governor

### Family and Social Services Administration

Jennifer Walthall, M.D.  
Secretary

### Division of Family Resources

Adrienne Shields  
Director

For questions regarding data on this report contact:  
[office.Communications@fssa.IN.gov](mailto:office.Communications@fssa.IN.gov)



## State of Indiana

Published November 2017



## DIVISION OF FAMILY RESOURCES

### Monthly Management Report

Reporting Month: October 2017

Location: Hancock County

#### TEMPORARY ASSISTANCE FOR NEEDY FAMILIES (TANF)

Child-Only and One-Parent Families	Oct 31, 2017	September 2017	October 2016	Annual Change
Number of families receiving TANF Grants	28	29	31	-9.68%
Total number of grant recipients	55	57	61	-9.84%
Number of adult grant recipients	4	5	8	-50.00%
Number of child grant recipients	51	52	53	-3.77%
Total payments	\$5,275	\$5,365	\$6,032	-12.55%
Average payment per case	\$188.39	\$185.00	\$194.58	-3.18%
Average payment per recipient	\$95.91	\$94.12	\$98.89	-3.01%
Number of cases with benefits reduced to zero	0	0	0	0%
Number of recipients with benefits reduced to zero	0	0	0	0%
Number of adult recipients with benefit reduced to zero	0	0	0	0%
Number of child recipients with benefit reduced to zero	0	0	0	0%

Two-Parent Families	Oct 31, 2017	September 2017	October 2016	Annual Change
Number of families receiving TANF Grants	0	0	0	0%
Total number of grant recipients	0	0	0	0%
Number of adult grant recipients	0	0	0	0%
Number of child grant recipients	0	0	0	0%
Total payments	\$0	\$0	\$0	0%
Average payment per case	\$0.00	\$0.00	\$0.00	0.00%
Average payment per recipient	\$0.00	\$0.00	\$0.00	0.00%
Number of cases with benefits reduced to zero	0	0	0	0%
Number of recipients with benefits reduced to zero	0	0	0	0%
Number of adult recipients with benefit reduced to zero	0	0	0	0%
Number of child recipients with benefit reduced to zero	0	0	0	0%

**Note:**

All data July 2014 and following will be broken out according to the new DFR region structure effective July 1 2014.

Source:



## DIVISION OF FAMILY RESOURCES

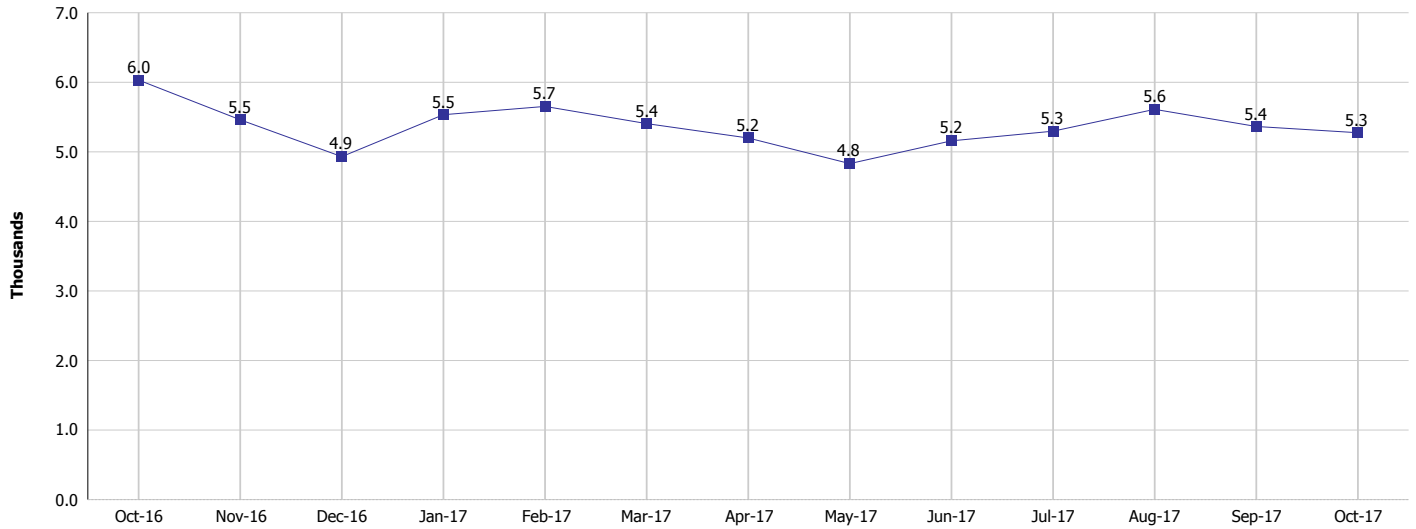
### Monthly Management Report

Reporting Month: October 2017

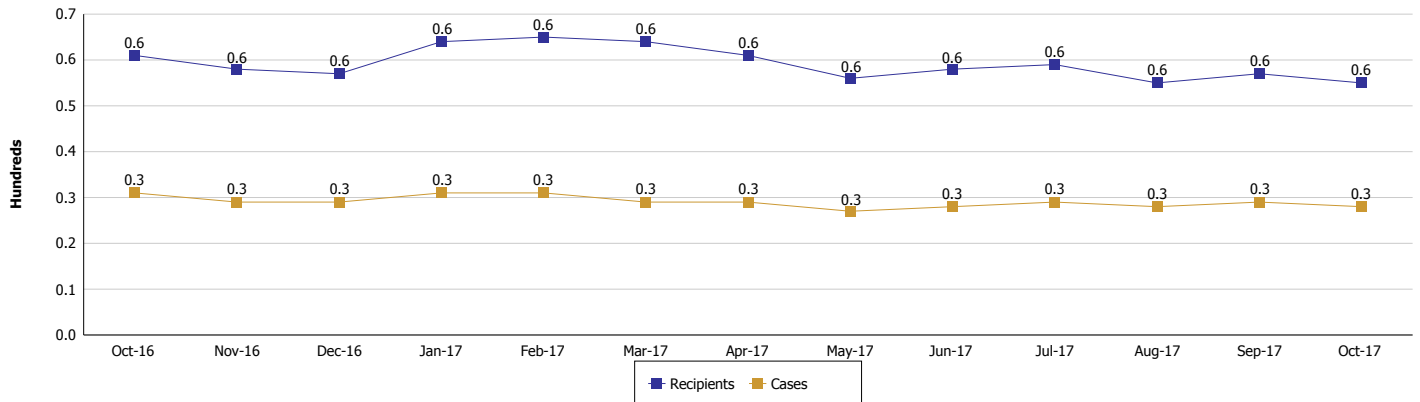
Location: Hancock County

#### TEMPORARY ASSISTANCE FOR NEEDY FAMILIES (TANF)

TANF Regular And TANF Two-Parent Cash Assistance



TANF Cases and Recipients  
(TANF Regular and TANF Two-Parent)



**Note:**

All data July 2014 and following will be broken out according to the new DFR region structure effective July 1 2014.



## DIVISION OF FAMILY RESOURCES

### Monthly Management Report

Reporting Month: October 2017

Location: Hancock County

#### SUPPLEMENTAL NUTRITION ASSISTANCE PROGRAM (SNAP)

	October 2017	September 2017	October 2016	Annual Change
Total issuance	\$400,319	\$411,636	\$466,454	-14.18%
Number of households receiving SNAP benefits	1,583	1,602	1,736	-8.81%
Number of recipients	3,477	3,512	3,923	-11.37%
Average issuance per household	\$252.89	\$256.95	\$268.69	-5.88%
Average issuance per recipient	\$115.13	\$117.21	\$118.9	-3.17%

**Note:**

All data July 2014 and following will be broken out according to the new DFR region structure effective July 1 2014.



# DIVISION OF FAMILY RESOURCES

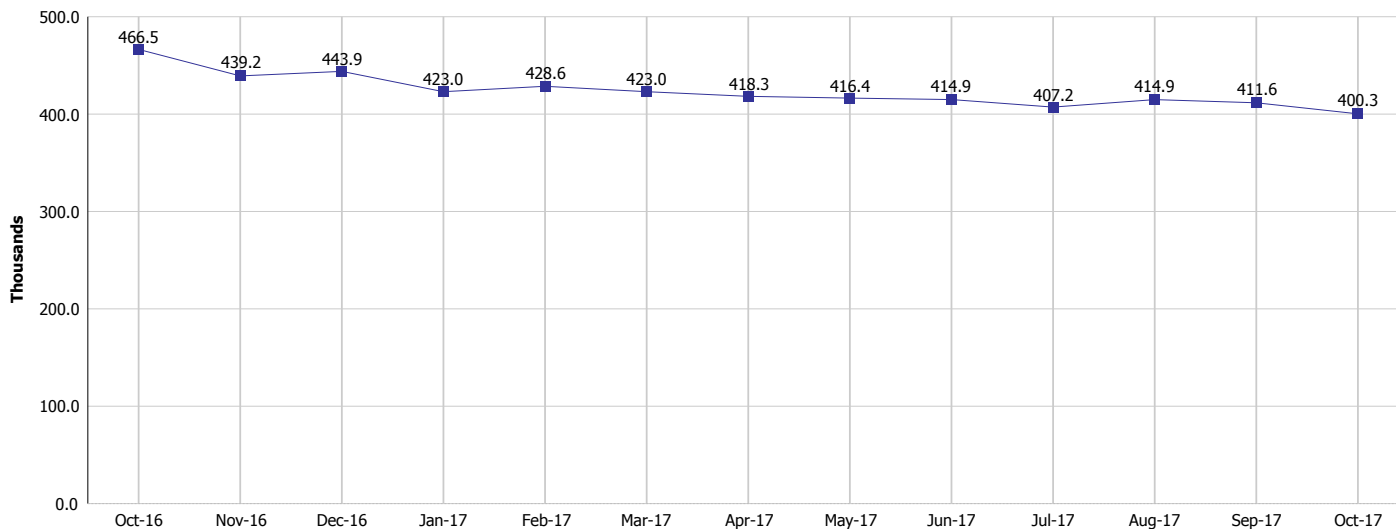
## Monthly Management Report

Reporting Month: October 2017

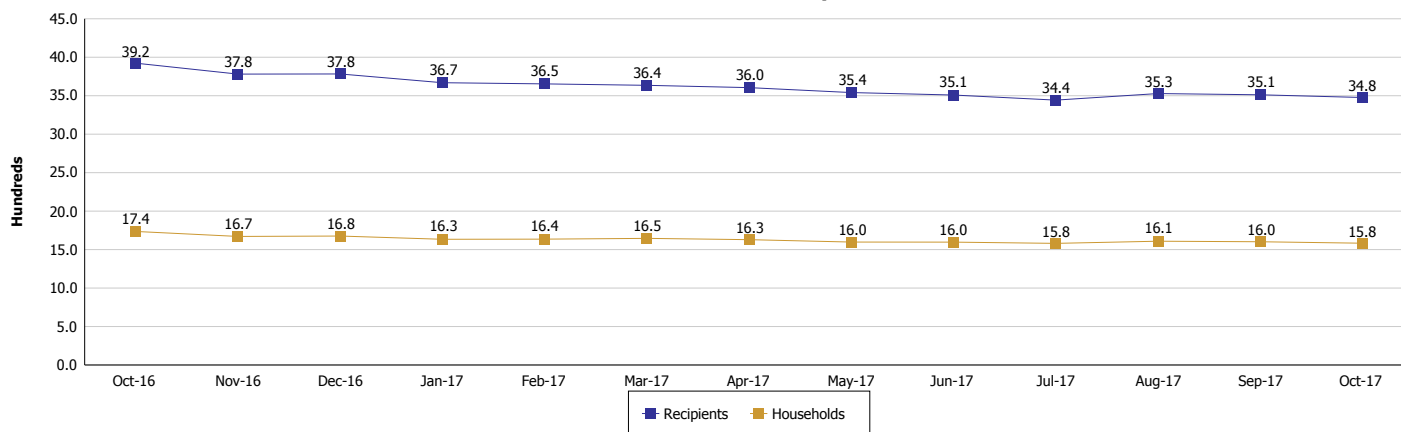
Location: Hancock County

### SUPPLEMENTAL NUTRITION ASSISTANCE PROGRAM (SNAP)

#### SNAP Issuance



#### SNAP Households and Recipients



#### Note:

All data July 2014 and following will be broken out according to the new DFR region structure effective July 1 2014.



## DIVISION OF FAMILY RESOURCES

### Monthly Management Report

Reporting Month: October 2017

Location: Hancock County

#### HIP 2.0 and SNAP

	October 2017	September 2017	October 2016	Annual Change
Total HIP 2.0 Members	3,054	3,036	2,934	4.09%
HIP Members also SNAP Recipients	855	867	992	-13.81%
Percentage HIP Members SNAP Recipients	28.0%	28.6%	33.8%	-0.68%
HIP Members SNAP ABAWDs	11	11	21	-47.62%
Percentage HIP Members SNAP ABAWDs	0.4%	0.4%	0.7%	-0.68%

**Note:**

All data July 2014 and following will be broken out according to the new DFR region structure effective July 1 2014.



**DIVISION OF FAMILY RESOURCES**

**Monthly Management Report**

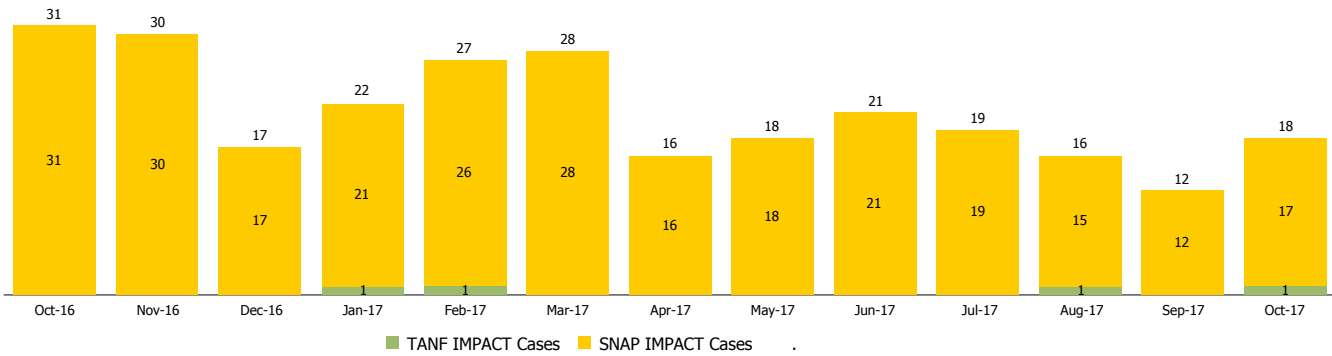
Reporting Month: October 2017

Location: Hancock County

**INDIANA MANPOWER PLACEMENT AND COMPREHENSIVE TRAINING (IMPACT)**

	October 2017	September 2017	October 2016	Annual Change
Number of IMPACT cases	18	12	31	-41.94%
Number of TANF IMPACT adults	1	0	0	
Number of SNAP IMPACT Cases	17	12	31	-45.16%
Total number of adults employed	14	6	5	180.00%
Number of TANF IMPACT adults newly employed (within past 30 days)	2	1	0	
Number of SNAP IMPACT adults employed	12	5	5	140.00%
Total number of adults ineligible due to employment	43	42	34	26.47%
Number of TANF adults ineligible due to employment	0	0	0	
Number of SNAP adults ineligible due to employment	43	42	34	26.47%

**IMPACT Caseloads**  
(SNAP, TANF, Total Caseload)



**Note:**

All data July 2014 and following will be broken out according to the new DFR region structure effective July 1 2014.