



## DIVISION OF FAMILY RESOURCES

# Hamilton County Monthly Management Report August 2017

### State of Indiana

Eric Holcomb  
Governor

### Family and Social Services Administration

Jennifer Walthall, M.D.  
Secretary

### Division of Family Resources

Adrienne Shields  
Director

For questions regarding data on this report contact:  
[office.Communications@fssa.IN.gov](mailto:office.Communications@fssa.IN.gov)



## State of Indiana

Published September 2017



## DIVISION OF FAMILY RESOURCES

### Monthly Management Report

Reporting Month: August 2017

Location: Hamilton County

#### TEMPORARY ASSISTANCE FOR NEEDY FAMILIES (TANF)

Child-Only and One-Parent Families	Aug 31, 2017	July 2017	August 2016	Annual Change
Number of families receiving TANF Grants	51	46	65	-21.54%
Total number of grant recipients	104	91	133	-21.80%
Number of adult grant recipients	22	18	28	-21.43%
Number of child grant recipients	82	73	105	-21.90%
Total payments	\$10,903	\$9,690	\$12,936	-15.72%
Average payment per case	\$213.78	\$210.65	\$199.02	7.42%
Average payment per recipient	\$104.84	\$106.48	\$97.26	7.79%
Number of cases with benefits reduced to zero	2	2	0	0%
Number of recipients with benefits reduced to zero	4	3	0	0%
Number of adult recipients with benefit reduced to zero	1	1	0	0%
Number of child recipients with benefit reduced to zero	3	2	0	0%

Two-Parent Families	Aug 31, 2017	July 2017	August 2016	Annual Change
Number of families receiving TANF Grants	0	0	1	-100.00%
Total number of grant recipients	0	0	3	-100.00%
Number of adult grant recipients	0	0	0	0%
Number of child grant recipients	0	0	3	-100.00%
Total payments	\$0	\$0	\$231	-100.00%
Average payment per case	\$0.00	\$0.00	\$231.00	-100.00%
Average payment per recipient	\$0.00	\$0.00	\$77.00	-100.00%
Number of cases with benefits reduced to zero	0	0	0	0%
Number of recipients with benefits reduced to zero	0	0	0	0%
Number of adult recipients with benefit reduced to zero	0	0	0	0%
Number of child recipients with benefit reduced to zero	0	0	0	0%

**Note:**

All data July 2014 and following will be broken out according to the new DFR region structure effective July 1 2014.

Source:



## DIVISION OF FAMILY RESOURCES

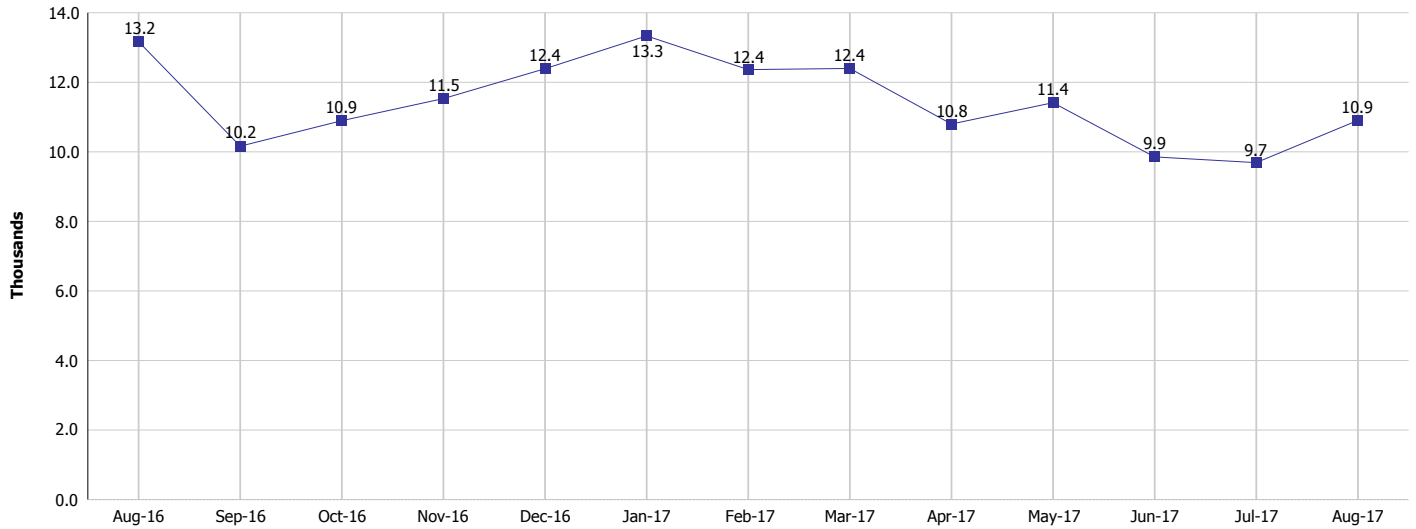
### Monthly Management Report

Reporting Month: August 2017

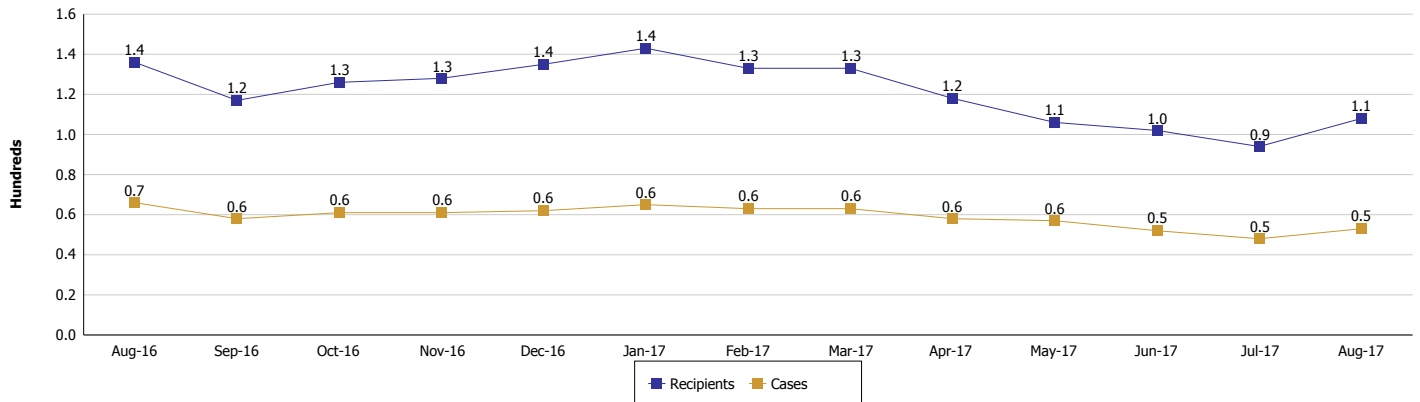
Location: Hamilton County

#### TEMPORARY ASSISTANCE FOR NEEDY FAMILIES (TANF)

#### TANF Regular And TANF Two-Parent Cash Assistance



#### TANF Cases and Recipients (TANF Regular and TANF Two-Parent)



**Note:**

All data July 2014 and following will be broken out according to the new DFR region structure effective July 1 2014.



## DIVISION OF FAMILY RESOURCES

### Monthly Management Report

Reporting Month: August 2017

Location: Hamilton County

#### SUPPLEMENTAL NUTRITION ASSISTANCE PROGRAM (SNAP)

	August 2017	July 2017	August 2016	Annual Change
Total issuance	\$914,576	\$892,006	\$965,725	-5.30%
Number of households receiving SNAP benefits	3,146	3,107	3,364	-6.48%
Number of recipients	7,449	7,396	8,059	-7.57%
Average issuance per household	\$290.71	\$287.1	\$287.08	1.26%
Average issuance per recipient	\$122.78	\$120.61	\$119.83	2.46%

**Note:**

All data July 2014 and following will be broken out according to the new DFR region structure effective July 1 2014.



# DIVISION OF FAMILY RESOURCES

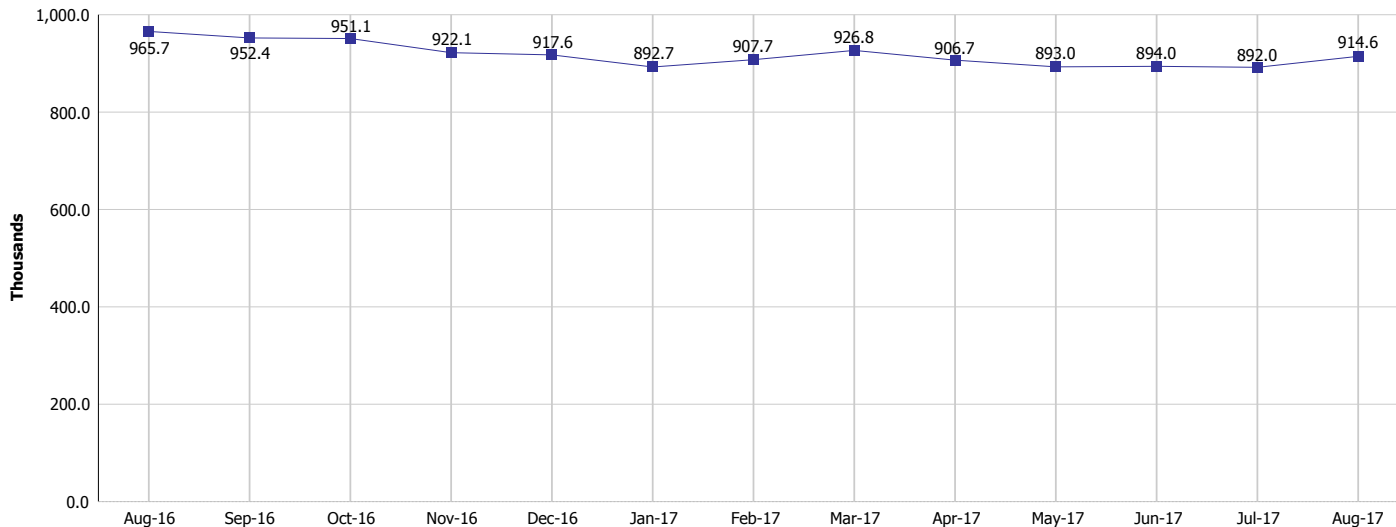
## Monthly Management Report

Reporting Month: August 2017

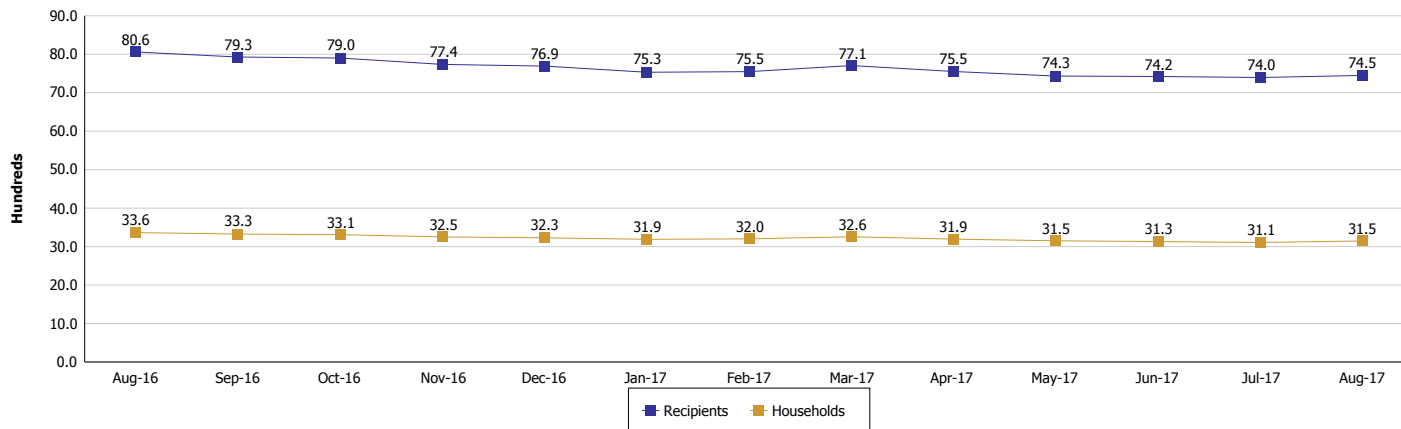
Location: Hamilton County

### SUPPLEMENTAL NUTRITION ASSISTANCE PROGRAM (SNAP)

#### SNAP Issuance



#### SNAP Households and Recipients



**Note:**

All data July 2014 and following will be broken out according to the new DFR region structure effective July 1 2014.



## DIVISION OF FAMILY RESOURCES

### Monthly Management Report

Reporting Month: August 2017

Location: Hamilton County

#### HIP 2.0 and SNAP

	August 2017	July 2017	August 2016	Annual Change
Total HIP 2.0 Members	8,082	8,032	7,160	12.88%
HIP Members also SNAP Recipients	1,816	1,800	1,882	-3.51%
Percentage HIP Members SNAP Recipients	22.5%	22.4%	26.3%	9.52%
HIP Members SNAP ABAWDs	43	32	35	22.86%
Percentage HIP Members SNAP ABAWDs	0.5%	0.4%	0.5%	9.52%

**Note:**

All data July 2014 and following will be broken out according to the new DFR region structure effective July 1 2014.



## DIVISION OF FAMILY RESOURCES

### Monthly Management Report

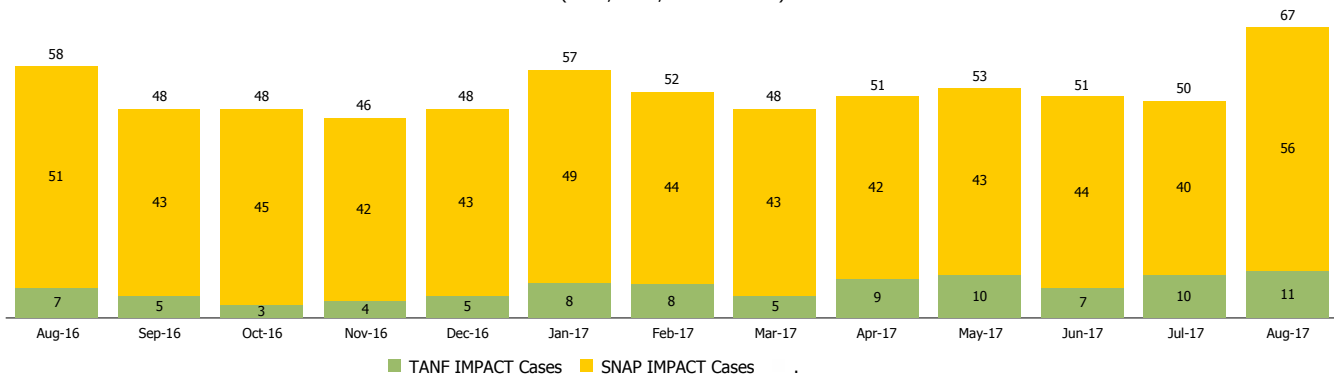
Reporting Month: August 2017

Location: Hamilton County

#### INDIANA MANPOWER PLACEMENT AND COMPREHENSIVE TRAINING (IMPACT)

	August 2017	July 2017	August 2016	Annual Change
Number of IMPACT cases	67	50	58	15.52%
Number of TANF IMPACT adults	11	10	7	57.14%
Number of SNAP IMPACT Cases	56	40	51	9.80%
Total number of adults employed	15	9	13	15.38%
Number of TANF IMPACT adults newly employed (within past 30 days)	1	3	2	-50.00%
Number of SNAP IMPACT adults employed	14	6	11	27.27%
Total number of adults ineligible due to employment	67	74	69	-2.90%
Number of TANF adults ineligible due to employment	0	0	0	
Number of SNAP adults ineligible due to employment	67	74	69	-2.90%

**IMPACT Caseloads**  
(SNAP, TANF, Total Caseload)



**Note:**

All data July 2014 and following will be broken out according to the new DFR region structure effective July 1 2014.