



## DIVISION OF FAMILY RESOURCES

# Greene County Monthly Management Report July 2017

### State of Indiana

Eric Holcomb  
Governor

### Family and Social Services Administration

Jennifer Walthall, M.D.  
Secretary

### Division of Family Resources

Adrienne Shields  
Director

For questions regarding data on this report contact:  
[office.Communications@fssa.IN.gov](mailto:office.Communications@fssa.IN.gov)



## State of Indiana

Published August 2017



## DIVISION OF FAMILY RESOURCES

### Monthly Management Report

Reporting Month: July 2017

Location: Greene County

#### TEMPORARY ASSISTANCE FOR NEEDY FAMILIES (TANF)

Child-Only and One-Parent Families	Jul 31, 2017	June 2017	July 2016	Annual Change
Number of families receiving TANF Grants	18	19	24	-25.00%
Total number of grant recipients	31	34	36	-13.89%
Number of adult grant recipients	5	6	2	150.00%
Number of child grant recipients	26	28	34	-23.53%
Total payments	\$3,230	\$3,189	\$3,933	-17.87%
Average payment per case	\$179.44	\$167.84	\$163.88	9.50%
Average payment per recipient	\$104.19	\$93.79	\$109.25	-4.63%
Number of cases with benefits reduced to zero	0	0	1	-100.00%
Number of recipients with benefits reduced to zero	0	0	1	-100.00%
Number of adult recipients with benefit reduced to zero	0	0	1	-100.00%
Number of child recipients with benefit reduced to zero	0	0	0	0%

Two-Parent Families	Jul 31, 2017	June 2017	July 2016	Annual Change
Number of families receiving TANF Grants	0	0	0	0%
Total number of grant recipients	0	0	0	0%
Number of adult grant recipients	0	0	0	0%
Number of child grant recipients	0	0	0	0%
Total payments	\$0	\$0	\$0	0%
Average payment per case	\$0.00	\$0.00	\$0.00	0.00%
Average payment per recipient	\$0.00	\$0.00	\$0.00	0.00%
Number of cases with benefits reduced to zero	0	0	0	0%
Number of recipients with benefits reduced to zero	0	0	0	0%
Number of adult recipients with benefit reduced to zero	0	0	0	0%
Number of child recipients with benefit reduced to zero	0	0	0	0%

**Note:**

All data July 2014 and following will be broken out according to the new DFR region structure effective July 1 2014.

Source:



## DIVISION OF FAMILY RESOURCES

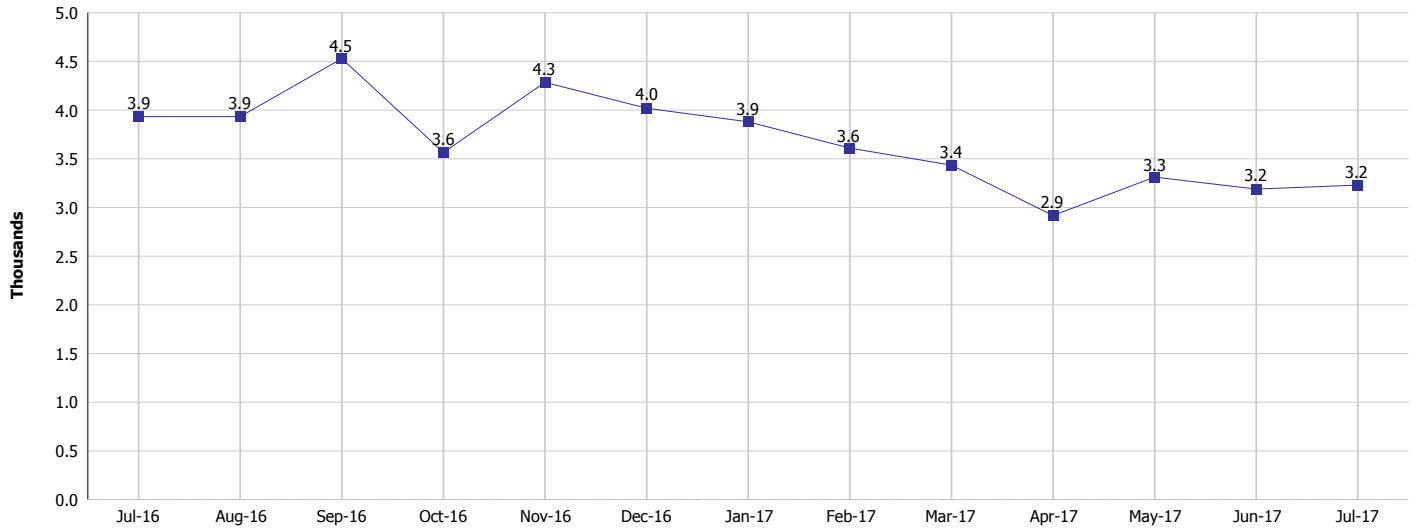
### Monthly Management Report

Reporting Month: July 2017

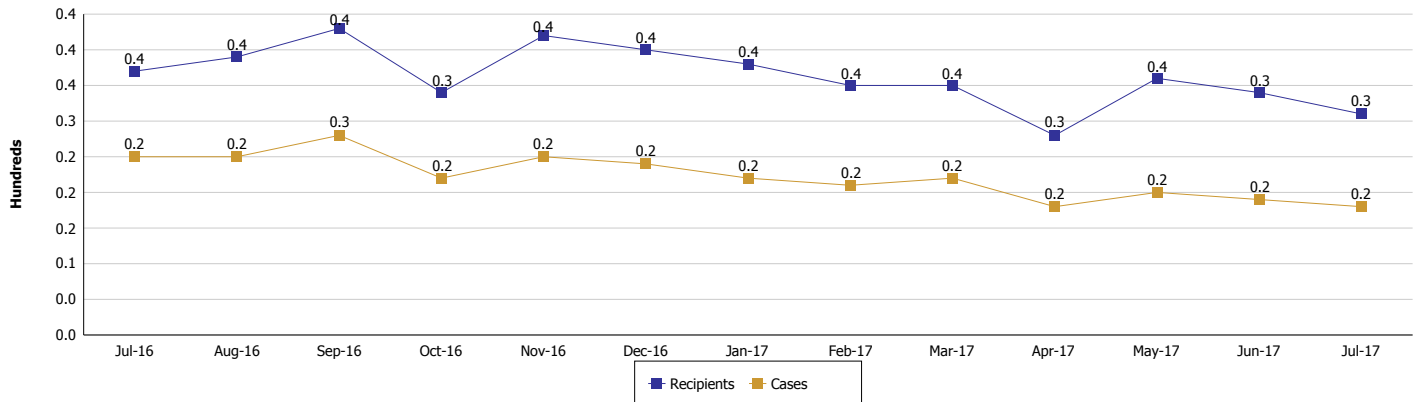
Location: Greene County

#### TEMPORARY ASSISTANCE FOR NEEDY FAMILIES (TANF)

#### TANF Regular And TANF Two-Parent Cash Assistance



#### TANF Cases and Recipients (TANF Regular and TANF Two-Parent)



**Note:**

All data July 2014 and following will be broken out according to the new DFR region structure effective July 1 2014.



## DIVISION OF FAMILY RESOURCES

### Monthly Management Report

Reporting Month: July 2017

Location: Greene County

#### SUPPLEMENTAL NUTRITION ASSISTANCE PROGRAM (SNAP)

	July 2017	June 2017	July 2016	Annual Change
Total issuance	\$362,549	\$365,938	\$393,877	-7.95%
Number of households receiving SNAP benefits	1,497	1,515	1,620	-7.59%
Number of recipients	3,300	3,315	3,605	-8.46%
Average issuance per household	\$242.18	\$241.54	\$243.13	-0.39%
Average issuance per recipient	\$109.86	\$110.39	\$109.26	0.55%

**Note:**

All data July 2014 and following will be broken out according to the new DFR region structure effective July 1 2014.



# DIVISION OF FAMILY RESOURCES

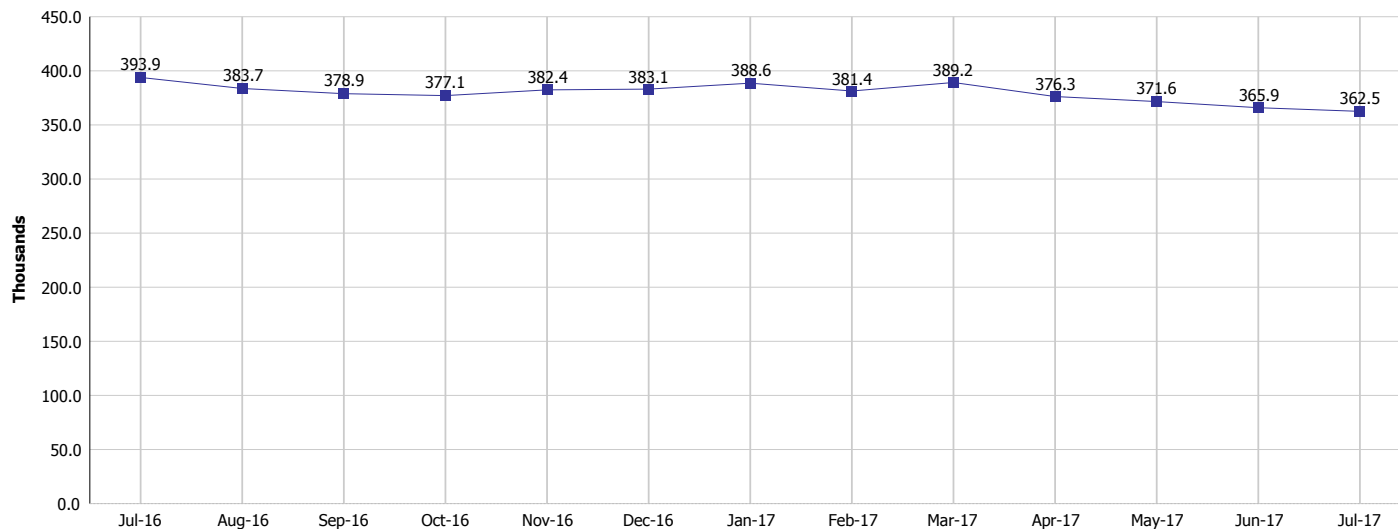
## Monthly Management Report

Reporting Month: July 2017

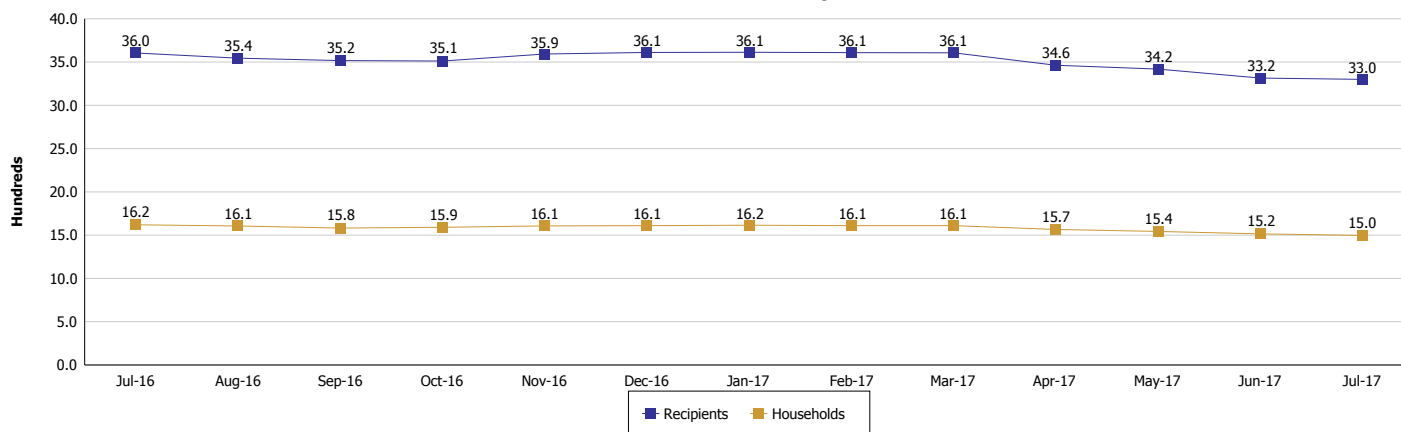
Location: Greene County

### SUPPLEMENTAL NUTRITION ASSISTANCE PROGRAM (SNAP)

#### SNAP Issuance



#### SNAP Households and Recipients



**Note:**

All data July 2014 and following will be broken out according to the new DFR region structure effective July 1 2014.



## DIVISION OF FAMILY RESOURCES

### Monthly Management Report

Reporting Month: July 2017

Location: Greene County

#### HIP 2.0 and SNAP

	July 2017	June 2017	July 2016	Annual Change
Total HIP 2.0 Members	2,420	2,412	2,276	6.33%
HIP Members also SNAP Recipients	894	909	935	-4.39%
Percentage HIP Members SNAP Recipients	36.9%	37.7%	41.1%	2.46%
HIP Members SNAP ABAWDs	16	26	39	-58.97%
Percentage HIP Members SNAP ABAWDs	0.7%	1.1%	1.7%	2.46%

**Note:**

All data July 2014 and following will be broken out according to the new DFR region structure effective July 1 2014.



## DIVISION OF FAMILY RESOURCES

### Monthly Management Report

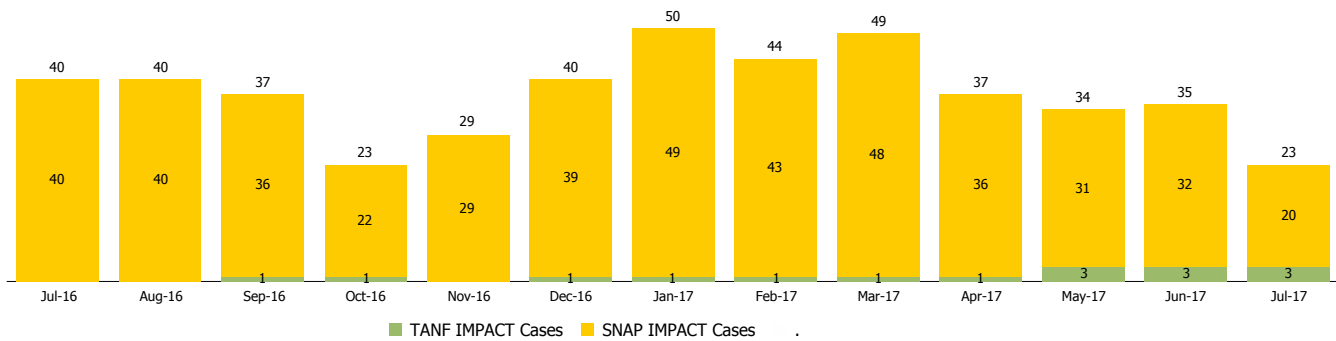
Reporting Month: July 2017

Location: Greene County

#### INDIANA MANPOWER PLACEMENT AND COMPREHENSIVE TRAINING (IMPACT)

	July 2017	June 2017	July 2016	Annual Change
Number of IMPACT cases	23	35	40	-42.50%
Number of TANF IMPACT adults	3	3	0	
Number of SNAP IMPACT Cases	20	32	40	-50.00%
Total number of adults employed	4	0	10	-60.00%
Number of TANF IMPACT adults newly employed (within past 30 days)	0	0	0	
Number of SNAP IMPACT adults employed	4	0	10	-60.00%
Total number of adults ineligible due to employment	25	27	24	4.17%
Number of TANF adults ineligible due to employment	0	0	0	
Number of SNAP adults ineligible due to employment	25	27	24	4.17%

**IMPACT Caseloads**  
(SNAP, TANF, Total Caseload)



**Note:**

All data July 2014 and following will be broken out according to the new DFR region structure effective July 1 2014.