



## DIVISION OF FAMILY RESOURCES

# Grant County Monthly Management Report March 2018

### State of Indiana

Eric Holcomb  
Governor

### Family and Social Services Administration

Jennifer Walthall, M.D.  
Secretary

### Division of Family Resources

Adrienne Shields  
Director

For questions regarding data on this report contact:  
[office.Communications@fssa.IN.gov](mailto:office.Communications@fssa.IN.gov)



## State of Indiana

Published April 2018



## DIVISION OF FAMILY RESOURCES

### Monthly Management Report

Reporting Month: March 2018

Location: Grant County

#### TEMPORARY ASSISTANCE FOR NEEDY FAMILIES (TANF)

Child-Only and One-Parent Families	Mar 31, 2018	February 2018	March 2017	Annual Change
Number of families receiving TANF Grants	78	80	92	-15.22%
Total number of grant recipients	144	153	160	-10.00%
Number of adult grant recipients	12	14	14	-14.29%
Number of child grant recipients	132	139	146	-9.59%
Total payments	\$14,370	\$14,898	\$16,232	-11.47%
Average payment per case	\$184.23	\$186.22	\$176.43	4.42%
Average payment per recipient	\$99.79	\$97.37	\$101.45	-1.63%
Number of cases with benefits reduced to zero	0	0	1	-100.00%
Number of recipients with benefits reduced to zero	0	0	2	-100.00%
Number of adult recipients with benefit reduced to zero	0	0	0	0%
Number of child recipients with benefit reduced to zero	0	0	2	-100.00%

Two-Parent Families	Mar 31, 2018	February 2018	March 2017	Annual Change
Number of families receiving TANF Grants	2	3	5	-60.00%
Total number of grant recipients	3	7	12	-75.00%
Number of adult grant recipients	0	2	3	-100.00%
Number of child grant recipients	3	5	9	-66.67%
Total payments	\$337	\$476	\$844	-60.07%
Average payment per case	\$168.50	\$158.67	\$168.80	-0.18%
Average payment per recipient	\$112.33	\$68.00	\$70.33	59.72%
Number of cases with benefits reduced to zero	0	0	0	0%
Number of recipients with benefits reduced to zero	0	0	0	0%
Number of adult recipients with benefit reduced to zero	0	0	0	0%
Number of child recipients with benefit reduced to zero	0	0	0	0%

**Note:**

All data July 2014 and following will be broken out according to the new DFR region structure effective July 1 2014.

Source:



## DIVISION OF FAMILY RESOURCES

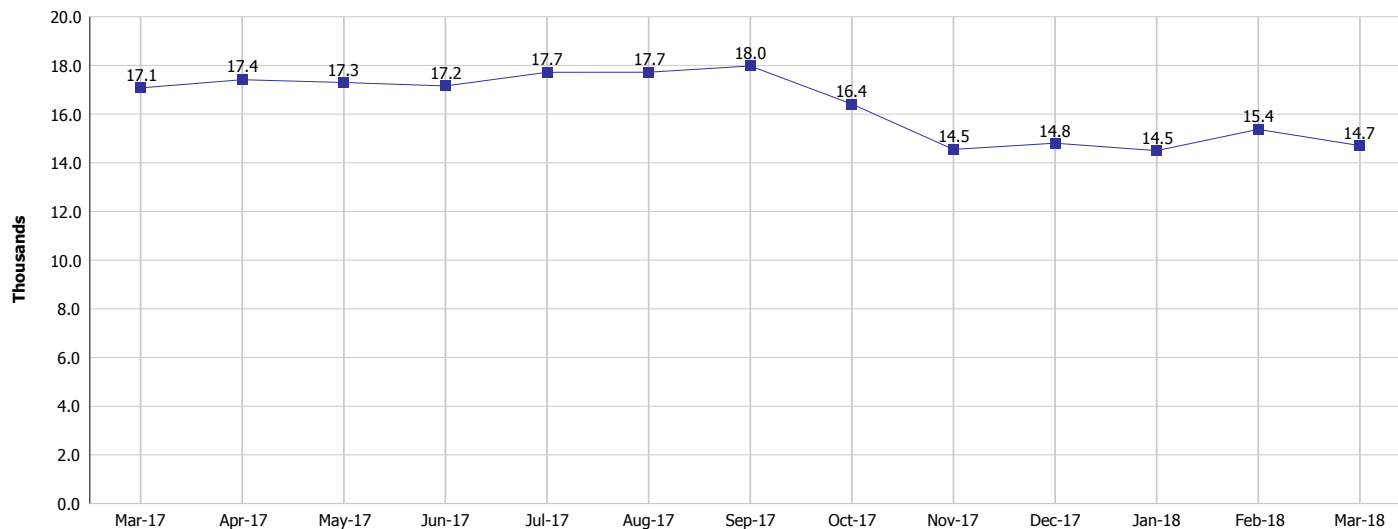
### Monthly Management Report

Reporting Month: March 2018

Location: Grant County

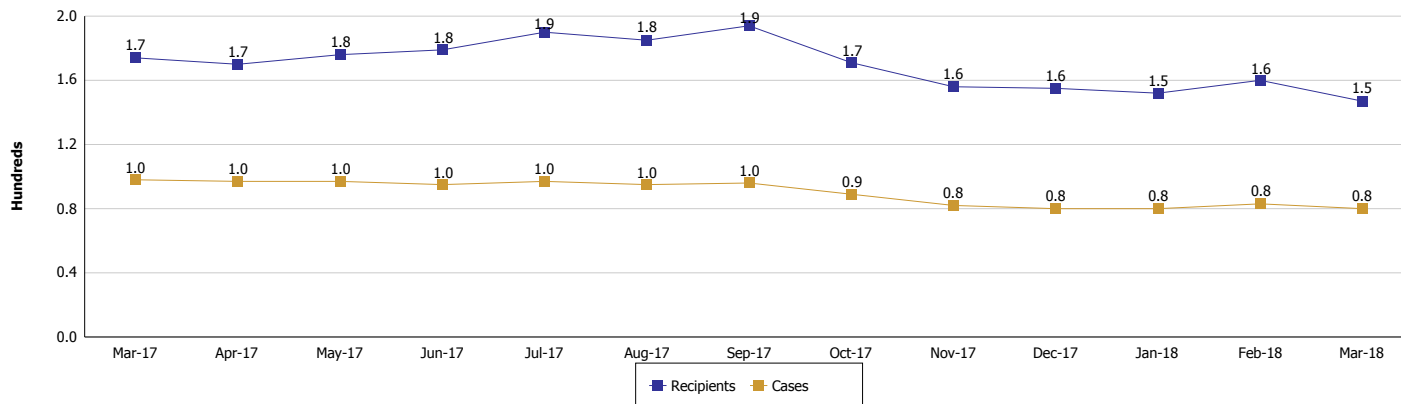
#### TEMPORARY ASSISTANCE FOR NEEDY FAMILIES (TANF)

#### TANF Regular And TANF Two-Parent Cash Assistance



#### TANF Cases and Recipients

(TANF Regular and TANF Two-Parent)



#### Note:

All data July 2014 and following will be broken out according to the new DFR region structure effective July 1 2014.



## DIVISION OF FAMILY RESOURCES

### Monthly Management Report

Reporting Month: March 2018

Location: Grant County

#### SUPPLEMENTAL NUTRITION ASSISTANCE PROGRAM (SNAP)

	March 2018	February 2018	March 2017	Annual Change
Total issuance	\$1,066,081	\$1,052,930	\$1,155,269	-7.72%
Number of households receiving SNAP benefits	4,339	4,327	4,585	-5.37%
Number of recipients	9,338	9,265	10,074	-7.31%
Average issuance per household	\$245.7	\$243.34	\$251.97	-2.49%
Average issuance per recipient	\$114.17	\$113.65	\$114.68	-0.44%

**Note:**

All data July 2014 and following will be broken out according to the new DFR region structure effective July 1 2014.



# DIVISION OF FAMILY RESOURCES

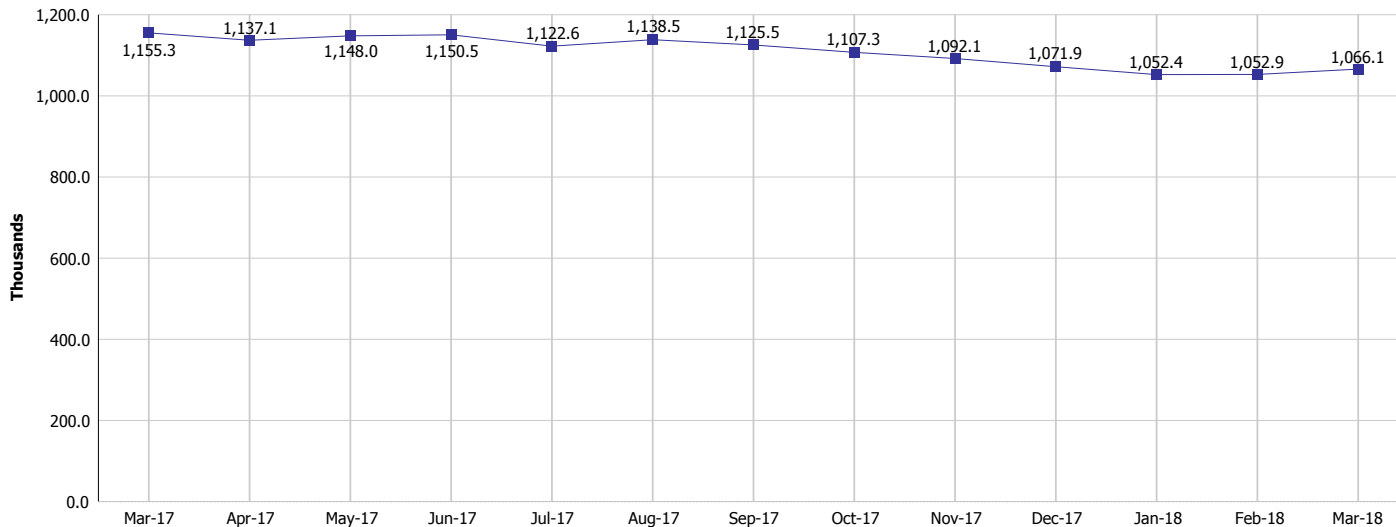
## Monthly Management Report

Reporting Month: March 2018

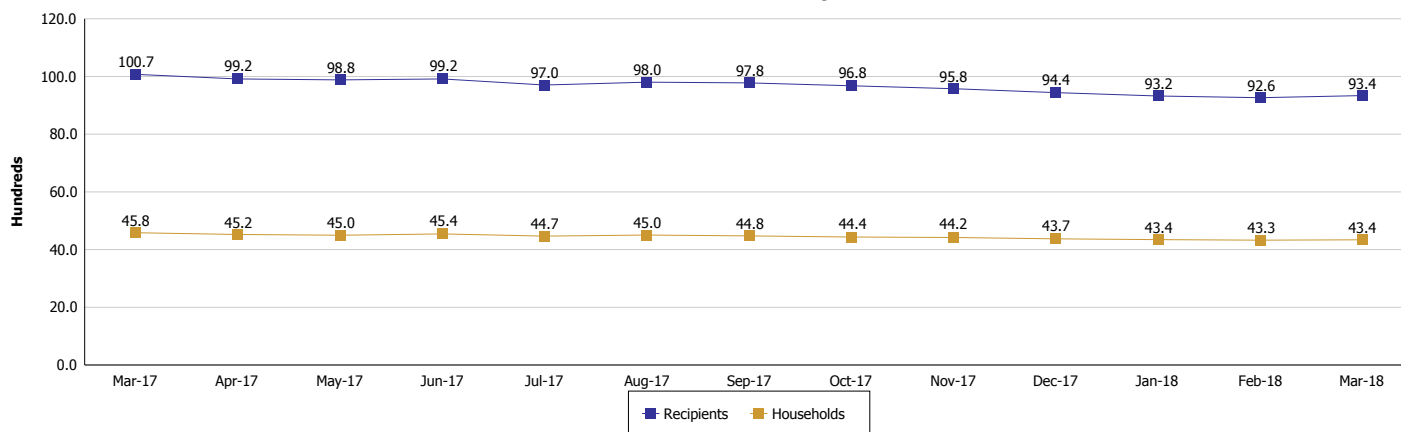
Location: Grant County

### SUPPLEMENTAL NUTRITION ASSISTANCE PROGRAM (SNAP)

#### SNAP Issuance



#### SNAP Households and Recipients



**Note:**

All data July 2014 and following will be broken out according to the new DFR region structure effective July 1 2014.



## DIVISION OF FAMILY RESOURCES

### Monthly Management Report

Reporting Month: March 2018

Location: Grant County

#### HIP 2.0 and SNAP

	March 2018	February 2018	March 2017	Annual Change
Total HIP 2.0 Members	5,499	5,517	5,647	-2.62%
HIP Members also SNAP Recipients	2,245	2,240	2,432	-7.69%
Percentage HIP Members SNAP Recipients	40.8%	40.6%	43.1%	-4.70%
HIP Members SNAP ABAWDs	50	60	99	-49.49%
Percentage HIP Members SNAP ABAWDs	0.9%	1.1%	1.8%	-4.70%

**Note:**

All data July 2014 and following will be broken out according to the new DFR region structure effective July 1 2014.



## DIVISION OF FAMILY RESOURCES

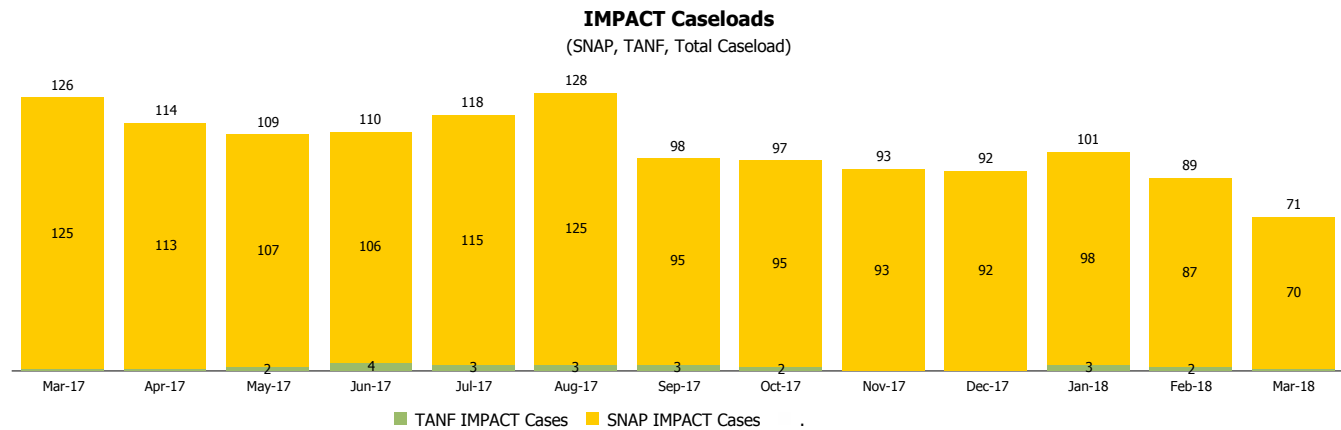
### Monthly Management Report

Reporting Month: March 2018

Location: Grant County

#### INDIANA MANPOWER PLACEMENT AND COMPREHENSIVE TRAINING (IMPACT)

	March 2018	February 2018	March 2017	Annual Change
Number of IMPACT cases	71	89	126	-43.65%
Number of TANF IMPACT adults	1	2	1	0.00%
Number of SNAP IMPACT Cases	70	87	125	-44.00%
Total number of adults employed	16	13	27	-40.74%
Number of TANF IMPACT adults newly employed (within past 30 days)	1	1	0	
Number of SNAP IMPACT adults employed	15	12	27	-44.44%
Total number of adults ineligible due to employment	58	68	69	-15.94%
Number of TANF adults ineligible due to employment	1	0	0	
Number of SNAP adults ineligible due to employment	57	68	69	-17.39%



**Note:**

All data July 2014 and following will be broken out according to the new DFR region structure effective July 1 2014.