



DIVISION OF FAMILY RESOURCES

Fulton County Monthly Management Report August 2017

State of Indiana

Eric Holcomb
Governor

Family and Social Services Administration

Jennifer Walthall, M.D.
Secretary

Division of Family Resources

Adrienne Shields
Director

For questions regarding data on this report contact:
office.Communications@fssa.IN.gov



State of Indiana

Published September 2017



DIVISION OF FAMILY RESOURCES

Monthly Management Report

Reporting Month: August 2017

Location: Fulton County

TEMPORARY ASSISTANCE FOR NEEDY FAMILIES (TANF)

Child-Only and One-Parent Families	Aug 31, 2017	July 2017	August 2016	Annual Change
Number of families receiving TANF Grants	20	20	19	5.26%
Total number of grant recipients	27	27	34	-20.59%
Number of adult grant recipients	3	3	5	-40.00%
Number of child grant recipients	24	24	29	-17.24%
Total payments	\$3,242	\$3,242	\$3,270	-0.86%
Average payment per case	\$162.10	\$162.10	\$172.11	-5.81%
Average payment per recipient	\$120.07	\$120.07	\$96.18	24.85%
Number of cases with benefits reduced to zero	0	0	0	0%
Number of recipients with benefits reduced to zero	0	0	0	0%
Number of adult recipients with benefit reduced to zero	0	0	0	0%
Number of child recipients with benefit reduced to zero	0	0	0	0%

Two-Parent Families	Aug 31, 2017	July 2017	August 2016	Annual Change
Number of families receiving TANF Grants	0	0	1	-100.00%
Total number of grant recipients	0	0	2	-100.00%
Number of adult grant recipients	0	0	1	-100.00%
Number of child grant recipients	0	0	1	-100.00%
Total payments	\$0	\$0	\$229	-100.00%
Average payment per case	\$0.00	\$0.00	\$229.00	-100.00%
Average payment per recipient	\$0.00	\$0.00	\$114.50	-100.00%
Number of cases with benefits reduced to zero	0	0	0	0%
Number of recipients with benefits reduced to zero	0	0	0	0%
Number of adult recipients with benefit reduced to zero	0	0	0	0%
Number of child recipients with benefit reduced to zero	0	0	0	0%

Note:

All data July 2014 and following will be broken out according to the new DFR region structure effective July 1 2014.

Source:



DIVISION OF FAMILY RESOURCES

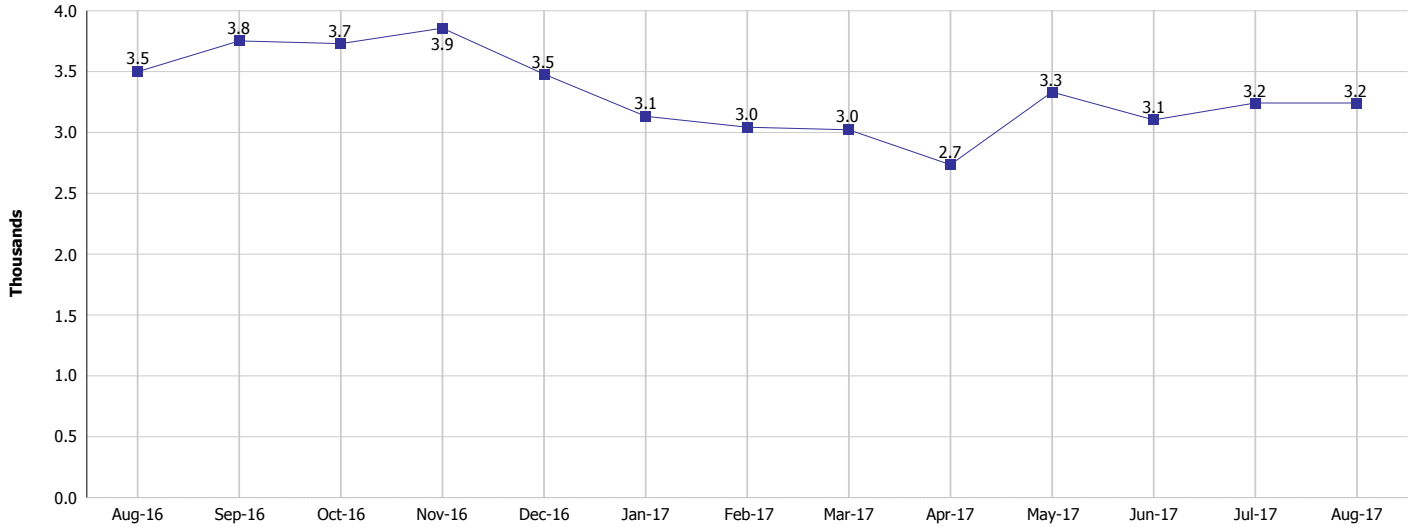
Monthly Management Report

Reporting Month: August 2017

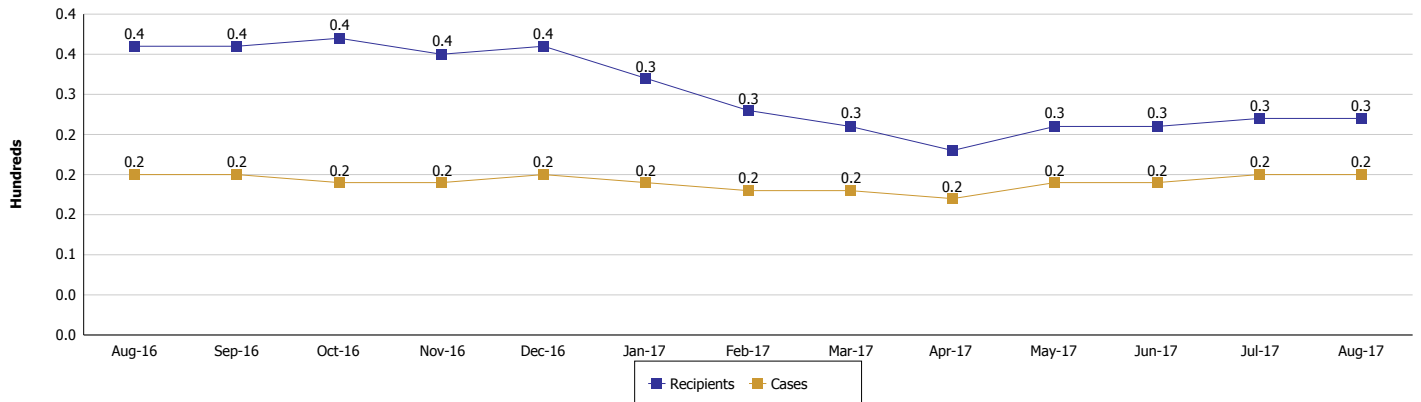
Location: Fulton County

TEMPORARY ASSISTANCE FOR NEEDY FAMILIES (TANF)

TANF Regular And TANF Two-Parent Cash Assistance



TANF Cases and Recipients (TANF Regular and TANF Two-Parent)



Note:

All data July 2014 and following will be broken out according to the new DFR region structure effective July 1 2014.



DIVISION OF FAMILY RESOURCES

Monthly Management Report

Reporting Month: August 2017

Location: Fulton County

SUPPLEMENTAL NUTRITION ASSISTANCE PROGRAM (SNAP)

	August 2017	July 2017	August 2016	Annual Change
Total issuance	\$195,671	\$207,086	\$245,988	-20.46%
Number of households receiving SNAP benefits	795	811	943	-15.69%
Number of recipients	1,823	1,873	2,239	-18.58%
Average issuance per household	\$246.13	\$255.35	\$260.86	-5.65%
Average issuance per recipient	\$107.33	\$110.56	\$109.87	-2.31%

Note:

All data July 2014 and following will be broken out according to the new DFR region structure effective July 1 2014.



DIVISION OF FAMILY RESOURCES

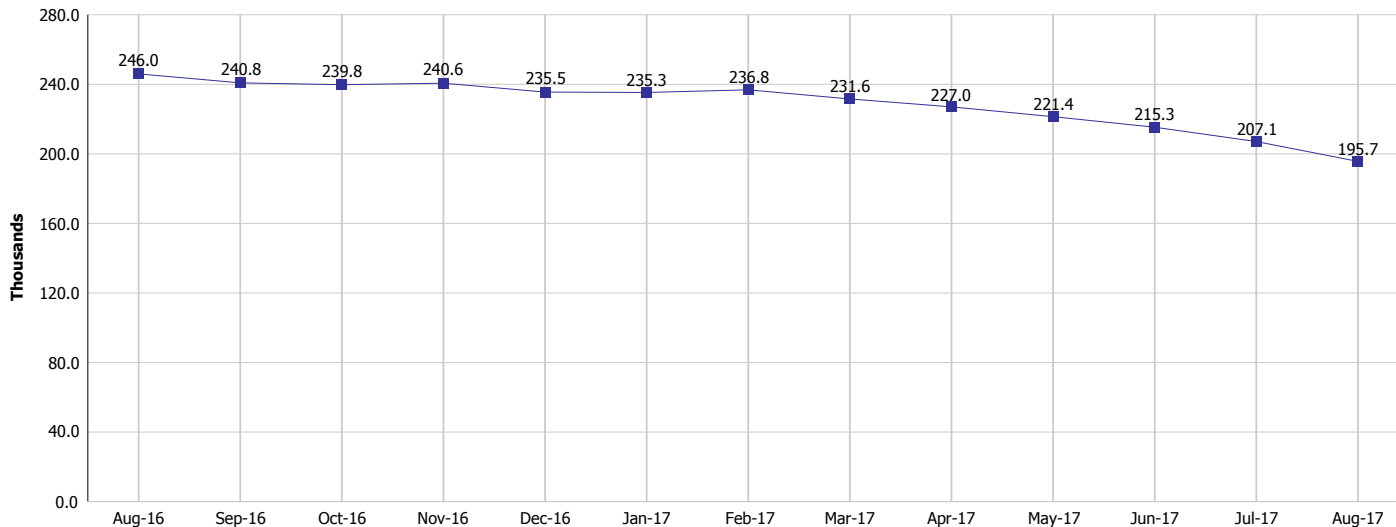
Monthly Management Report

Reporting Month: August 2017

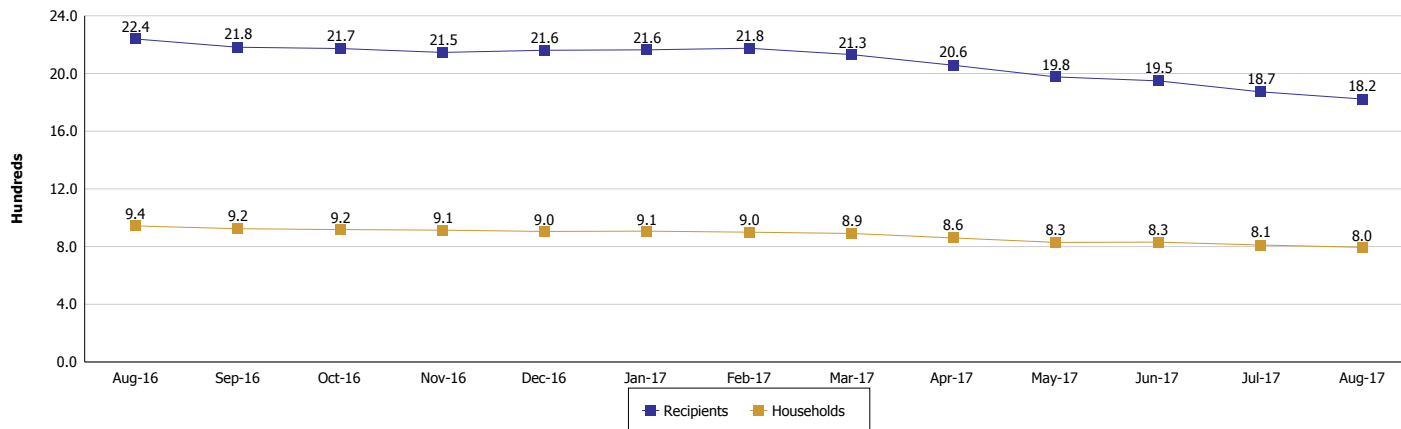
Location: Fulton County

SUPPLEMENTAL NUTRITION ASSISTANCE PROGRAM (SNAP)

SNAP Issuance



SNAP Households and Recipients



Note:

All data July 2014 and following will be broken out according to the new DFR region structure effective July 1 2014.



DIVISION OF FAMILY RESOURCES

Monthly Management Report

Reporting Month: August 2017

Location: Fulton County

HIP 2.0 and SNAP

	August 2017	July 2017	August 2016	Annual Change
Total HIP 2.0 Members	1,416	1,404	1,324	6.95%
HIP Members also SNAP Recipients	441	453	544	-18.93%
Percentage HIP Members SNAP Recipients	31.1%	32.3%	41.1%	-0.53%
HIP Members SNAP ABAWDs	9	8	8	12.50%
Percentage HIP Members SNAP ABAWDs	0.6%	0.6%	0.6%	-0.53%

Note:

All data July 2014 and following will be broken out according to the new DFR region structure effective July 1 2014.



DIVISION OF FAMILY RESOURCES

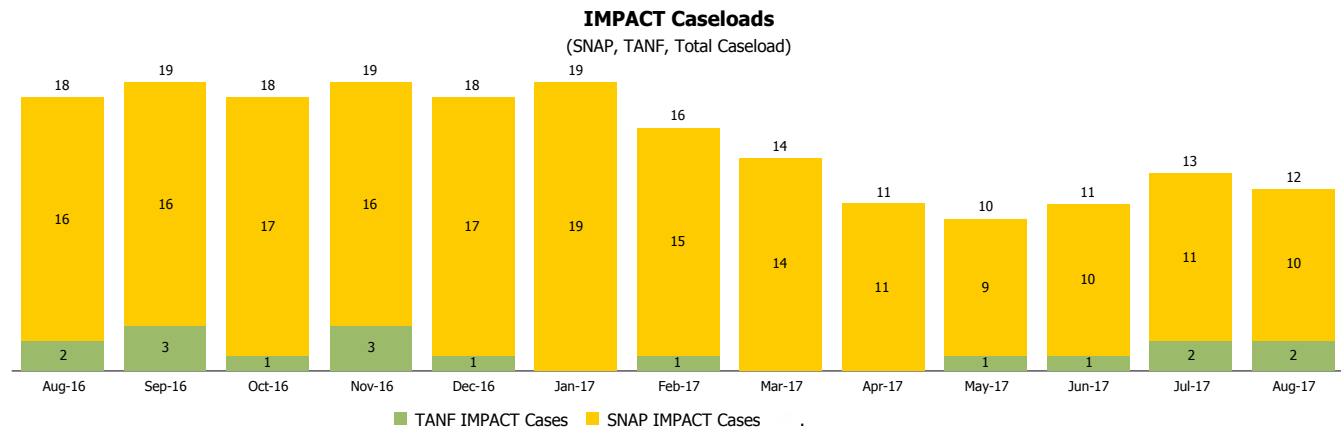
Monthly Management Report

Reporting Month: August 2017

Location: Fulton County

INDIANA MANPOWER PLACEMENT AND COMPREHENSIVE TRAINING (IMPACT)

	August 2017	July 2017	August 2016	Annual Change
Number of IMPACT cases	12	13	18	-33.33%
Number of TANF IMPACT adults	2	2	2	0.00%
Number of SNAP IMPACT Cases	10	11	16	-37.50%
Total number of adults employed	2	4	5	-60.00%
Number of TANF IMPACT adults newly employed (within past 30 days)	1	0	0	
Number of SNAP IMPACT adults employed	1	4	5	-80.00%
Total number of adults ineligible due to employment	24	16	18	33.33%
Number of TANF adults ineligible due to employment	0	0	0	
Number of SNAP adults ineligible due to employment	24	16	18	33.33%



Note:

All data July 2014 and following will be broken out according to the new DFR region structure effective July 1 2014.