



DIVISION OF FAMILY RESOURCES

Elkhart County Monthly Management Report August 2017

State of Indiana

Eric Holcomb
Governor

Family and Social Services Administration

Jennifer Walthall, M.D.
Secretary

Division of Family Resources

Adrienne Shields
Director

For questions regarding data on this report contact:
office.Communications@fssa.IN.gov



State of Indiana

Published September 2017



DIVISION OF FAMILY RESOURCES

Monthly Management Report

Reporting Month: August 2017

Location: Elkhart County

TEMPORARY ASSISTANCE FOR NEEDY FAMILIES (TANF)

Child-Only and One-Parent Families	Aug 31, 2017	July 2017	August 2016	Annual Change
Number of families receiving TANF Grants	172	172	193	-10.88%
Total number of grant recipients	396	391	415	-4.58%
Number of adult grant recipients	61	61	69	-11.59%
Number of child grant recipients	335	330	346	-3.18%
Total payments	\$33,161	\$33,269	\$36,567	-9.31%
Average payment per case	\$192.80	\$193.42	\$189.47	1.76%
Average payment per recipient	\$83.74	\$85.09	\$88.11	-4.96%
Number of cases with benefits reduced to zero	2	3	5	-60.00%
Number of recipients with benefits reduced to zero	5	7	14	-64.29%
Number of adult recipients with benefit reduced to zero	1	1	4	-75.00%
Number of child recipients with benefit reduced to zero	4	6	10	-60.00%

Two-Parent Families	Aug 31, 2017	July 2017	August 2016	Annual Change
Number of families receiving TANF Grants	8	6	13	-38.46%
Total number of grant recipients	41	32	59	-30.51%
Number of adult grant recipients	15	11	23	-34.78%
Number of child grant recipients	26	21	36	-27.78%
Total payments	\$2,202	\$1,693	\$2,652	-16.97%
Average payment per case	\$275.25	\$282.17	\$204.00	34.93%
Average payment per recipient	\$53.71	\$52.91	\$44.95	19.48%
Number of cases with benefits reduced to zero	0	0	1	-100.00%
Number of recipients with benefits reduced to zero	0	0	2	-100.00%
Number of adult recipients with benefit reduced to zero	0	0	2	-100.00%
Number of child recipients with benefit reduced to zero	0	0	0	0%

Note:

All data July 2014 and following will be broken out according to the new DFR region structure effective July 1 2014.

Source:



DIVISION OF FAMILY RESOURCES

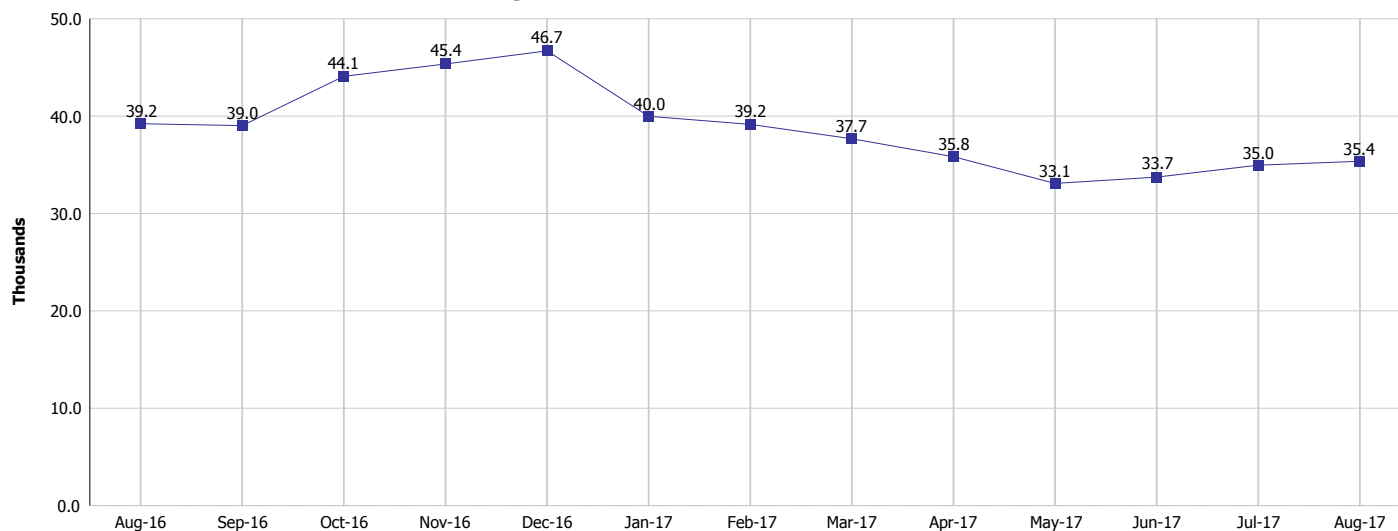
Monthly Management Report

Reporting Month: August 2017

Location: Elkhart County

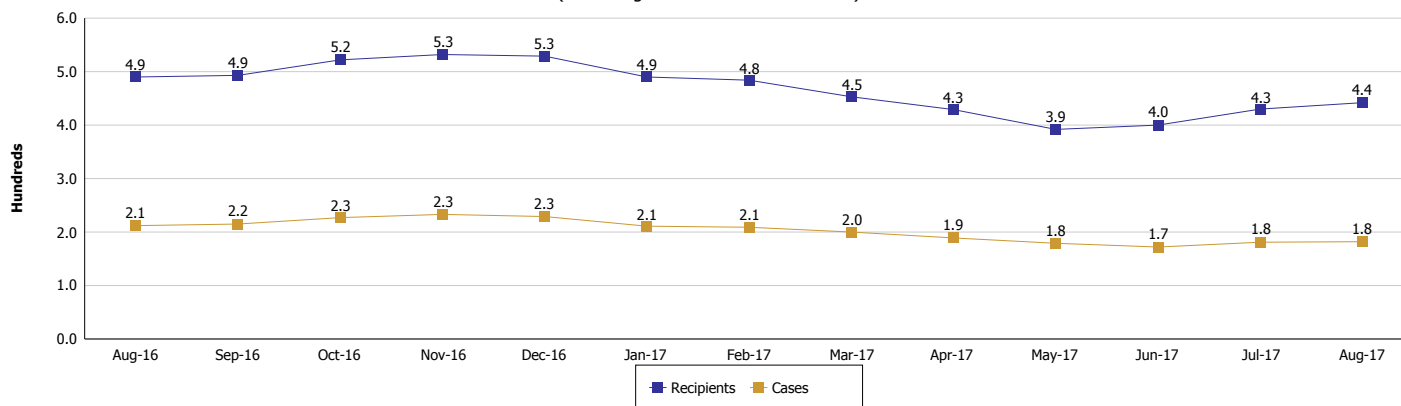
TEMPORARY ASSISTANCE FOR NEEDY FAMILIES (TANF)

TANF Regular And TANF Two-Parent Cash Assistance



TANF Cases and Recipients

(TANF Regular and TANF Two-Parent)



Note:

All data July 2014 and following will be broken out according to the new DFR region structure effective July 1 2014.



DIVISION OF FAMILY RESOURCES

Monthly Management Report

Reporting Month: August 2017

Location: Elkhart County

SUPPLEMENTAL NUTRITION ASSISTANCE PROGRAM (SNAP)

	August 2017	July 2017	August 2016	Annual Change
Total issuance	\$1,899,074	\$1,886,422	\$2,255,606	-15.81%
Number of households receiving SNAP benefits	6,651	6,631	7,834	-15.10%
Number of recipients	16,030	15,917	18,897	-15.17%
Average issuance per household	\$285.53	\$284.49	\$287.93	-0.83%
Average issuance per recipient	\$118.47	\$118.52	\$119.36	-0.75%

Note:

All data July 2014 and following will be broken out according to the new DFR region structure effective July 1 2014.



DIVISION OF FAMILY RESOURCES

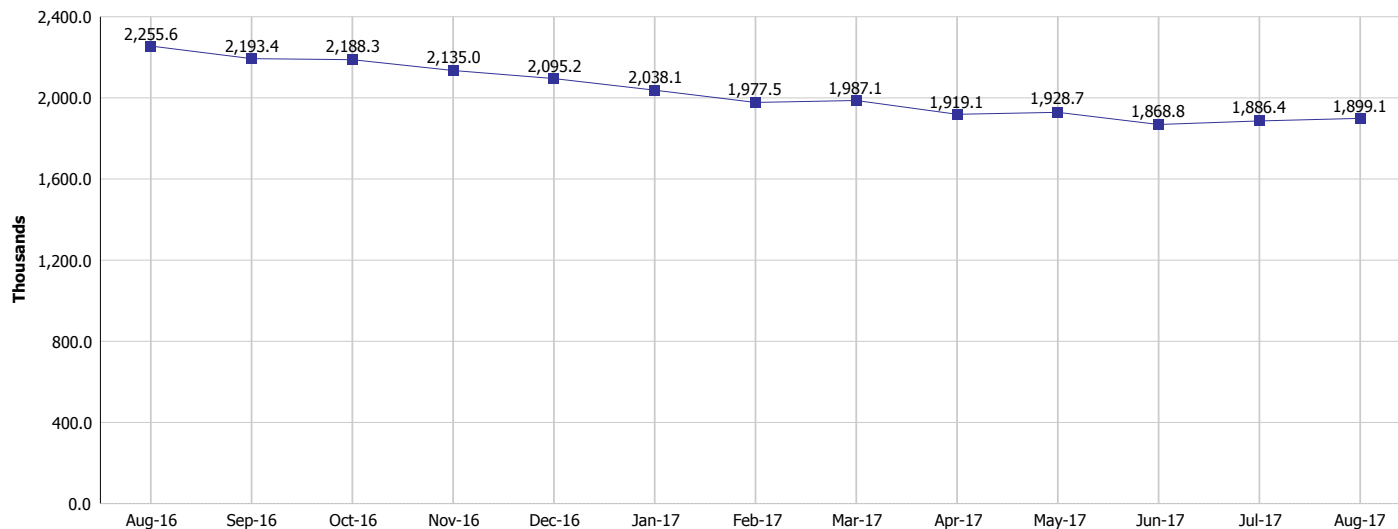
Monthly Management Report

Reporting Month: August 2017

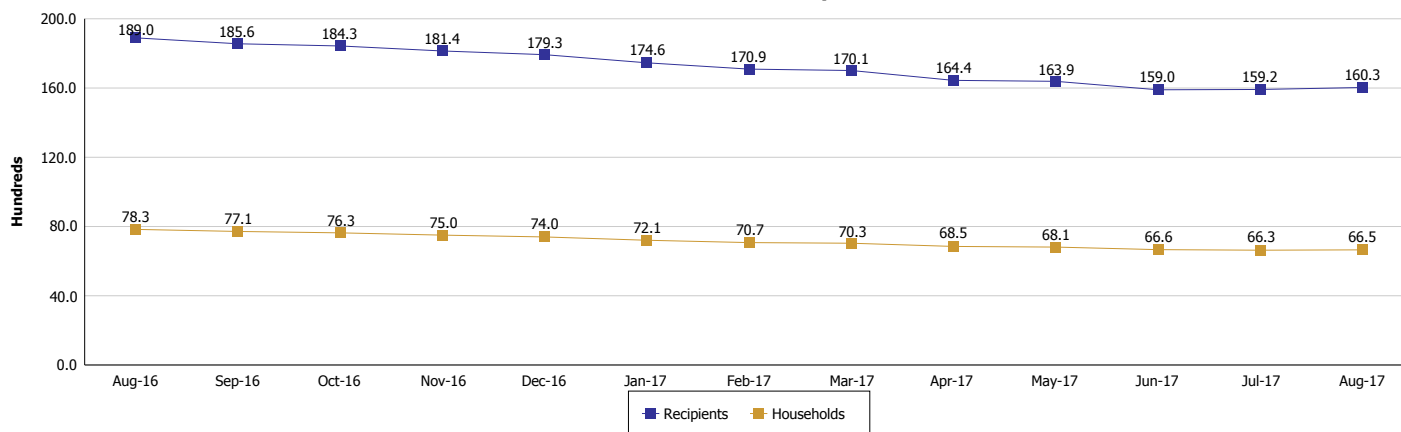
Location: Elkhart County

SUPPLEMENTAL NUTRITION ASSISTANCE PROGRAM (SNAP)

SNAP Issuance



SNAP Households and Recipients



Note:

All data July 2014 and following will be broken out according to the new DFR region structure effective July 1 2014.



DIVISION OF FAMILY RESOURCES

Monthly Management Report

Reporting Month: August 2017

Location: Elkhart County

HIP 2.0 and SNAP

	August 2017	July 2017	August 2016	Annual Change
Total HIP 2.0 Members	10,915	10,871	10,373	5.23%
HIP Members also SNAP Recipients	3,255	3,258	3,832	-15.06%
Percentage HIP Members SNAP Recipients	29.8%	30.0%	36.9%	-0.59%
HIP Members SNAP ABAWDs	76	72	126	-39.68%
Percentage HIP Members SNAP ABAWDs	0.7%	0.7%	1.2%	-0.59%

Note:

All data July 2014 and following will be broken out according to the new DFR region structure effective July 1 2014.



DIVISION OF FAMILY RESOURCES

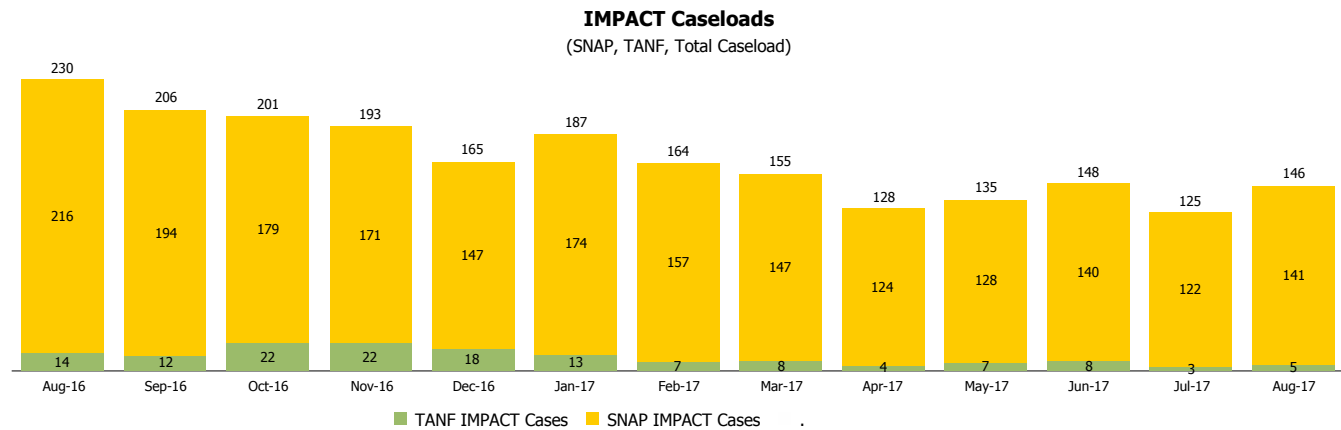
Monthly Management Report

Reporting Month: August 2017

Location: Elkhart County

INDIANA MANPOWER PLACEMENT AND COMPREHENSIVE TRAINING (IMPACT)

	August 2017	July 2017	August 2016	Annual Change
Number of IMPACT cases	146	125	230	-36.52%
Number of TANF IMPACT adults	5	3	14	-64.29%
Number of SNAP IMPACT Cases	141	122	216	-34.72%
Total number of adults employed	25	36	50	-50.00%
Number of TANF IMPACT adults newly employed (within past 30 days)	2	1	7	-71.43%
Number of SNAP IMPACT adults employed	23	35	43	-46.51%
Total number of adults ineligible due to employment	114	139	166	-31.33%
Number of TANF adults ineligible due to employment	0	0	1	-100.00%
Number of SNAP adults ineligible due to employment	114	139	165	-30.91%



Note:

All data July 2014 and following will be broken out according to the new DFR region structure effective July 1 2014.