



DIVISION OF FAMILY RESOURCES

Delaware County Monthly Management Report October 2017

State of Indiana

Eric Holcomb
Governor

Family and Social Services Administration

Jennifer Walthall, M.D.
Secretary

Division of Family Resources

Adrienne Shields
Director

For questions regarding data on this report contact:
office.Communications@fssa.IN.gov



State of Indiana

Published November 2017



DIVISION OF FAMILY RESOURCES

Monthly Management Report

Reporting Month: October 2017

Location: Delaware County

TEMPORARY ASSISTANCE FOR NEEDY FAMILIES (TANF)

Child-Only and One-Parent Families	Oct 31, 2017	September 2017	October 2016	Annual Change
Number of families receiving TANF Grants	145	151	176	-17.61%
Total number of grant recipients	281	292	347	-19.02%
Number of adult grant recipients	29	34	45	-35.56%
Number of child grant recipients	252	258	302	-16.56%
Total payments	\$26,552	\$28,636	\$33,689	-21.18%
Average payment per case	\$183.12	\$189.64	\$191.41	-4.33%
Average payment per recipient	\$94.49	\$98.07	\$97.09	-2.67%
Number of cases with benefits reduced to zero	3	4	1	200.00%
Number of recipients with benefits reduced to zero	4	8	2	100.00%
Number of adult recipients with benefit reduced to zero	0	0	0	0%
Number of child recipients with benefit reduced to zero	4	8	2	100.00%

Two-Parent Families	Oct 31, 2017	September 2017	October 2016	Annual Change
Number of families receiving TANF Grants	7	7	6	16.67%
Total number of grant recipients	17	17	19	-10.53%
Number of adult grant recipients	6	6	6	0.00%
Number of child grant recipients	11	11	13	-15.38%
Total payments	\$1,097	\$1,097	\$1,551	-29.27%
Average payment per case	\$156.71	\$156.71	\$258.50	-39.38%
Average payment per recipient	\$64.53	\$64.53	\$81.63	-20.95%
Number of cases with benefits reduced to zero	0	0	0	0%
Number of recipients with benefits reduced to zero	0	0	0	0%
Number of adult recipients with benefit reduced to zero	0	0	0	0%
Number of child recipients with benefit reduced to zero	0	0	0	0%

Note:

All data July 2014 and following will be broken out according to the new DFR region structure effective July 1 2014.

Source:



DIVISION OF FAMILY RESOURCES

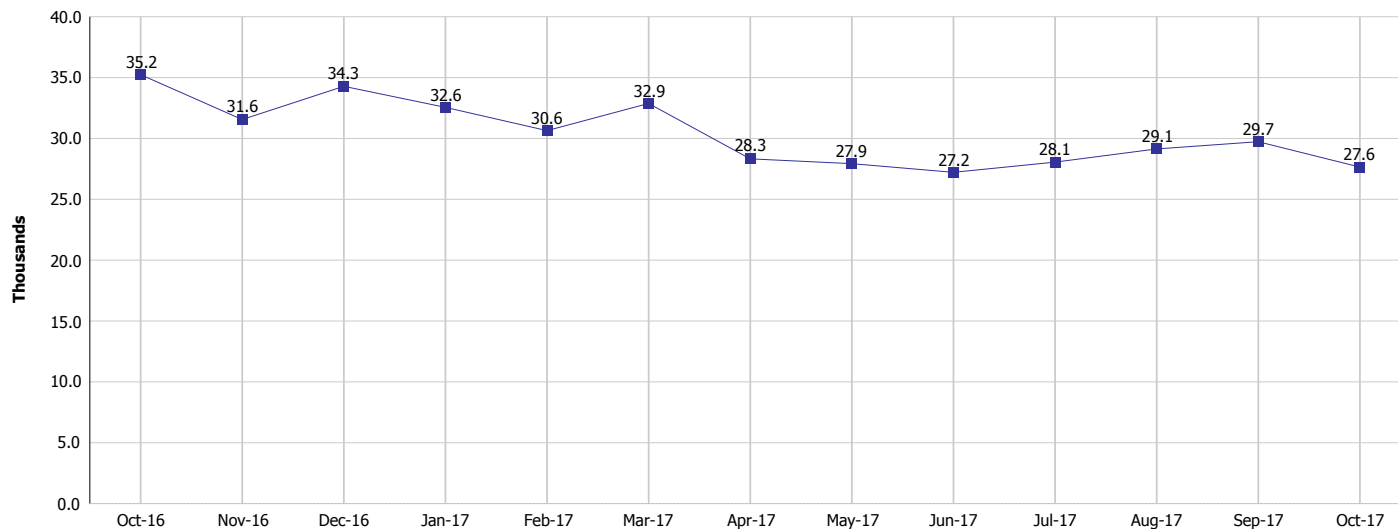
Monthly Management Report

Reporting Month: October 2017

Location: Delaware County

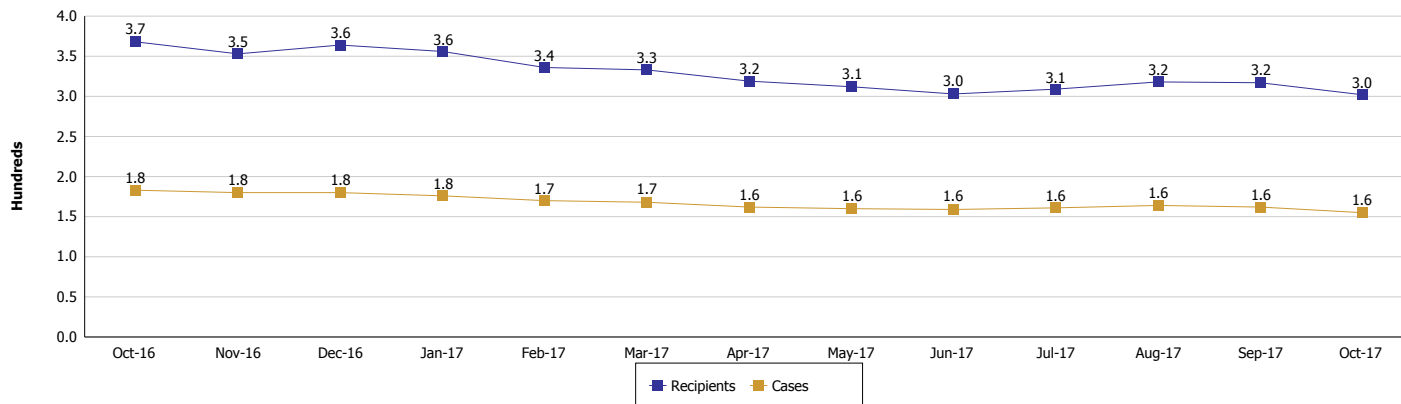
TEMPORARY ASSISTANCE FOR NEEDY FAMILIES (TANF)

TANF Regular And TANF Two-Parent Cash Assistance



TANF Cases and Recipients

(TANF Regular and TANF Two-Parent)



Note:

All data July 2014 and following will be broken out according to the new DFR region structure effective July 1 2014.



DIVISION OF FAMILY RESOURCES

Monthly Management Report

Reporting Month: October 2017

Location: Delaware County

SUPPLEMENTAL NUTRITION ASSISTANCE PROGRAM (SNAP)

	October 2017	September 2017	October 2016	Annual Change
Total issuance	\$1,698,664	\$1,726,963	\$1,864,498	-8.89%
Number of households receiving SNAP benefits	6,764	6,796	7,424	-8.89%
Number of recipients	14,082	14,138	15,530	-9.32%
Average issuance per household	\$251.13	\$254.11	\$251.14	0.00%
Average issuance per recipient	\$120.63	\$122.15	\$120.06	0.47%

Note:

All data July 2014 and following will be broken out according to the new DFR region structure effective July 1 2014.



DIVISION OF FAMILY RESOURCES

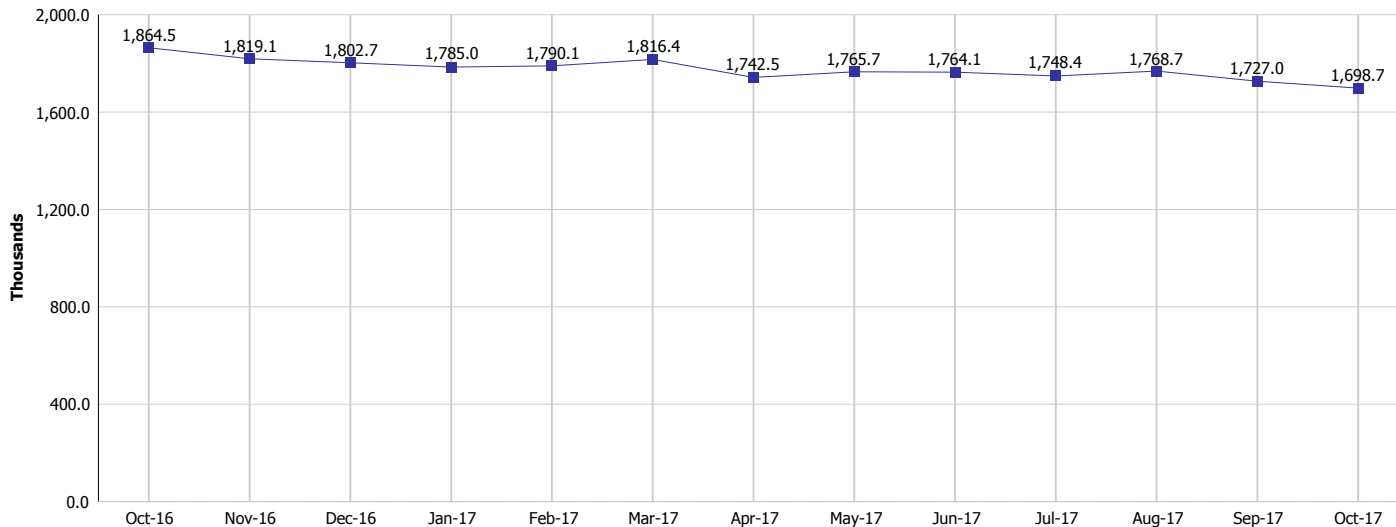
Monthly Management Report

Reporting Month: October 2017

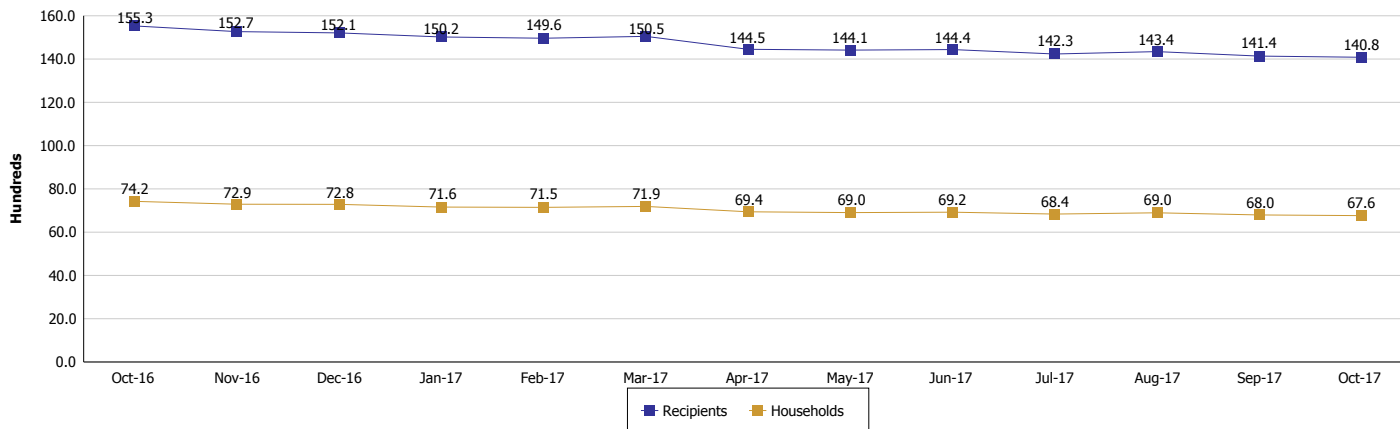
Location: Delaware County

SUPPLEMENTAL NUTRITION ASSISTANCE PROGRAM (SNAP)

SNAP Issuance



SNAP Households and Recipients



Note:

All data July 2014 and following will be broken out according to the new DFR region structure effective July 1 2014.



DIVISION OF FAMILY RESOURCES

Monthly Management Report

Reporting Month: October 2017

Location: Delaware County

HIP 2.0 and SNAP

	October 2017	September 2017	October 2016	Annual Change
Total HIP 2.0 Members	9,058	9,076	8,931	1.42%
HIP Members also SNAP Recipients	3,715	3,711	3,998	-7.08%
Percentage HIP Members SNAP Recipients	41.0%	40.9%	44.8%	-1.48%
HIP Members SNAP ABAWDs	119	123	157	-24.20%
Percentage HIP Members SNAP ABAWDs	1.3%	1.4%	1.8%	-1.48%

Note:

All data July 2014 and following will be broken out according to the new DFR region structure effective July 1 2014.



DIVISION OF FAMILY RESOURCES

Monthly Management Report

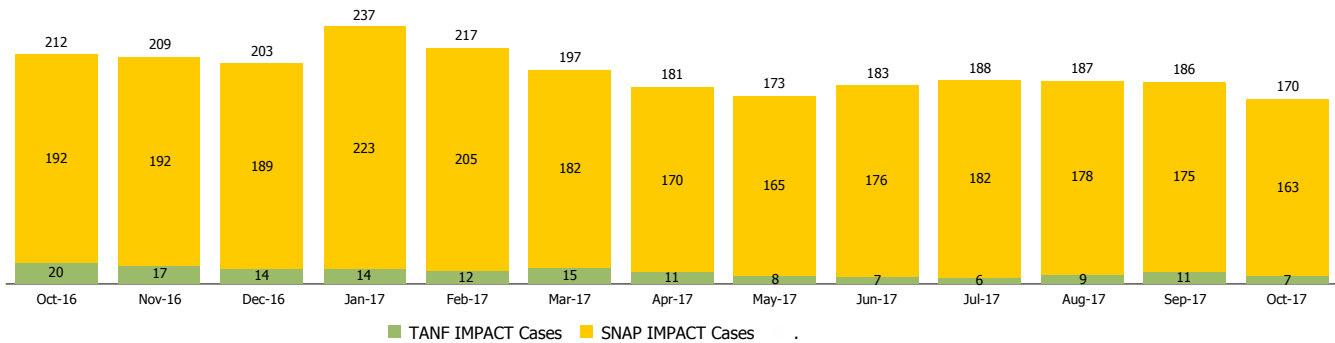
Reporting Month: October 2017

Location: Delaware County

INDIANA MANPOWER PLACEMENT AND COMPREHENSIVE TRAINING (IMPACT)

	October 2017	September 2017	October 2016	Annual Change
Number of IMPACT cases	170	186	212	-19.81%
Number of TANF IMPACT adults	7	11	20	-65.00%
Number of SNAP IMPACT Cases	163	175	192	-15.10%
Total number of adults employed	78	27	33	136.36%
Number of TANF IMPACT adults newly employed (within past 30 days)	4	1	3	33.33%
Number of SNAP IMPACT adults employed	74	26	30	146.67%
Total number of adults ineligible due to employment	115	119	112	2.68%
Number of TANF adults ineligible due to employment	0	1	0	
Number of SNAP adults ineligible due to employment	115	118	112	2.68%

IMPACT Caseloads
(SNAP, TANF, Total Caseload)



Note:

All data July 2014 and following will be broken out according to the new DFR region structure effective July 1 2014.