



DIVISION OF FAMILY RESOURCES

Dekalb County Monthly Management Report October 2017

State of Indiana

Eric Holcomb
Governor

Family and Social Services Administration

Jennifer Walthall, M.D.
Secretary

Division of Family Resources

Adrienne Shields
Director

For questions regarding data on this report contact:
office.Communications@fssa.IN.gov



State of Indiana

Published November 2017



DIVISION OF FAMILY RESOURCES

Monthly Management Report

Reporting Month: October 2017

Location: Dekalb County

TEMPORARY ASSISTANCE FOR NEEDY FAMILIES (TANF)

Child-Only and One-Parent Families	Oct 31, 2017	September 2017	October 2016	Annual Change
Number of families receiving TANF Grants	39	41	43	-9.30%
Total number of grant recipients	71	70	80	-11.25%
Number of adult grant recipients	5	5	6	-16.67%
Number of child grant recipients	66	65	74	-10.81%
Total payments	\$7,013	\$7,128	\$7,855	-10.72%
Average payment per case	\$179.82	\$173.85	\$182.67	-1.56%
Average payment per recipient	\$98.77	\$101.83	\$98.19	0.60%
Number of cases with benefits reduced to zero	1	1	0	0%
Number of recipients with benefits reduced to zero	1	4	0	0%
Number of adult recipients with benefit reduced to zero	0	0	0	0%
Number of child recipients with benefit reduced to zero	1	4	0	0%

Two-Parent Families	Oct 31, 2017	September 2017	October 2016	Annual Change
Number of families receiving TANF Grants	2	2	2	0.00%
Total number of grant recipients	5	5	6	-16.67%
Number of adult grant recipients	2	2	2	0.00%
Number of child grant recipients	3	3	4	-25.00%
Total payments	\$427	\$885	\$486	-12.14%
Average payment per case	\$213.50	\$442.50	\$243.00	-12.14%
Average payment per recipient	\$85.40	\$177.00	\$81.00	5.43%
Number of cases with benefits reduced to zero	0	0	0	0%
Number of recipients with benefits reduced to zero	0	0	0	0%
Number of adult recipients with benefit reduced to zero	0	0	0	0%
Number of child recipients with benefit reduced to zero	0	0	0	0%

Note:

All data July 2014 and following will be broken out according to the new DFR region structure effective July 1 2014.

Source:



DIVISION OF FAMILY RESOURCES

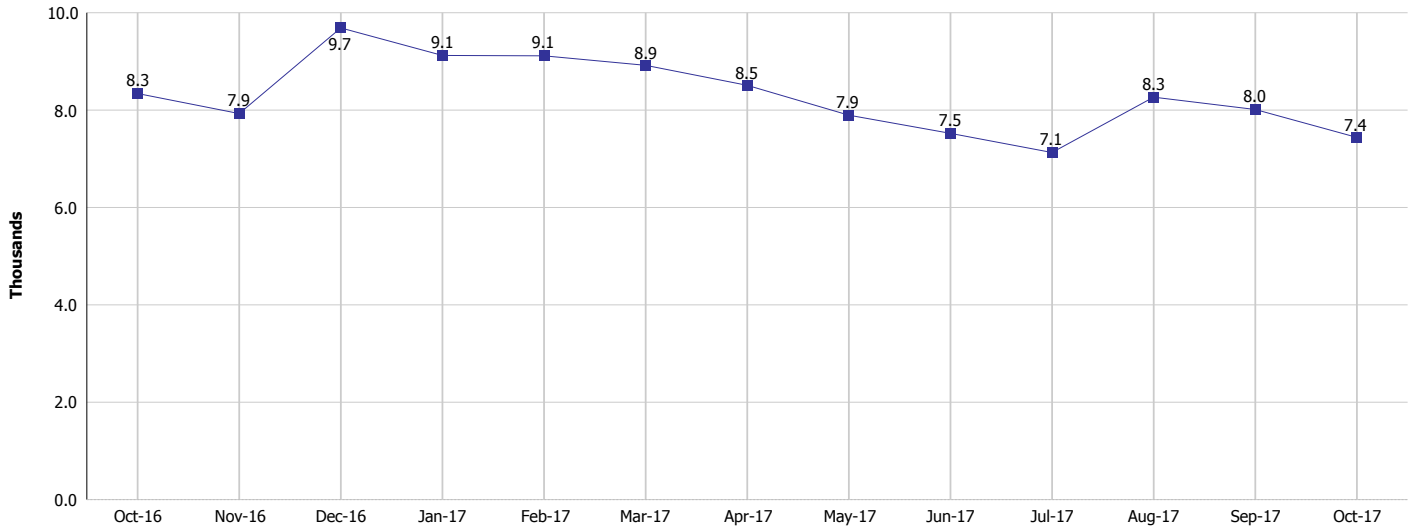
Monthly Management Report

Reporting Month: October 2017

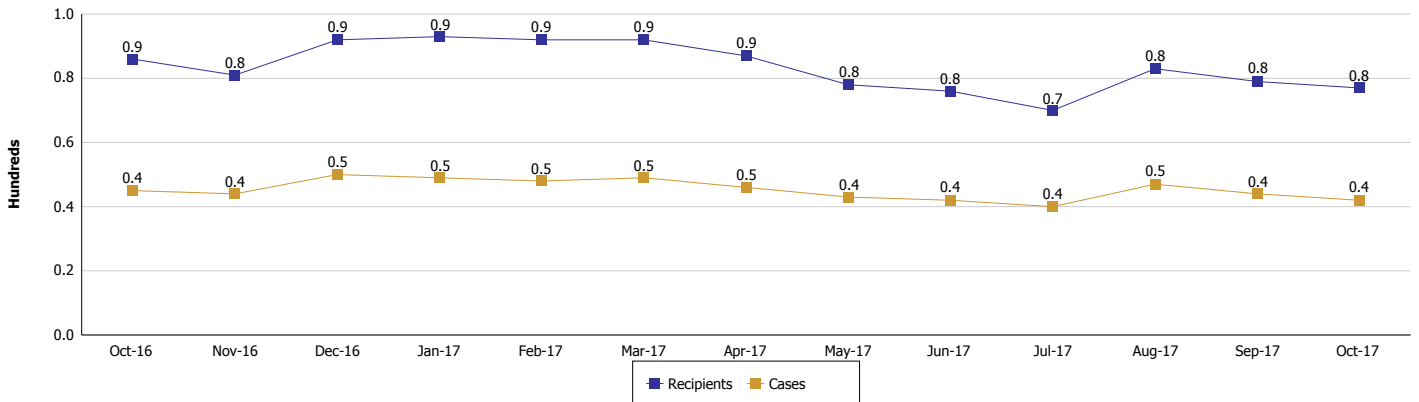
Location: DeKalb County

TEMPORARY ASSISTANCE FOR NEEDY FAMILIES (TANF)

TANF Regular And TANF Two-Parent Cash Assistance



TANF Cases and Recipients (TANF Regular and TANF Two-Parent)



Note:

All data July 2014 and following will be broken out according to the new DFR region structure effective July 1 2014.



DIVISION OF FAMILY RESOURCES

Monthly Management Report

Reporting Month: October 2017

Location: DeKalb County

SUPPLEMENTAL NUTRITION ASSISTANCE PROGRAM (SNAP)

	October 2017	September 2017	October 2016	Annual Change
Total issuance	\$315,623	\$323,011	\$354,710	-11.02%
Number of households receiving SNAP benefits	1,319	1,337	1,415	-6.78%
Number of recipients	2,998	3,024	3,284	-8.71%
Average issuance per household	\$239.29	\$241.59	\$250.68	-4.54%
Average issuance per recipient	\$105.28	\$106.82	\$108.01	-2.53%

Note:

All data July 2014 and following will be broken out according to the new DFR region structure effective July 1 2014.



DIVISION OF FAMILY RESOURCES

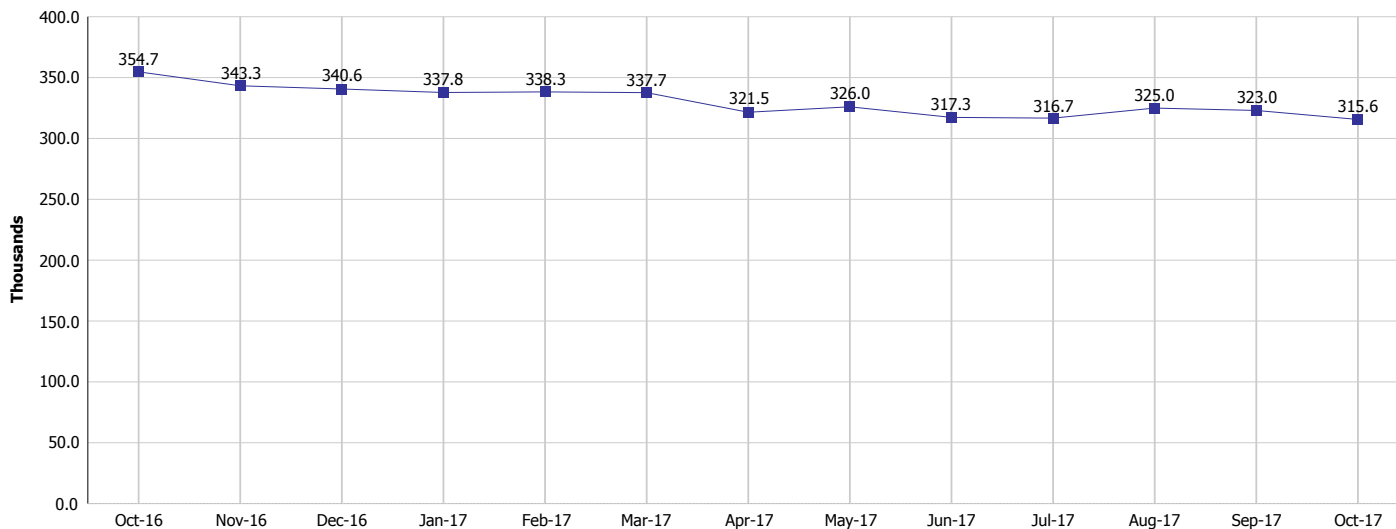
Monthly Management Report

Reporting Month: October 2017

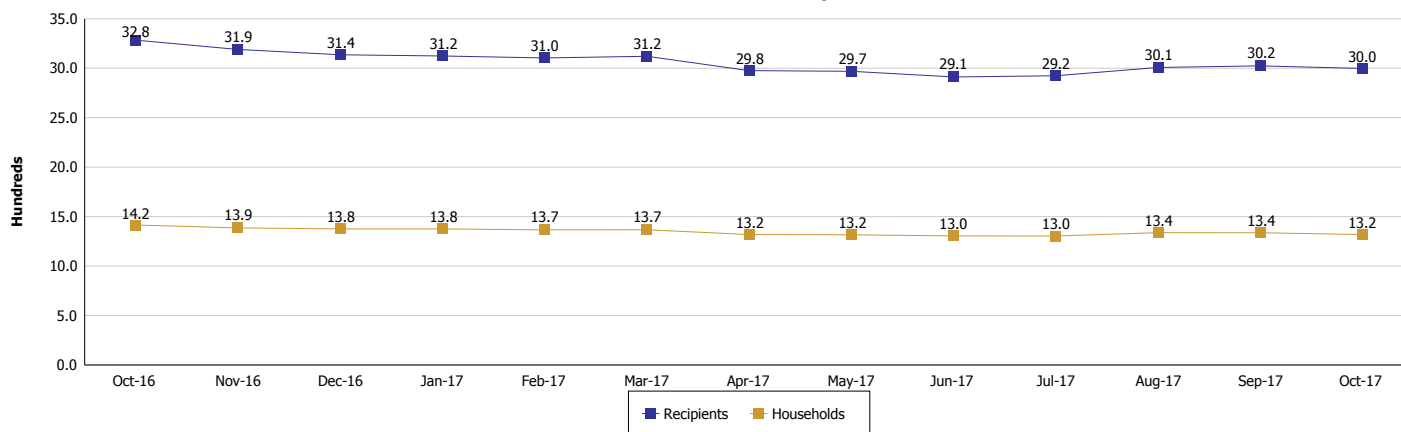
Location: DeKalb County

SUPPLEMENTAL NUTRITION ASSISTANCE PROGRAM (SNAP)

SNAP Issuance



SNAP Households and Recipients



Note:

All data July 2014 and following will be broken out according to the new DFR region structure effective July 1 2014.



DIVISION OF FAMILY RESOURCES

Monthly Management Report

Reporting Month: October 2017

Location: Dekalb County

HIP 2.0 and SNAP

	October 2017	September 2017	October 2016	Annual Change
Total HIP 2.0 Members	2,242	2,214	2,030	10.44%
HIP Members also SNAP Recipients	665	658	687	-3.20%
Percentage HIP Members SNAP Recipients	29.7%	29.7%	33.8%	6.62%
HIP Members SNAP ABAWDs	10	14	19	-47.37%
Percentage HIP Members SNAP ABAWDs	0.4%	0.6%	0.9%	6.62%

Note:

All data July 2014 and following will be broken out according to the new DFR region structure effective July 1 2014.



DIVISION OF FAMILY RESOURCES

Monthly Management Report

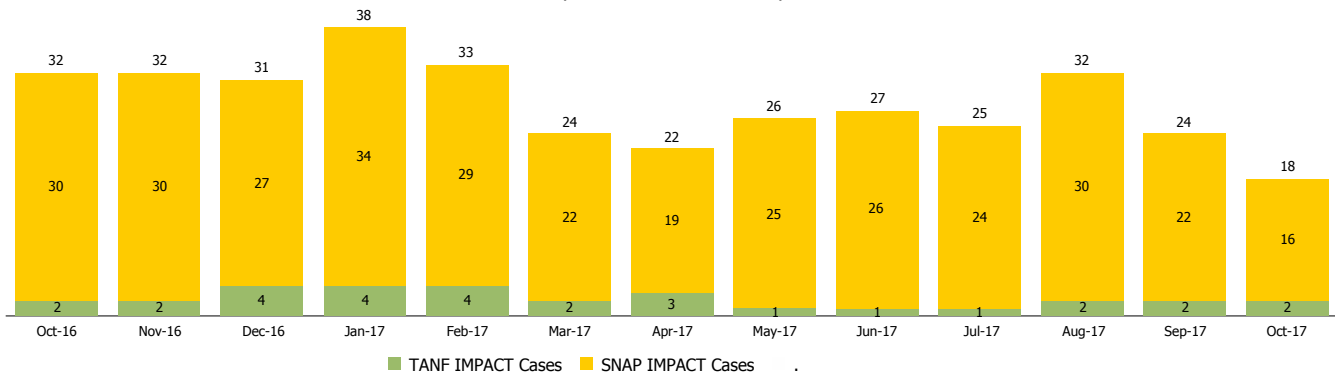
Reporting Month: October 2017

Location: Dekalb County

INDIANA MANPOWER PLACEMENT AND COMPREHENSIVE TRAINING (IMPACT)

	October 2017	September 2017	October 2016	Annual Change
Number of IMPACT cases	18	24	32	-43.75%
Number of TANF IMPACT adults	2	2	2	0.00%
Number of SNAP IMPACT Cases	16	22	30	-46.67%
Total number of adults employed	10	5	8	25.00%
Number of TANF IMPACT adults newly employed (within past 30 days)	0	1	0	
Number of SNAP IMPACT adults employed	10	4	8	25.00%
Total number of adults ineligible due to employment	29	22	27	7.41%
Number of TANF adults ineligible due to employment	0	0	0	
Number of SNAP adults ineligible due to employment	29	22	27	7.41%

IMPACT Caseloads
(SNAP, TANF, Total Caseload)



Note:

All data July 2014 and following will be broken out according to the new DFR region structure effective July 1 2014.