



## DIVISION OF FAMILY RESOURCES

# Dearborn County Monthly Management Report October 2017

### State of Indiana

Eric Holcomb  
Governor

### Family and Social Services Administration

Jennifer Walthall, M.D.  
Secretary

### Division of Family Resources

Adrienne Shields  
Director

For questions regarding data on this report contact:  
[office.Communications@fssa.IN.gov](mailto:office.Communications@fssa.IN.gov)



## State of Indiana

Published November 2017



## DIVISION OF FAMILY RESOURCES

### Monthly Management Report

Reporting Month: October 2017

Location: Dearborn County

#### TEMPORARY ASSISTANCE FOR NEEDY FAMILIES (TANF)

Child-Only and One-Parent Families	Oct 31, 2017	September 2017	October 2016	Annual Change
Number of families receiving TANF Grants	58	56	62	-6.45%
Total number of grant recipients	114	114	122	-6.56%
Number of adult grant recipients	9	10	16	-43.75%
Number of child grant recipients	105	104	106	-0.94%
Total payments	\$11,226	\$11,221	\$11,153	0.65%
Average payment per case	\$193.55	\$200.38	\$179.89	7.60%
Average payment per recipient	\$98.47	\$98.43	\$91.42	7.72%
Number of cases with benefits reduced to zero	1	1	1	0.00%
Number of recipients with benefits reduced to zero	3	3	4	-25.00%
Number of adult recipients with benefit reduced to zero	1	1	0	0%
Number of child recipients with benefit reduced to zero	2	2	4	-50.00%

Two-Parent Families	Oct 31, 2017	September 2017	October 2016	Annual Change
Number of families receiving TANF Grants	0	0	2	-100.00%
Total number of grant recipients	0	0	9	-100.00%
Number of adult grant recipients	0	0	4	-100.00%
Number of child grant recipients	0	0	5	-100.00%
Total payments	\$0	\$0	\$751	-100.00%
Average payment per case	\$0.00	\$0.00	\$375.50	-100.00%
Average payment per recipient	\$0.00	\$0.00	\$83.44	-100.00%
Number of cases with benefits reduced to zero	0	0	0	0%
Number of recipients with benefits reduced to zero	0	0	0	0%
Number of adult recipients with benefit reduced to zero	0	0	0	0%
Number of child recipients with benefit reduced to zero	0	0	0	0%

**Note:**

All data July 2014 and following will be broken out according to the new DFR region structure effective July 1 2014.

Source:



# DIVISION OF FAMILY RESOURCES

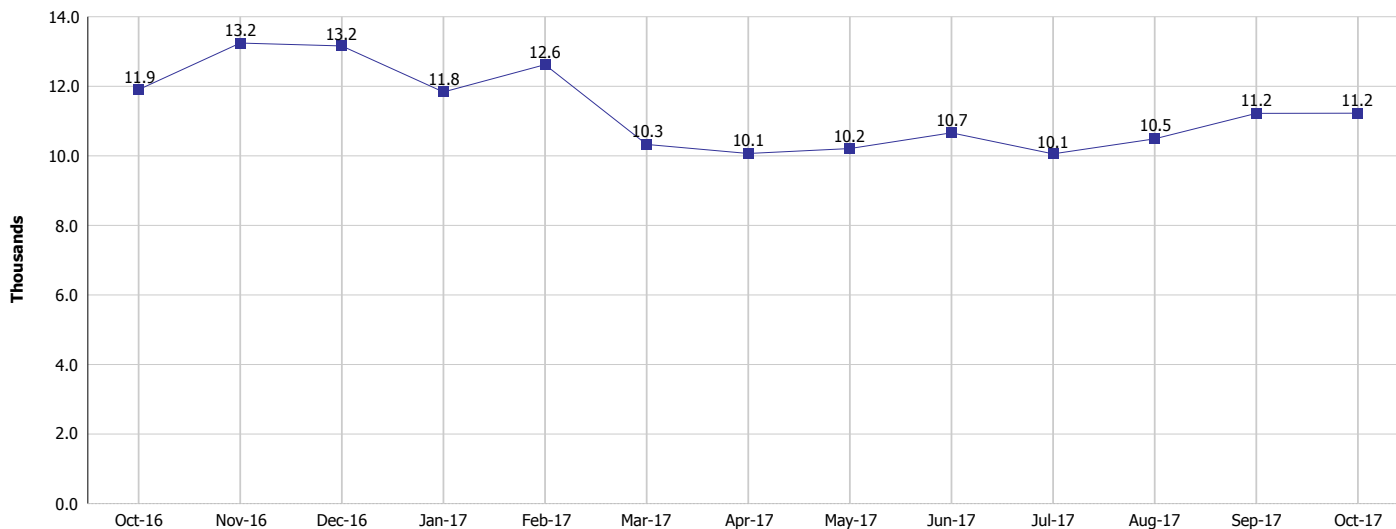
## Monthly Management Report

Reporting Month: October 2017

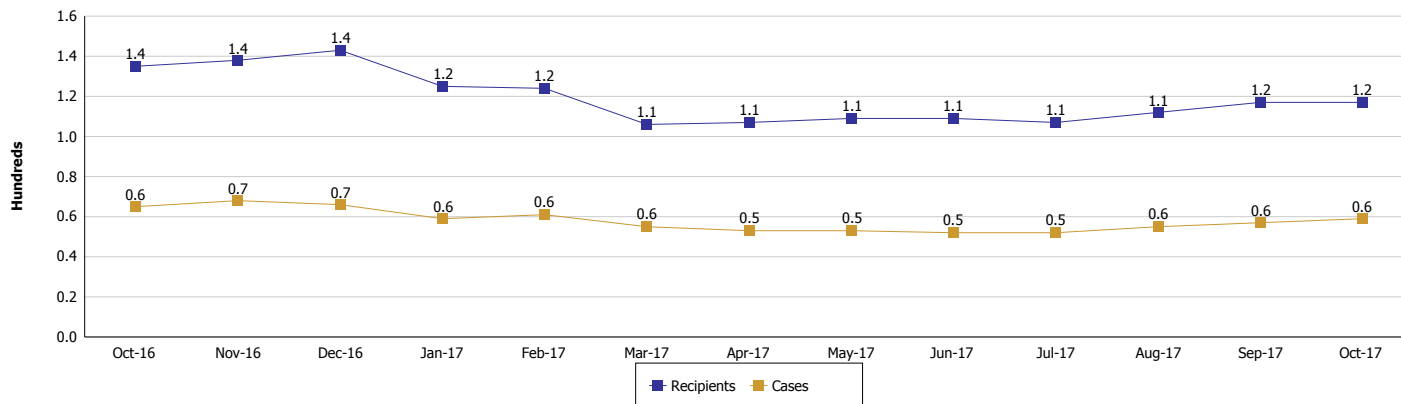
Location: Dearborn County

### TEMPORARY ASSISTANCE FOR NEEDY FAMILIES (TANF)

#### TANF Regular And TANF Two-Parent Cash Assistance



#### TANF Cases and Recipients (TANF Regular and TANF Two-Parent)



**Note:**

All data July 2014 and following will be broken out according to the new DFR region structure effective July 1 2014.



## DIVISION OF FAMILY RESOURCES

### Monthly Management Report

Reporting Month: October 2017

Location: Dearborn County

#### SUPPLEMENTAL NUTRITION ASSISTANCE PROGRAM (SNAP)

	October 2017	September 2017	October 2016	Annual Change
Total issuance	\$389,719	\$398,994	\$442,564	-11.94%
Number of households receiving SNAP benefits	1,504	1,531	1,706	-11.84%
Number of recipients	3,290	3,358	3,795	-13.31%
Average issuance per household	\$259.12	\$260.61	\$259.42	-0.12%
Average issuance per recipient	\$118.46	\$118.82	\$116.62	1.58%

**Note:**

All data July 2014 and following will be broken out according to the new DFR region structure effective July 1 2014.



# DIVISION OF FAMILY RESOURCES

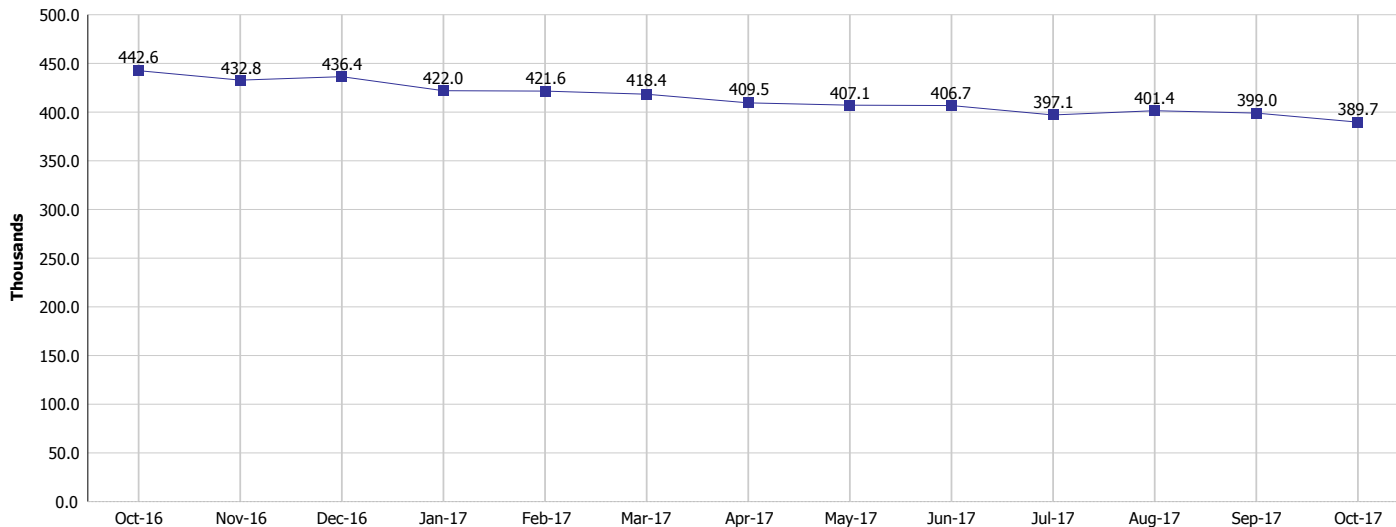
## Monthly Management Report

Reporting Month: October 2017

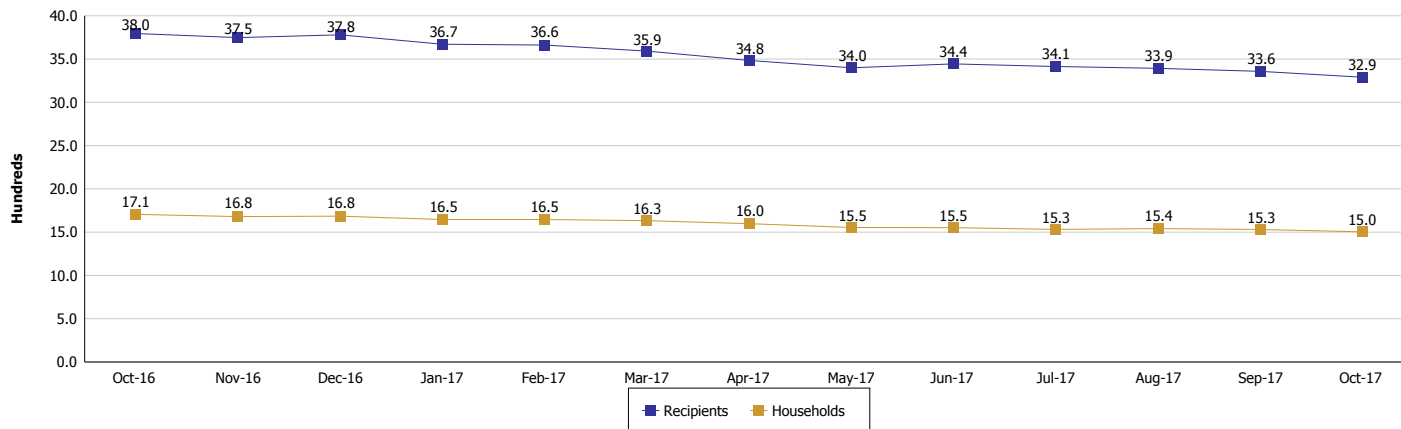
Location: Dearborn County

### SUPPLEMENTAL NUTRITION ASSISTANCE PROGRAM (SNAP)

#### SNAP Issuance



#### SNAP Households and Recipients



#### Note:

All data July 2014 and following will be broken out according to the new DFR region structure effective July 1 2014.



## DIVISION OF FAMILY RESOURCES

### Monthly Management Report

Reporting Month: October 2017

Location: Dearborn County

#### HIP 2.0 and SNAP

	October 2017	September 2017	October 2016	Annual Change
Total HIP 2.0 Members	2,519	2,488	2,373	6.15%
HIP Members also SNAP Recipients	815	832	936	-12.93%
Percentage HIP Members SNAP Recipients	32.4%	33.4%	39.4%	0.66%
HIP Members SNAP ABAWDs	38	34	41	-7.32%
Percentage HIP Members SNAP ABAWDs	1.5%	1.4%	1.7%	0.66%

**Note:**

All data July 2014 and following will be broken out according to the new DFR region structure effective July 1 2014.



## DIVISION OF FAMILY RESOURCES

### Monthly Management Report

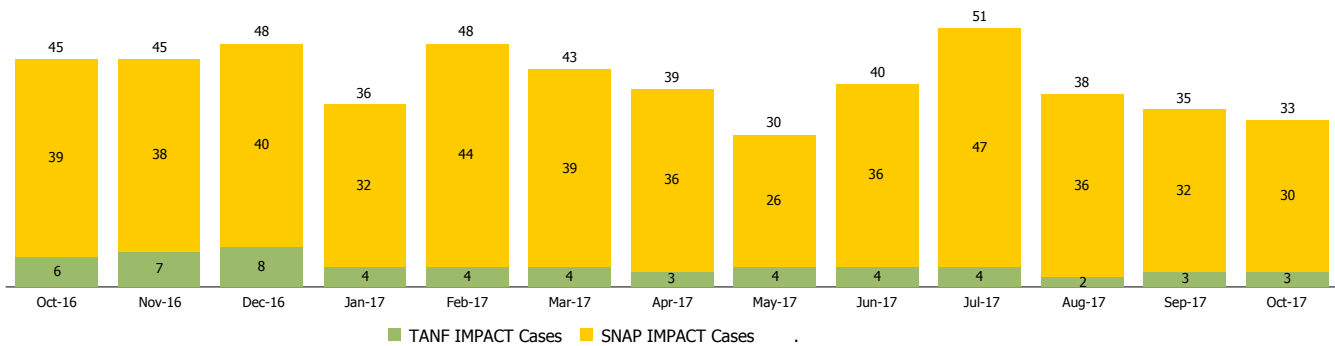
Reporting Month: October 2017

Location: Dearborn County

#### INDIANA MANPOWER PLACEMENT AND COMPREHENSIVE TRAINING (IMPACT)

	October 2017	September 2017	October 2016	Annual Change
Number of IMPACT cases	33	35	45	-26.67%
Number of TANF IMPACT adults	3	3	6	-50.00%
Number of SNAP IMPACT Cases	30	32	39	-23.08%
Total number of adults employed	16	6	6	166.67%
Number of TANF IMPACT adults newly employed (within past 30 days)	0	0	1	-100.00%
Number of SNAP IMPACT adults employed	16	6	5	220.00%
Total number of adults ineligible due to employment	31	29	29	6.90%
Number of TANF adults ineligible due to employment	1	0	0	
Number of SNAP adults ineligible due to employment	30	29	29	3.45%

**IMPACT Caseloads**  
(SNAP, TANF, Total Caseload)



**Note:**

All data July 2014 and following will be broken out according to the new DFR region structure effective July 1 2014.