



## DIVISION OF FAMILY RESOURCES

# Crawford County Monthly Management Report April 2017

### State of Indiana

Eric Holcomb  
Governor

### Family and Social Services Administration

Jennifer Walthall, M.D.  
Secretary

### Division of Family Resources

Adrienne Shields  
Director

For questions regarding data on this report contact:  
[office.Communications@fssa.IN.gov](mailto:office.Communications@fssa.IN.gov)



## State of Indiana

Published May 2017



## DIVISION OF FAMILY RESOURCES

### Monthly Management Report

Reporting Month: April 2017

Location: Crawford County

#### TEMPORARY ASSISTANCE FOR NEEDY FAMILIES (TANF)

Child-Only and One-Parent Families	Apr 30, 2017	March 2017	April 2016	Annual Change
Number of families receiving TANF Grants	11	10	11	0.00%
Total number of grant recipients	22	18	22	0.00%
Number of adult grant recipients	5	4	3	66.67%
Number of child grant recipients	17	14	19	-10.53%
Total payments	\$2,154	\$1,462	\$1,676	28.52%
Average payment per case	\$195.82	\$146.20	\$152.36	28.52%
Average payment per recipient	\$97.91	\$81.22	\$76.18	28.52%
Number of cases with benefits reduced to zero	0	0	1	-100.00%
Number of recipients with benefits reduced to zero	0	0	1	-100.00%
Number of adult recipients with benefit reduced to zero	0	0	0	0%
Number of child recipients with benefit reduced to zero	0	0	1	-100.00%

Two-Parent Families	Apr 30, 2017	March 2017	April 2016	Annual Change
Number of families receiving TANF Grants	0	0	3	-100.00%
Total number of grant recipients	0	0	9	-100.00%
Number of adult grant recipients	0	0	2	-100.00%
Number of child grant recipients	0	0	7	-100.00%
Total payments	\$0	\$0	\$742	-100.00%
Average payment per case	\$0.00	\$0.00	\$247.33	-100.00%
Average payment per recipient	\$0.00	\$0.00	\$82.44	-100.00%
Number of cases with benefits reduced to zero	0	0	0	0%
Number of recipients with benefits reduced to zero	0	0	0	0%
Number of adult recipients with benefit reduced to zero	0	0	0	0%
Number of child recipients with benefit reduced to zero	0	0	0	0%

**Note:**

All data July 2014 and following will be broken out according to the new DFR region structure effective July 1 2014.

Source:



## DIVISION OF FAMILY RESOURCES

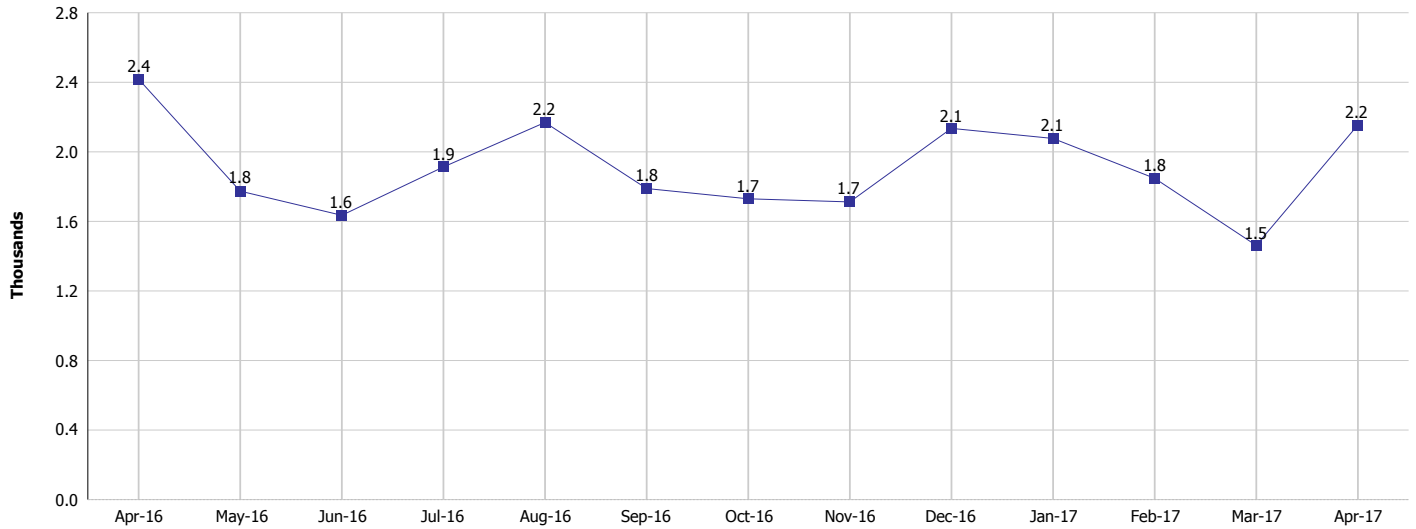
### Monthly Management Report

Reporting Month: April 2017

Location: Crawford County

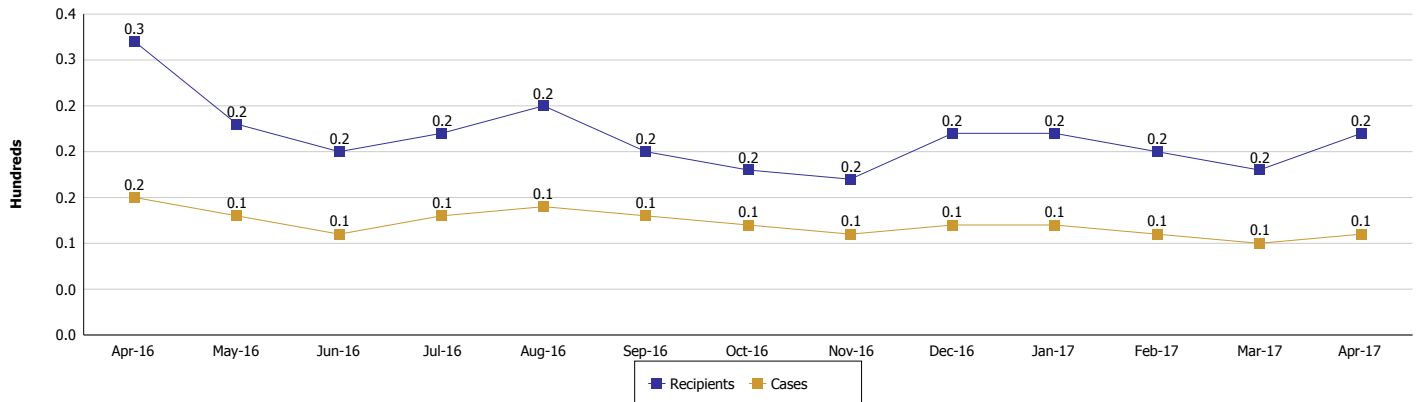
#### TEMPORARY ASSISTANCE FOR NEEDY FAMILIES (TANF)

#### TANF Regular And TANF Two-Parent Cash Assistance



#### TANF Cases and Recipients

(TANF Regular and TANF Two-Parent)



#### Note:

All data July 2014 and following will be broken out according to the new DFR region structure effective July 1 2014.



## DIVISION OF FAMILY RESOURCES

### Monthly Management Report

Reporting Month: April 2017

Location: Crawford County

#### SUPPLEMENTAL NUTRITION ASSISTANCE PROGRAM (SNAP)

	April 2017	March 2017	April 2016	Annual Change
Total issuance	\$132,849	\$142,412	\$140,187	-5.23%
Number of households receiving SNAP benefits	563	585	587	-4.09%
Number of recipients	1,246	1,319	1,316	-5.32%
Average issuance per household	\$235.97	\$243.44	\$238.82	-1.19%
Average issuance per recipient	\$106.62	\$107.97	\$106.53	0.08%

**Note:**

All data July 2014 and following will be broken out according to the new DFR region structure effective July 1 2014.



## DIVISION OF FAMILY RESOURCES

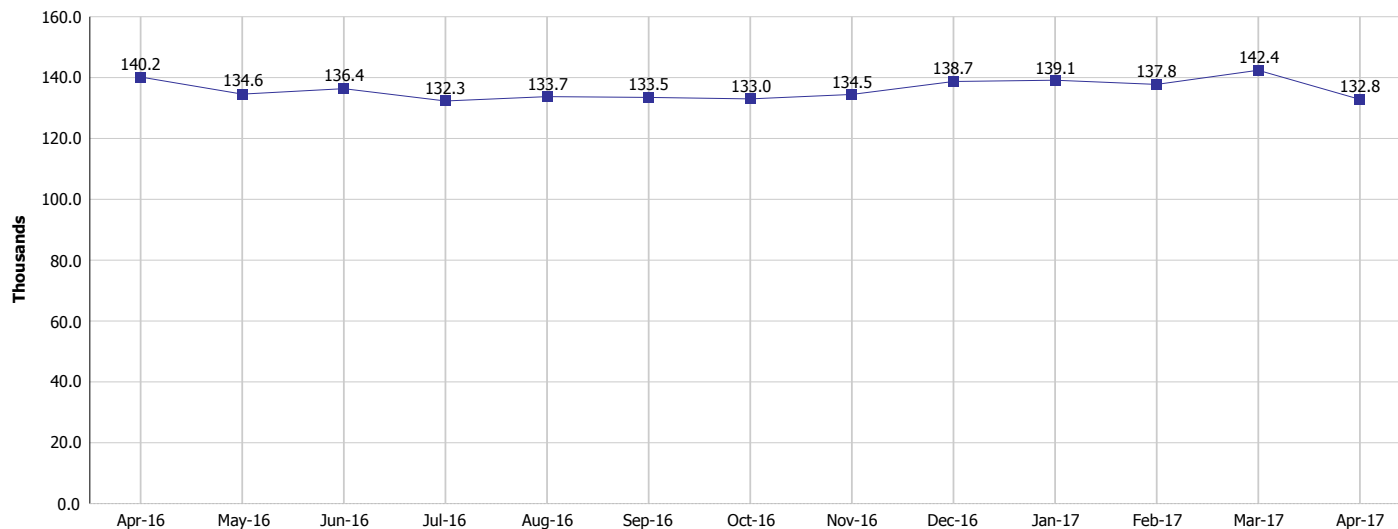
### Monthly Management Report

Reporting Month: April 2017

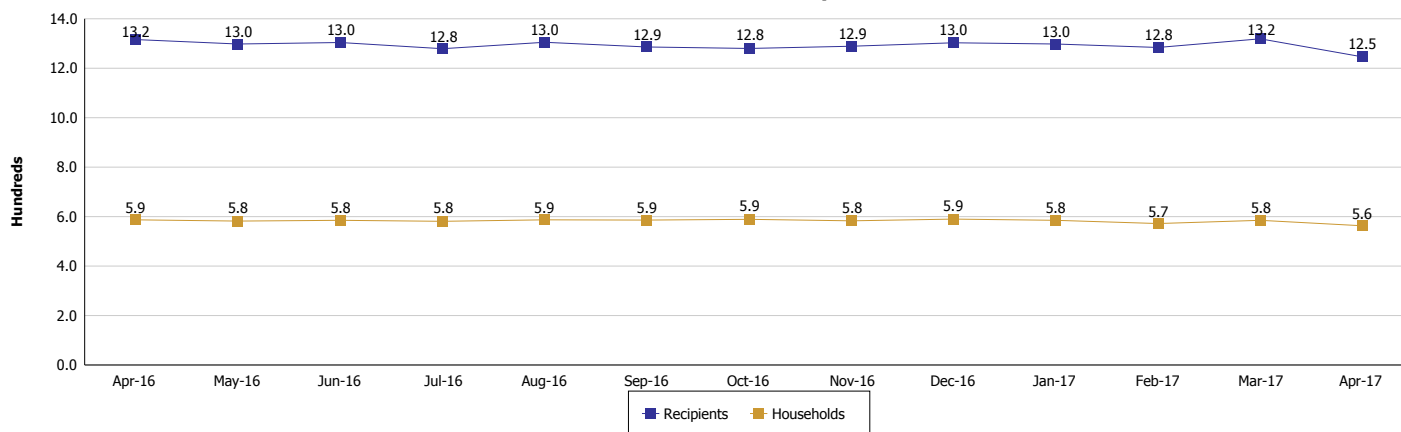
Location: Crawford County

#### SUPPLEMENTAL NUTRITION ASSISTANCE PROGRAM (SNAP)

#### SNAP Issuance



#### SNAP Households and Recipients



#### Note:

All data July 2014 and following will be broken out according to the new DFR region structure effective July 1 2014.



## DIVISION OF FAMILY RESOURCES

### Monthly Management Report

Reporting Month: April 2017

Location: Crawford County

#### HIP 2.0 and SNAP

	April 2017	March 2017	April 2016	Annual Change
Total HIP 2.0 Members	858	872	770	11.43%
HIP Members also SNAP Recipients	302	329	311	-2.89%
Percentage HIP Members SNAP Recipients	35.2%	37.7%	40.4%	6.98%
HIP Members SNAP ABAWDs	5	8	8	-37.50%
Percentage HIP Members SNAP ABAWDs	0.6%	0.9%	1.0%	6.98%

**Note:**

All data July 2014 and following will be broken out according to the new DFR region structure effective July 1 2014.



## DIVISION OF FAMILY RESOURCES

### Monthly Management Report

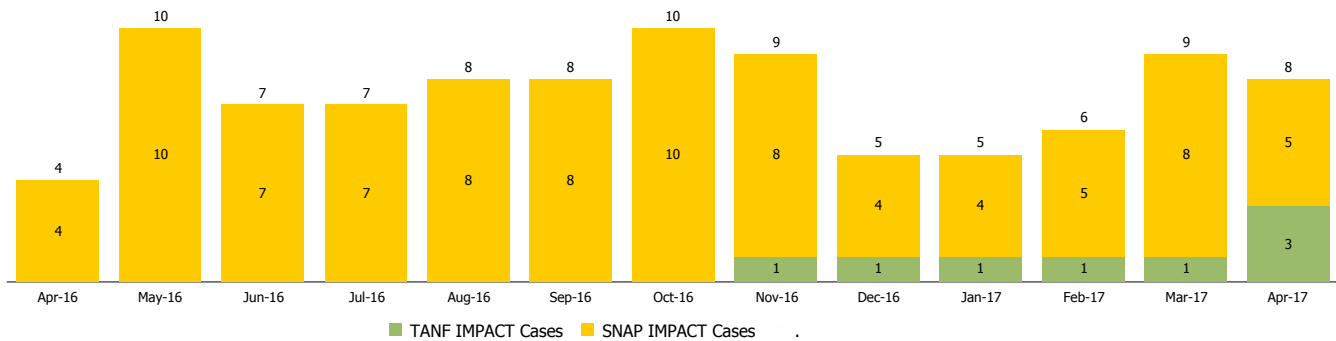
Reporting Month: April 2017

Location: Crawford County

#### INDIANA MANPOWER PLACEMENT AND COMPREHENSIVE TRAINING (IMPACT)

	April 2017	March 2017	April 2016	Annual Change
Number of IMPACT cases	8	9	4	100.00%
Number of TANF IMPACT adults	3	1	0	
Number of SNAP IMPACT Cases	5	8	4	25.00%
Total number of adults employed	6	1	1	500.00%
Number of TANF IMPACT adults newly employed (within past 30 days)	0	0	0	
Number of SNAP IMPACT adults employed	6	1	1	500.00%
Total number of adults ineligible due to employment	11	2	8	37.50%
Number of TANF adults ineligible due to employment	0	0	0	
Number of SNAP adults ineligible due to employment	11	2	8	37.50%

**IMPACT Caseloads**  
(SNAP, TANF, Total Caseload)



**Note:**

All data July 2014 and following will be broken out according to the new DFR region structure effective July 1 2014.