



## DIVISION OF FAMILY RESOURCES

# Cass County Monthly Management Report June 2017

### State of Indiana

Eric Holcomb  
Governor

### Family and Social Services Administration

Jennifer Walthall, M.D.  
Secretary

### Division of Family Resources

Adrienne Shields  
Director

For questions regarding data on this report contact:  
[office.Communications@fssa.IN.gov](mailto:office.Communications@fssa.IN.gov)



## State of Indiana

Published July 2017



## DIVISION OF FAMILY RESOURCES

### Monthly Management Report

Reporting Month: June 2017

Location: Cass County

#### TEMPORARY ASSISTANCE FOR NEEDY FAMILIES (TANF)

Child-Only and One-Parent Families	Jun 30, 2017	May 2017	June 2016	Annual Change
Number of families receiving TANF Grants	36	37	49	-26.53%
Total number of grant recipients	78	72	114	-31.58%
Number of adult grant recipients	11	10	18	-38.89%
Number of child grant recipients	67	62	96	-30.21%
Total payments	\$6,894	\$6,403	\$9,597	-28.17%
Average payment per case	\$191.50	\$173.05	\$195.86	-2.22%
Average payment per recipient	\$88.38	\$88.93	\$84.18	4.99%
Number of cases with benefits reduced to zero	0	0	0	0%
Number of recipients with benefits reduced to zero	0	0	0	0%
Number of adult recipients with benefit reduced to zero	0	0	0	0%
Number of child recipients with benefit reduced to zero	0	0	0	0%

Two-Parent Families	Jun 30, 2017	May 2017	June 2016	Annual Change
Number of families receiving TANF Grants	5	5	8	-37.50%
Total number of grant recipients	21	21	35	-40.00%
Number of adult grant recipients	10	10	16	-37.50%
Number of child grant recipients	11	11	19	-42.11%
Total payments	\$789	\$789	\$1,342	-41.21%
Average payment per case	\$157.80	\$157.80	\$167.75	-5.93%
Average payment per recipient	\$37.57	\$37.57	\$38.34	-2.01%
Number of cases with benefits reduced to zero	0	0	0	0%
Number of recipients with benefits reduced to zero	0	0	0	0%
Number of adult recipients with benefit reduced to zero	0	0	0	0%
Number of child recipients with benefit reduced to zero	0	0	0	0%

**Note:**

All data July 2014 and following will be broken out according to the new DFR region structure effective July 1 2014.

Source:



## DIVISION OF FAMILY RESOURCES

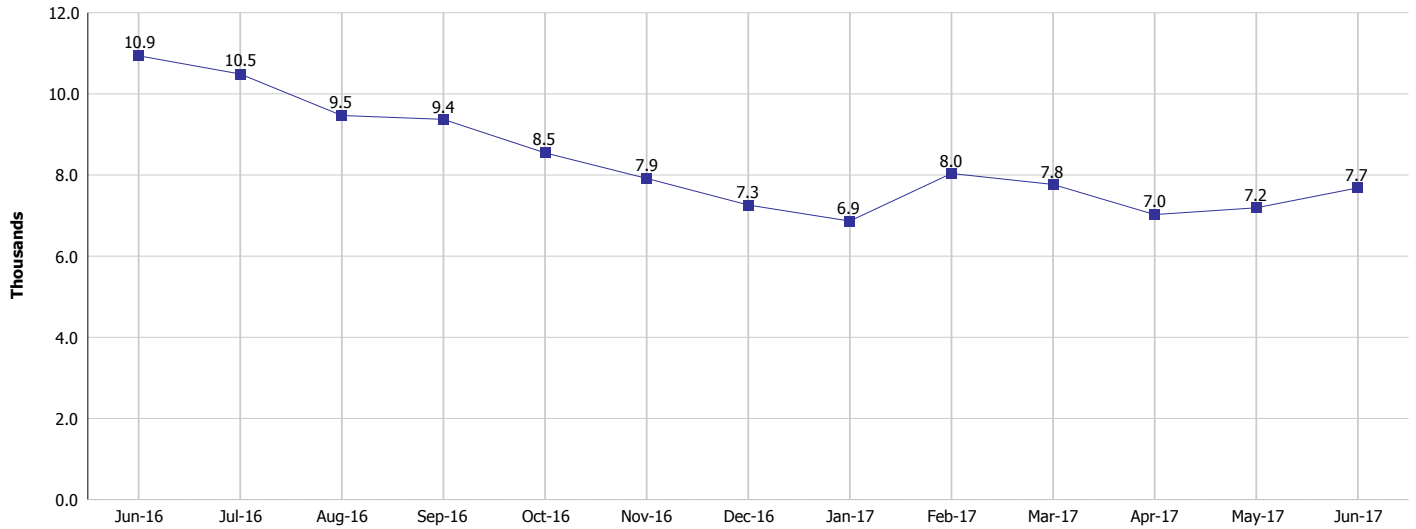
### Monthly Management Report

Reporting Month: June 2017

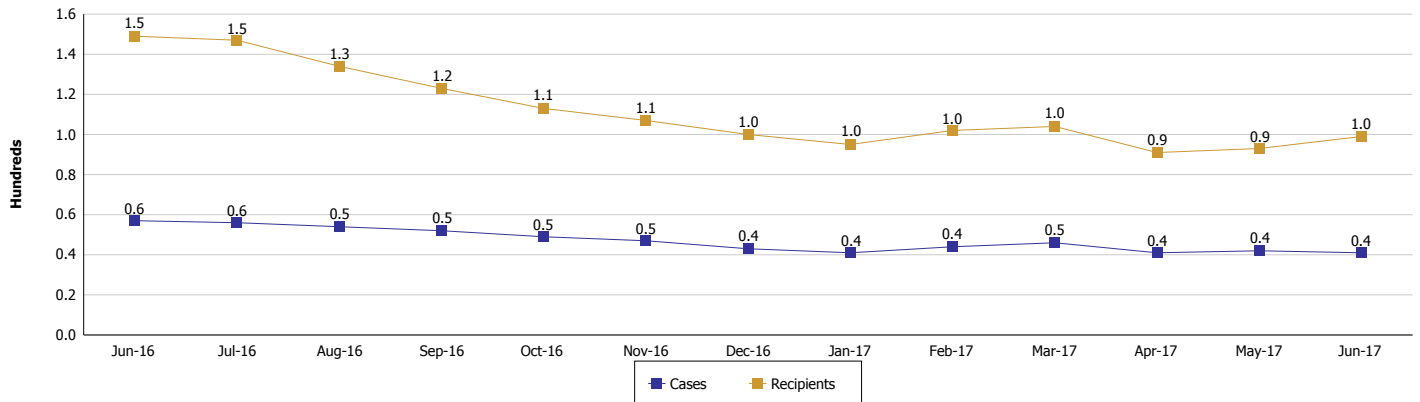
Location: Cass County

#### TEMPORARY ASSISTANCE FOR NEEDY FAMILIES (TANF)

#### TANF Regular And TANF Two-Parent Cash Assistance



#### TANF Cases and Recipients (TANF Regular and TANF Two-Parent)



**Note:**

All data July 2014 and following will be broken out according to the new DFR region structure effective July 1 2014.



## DIVISION OF FAMILY RESOURCES

### Monthly Management Report

Reporting Month: June 2017

Location: Cass County

#### SUPPLEMENTAL NUTRITION ASSISTANCE PROGRAM (SNAP)

	June 2017	May 2017	June 2016	Annual Change
Total issuance	\$454,207	\$468,485	\$503,052	-9.71%
Number of households receiving SNAP benefits	1,736	1,781	1,951	-11.02%
Number of recipients	4,014	4,113	4,427	-9.33%
Average issuance per household	\$261.64	\$263.05	\$257.84	1.47%
Average issuance per recipient	\$113.16	\$113.9	\$113.63	-0.41%

**Note:**

All data July 2014 and following will be broken out according to the new DFR region structure effective July 1 2014.



## DIVISION OF FAMILY RESOURCES

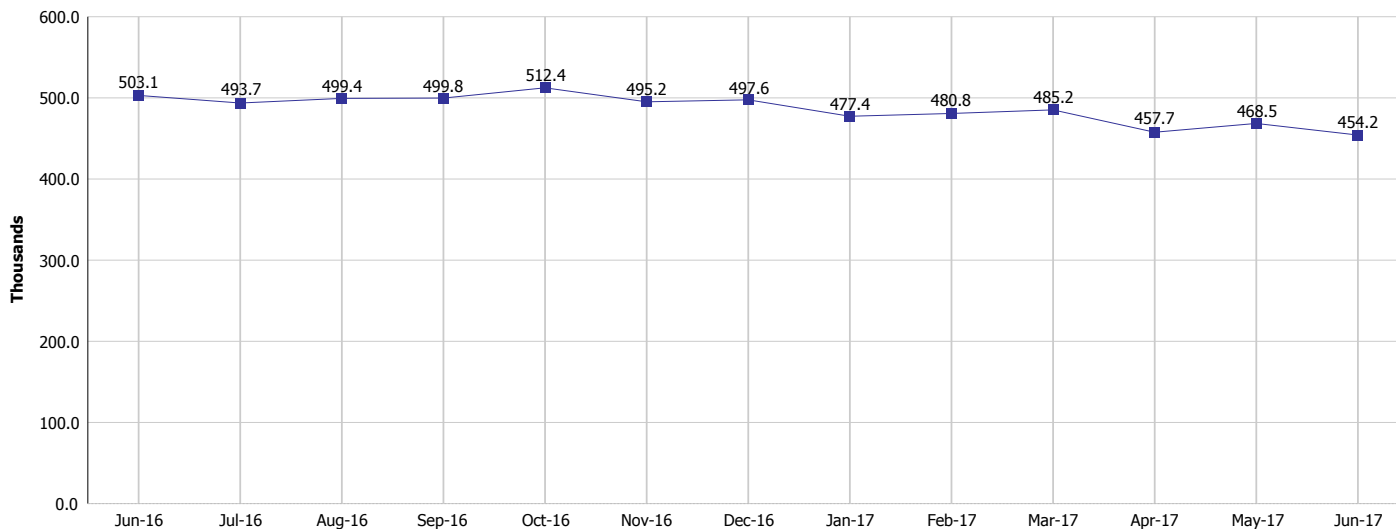
### Monthly Management Report

Reporting Month: June 2017

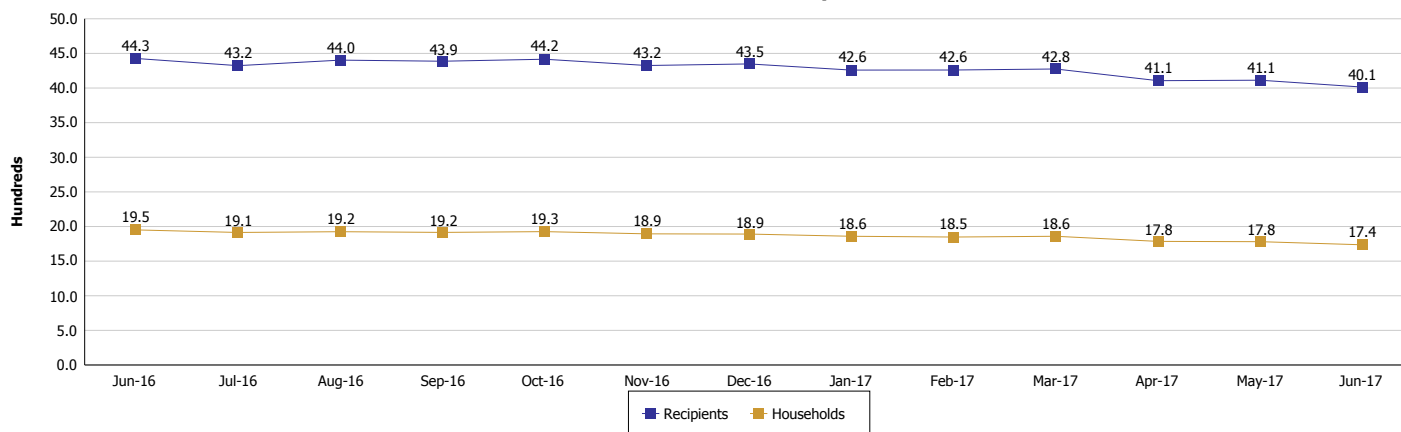
Location: Cass County

#### SUPPLEMENTAL NUTRITION ASSISTANCE PROGRAM (SNAP)

**SNAP Issuance**



**SNAP Households and Recipients**



**Note:**

All data July 2014 and following will be broken out according to the new DFR region structure effective July 1 2014.



## DIVISION OF FAMILY RESOURCES

### Monthly Management Report

Reporting Month: June 2017

Location: Cass County

#### HIP 2.0 and SNAP

	June 2017	May 2017	June 2016	Annual Change
Total HIP 2.0 Members	2,589	2,585	2,415	7.20%
HIP Members also SNAP Recipients	840	849	922	-8.89%
Percentage HIP Members SNAP Recipients	32.4%	32.8%	38.2%	2.19%
HIP Members SNAP ABAWDs	28	27	46	-39.13%
Percentage HIP Members SNAP ABAWDs	1.1%	1.0%	1.9%	2.19%

**Note:**

All data July 2014 and following will be broken out according to the new DFR region structure effective July 1 2014.



## DIVISION OF FAMILY RESOURCES

### Monthly Management Report

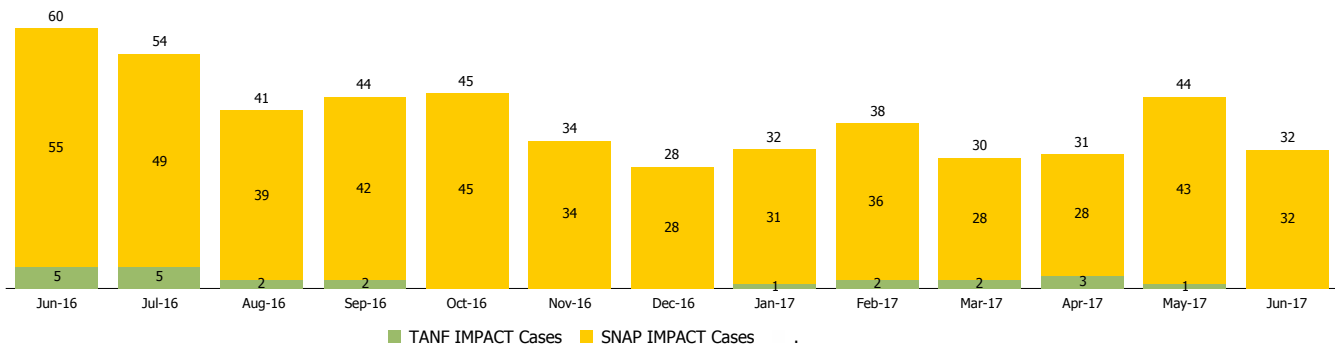
Reporting Month: June 2017

Location: Cass County

#### INDIANA MANPOWER PLACEMENT AND COMPREHENSIVE TRAINING (IMPACT)

	June 2017	May 2017	June 2016	Annual Change
Number of IMPACT cases	32	44	60	-46.67%
Number of TANF IMPACT adults	0	1	5	-100.00%
Number of SNAP IMPACT Cases	32	43	55	-41.82%
Total number of adults employed	8	7	7	14.29%
Number of TANF IMPACT adults newly employed (within past 30 days)	0	0	0	
Number of SNAP IMPACT adults employed	8	7	7	14.29%
Total number of adults ineligible due to employment	35	41	36	-2.78%
Number of TANF adults ineligible due to employment	0	0	0	
Number of SNAP adults ineligible due to employment	35	41	36	-2.78%

**IMPACT Caseloads**  
(SNAP, TANF, Total Caseload)



**Note:**

All data July 2014 and following will be broken out according to the new DFR region structure effective July 1 2014.