



## DIVISION OF FAMILY RESOURCES

# Blackford County Monthly Management Report December 2017

### State of Indiana

Eric Holcomb  
Governor

### Family and Social Services Administration

Jennifer Walthall, M.D.  
Secretary

### Division of Family Resources

Adrienne Shields  
Director

For questions regarding data on this report contact:  
[office.Communications@fssa.IN.gov](mailto:office.Communications@fssa.IN.gov)



## State of Indiana

Published January 2018



## DIVISION OF FAMILY RESOURCES

### Monthly Management Report

Reporting Month: December 2017

Location: Blackford County

#### TEMPORARY ASSISTANCE FOR NEEDY FAMILIES (TANF)

Child-Only and One-Parent Families	Dec 31, 2017	November 2017	December 2016	Annual Change
Number of families receiving TANF Grants	12	14	22	-45.45%
Total number of grant recipients	26	32	43	-39.53%
Number of adult grant recipients	2	3	3	-33.33%
Number of child grant recipients	24	29	40	-40.00%
Total payments	\$2,461	\$2,968	\$3,521	-30.11%
Average payment per case	\$205.08	\$212.00	\$160.05	28.14%
Average payment per recipient	\$94.65	\$92.75	\$81.88	15.60%
Number of cases with benefits reduced to zero	1	1	0	0%
Number of recipients with benefits reduced to zero	1	1	0	0%
Number of adult recipients with benefit reduced to zero	0	0	0	0%
Number of child recipients with benefit reduced to zero	1	1	0	0%

Two-Parent Families	Dec 31, 2017	November 2017	December 2016	Annual Change
Number of families receiving TANF Grants	0	0	0	0%
Total number of grant recipients	0	0	0	0%
Number of adult grant recipients	0	0	0	0%
Number of child grant recipients	0	0	0	0%
Total payments	\$0	\$0	\$0	0%
Average payment per case	\$0.00	\$0.00	\$0.00	0.00%
Average payment per recipient	\$0.00	\$0.00	\$0.00	0.00%
Number of cases with benefits reduced to zero	0	0	0	0%
Number of recipients with benefits reduced to zero	0	0	0	0%
Number of adult recipients with benefit reduced to zero	0	0	0	0%
Number of child recipients with benefit reduced to zero	0	0	0	0%

**Note:**

All data July 2014 and following will be broken out according to the new DFR region structure effective July 1 2014.

Source:



# DIVISION OF FAMILY RESOURCES

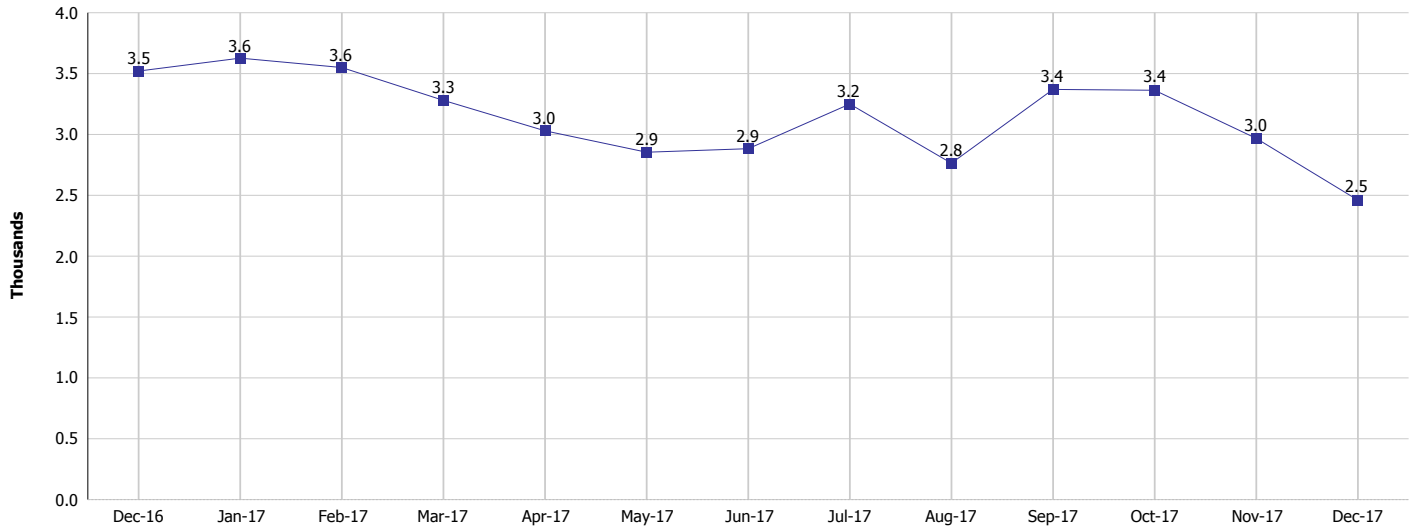
## Monthly Management Report

Reporting Month: December 2017

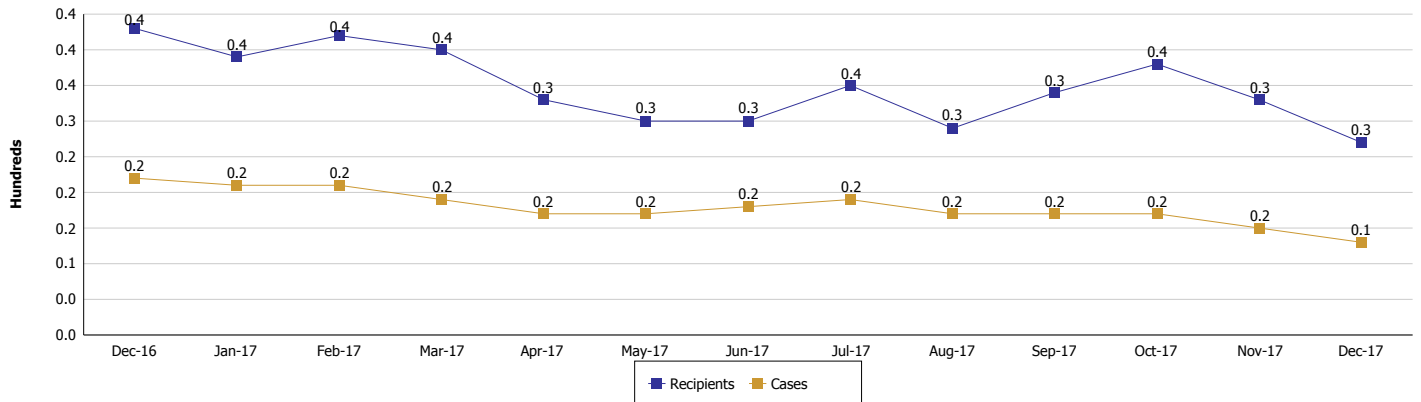
Location: Blackford County

### TEMPORARY ASSISTANCE FOR NEEDY FAMILIES (TANF)

#### TANF Regular And TANF Two-Parent Cash Assistance



#### TANF Cases and Recipients (TANF Regular and TANF Two-Parent)



**Note:**

All data July 2014 and following will be broken out according to the new DFR region structure effective July 1 2014.



## DIVISION OF FAMILY RESOURCES

### Monthly Management Report

Reporting Month: December 2017

Location: Blackford County

#### SUPPLEMENTAL NUTRITION ASSISTANCE PROGRAM (SNAP)

	December 2017	November 2017	December 2016	Annual Change
Total issuance	\$167,458	\$169,085	\$189,770	-11.76%
Number of households receiving SNAP benefits	707	699	764	-7.46%
Number of recipients	1,597	1,575	1,714	-6.83%
Average issuance per household	\$236.86	\$241.9	\$248.39	-4.64%
Average issuance per recipient	\$104.86	\$107.36	\$110.72	-5.29%

**Note:**

All data July 2014 and following will be broken out according to the new DFR region structure effective July 1 2014.



# DIVISION OF FAMILY RESOURCES

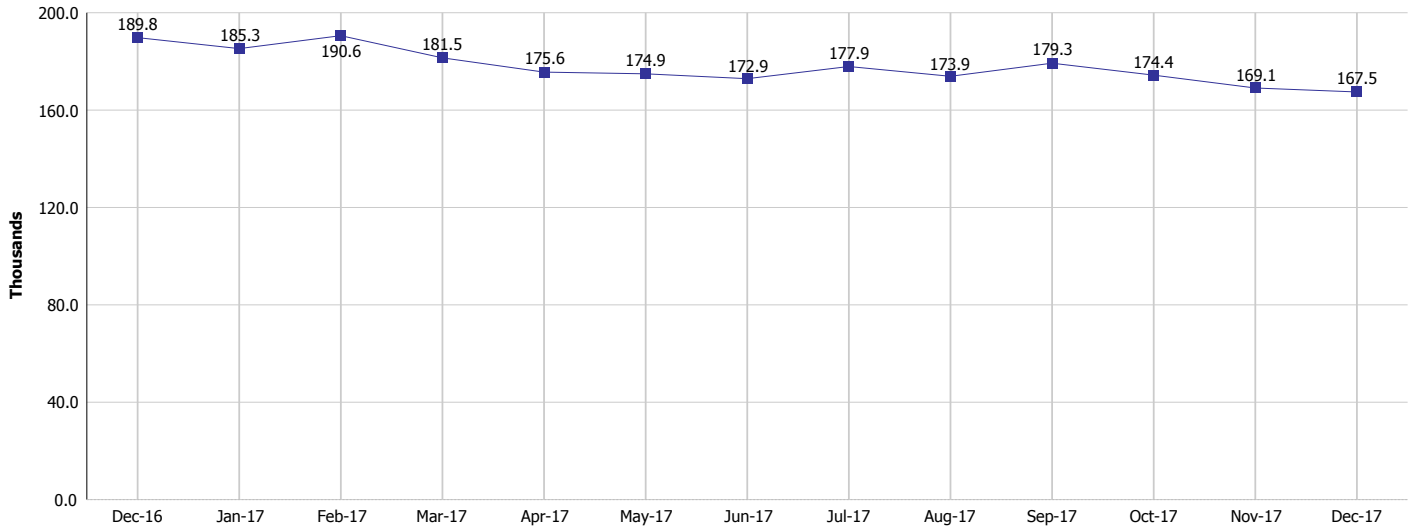
## Monthly Management Report

Reporting Month: December 2017

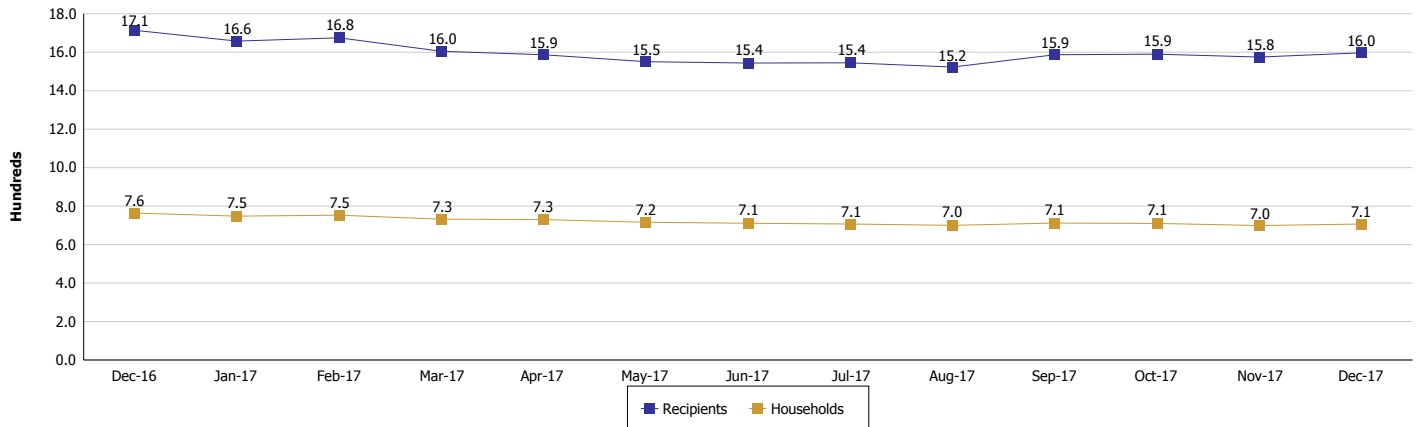
Location: Blackford County

### SUPPLEMENTAL NUTRITION ASSISTANCE PROGRAM (SNAP)

#### SNAP Issuance



#### SNAP Households and Recipients



#### Note:

All data July 2014 and following will be broken out according to the new DFR region structure effective July 1 2014.



## DIVISION OF FAMILY RESOURCES

### Monthly Management Report

Reporting Month: December 2017

Location: Blackford County

#### HIP 2.0 and SNAP

	December 2017	November 2017	December 2016	Annual Change
Total HIP 2.0 Members	1,025	1,032	1,048	-2.19%
HIP Members also SNAP Recipients	398	384	440	-9.55%
Percentage HIP Members SNAP Recipients	38.8%	37.2%	42.0%	-4.39%
HIP Members SNAP ABAWDs	13	4	14	-7.14%
Percentage HIP Members SNAP ABAWDs	1.3%	0.4%	1.3%	-4.39%

**Note:**

All data July 2014 and following will be broken out according to the new DFR region structure effective July 1 2014.



## DIVISION OF FAMILY RESOURCES

### Monthly Management Report

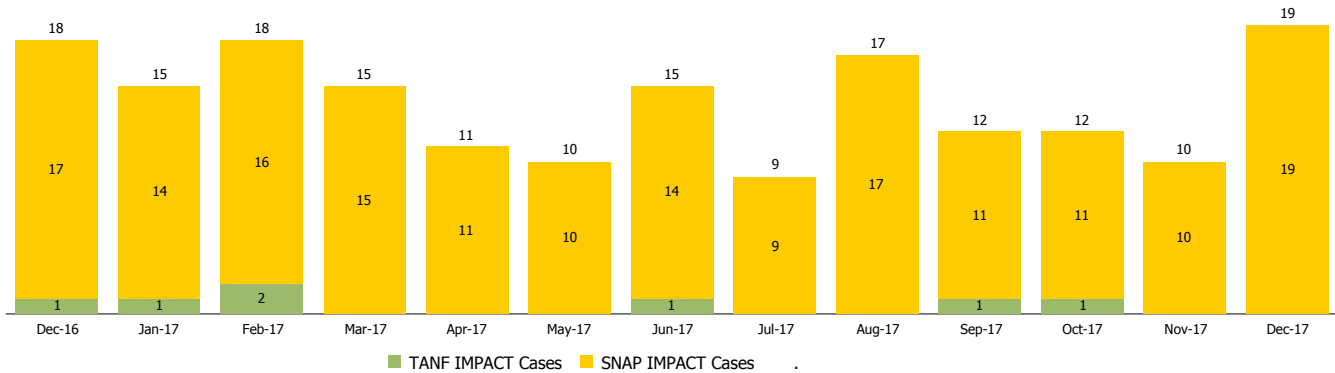
Reporting Month: December 2017

Location: Blackford County

#### INDIANA MANPOWER PLACEMENT AND COMPREHENSIVE TRAINING (IMPACT)

	December 2017	November 2017	December 2016	Annual Change
Number of IMPACT cases	19	10	18	5.56%
Number of TANF IMPACT adults	0	0	1	-100.00%
Number of SNAP IMPACT Cases	19	10	17	11.76%
Total number of adults employed	3	0	1	200.00%
Number of TANF IMPACT adults newly employed (within past 30 days)	0	0	0	
Number of SNAP IMPACT adults employed	3	0	1	200.00%
Total number of adults ineligible due to employment	17	11	14	21.43%
Number of TANF adults ineligible due to employment	0	0	0	
Number of SNAP adults ineligible due to employment	17	11	14	21.43%

**IMPACT Caseloads**  
(SNAP, TANF, Total Caseload)



**Note:**

All data July 2014 and following will be broken out according to the new DFR region structure effective July 1 2014.