



DIVISION OF FAMILY RESOURCES

Bartholomew County Monthly Management Report September 2017

State of Indiana

Eric Holcomb
Governor

Family and Social Services Administration

Jennifer Walthall, M.D.
Secretary

Division of Family Resources

Adrienne Shields
Director

For questions regarding data on this report contact:
office.Communications@fssa.IN.gov



State of Indiana

Published October 2017



DIVISION OF FAMILY RESOURCES

Monthly Management Report

Reporting Month: September 2017

Location: Bartholomew County

TEMPORARY ASSISTANCE FOR NEEDY FAMILIES (TANF)

Child-Only and One-Parent Families	Sep 30, 2017	August 2017	September 2016	Annual Change
Number of families receiving TANF Grants	79	73	92	-14.13%
Total number of grant recipients	171	151	173	-1.16%
Number of adult grant recipients	24	20	22	9.09%
Number of child grant recipients	147	131	151	-2.65%
Total payments	\$15,135	\$14,463	\$17,598	-14.00%
Average payment per case	\$191.58	\$198.12	\$191.28	0.16%
Average payment per recipient	\$88.51	\$95.78	\$101.72	-12.99%
Number of cases with benefits reduced to zero	2	3	1	100.00%
Number of recipients with benefits reduced to zero	3	5	2	50.00%
Number of adult recipients with benefit reduced to zero	0	1	0	0%
Number of child recipients with benefit reduced to zero	3	4	2	50.00%

Two-Parent Families	Sep 30, 2017	August 2017	September 2016	Annual Change
Number of families receiving TANF Grants	2	4	5	-60.00%
Total number of grant recipients	7	14	25	-72.00%
Number of adult grant recipients	2	5	8	-75.00%
Number of child grant recipients	5	9	17	-70.59%
Total payments	\$454	\$739	\$425	6.82%
Average payment per case	\$227.00	\$184.75	\$85.00	167.06%
Average payment per recipient	\$64.86	\$52.79	\$17.00	281.51%
Number of cases with benefits reduced to zero	0	0	1	-100.00%
Number of recipients with benefits reduced to zero	0	0	6	-100.00%
Number of adult recipients with benefit reduced to zero	0	0	2	-100.00%
Number of child recipients with benefit reduced to zero	0	0	4	-100.00%

Note:

All data July 2014 and following will be broken out according to the new DFR region structure effective July 1 2014.

Source:



DIVISION OF FAMILY RESOURCES

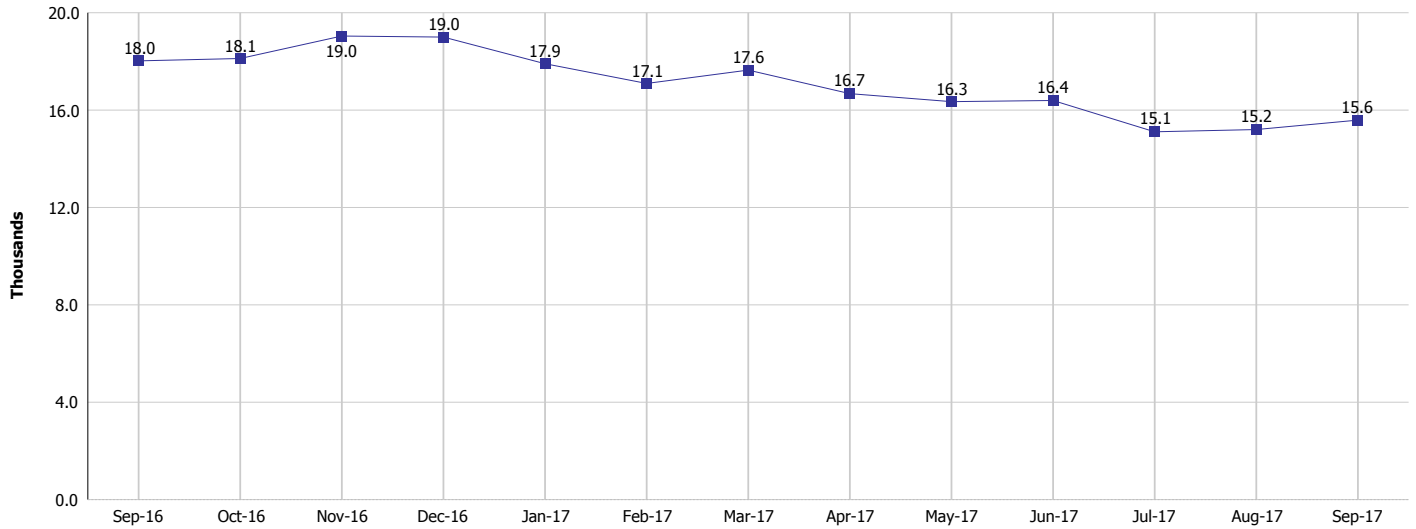
Monthly Management Report

Reporting Month: September 2017

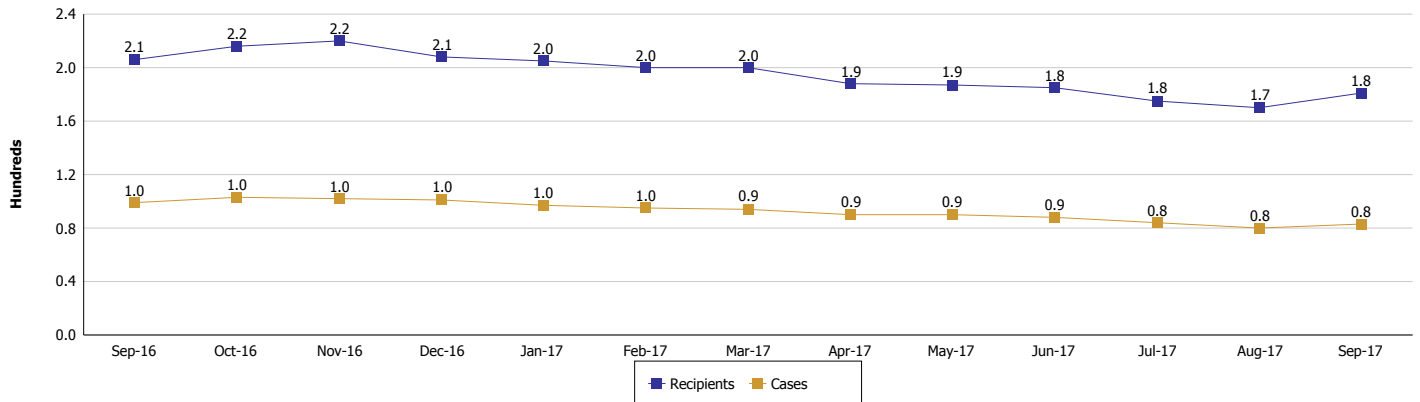
Location: Bartholomew County

TEMPORARY ASSISTANCE FOR NEEDY FAMILIES (TANF)

TANF Regular And TANF Two-Parent Cash Assistance



TANF Cases and Recipients (TANF Regular and TANF Two-Parent)



Note:

All data July 2014 and following will be broken out according to the new DFR region structure effective July 1 2014.



DIVISION OF FAMILY RESOURCES

Monthly Management Report

Reporting Month: September 2017

Location: Bartholomew County

SUPPLEMENTAL NUTRITION ASSISTANCE PROGRAM (SNAP)

	September 2017	August 2017	September 2016	Annual Change
Total issuance	\$702,900	\$707,851	\$755,672	-6.98%
Number of households receiving SNAP benefits	2,786	2,786	2,993	-6.92%
Number of recipients	6,072	6,063	6,578	-7.69%
Average issuance per household	\$252.3	\$254.07	\$252.48	-0.07%
Average issuance per recipient	\$115.76	\$116.75	\$114.88	0.77%

Note:

All data July 2014 and following will be broken out according to the new DFR region structure effective July 1 2014.



DIVISION OF FAMILY RESOURCES

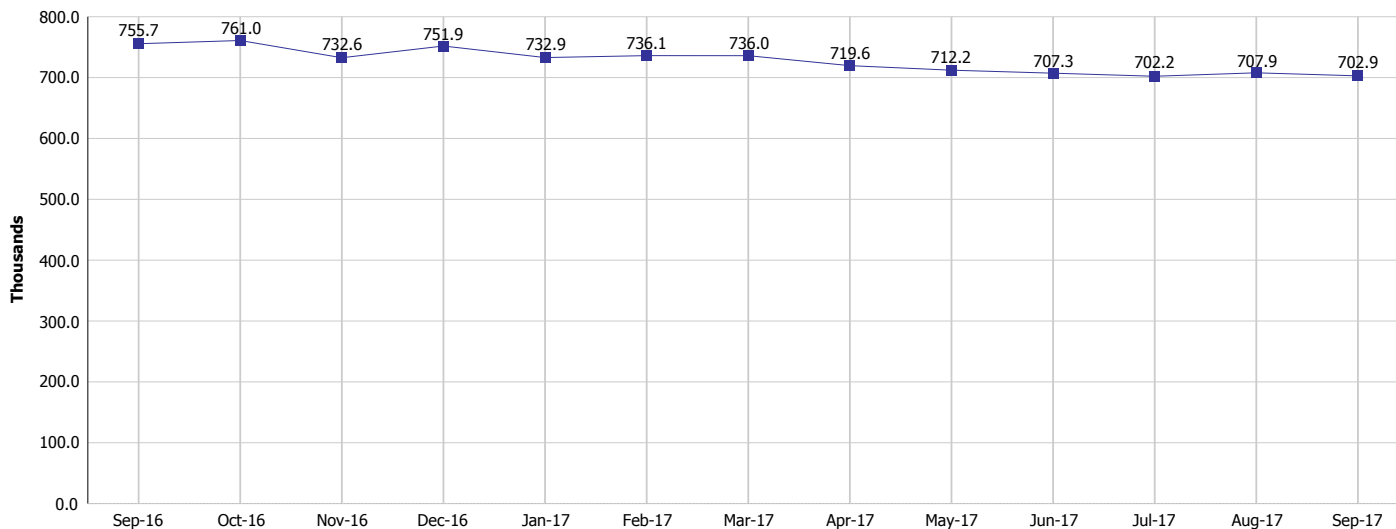
Monthly Management Report

Reporting Month: September 2017

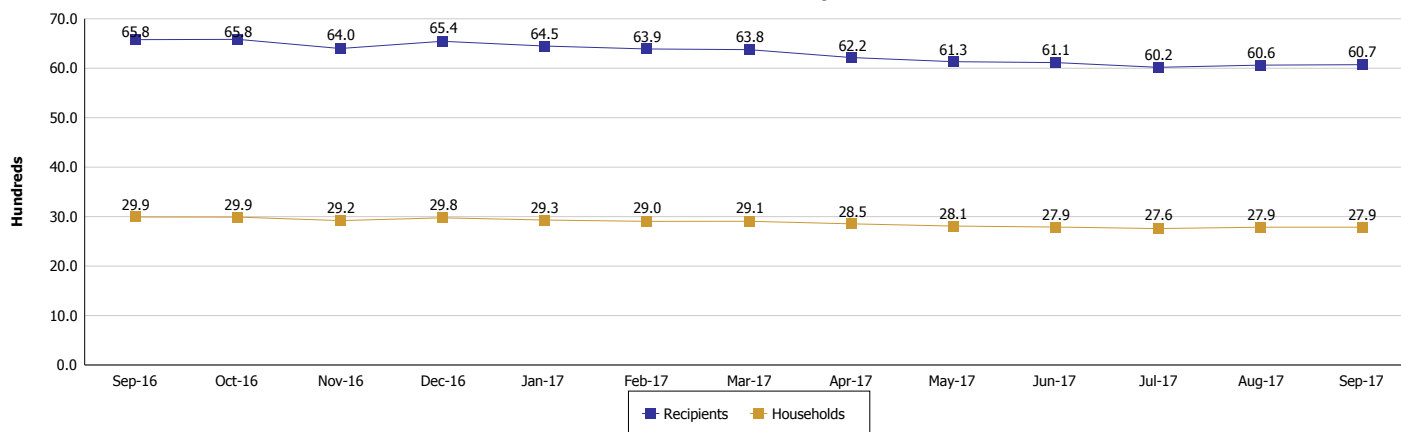
Location: Bartholomew County

SUPPLEMENTAL NUTRITION ASSISTANCE PROGRAM (SNAP)

SNAP Issuance



SNAP Households and Recipients



Note:

All data July 2014 and following will be broken out according to the new DFR region structure effective July 1 2014.



DIVISION OF FAMILY RESOURCES

Monthly Management Report

Reporting Month: September 2017

Location: Bartholomew County

HIP 2.0 and SNAP

	September 2017	August 2017	September 2016	Annual Change
Total HIP 2.0 Members	4,114	4,084	3,588	14.66%
HIP Members also SNAP Recipients	1,328	1,327	1,383	-3.98%
Percentage HIP Members SNAP Recipients	32.3%	32.5%	38.5%	9.39%
HIP Members SNAP ABAWDs	33	35	34	-2.94%
Percentage HIP Members SNAP ABAWDs	0.8%	0.9%	0.9%	9.39%

Note:

All data July 2014 and following will be broken out according to the new DFR region structure effective July 1 2014.



DIVISION OF FAMILY RESOURCES

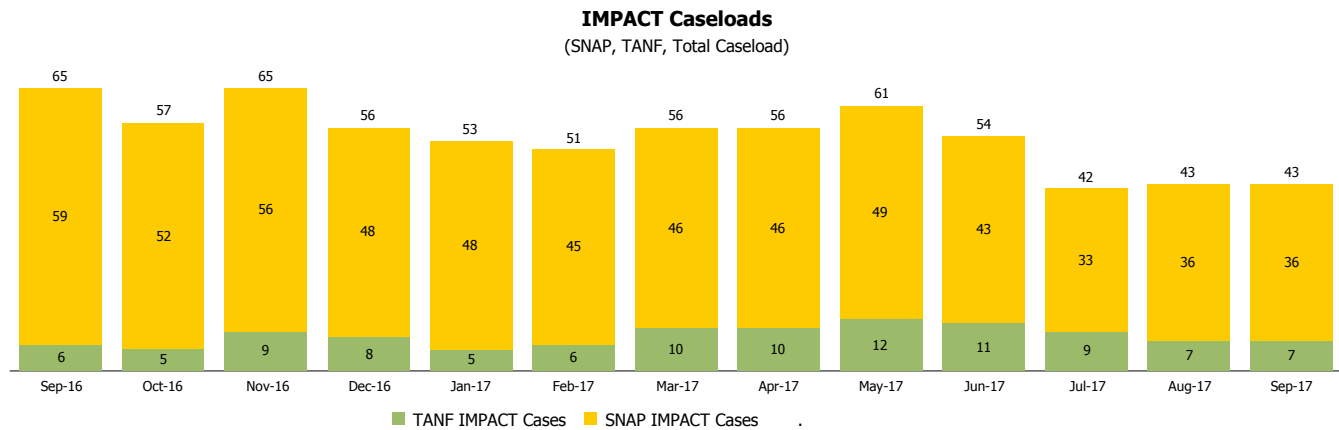
Monthly Management Report

Reporting Month: September 2017

Location: Bartholomew County

INDIANA MANPOWER PLACEMENT AND COMPREHENSIVE TRAINING (IMPACT)

	September 2017	August 2017	September 2016	Annual Change
Number of IMPACT cases	43	43	65	-33.85%
Number of TANF IMPACT adults	7	7	6	16.67%
Number of SNAP IMPACT Cases	36	36	59	-38.98%
Total number of adults employed	11	13	22	-50.00%
Number of TANF IMPACT adults newly employed (within past 30 days)	1	1	3	-66.67%
Number of SNAP IMPACT adults employed	10	12	19	-47.37%
Total number of adults ineligible due to employment	45	54	65	-30.77%
Number of TANF adults ineligible due to employment	0	0	0	
Number of SNAP adults ineligible due to employment	45	54	65	-30.77%



Note:

All data July 2014 and following will be broken out according to the new DFR region structure effective July 1 2014.