



DIVISION OF FAMILY RESOURCES

Adams County Monthly Management Report November 2017

State of Indiana

Eric Holcomb
Governor

Family and Social Services Administration

Jennifer Walthall, M.D.
Secretary

Division of Family Resources

Adrienne Shields
Director

For questions regarding data on this report contact:
office.Communications@fssa.IN.gov



State of Indiana

Published December 2017



DIVISION OF FAMILY RESOURCES

Monthly Management Report

Reporting Month: November 2017

Location: Adams County

TEMPORARY ASSISTANCE FOR NEEDY FAMILIES (TANF)

Child-Only and One-Parent Families	Nov 30, 2017	October 2017	November 2016	Annual Change
Number of families receiving TANF Grants	16	16	21	-23.81%
Total number of grant recipients	28	28	40	-30.00%
Number of adult grant recipients	4	3	5	-20.00%
Number of child grant recipients	24	25	35	-31.43%
Total payments	\$3,044	\$2,783	\$3,947	-22.88%
Average payment per case	\$190.25	\$173.94	\$187.95	1.22%
Average payment per recipient	\$108.71	\$99.39	\$98.68	10.17%
Number of cases with benefits reduced to zero	0	0	0	0%
Number of recipients with benefits reduced to zero	0	0	0	0%
Number of adult recipients with benefit reduced to zero	0	0	0	0%
Number of child recipients with benefit reduced to zero	0	0	0	0%

Two-Parent Families	Nov 30, 2017	October 2017	November 2016	Annual Change
Number of families receiving TANF Grants	0	0	0	0%
Total number of grant recipients	0	0	0	0%
Number of adult grant recipients	0	0	0	0%
Number of child grant recipients	0	0	0	0%
Total payments	\$0	\$0	\$0	0%
Average payment per case	\$0.00	\$0.00	\$0.00	0.00%
Average payment per recipient	\$0.00	\$0.00	\$0.00	0.00%
Number of cases with benefits reduced to zero	0	0	0	0%
Number of recipients with benefits reduced to zero	0	0	0	0%
Number of adult recipients with benefit reduced to zero	0	0	0	0%
Number of child recipients with benefit reduced to zero	0	0	0	0%

Note:

All data July 2014 and following will be broken out according to the new DFR region structure effective July 1 2014.

Source:



DIVISION OF FAMILY RESOURCES

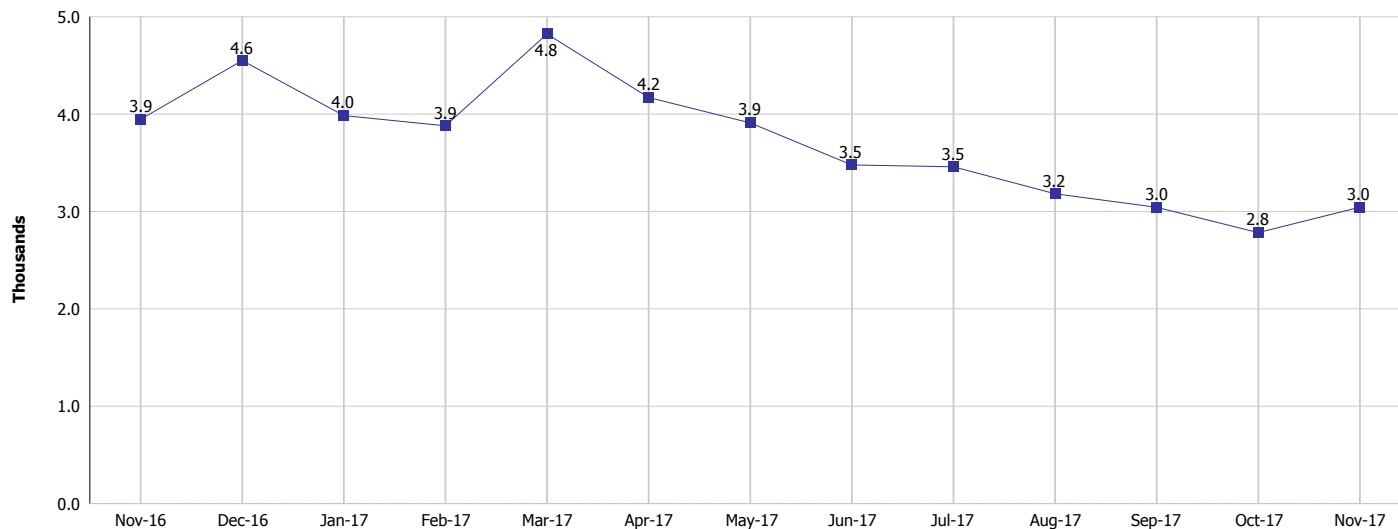
Monthly Management Report

Reporting Month: November 2017

Location: Adams County

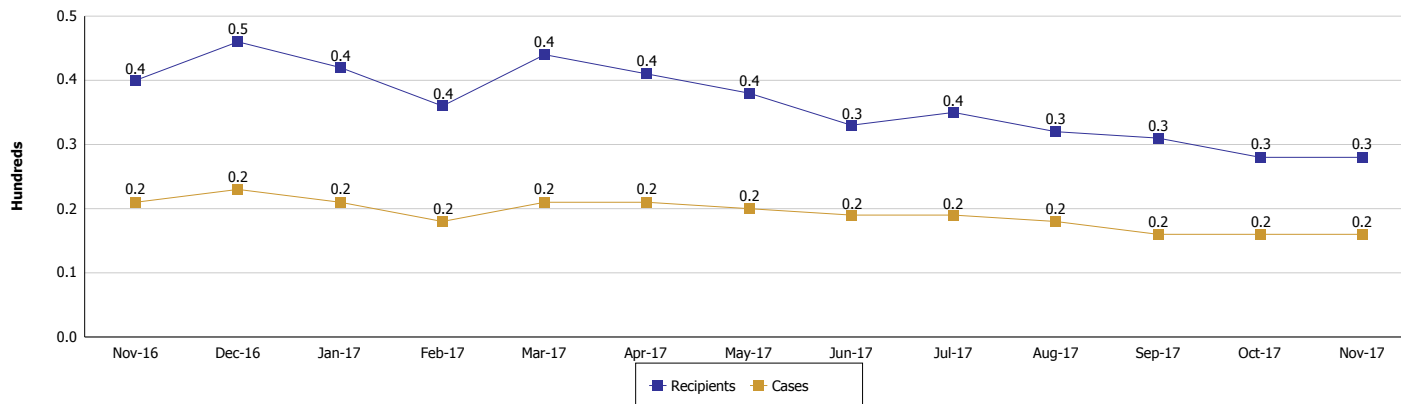
TEMPORARY ASSISTANCE FOR NEEDY FAMILIES (TANF)

TANF Regular And TANF Two-Parent Cash Assistance



TANF Cases and Recipients

(TANF Regular and TANF Two-Parent)



Note:

All data July 2014 and following will be broken out according to the new DFR region structure effective July 1 2014.



DIVISION OF FAMILY RESOURCES

Monthly Management Report

Reporting Month: November 2017

Location: Adams County

SUPPLEMENTAL NUTRITION ASSISTANCE PROGRAM (SNAP)

	November 2017	October 2017	November 2016	Annual Change
Total issuance	\$210,075	\$213,297	\$229,687	-8.54%
Number of households receiving SNAP benefits	830	842	900	-7.78%
Number of recipients	1,874	1,910	2,049	-8.54%
Average issuance per household	\$253.1	\$253.32	\$255.21	-0.83%
Average issuance per recipient	\$112.1	\$111.67	\$112.1	0.00%

Note:

All data July 2014 and following will be broken out according to the new DFR region structure effective July 1 2014.



DIVISION OF FAMILY RESOURCES

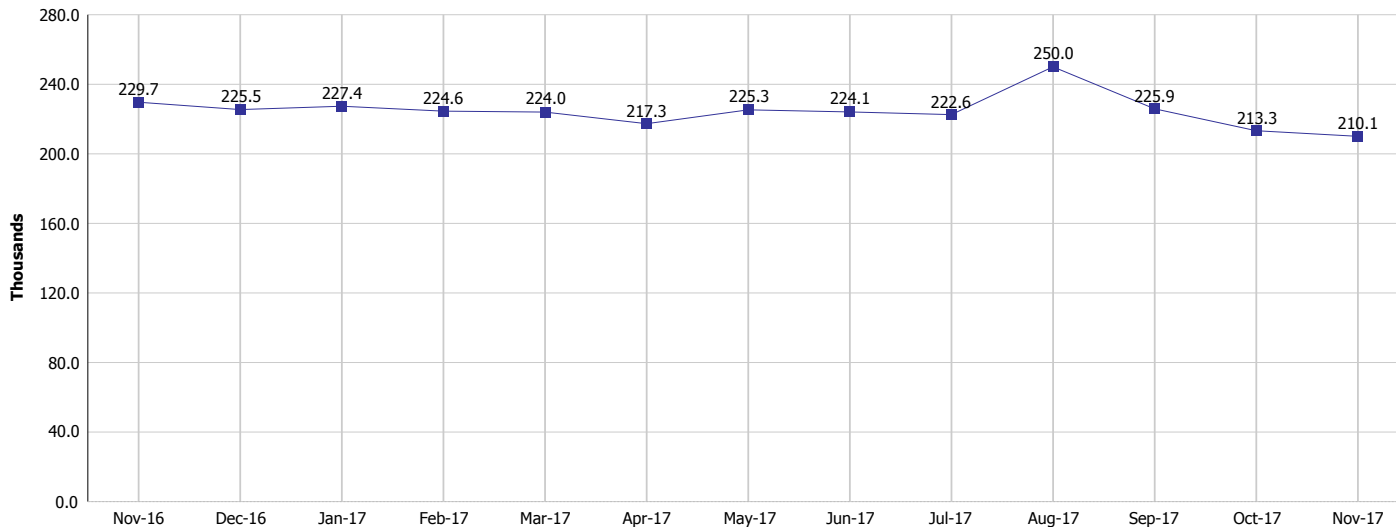
Monthly Management Report

Reporting Month: November 2017

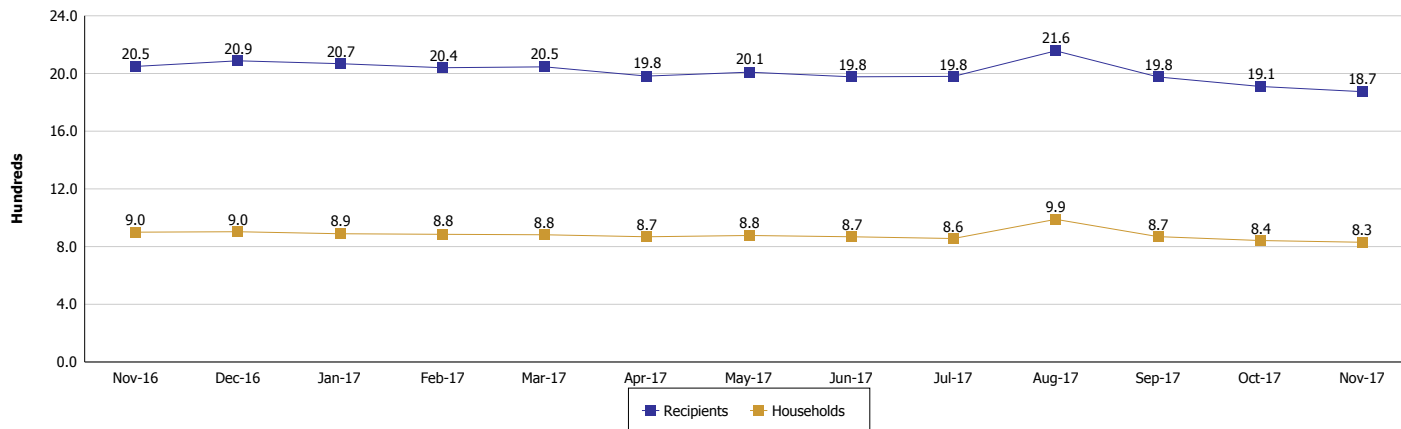
Location: Adams County

SUPPLEMENTAL NUTRITION ASSISTANCE PROGRAM (SNAP)

SNAP Issuance



SNAP Households and Recipients



Note:

All data July 2014 and following will be broken out according to the new DFR region structure effective July 1 2014.



DIVISION OF FAMILY RESOURCES

Monthly Management Report

Reporting Month: November 2017

Location: Adams County

HIP 2.0 and SNAP

	November 2017	October 2017	November 2016	Annual Change
Total HIP 2.0 Members	1,371	1,396	1,297	5.71%
HIP Members also SNAP Recipients	454	467	493	-7.91%
Percentage HIP Members SNAP Recipients	33.1%	33.5%	38.0%	1.61%
HIP Members SNAP ABAWDs	9	11	15	-40.00%
Percentage HIP Members SNAP ABAWDs	0.7%	0.8%	1.2%	1.61%

Note:

All data July 2014 and following will be broken out according to the new DFR region structure effective July 1 2014.



DIVISION OF FAMILY RESOURCES

Monthly Management Report

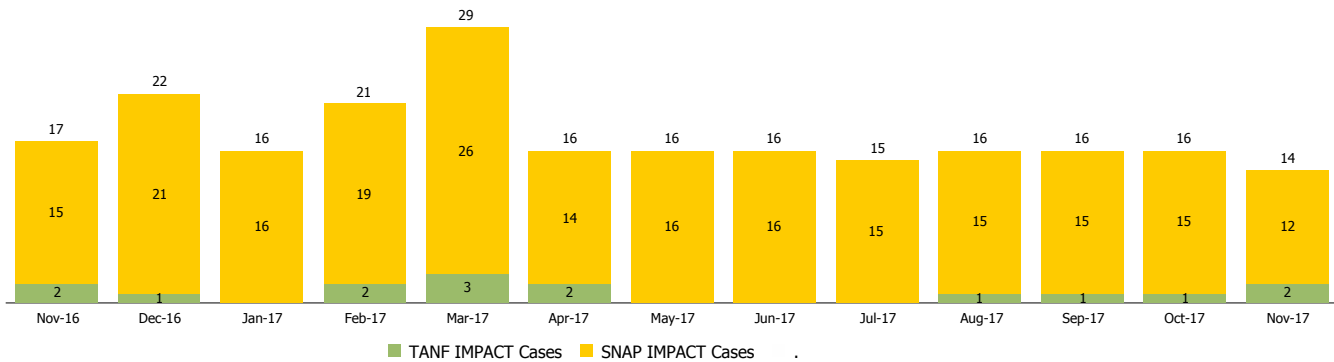
Reporting Month: November 2017

Location: Adams County

INDIANA MANPOWER PLACEMENT AND COMPREHENSIVE TRAINING (IMPACT)

	November 2017	October 2017	November 2016	Annual Change
Number of IMPACT cases	14	16	17	-17.65%
Number of TANF IMPACT adults	2	1	2	0.00%
Number of SNAP IMPACT Cases	12	15	15	-20.00%
Total number of adults employed	4	15	6	-33.33%
Number of TANF IMPACT adults newly employed (within past 30 days)	1	0	1	0.00%
Number of SNAP IMPACT adults employed	3	15	5	-40.00%
Total number of adults ineligible due to employment	21	37	21	0.00%
Number of TANF adults ineligible due to employment	0	0	0	
Number of SNAP adults ineligible due to employment	21	37	21	0.00%

IMPACT Caseloads
(SNAP, TANF, Total Caseload)



Note:

All data July 2014 and following will be broken out according to the new DFR region structure effective July 1 2014.