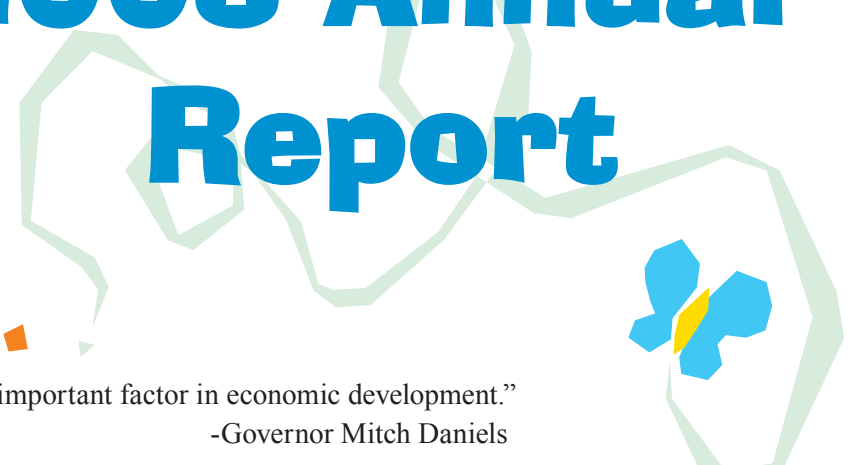


Indiana Bureau of Child Care - DFR
402 West Washington Street, Room W386 - MS02
Indianapolis, Indiana 46204



Indiana Bureau of Child Care 2008 Annual Report



“Access to quality childcare is an important factor in economic development.”
-Governor Mitch Daniels



Indiana Bureau of Child Care

2008 Annual Report

Bureau of Child Care Mission

The Child Care and Development Block Grant (CCDBG) was established in 1992 within the federal Department of Health and Human Services (HHS) under 45 CFR Part 98. The primary goals of CCDBG are to increase the accessibility and affordability of quality child care in each state.

More specific information about the purpose and regulations of the Block Grant may be found at www.acf.hhs.gov/programs/ccb/.

The Indiana Family and Social Services Administration (FSSA) is named as the Lead Agency to implement this federal grant in Indiana. Programmatic strategic planning and day to day operations are assigned to the Division of Family Resources, Bureau of Child Care (BCC).

The mission of the Bureau of Child Care is to provide all parents with informed child care choices that promote their children's health, safety and future success in school.

BCC has a staff of over 60 employees and has contracts with multiple service providers to provide ongoing operations and continuous quality improvements.

BCC also maintains a statewide website www.childcarefinder.in.gov. This website may be used by parents to locate licensed or unlicensed, registered child care in their area. The website gives them information about provider inspections and validated complaints. Child Care Providers may also use this site to find helpful information in running their child care businesses and improving their quality of care. Child Care providers can visit the website to find helpful information about technical assistance and other support services that are available to them.

From the Child Care Administrator

The Bureau of Child Care (BCC) staff and our partners were very busy last year.* The Indiana Child Care Development Fund (CCDF) voucher program served over 57,000 children last year. Indiana was also chosen as a first round state to complete a federally required report regarding program eligibility error rates. Indiana reported a final error rate of only 2.6%.

We continued to provide and enhance services that are designed to improve the quality of child care in Indiana. On 01/01/08, we launched Paths to QUALITY, Indiana's homegrown model of a Quality Rating and Improvement System. Paths to QUALITY is a free and voluntary program designed to give parents information about the quality of care they are choosing for their children, as well as to offer resources to providers that will assist them in providing high quality care to Indiana's youngest children.

The Indiana Child Care Health Consultant program was implemented statewide in 2008. In just our first year, we provided hundreds of free local health and safety trainings and on site consultation services to well over a thousand participants.

We continued to assist child care providers in reaching their professional goals by providing TEACH scholarships, free training and mentoring services, and resource libraries.

We expanded the list of BCC accepted national accreditations to include the Association of Christian Schools International (ACSI), to ensure that providers and parents have a variety of choices when deciding what is best for their children.

Indiana has much to celebrate in the early care and education field. Please stay tuned as we continue to demonstrate our commitment to offering and maintaining high quality choices for Hoosier parents and their children.

Melanie Brizzi

*Federal Fiscal Year (FFY) 2008: 10/01/07–09/30/08

Bureau of Child Care Statement of Financial Responsibilities – FFY 2008

BCC is responsible for 3 separate programming budgets, the largest by far being the CCDF Block Grant.

Child Care Development Fund (CCDF) Block Grant

Purpose: To provide child care subsidies to low income, working families and to promote and enhance the quality of early care and education so that Indiana children are safe, healthy and learning. Federal and state matching funds are used to support this block grant.

Total Budget FFY 2008: \$210 million

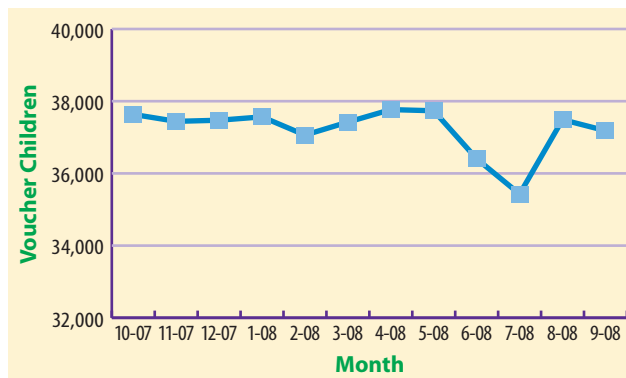
Projected Budget FFY 2009: \$210 million

Child care subsidy services are a vital support to families receiving Temporary Assistance for Needy Families (TANF) during welfare-to-work activities and during the transition from TANF dependence. In 2008, \$37 million in TANF funds was transferred to the CCDF program to help support low income working families.

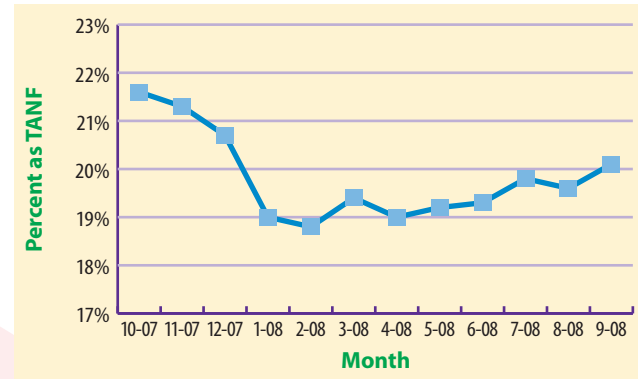
School Age Child Care (SACC) Project Fund

Purpose: IC 12-17-12 sets the purpose of this program to provide more access to school age child care programs for low income families. In State Fiscal Year (SFY) 2008,* 23 school age child care providers representing 95 facilities received state funding to provide services to ap-

Count of Children Receiving Child Care Subsidy by Month, FFY 2008



Monthly % of Total Families Receiving Child Care Subsidy Marked as Temporary Assistance for Needy Families, FFY 2008



proximately 5,444 Indiana children.

Total SFY 2008 Budget: \$950,000

Projected SFY 2009 Budget: \$950,000

Child Care Fees and Fines

Purpose: IC 12-17.2-2-3 establishes a fund to receive child care application fees and fines. The funds are to be used by BCC to provide resources for licensing enforcement activities and staff training and development.

Total SFY 2008 Budget: \$100,000

Projected SFY 2009 Budget: \$100,000

Licensed Child Care in Indiana – providing parents with child care choices where their children can be safe and healthy

BCC is responsible for license issuance and compliance monitoring for Licensed Child Care Centers and Licensed Child Care Homes in Indiana.

Licensed Child Care Centers

Child Care Centers are defined by law in Indiana Code 12-7-2-28.4 as:

“Child care center” as set forth in IC 12-7.2 means a nonresidential building where at least one (1) child receives child care from a provider:

- (A) while unattended by a parent, legal guardian, or custodian;

- (B) for regular compensations; and
- (C) for more than four (4) hours in each of ten (10) consecutive days per year, excluding intervening Saturdays, Sundays, and holidays.

Child care centers are governed by the laws set forth in Indiana Code 12-17.2-2 and Indiana Code 12-12.7-4. In addition, child care centers must abide by the rules in 470 Indiana Administrative Code 3-4.7.

Licensed Child Care Homes

Licensed Child Care Homes are defined by law in Indiana Code 12-7-2-28.6 as:

(a) “Child care home”, for purposes of IC 12-17.2, means a residential structure in which at least six (6) children (not including the children for whom the provider is a parent, stepparent, guardian, custodian, or other relative or any child who is at least fourteen (14) years of age and does not require child care) at any time receive child care from a provider:

- (1) while unattended by a parent, legal guardian, or custodian;
- (2) for regular compensation; and
- (3) for more than four (4) hours but less than twenty-four (24) hours in each of ten (10) consecutive days per year, excluding intervening Saturdays, Sundays, and holidays.

(b) The term includes:

- (1) a class I child care home; and
- (2) a class II child care home.

Licensed Child Care Homes are governed by the laws set forth in Indiana Code 12-17.2-2 and Indiana Code 12-17.2-5. In addition, child care homes must abide by the regulations in 470 Indiana Administrative Code 3-1.1, 3-1.2, and 3-1.3.

Class I child care homes have a capacity of twelve (12) children plus an additional three (3) school age children that are grade one (1) or above. A class II home has a capacity to care for sixteen (16) children.

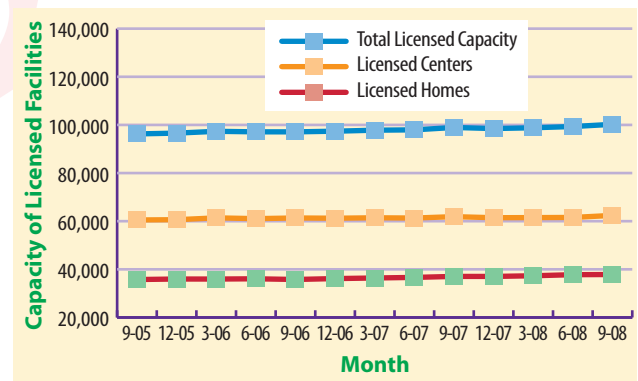
Licensed Child Care Highlights for 2008

The Child Care Center and Licensed Child Care Home Advisory Committees were established per legislation effective 07/01/07. For the first time, both committees presented testimony to the Committee

on Child Care. Issues presented included: no protection of the identity of a person making a complaint about a child care facility; the impact of local zoning and covenants on home providers; and the difference in regulation that exist between various child care program types. All Advisory Committee minutes and schedules of meetings are posted on www.childcarefinder.in.gov.

The number of Licensed Child Care Centers increased in 2008. The number of Licensed Child Care Homes have increased every year since 2006. CCDF Voucher subsidies paid to licensed child care providers increased from 74.6% in 2007 to 76.7% in 2008.

Indiana Licensed Capacity



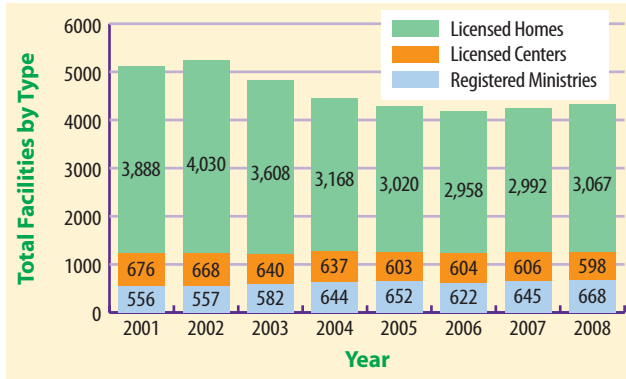
Registered Child Care in Indiana

BCC is also responsible for registration issuance and compliance activities for Unlicensed Registered Child Care Ministries in Indiana. These facilities are exempt from licensure per IC 12-17.2-2-8.

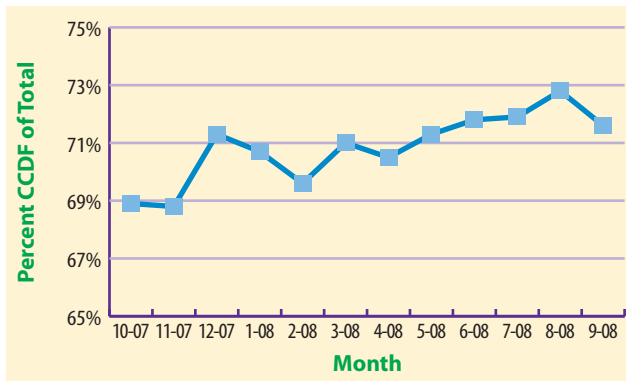
Unlicensed Registered Child Care Ministries are governed by the laws set forth in Indiana Code 12-17.2-2 and Indiana Code 12-17.2-6. In addition, an Unlicensed Registered Child Care Ministry must abide by the rules outlined in 470 Indiana Administrative Code 3-4.5 concerning registration of child care ministries and 410 IAC 7-24. These rules represent the minimum general sanitation and fire safety standards necessary to operate an Unlicensed Registered Child Care Ministry.

BCC offers a free, Voluntary Certification Program (VCP) to Unlicensed Registered Child Care Ministries who choose to meet the basic health, safety and nutrition standards required for licensure.

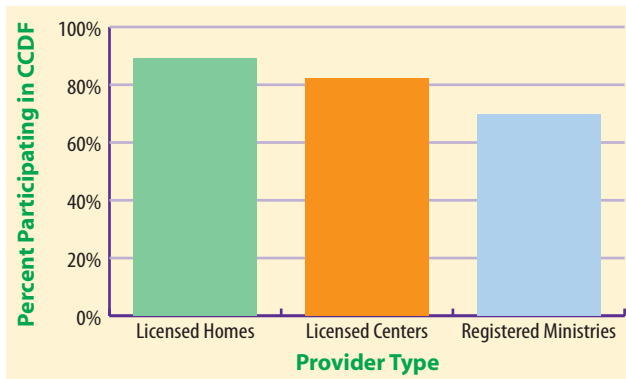
Indiana Licensed/Registered Facilities



% of CCDF Children in Licensed Care Compared to Non CCDF, FFY 2008



% of Providers Participating in CCDF Compared to Not Participating, FFY 2008

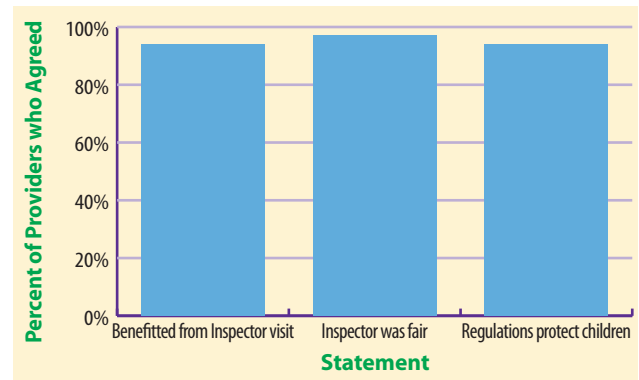


BCC Provider Satisfaction Rates

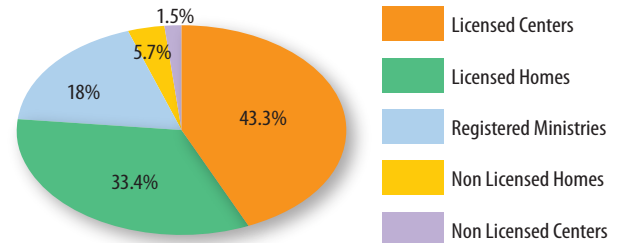
BCC mails a 19 question survey to all regulated child care providers who receive an inspection visit during the year. In 2008, a total of 4,579 surveys were mailed to providers, and 2,059 surveys were returned.

Provider Satisfaction

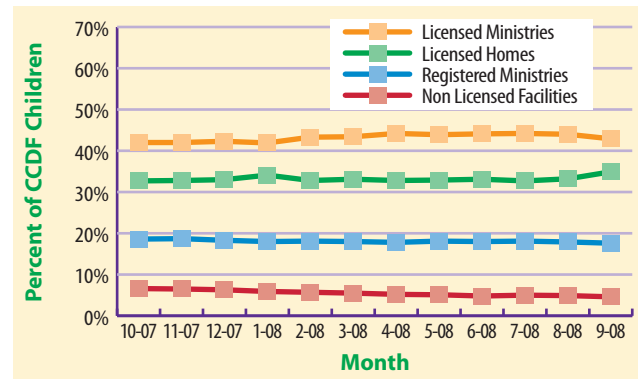
% of survey respondents who agreed / strongly agreed



CCDF Direct Service Expenditures by Provider Type, FFY 2008



% of CCDF Children by Provider Type, FFY 2008



Parent Education and Community Outreach

Finding quality child care is one of the most important decisions that a family must make for their children. Because Indiana law allows multiple exemptions to licensing, parents often have difficulty discerning between the types of care that they are considering and what standards each program may or may not meet. BCC funds ongoing consumer education and outreach programs to help families make informed decisions about what is best for their child.

Parent Referrals

During 2008, 16,397 unique families accessed the services of a statewide system of child care resource and referral agencies. This reflects a 16% increase over the previous year. Each of these families was provided with consumer education materials and one-on-one counseling regarding the selection of quality child care for their children.

Website Information

Families also accessed child care information online through Indiana's web based child care site www.childcarefinder.in.gov. The site is integrated with the state licensing and Paths to QUALITY database to provide parents with up-to-date information on a provider's current license status, inspection history and Paths to QUALITY participation so parents can make better informed decisions on choosing child care. The website includes Indiana's child care rules and regulations as well as other helpful resources for parents and child care providers.

Paths to QUALITY

Paths to QUALITY is Indiana's voluntary and free Quality Rating and Improvement System (QRIS). Throughout the United States, these types of systems are being designed and implemented to improve the availability of high quality of child care, to support child care providers in reaching their professional goals, and to give families a valuable, easily recognizable and consistent tool to use in selecting child care for their children. Quality Rating

and Improvement Systems also provide an accountability measure for funding and create an alignment between licensing, subsidy and quality across child care, Head Start and Kindergarten foundations.

Research shows that high quality early learning experiences prepare children for future success in school, work and life. From birth through age 3 is the most important time for the growth of the human brain. A child's brain develops in response to the child's experiences by building neurological networks in reaction to the environment.

The standards for Paths to QUALITY are consistent but tailored for family child care homes and for licensed centers and unlicensed registered ministries. Paths to QUALITY is a system where each level builds on the foundation of the previous one, resulting in significant quality improvements at each stage and resulting in national accreditation at the highest level. The system validates programs and providers for ongoing efforts to achieve higher standards of quality and provides incentives and awards for success. The four levels address:

- Level One: Health and safety needs of children met.
- Level Two: Environment supports children's learning.
- Level Three: Planned curriculum guides child development and school readiness.
- Level Four: National accreditation (the highest indicator of quality) is achieved.

Paths to QUALITY is open to all licensed child care Centers, Licensed Homes, and Unlicensed Registered Child Care Ministries who meet the Voluntary Certification Program standards. As of March 2009, over 1,130 providers have joined Paths to QUALITY.

Thank you to our many partners that have contributed greatly to the success of Paths to QUALITY: the Indiana Association of Child Care Resource and Referral and all eleven local Resource and Referral offices, the Indiana Association for the Education of Young Children, the Indiana Department of Education, Purdue University, Ball State University, the Indiana Head Start Collaboration Office and the Consultants Consortium.

BCC Fact Sheet*

Indiana - Statewide Summary Voucher & Contract Centers Program FFY 2008

Caseload

- 29,907 unique families and 57,346 unique children were authorized to receive child care assistance for this period.
- An average of 19,652 families and 37,217 children were authorized to receive child care assistance per month over this period.
- An average of 5,869 children were on wait lists for this period.

Children

- 71.8% of children received child care assistance in licensed care.
- School-age children (ages 6+ years) constituted 31.8% of all children who received child care assistance.
- Children of Hispanic or Latino Ethnicity accounted for 8.3% of all children who received child care assistance.
- Race codes: African American: 56.0%; White: 51.0%; American Indian / Alaskan: 0.8%; Asian: 0.4%; Hawaiian / Pacific Islander: 0.1%

Families

- 79.2% of families received subsidies because of employment.
- 25.6% of families had copayments.
- The average family size was 3.7 and the average number of children served per family was 1.9.
- 95.2% of families were headed by a single parent.
- 21.4% of families were TANF recipients and 21.1% listed TANF as a source of income.
- 74.3% of families were below the poverty level. 3.2% of families were above 140% of poverty.

Expenditures

- The average cost of care per week per child during this period was \$93.52 (\$4,863 annualized).
- Average weekly expenditures for children under 1 year old were \$120.24 (\$6,252 annualized).
- Average weekly expenditures for school-age children (ages 6+ years) were \$71.68 (\$3,727 annualized).
- 76.4% of total expenditures were for children under 6 years old.

County Stats

- Marion County accounted for the largest proportion of families served with 25.8% of all the Intake and Center caseloads.
- The highest average cost of care was in Hamilton County at \$144.88 per week per child (\$7,534 annualized).
- The lowest average cost of care was in Carroll County at \$52.10 per week per child (\$2,709 annualized).
- Floyd County had the greatest proportion of TANF recipients, where 42.8% of families receiving child care subsidies also received TANF income.

Run Date: 12/12/2008

*BCC = Bureau of Child Care

Early Care and Education in Indiana: Improving the Quality of Child Care

Research shows that high quality early learning experiences prepare children for future success in school, work and life. From birth to age 3 is the most important time for growth of the human brain. A child's brain develops in response to the child's experiences by building neurological networks in reaction to the environment.

A quality early care and learning environment is critical to this development and to school readiness skills. By age 3, children have already developed most of their capacity to acquire vocabulary and 85% of a child's capacity to learn is determined by age 5.

Child Care Providers Can Access Free Health Consultation and Training Services

Access to health professionals who can provide education to child care providers can make a dramatic difference in the health and safety of children. The Bureau of Child Care offers a free, voluntary Health Consultation Program to all child care providers in Indiana. Nursing and Dietary professionals are available as a training and support resource for health and nutrition issues.

On-site and telephone consultation, as well as a statewide training network in partnership with the Local Child Care Resource and Referral agencies are a few examples of the types of services offered. Depending on the specific need, the consultants can provide educational information either in written handout form, by e-mail, loaned video tape, or personal presentations.

The primary purpose of the program is to increase the health and safety of all children. Specific indicators of health and safety education and information will be targeted. These indicators include nutrition and health, immunization, communicable disease and sanitation, mental health, and medical home.

In FY 2008, 3,737 child care providers attended a free training, workshop or class provided by a BCC health consultant, have received educational materials and/or received technical assistance.

Parent Education and Community Outreach

Finding quality child care is one of the most important decisions that a family must make for their children. Because Indiana law allows multiple exemptions to licensing, parents often have difficulty discerning between the types of care that they are considering and what standards each program may or may not meet. BCC funds ongoing consumer education and outreach programs to help families make informed decisions about what is best for their child.

Parent Referrals

During 2008, 14,104 unique families accessed the services of a statewide system of child care resource and referral agencies. Each of these families was provided with consumer education materials and one-on-one counseling regarding the selection of quality child care for their children.

Website Information

Families also accessed child care information online through Indiana's web based child care site www.childcarefinder.in.gov. The site is integrated with the state licensing database to provide parents with up-to-date information on a provider's cur-

rent license status and inspection history so parents can make better informed decisions on choosing child care. The website includes Indiana's child care rules and regulations as well as other helpful resources for parents and child care providers.

Child Care Provider Professional Development Resources

Resource	Purpose	2008 Results
T.E.A.C.H. Early Childhood® INDIANA	Educational scholarships to teachers, home providers and directors through both a formal credit based classroom education model from higher education institutions throughout Indiana, as well as through other non-traditional methods, such as online learning and on-site training	1,180 child care providers were awarded credit based educational scholarships earning 7,062 credit hours. 586 child care providers participated in nonformal Child Development Associate credential training and earned a total of 47,030 contact hours.
Safe Sleep Training	In an effort to reduce the number of infant deaths associated with sleeping environment, free trainings are offered statewide to child care providers and parents. This training is required by law for licensed child care homes and for legally exempt child care providers who serve CCDF voucher children.	Since March 2006 when the training first became available statewide, over 10,000 individuals have received this training.
Indiana Accreditation Project	On-site technical assistance and other quality improvement supports offered to child care providers seeking National Accreditation status. Approved accreditation bodies include: ACSI, COA, NAEYC, NECPA, NAFCC	284 facilities and 114 child care homes serving 10,684 children received financial and/or technical support for accreditation.
Foundations to the Indiana Academic Standards for Young Children Birth to Age 5	Child care providers have the opportunity of giving children an early advantage for success once these children enter school. BCC and the Indiana Department of Education partnered to assist providers in understanding how they can provide early child care experiences that will promote school readiness.	Indiana aligned our Paths to QUALITY voluntary child care standards with the Indiana Foundations. The BCC partnered with the Indiana Department of Education to provide Train the Trainer sessions on the Indiana Foundations. Thousands of child care providers and staff will participate in statewide Indiana Foundations training.
Resource Libraries	Child Care Resource & Referral agencies across the state maintain lending libraries designed to support families, providers and programs caring for young children. Lending libraries contain carefully selected materials for children of every age and ability. The resources are designed to enhance play and learning experiences for young children, such as prop boxes, children's books, small and large motor equipment, and a wide variety of additional toys and equipment. The libraries also contain materials to support individuals in their ability to care for young children, such as journals, curriculum guides and videos. Many of the lending libraries also have equipment on site such as laminators and book-binding machines for provider use.	Throughout 2008, nearly 2,000 providers accessed books, journals, toys, and other materials from the network of Child Care Resource & Referral lending libraries.