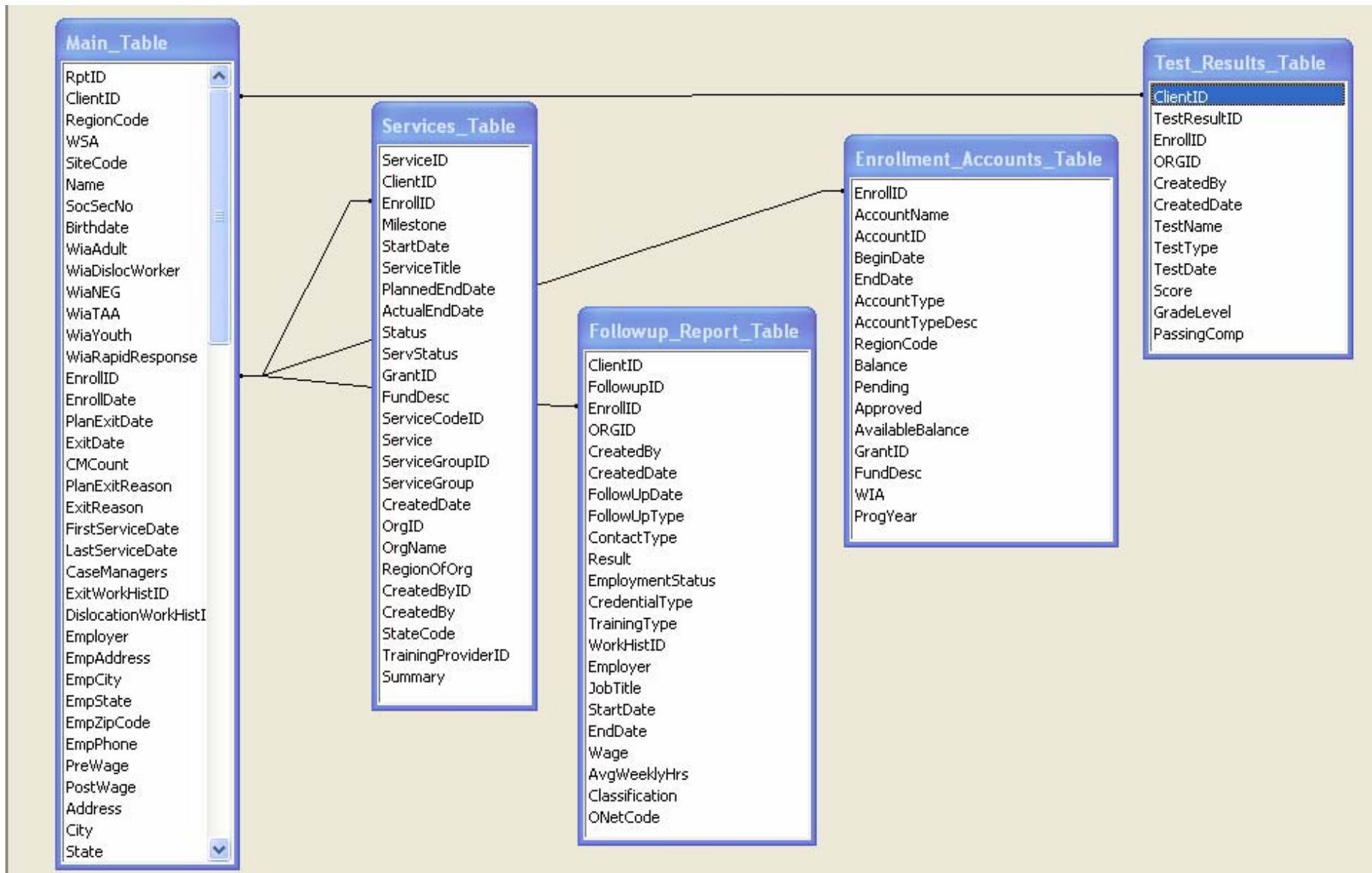


Regional Reporting Tables

Table of Contents

Table Relationships	2
MAIN_TABLE	
Definitions	3
Table to TrackOne Screens and Fields	7
SERVICES_TABLE	
Definitions	14
Table to TrackOne Screens and Fields	15
TEST_RESULTS_TABLE	
Definitions	16
Table to TrackOne Screens and Fields	17
ENROLLMENT_ACCOUNTS_TABLE	
Definitions	18
Table to TrackOne Screens and Fields	19
FOLLOWUP_REPORT_TABLE	
Definitions	20
Table to TrackOne Screens and Fields	21

REPORTING TABLES RELATIONSHIPS



Main report table:		
a. If the customer has a RegionOfOrg value, it uses that. (This field is from the Application.)		
b. If they do not (meaning they are Core Services only) , it uses the new FirstCoreRegion value if they have one.		
The Main table is ran first and the linked tables follow the same set of parameters based on the joins.		
ENROLLID is linked to the following tables: SERVICES_TABLE, ENROLLMENT_ACCOUNTS_TABLE, FOLLOWUP_REPORT_TABLE.		
CLIENTID is linked to TEST_RESULTS_TABLE		
MAIN_TABLE		
1	RptID	Primary Key for the table. The same ClientID may appear more than once since a client may have more than a single period of participation.
2	ClientID	ClientID from TrackOne (T1)
3	RegionCode	RegionCode assigned at the time of the conversion. This code should not be used, since it is just present for conversion clients. The field(s) to be used is RegionOfORg or the "FirstCoreRegion." "RegionCode will likely be removed from the table in the future. It was just used during the transition.
4	WSA	For historical purposes only -- Old WSA code from PMIS
5	SiteCode	For historical purposes only - Old Site Code from PMIS -- "Organization" is the field to use for the new site names in TrackOne.
6	Name	Client Name
7	SocSecNo	
8	Birthdate	
9	WiaAdult	Program Enrollment assignment from the Registration screen in TrackOne.
10	WiaDislocWorker	Program Enrollment assignment from the Registration screen in TrackOne.
11	WiaNEG	Program Enrollment assignment from the Registration screen in TrackOne.
12	WiaTAA	Program Enrollment assignment from the Registration screen in TrackOne.
13	WiaYouth	Program Enrollment assignment from the Registration screen in TrackOne.
14	WiaRapidResponse	Program Enrollment assignment from the Registration screen in TrackOne.
15	EnrollID	
16	EnrollDate	Same as the first service date. It is the common participation date.

