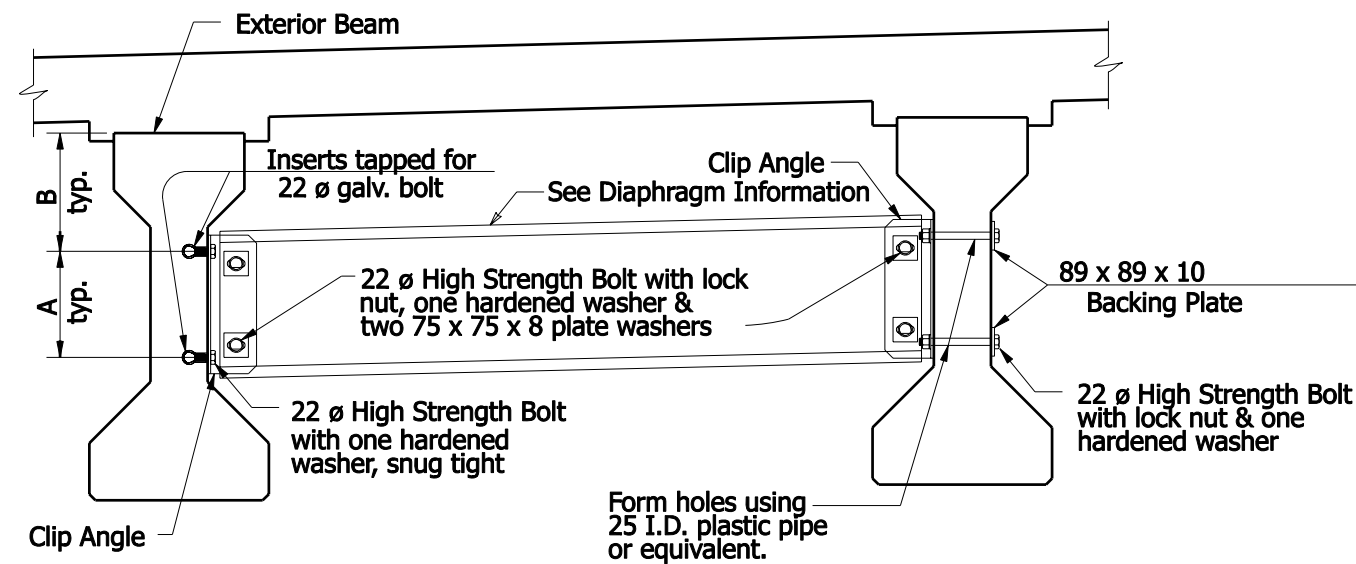


**INTERMEDIATE DIAPHRAGM**

*Typical for Square Structure*



**INTERMEDIATE DIAPHRAGM**

*Typical for Skewed Structure*

**NOTES:**

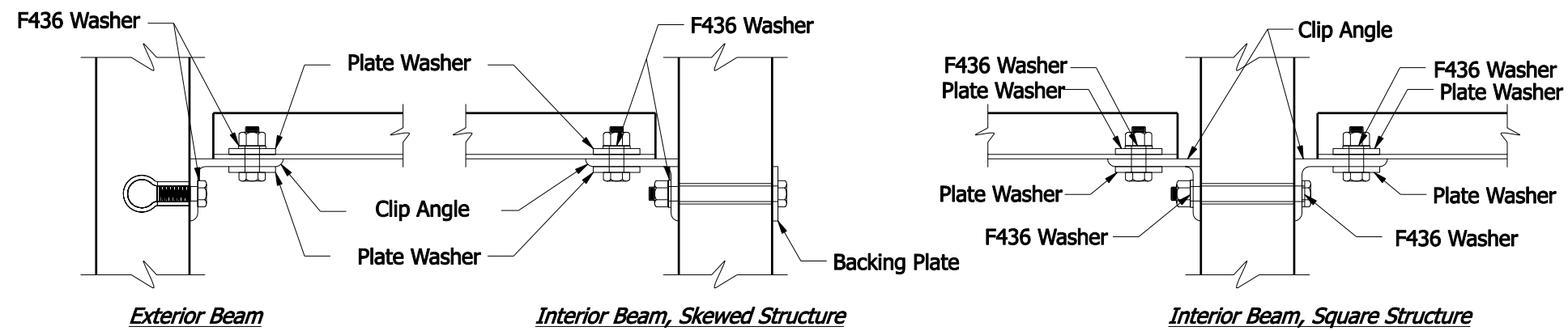
1. See Recurring Drawing 707-B-173d 2 of 6 for connection details.

Beam Type	Diaphragm Information						Channel Type
	Dimension						
	A	B	C	D	E	F	
Type II	229	305	330	152	89	75	C 310 x 31
Type III	330	368	432	254	89	100	MC 460 x 63.5
Type IV	406	445	508	254	13	100	MC 460 x 63.5

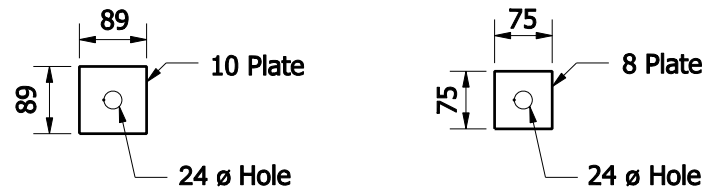
All Dimensions are in mm unless otherwise specified.

**INDIANA DEPARTMENT OF TRANSPORTATION**

**STEEL DIAPHRAGMS  
AASHTO I-BEAMS**

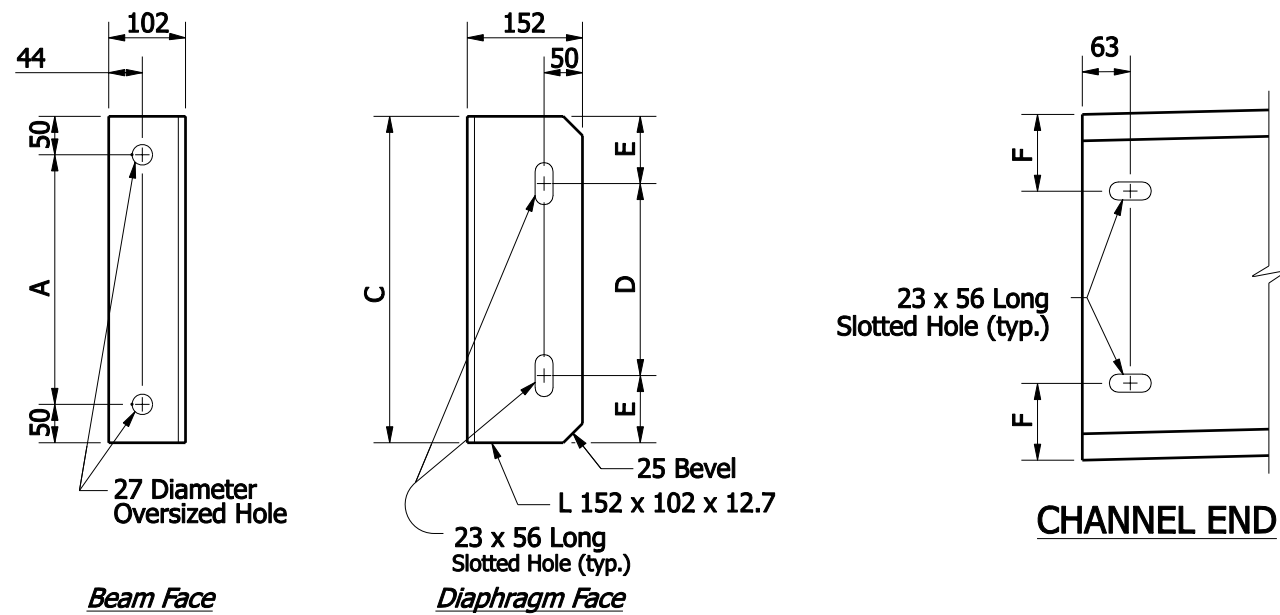


**CONNECTION DETAILS**



**BACKING PLATE**  
 Skewed Structure Only

**PLATE WASHER**

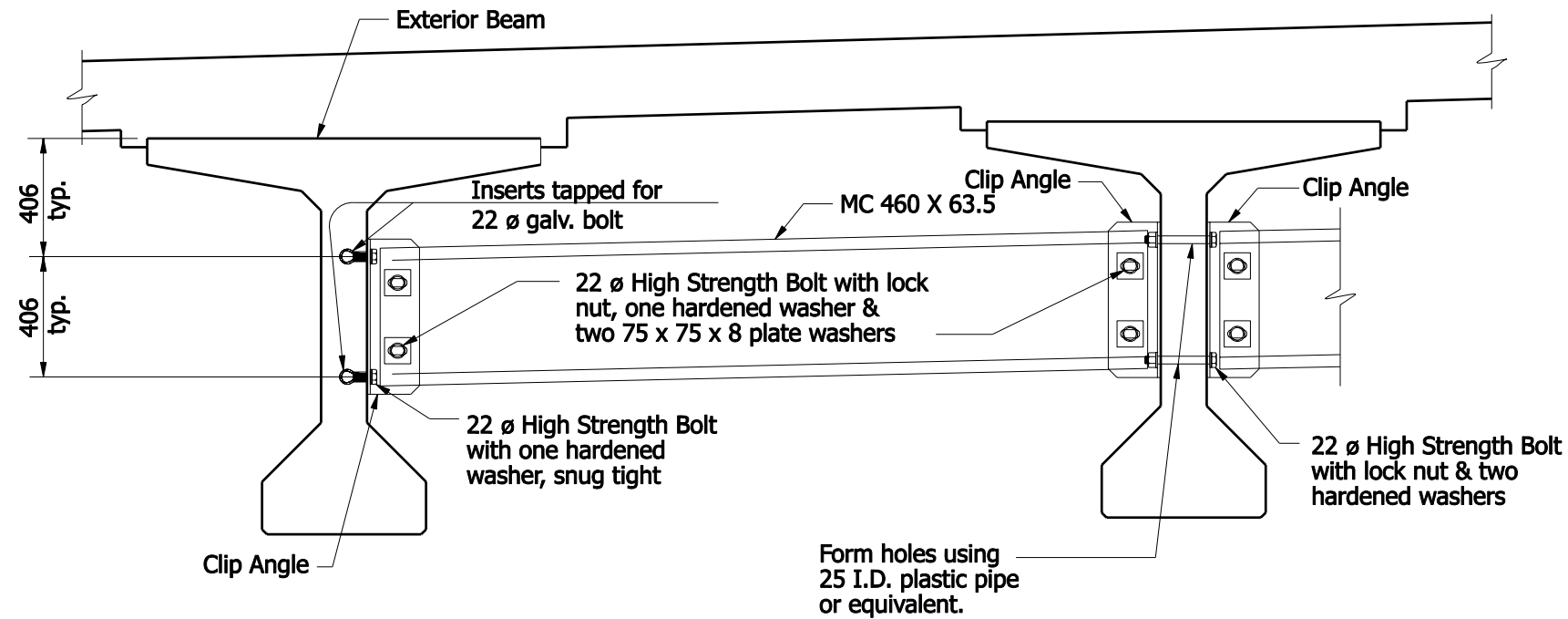


**CLIP ANGLE**

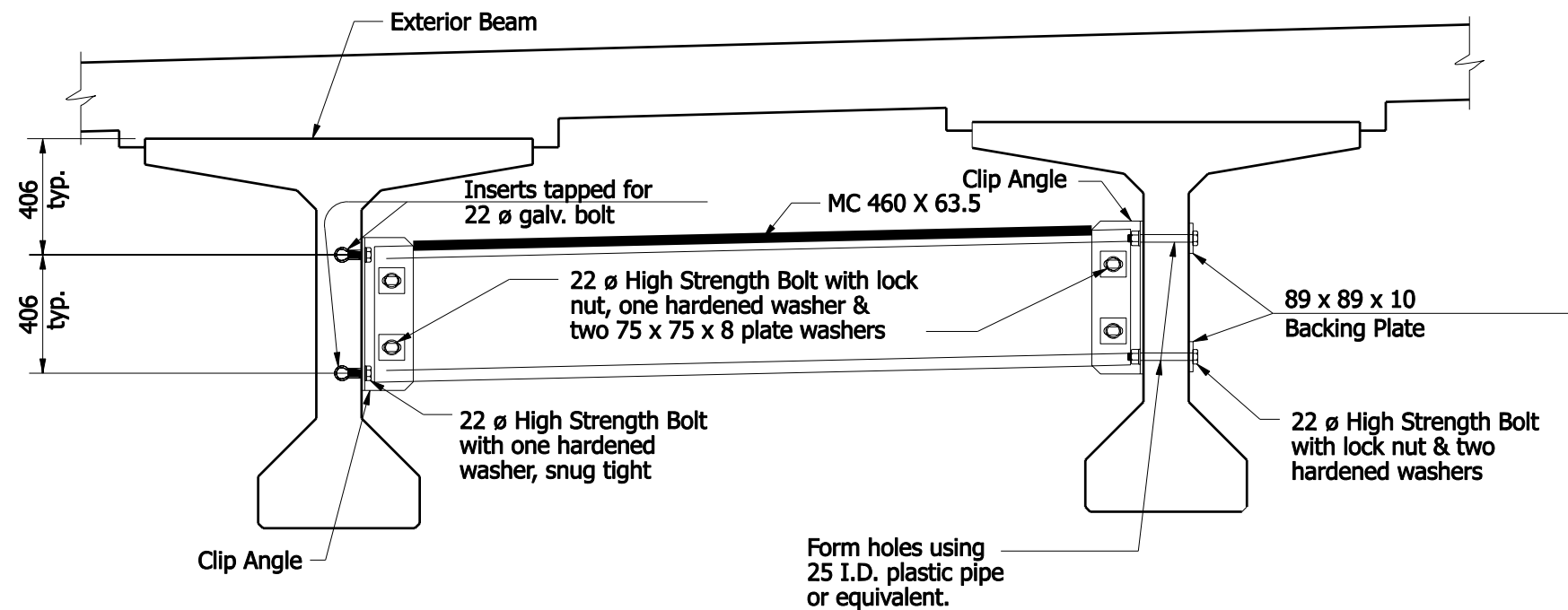
All Dimensions are in mm unless otherwise specified.

**INDIANA DEPARTMENT OF TRANSPORTATION**

**STEEL DIAPHRAGMS  
 AASHTO I-BEAMS**



**INTERMEDIATE DIAPHRAGM**  
*Typical for Square Structure*



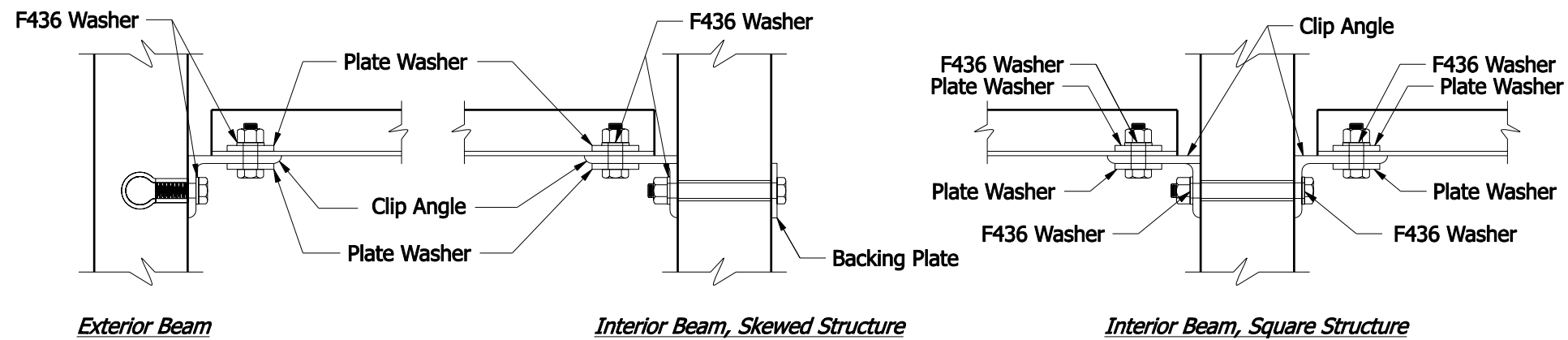
**INTERMEDIATE DIAPHRAGM**  
*Typical for Skewed Structure*

**NOTES:**

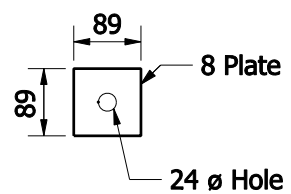
1. See Recurring Drawing 707-B-173d 4 of 6 for connection details.

All Dimensions are in mm unless otherwise specified.

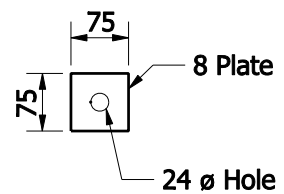
**INDIANA DEPARTMENT OF TRANSPORTATION**  
**STEEL DIAPHRAGMS**  
**INDIANA BULB-TEES, 1372-mm DEPTH**



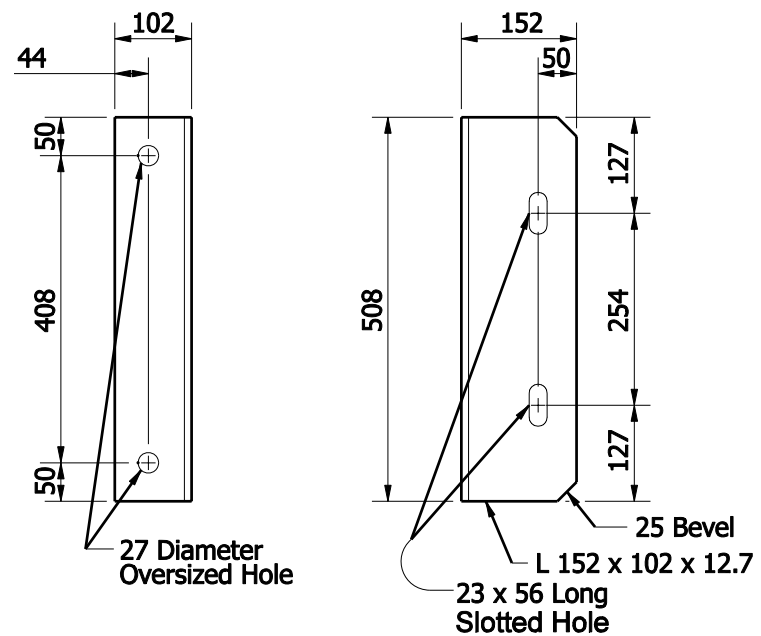
**CONNECTION DETAILS**



**BACKING PLATE**  
*Skewed Structure Only*



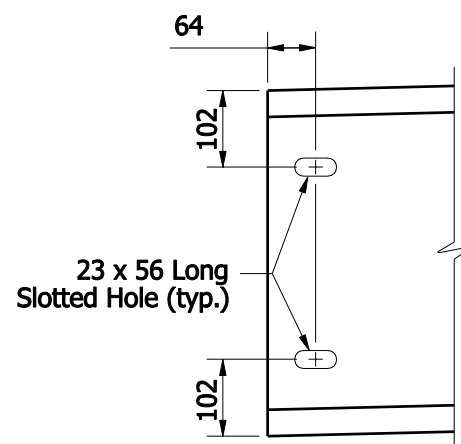
**PLATE WASHER**



**Beam Face**

**Diaphragm Face**

**CLIP ANGLE**



**CHANNEL END**

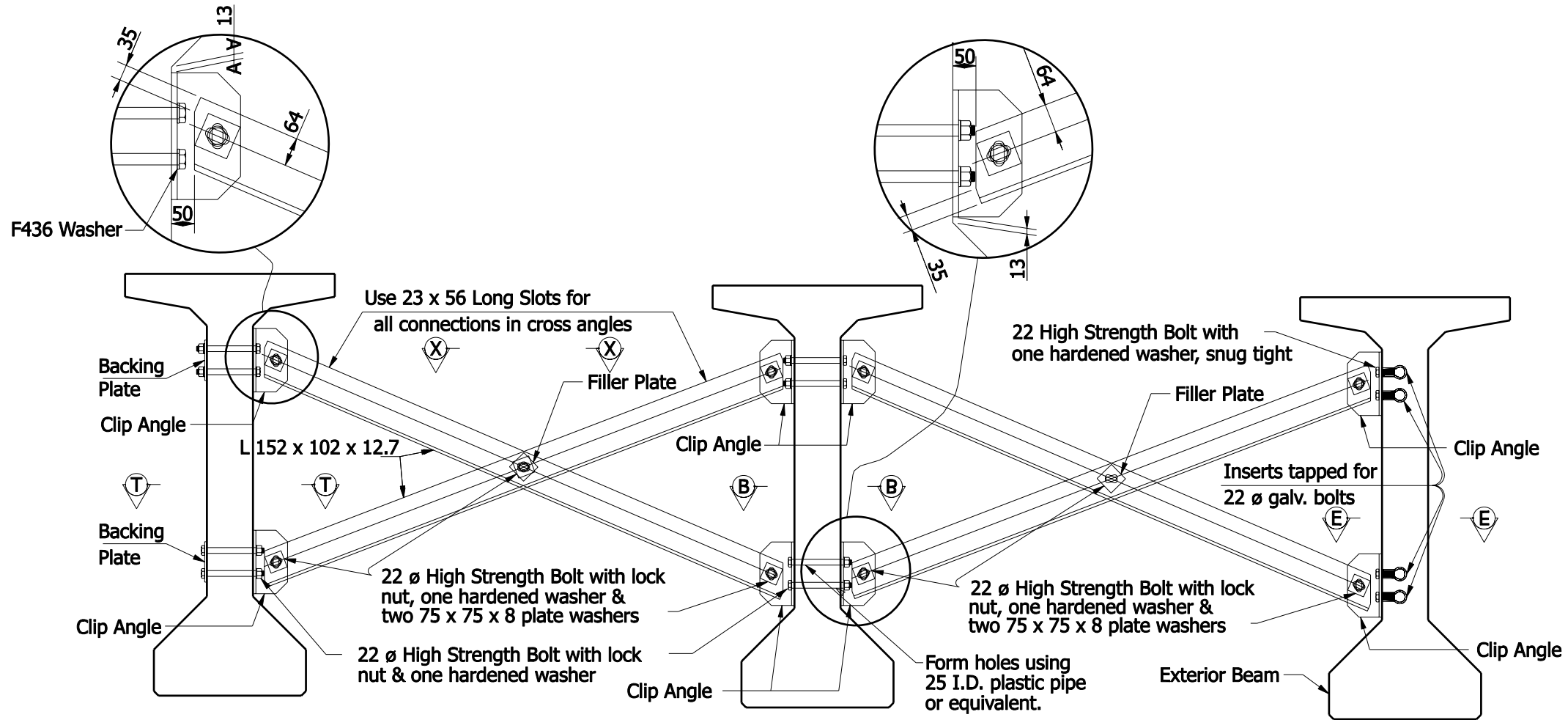
All Dimensions are in mm unless otherwise specified.

**INDIANA DEPARTMENT OF TRANSPORTATION**

**STEEL DIAPHRAGMS  
INDIANA BULB-TEES, 1372-mm DEPTH**

NOTES:

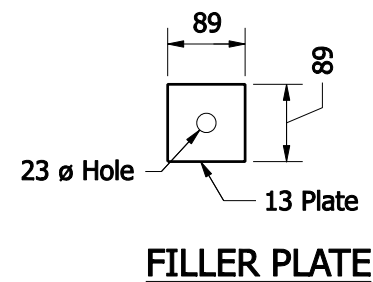
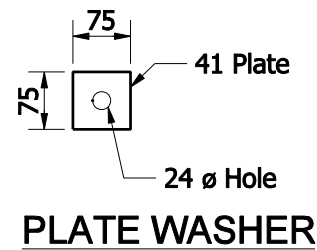
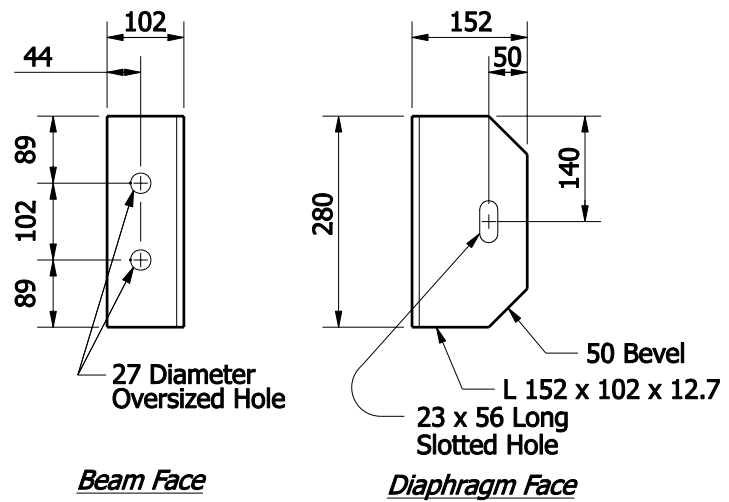
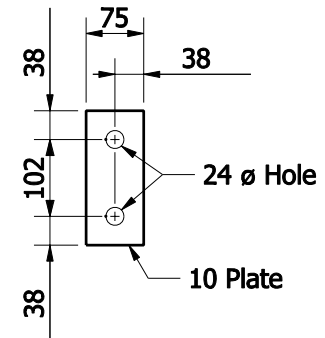
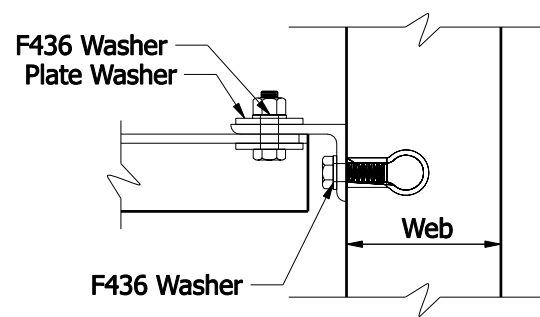
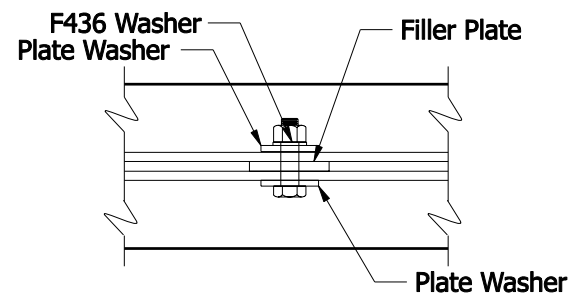
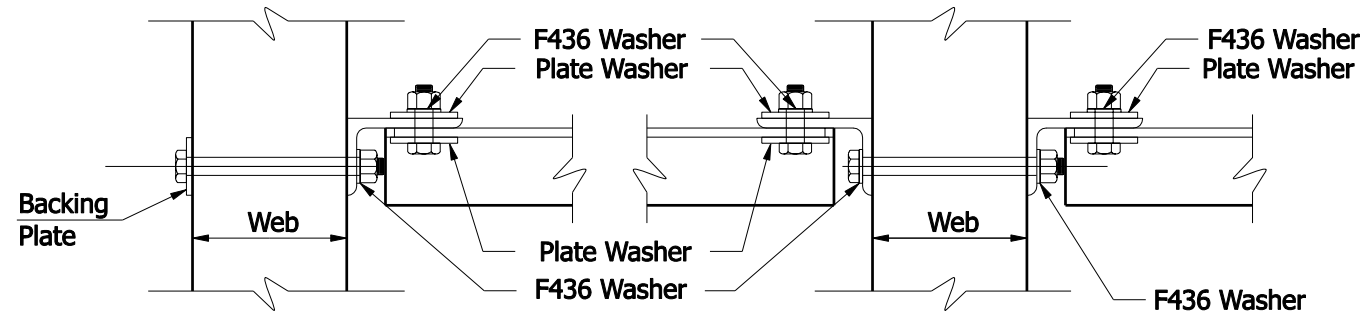
- 1. See Recurring Drawing 707-B-173d 6 of 6 for connection details.



INTERMEDIATE DIAPHRAGM DETAILS

All Dimensions are in mm unless otherwise specified.

INDIANA DEPARTMENT OF TRANSPORTATION	
STEEL DIAPHRAGMS	
INDIANA BULB-TEES, 1524 mm OR DEEPER	

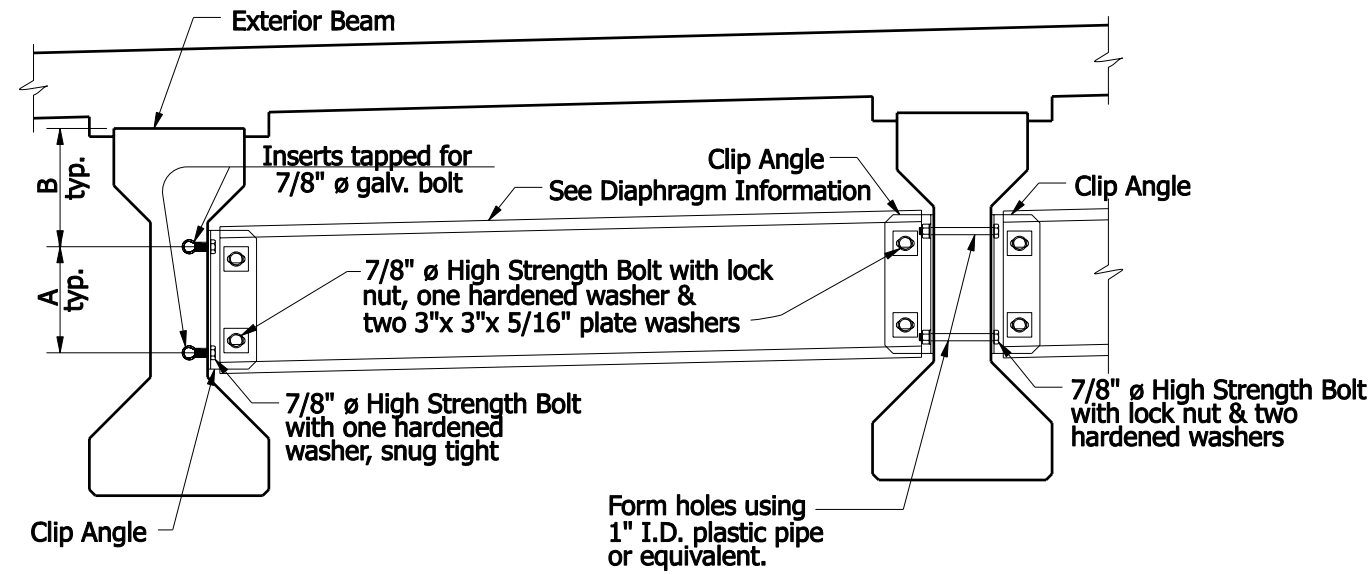


All Dimensions are in mm unless otherwise specified.

INDIANA DEPARTMENT OF TRANSPORTATION

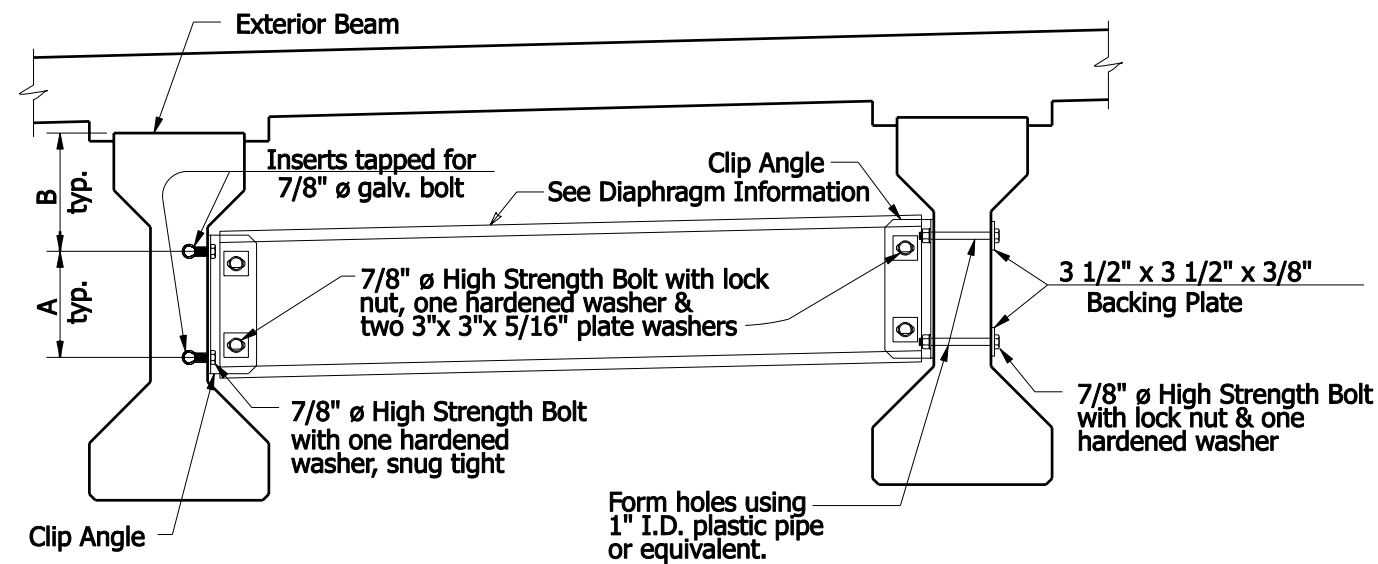
STEEL DIAPHRAGMS

INDIANA BULB-TEES, 1524 mm OR DEEPER



**INTERMEDIATE DIAPHRAGM**

*Typical for Square Structure*



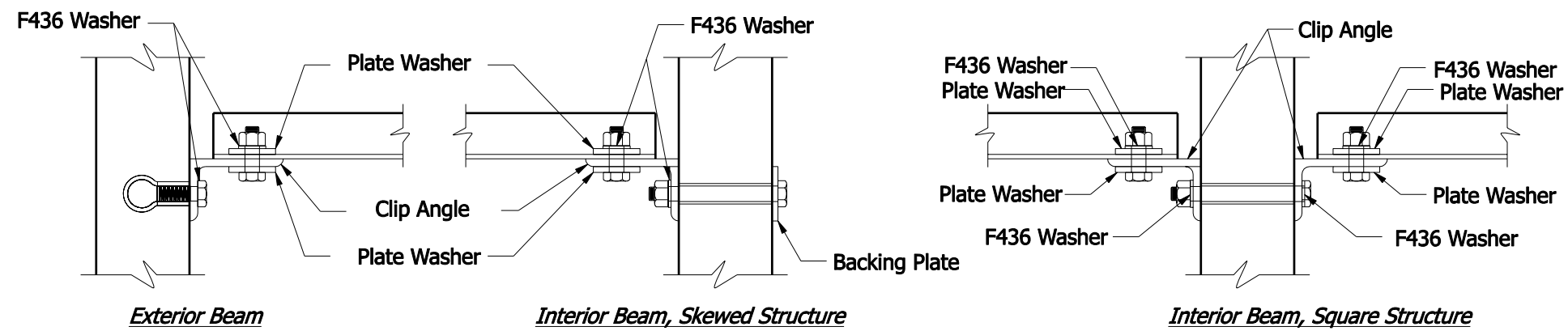
**INTERMEDIATE DIAPHRAGM**

*Typical for Skewed Structure*

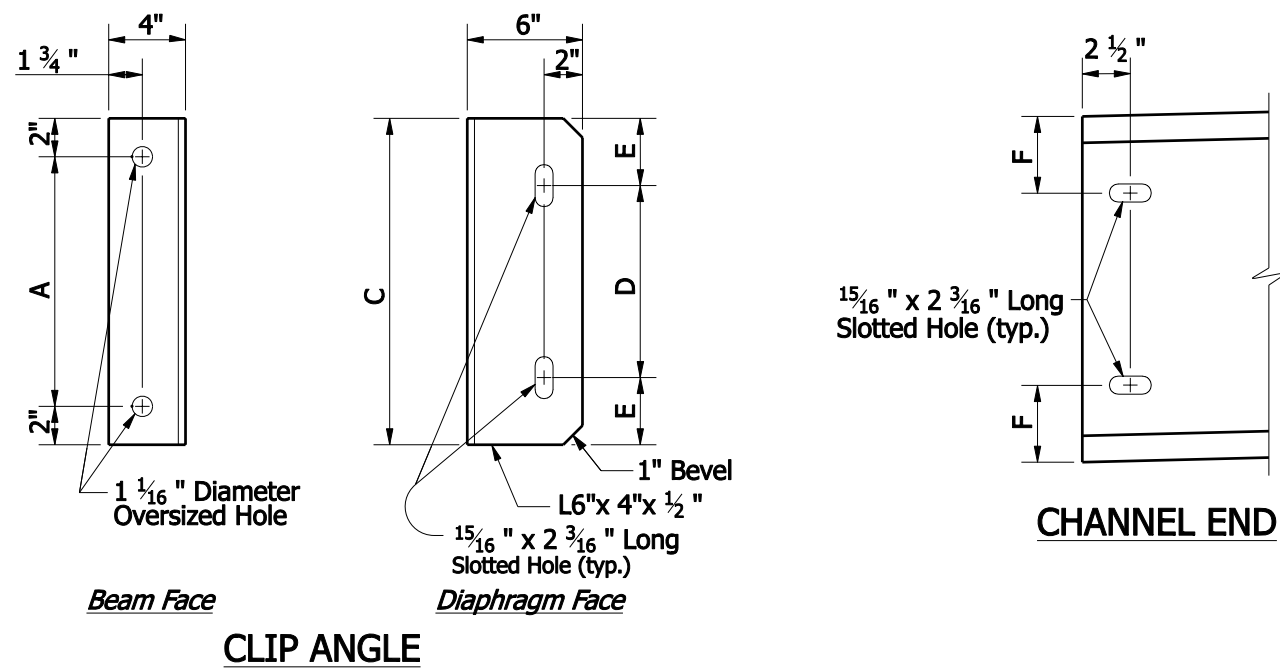
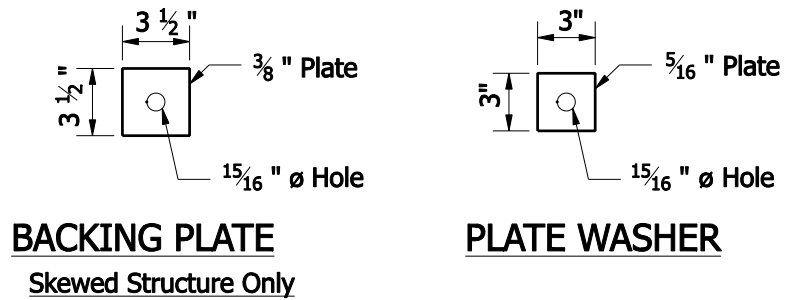
Diaphragm Information							
Beam Type	Dimension						Channel Type
	A	B	C	D	E	F	
Type II	9"	1'-0"	1'-1"	6"	3 1/2"	3"	C 12 x 20.7
Type III	1'-1"	1'-2 1/2"	1'-5"	10"	3 1/2"	4"	MC 18 x 42.7
Type IV	1'-4"	1'-5 1/2"	1'-8"	10"	5"	4"	MC 18 x 42.7

**NOTES:**

1. See Recurring Drawing E 707-B-173d 2 of 6 for connection details.

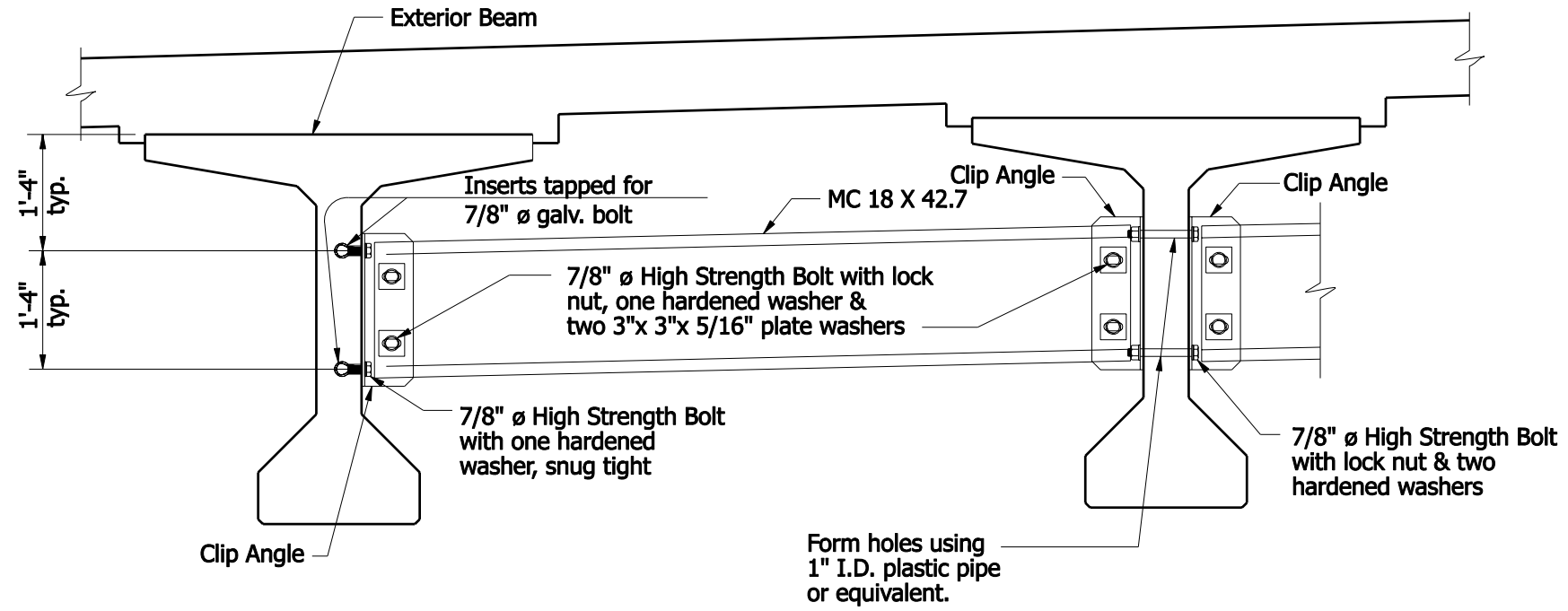


**CONNECTION DETAILS**

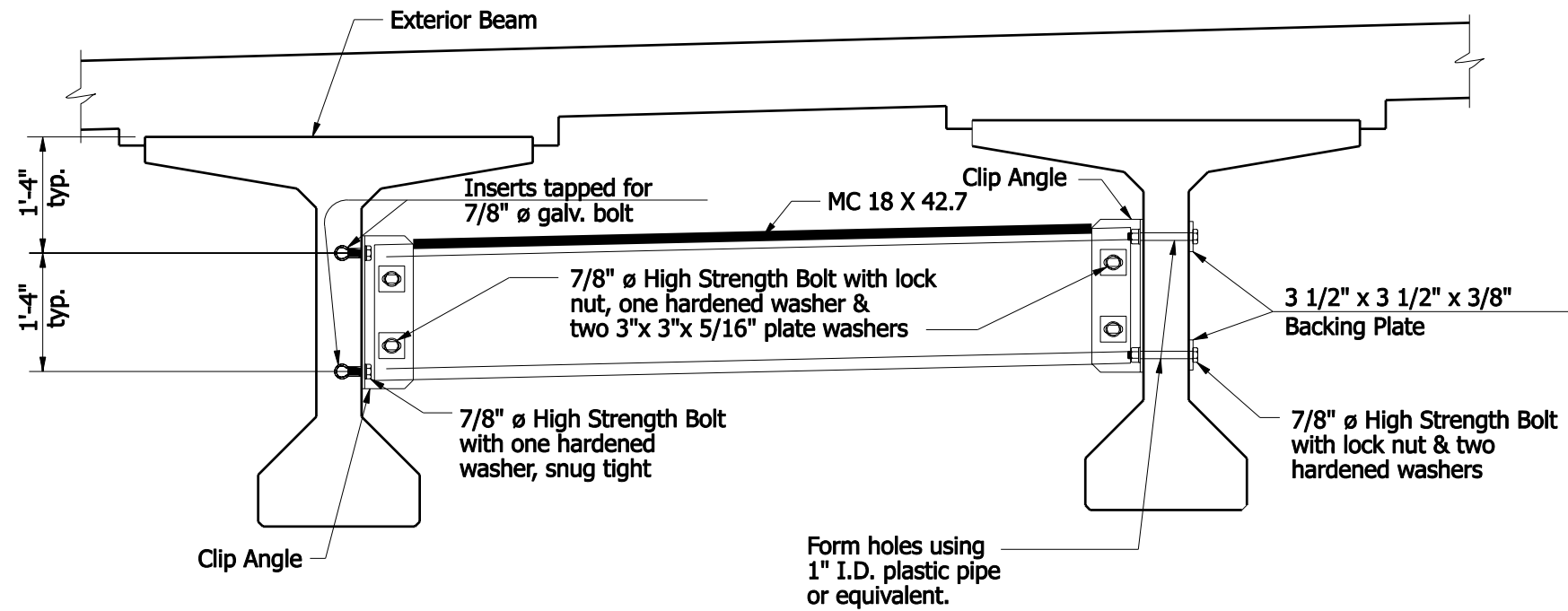


INDIANA DEPARTMENT OF TRANSPORTATION  
 STEEL DIAPHRAGMS  
 AASHTO I-BEAMS





**INTERMEDIATE DIAPHRAGM**  
*Typical for Square Structure*



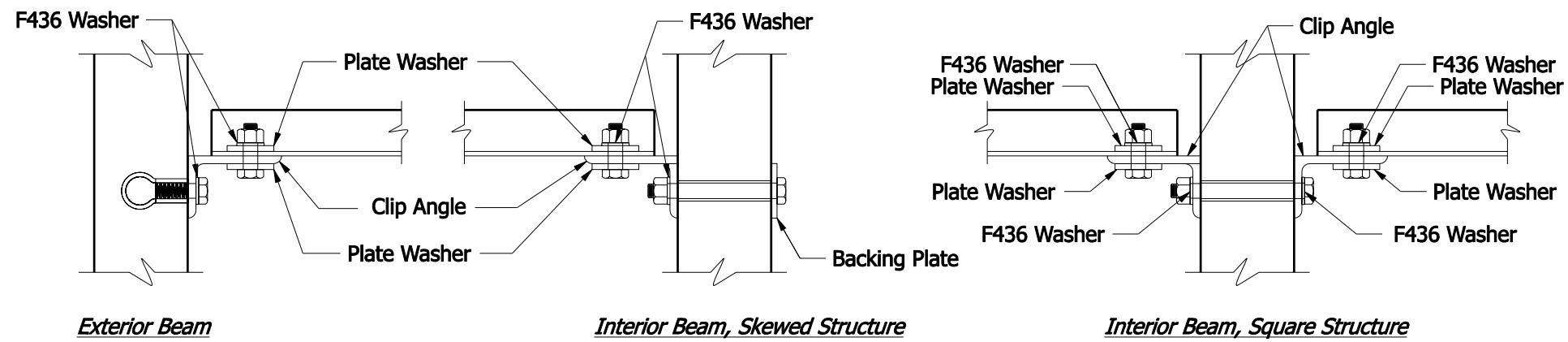
**INTERMEDIATE DIAPHRAGM**  
*Typical for Skewed Structure*

**NOTES:**

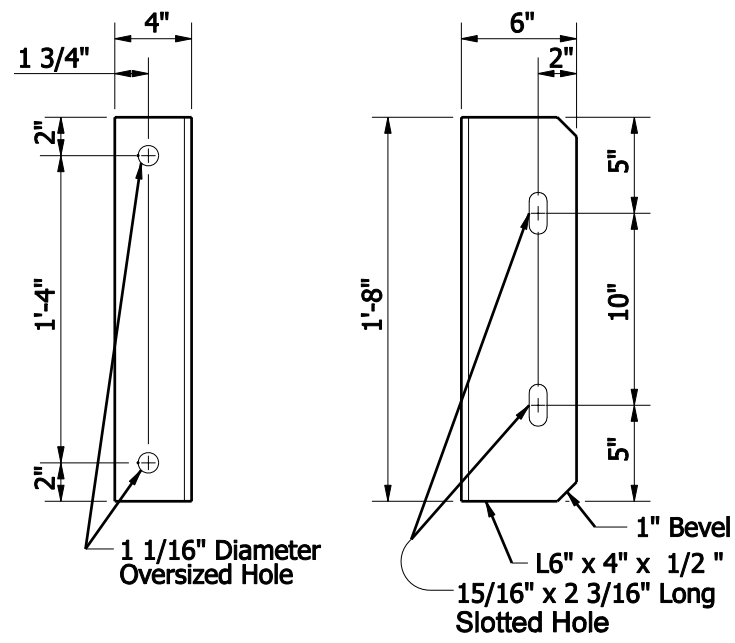
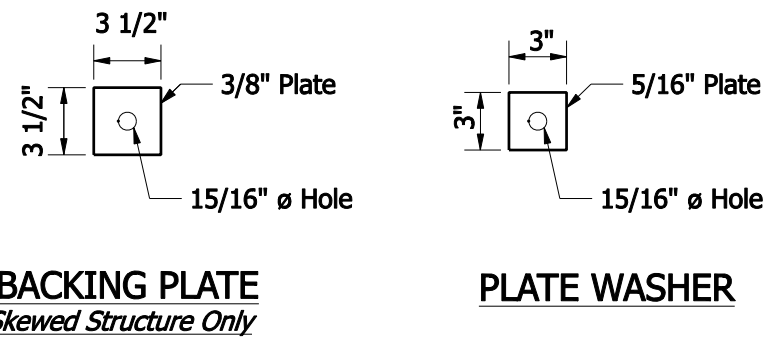
1. See Recurring Drawing E 707-B-173d 4 of 6 for connection details.

INDIANA DEPARTMENT OF TRANSPORTATION

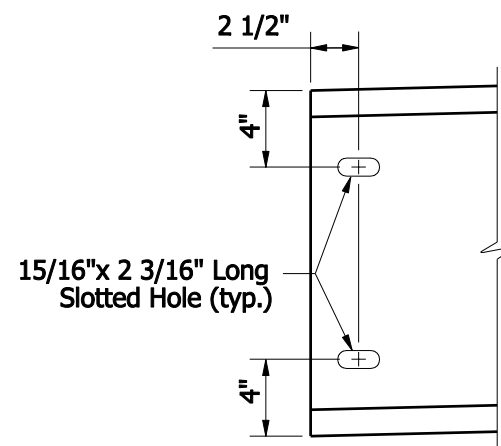
STEEL DIAPHRAGMS  
 INDIANA BULB-TEES, 54-IN. DEPTH



**CONNECTION DETAILS**

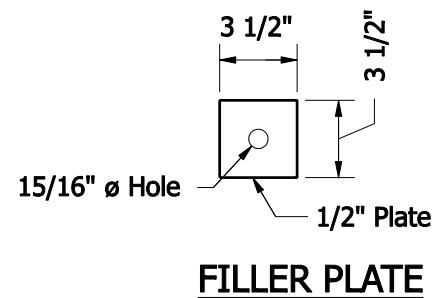
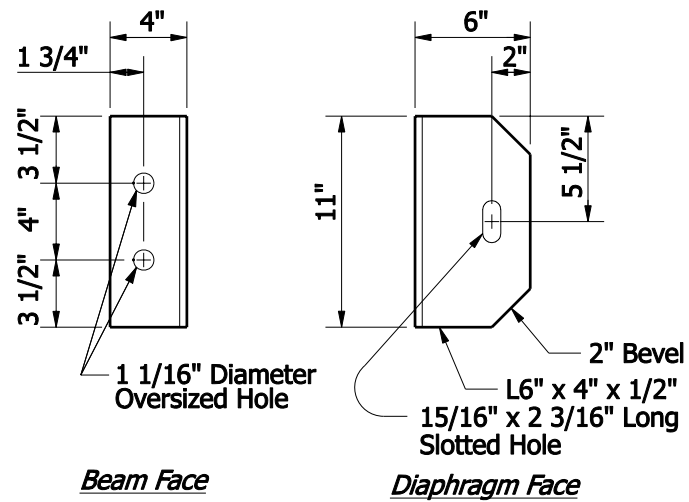
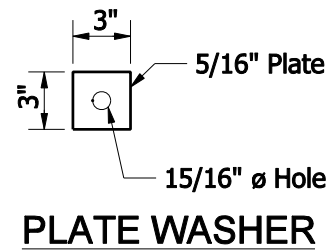
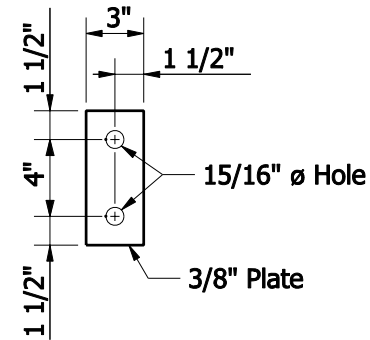
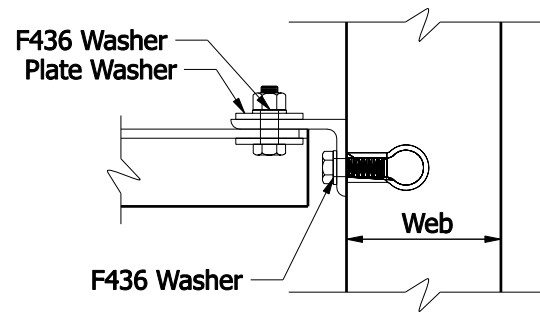
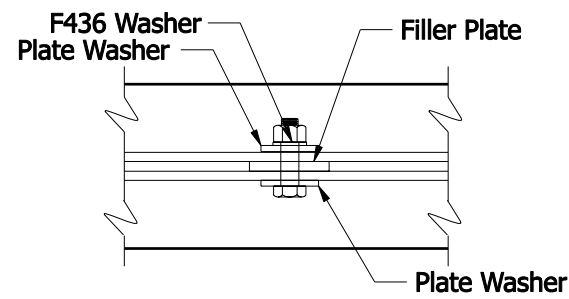
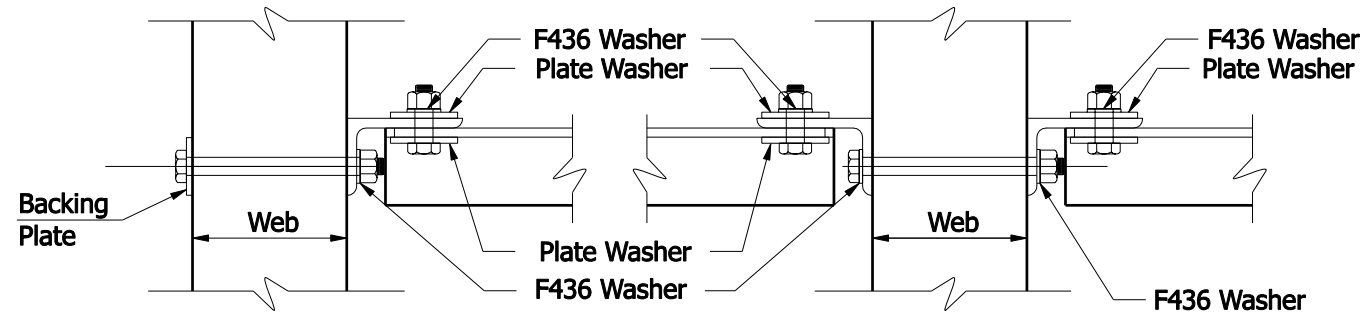


**CLIP ANGLE**



INDIANA DEPARTMENT OF TRANSPORTATION  
 STEEL DIAPHRAGMS  
 INDIANA BULB-TEES, 54-IN. DEPTH





INDIANA DEPARTMENT OF TRANSPORTATION

STEEL DIAPHRAGMS

INDIANA BULB-TEES, 60 IN. OR DEEPER