

**NOTES**

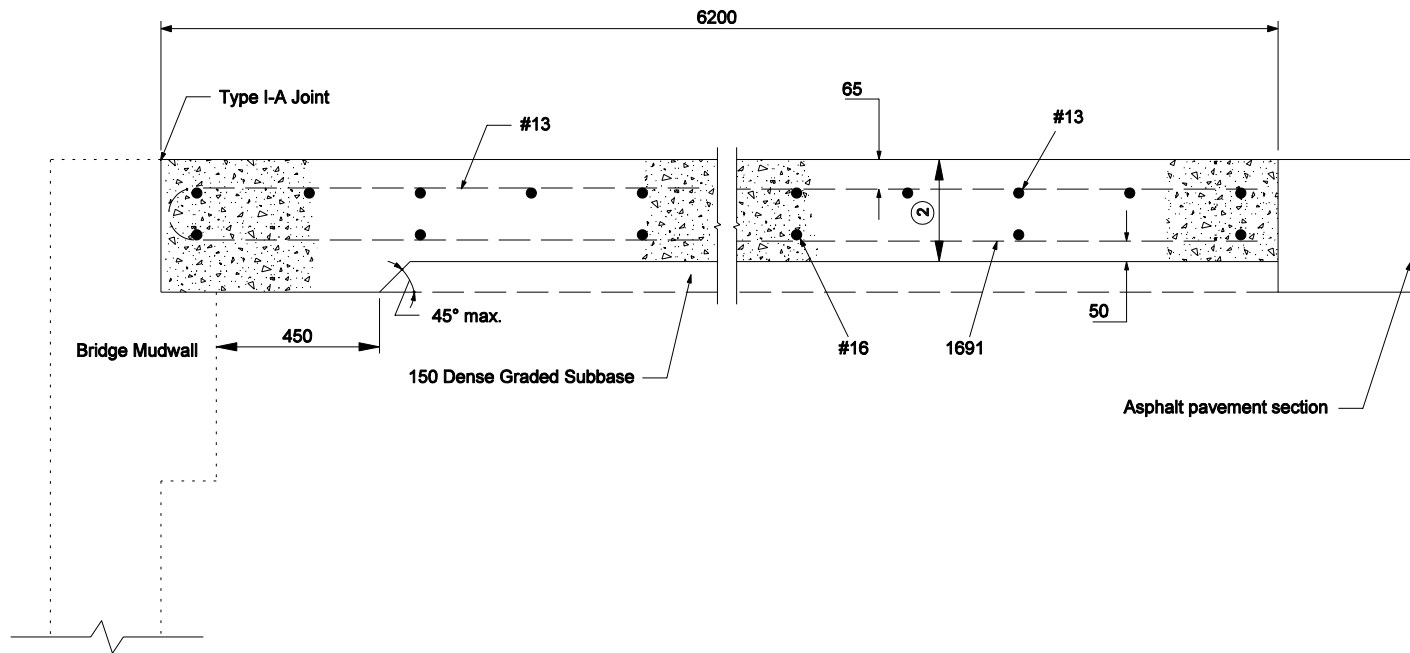
1. See Standard Drawing 609-RCBA-07 for joint location

All Dimension are in mm unless otherwise specified

INDIANA DEPARTMENT OF TRANSPORTATION

TYPE 1-A  
JOINT

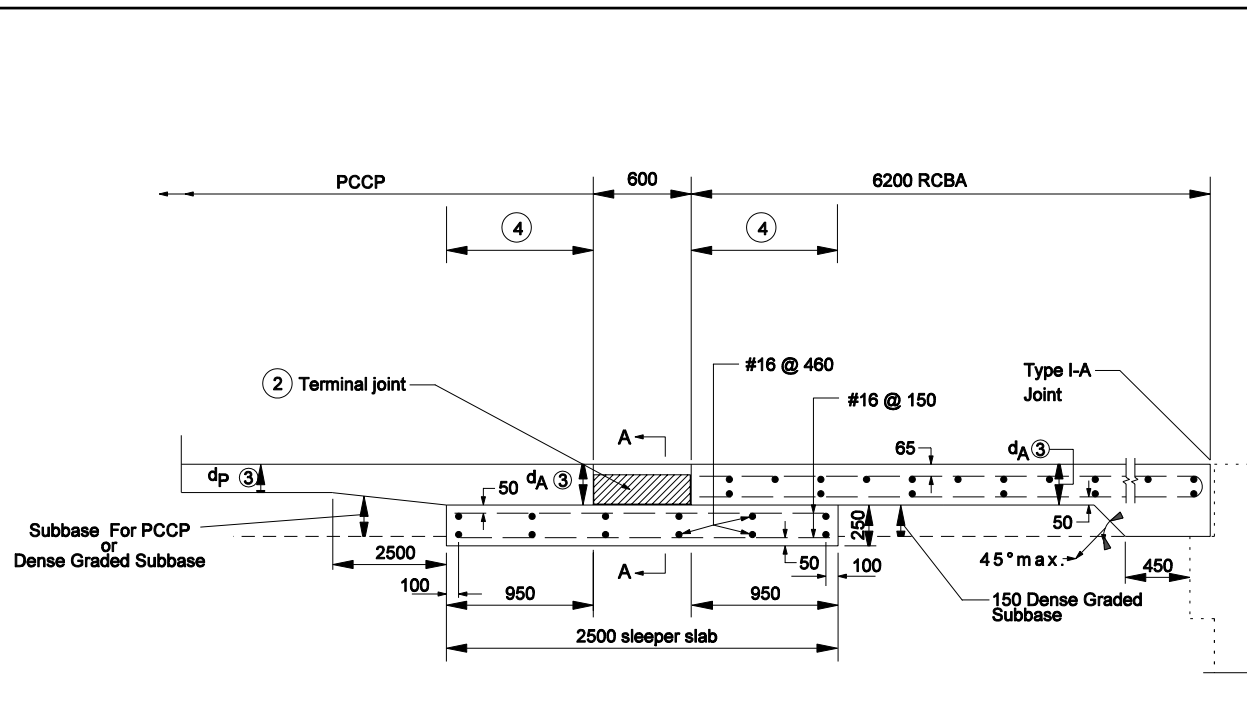
7-15-04



**NOTES**

1. For reinforcement details, see Standard Drawing 609-RCBA-03 for square RCBAs and Standard Drawing 609-RCBA-04 for skewed RCBAs.
- ② 250 if design year AADT < 1000  
300 if design year AADT ≥ 1000
3. All reinforcing bars shall be epoxy coated.
4. See Standard Drawings 609-RCBA-07 and 609-BRJT-01 for details of Type I-A Joint.

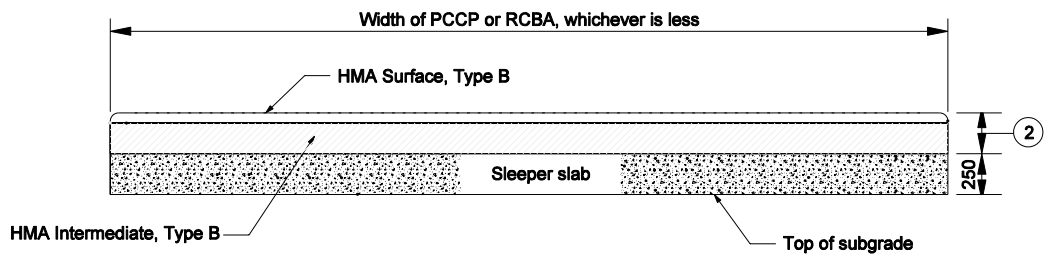
INDIANA DEPARTMENT OF TRANSPORTATION  
REINFORCED CONCRETE  
BRIDGE APPROACH FOR USE  
WITH ASPHALT PVMT.



**GENERAL NOTES**

1. For reinforcement details, see Standard Drawing 609-RCBA-03 for square RCBA's and Standard Drawing 609-RCBA-04 for skewed RCBA's.
- ② Terminal joint elevation shall match elevation of adjacent PCCP and RCBA.
- ③ Depth  $d_A$  must equal  $d_P$ . However, if  $d_P$  is less than 300,  $d_A$  must be 300.
- ④ Limits of polyethylene bond breaker.
5. All reinforcing bars in the reinforced concrete bridge approach shall be epoxy coated.
6. See Standard Drawing 609-RCBA-07 and 609-BRJT-01 for details of Type I-A Joint

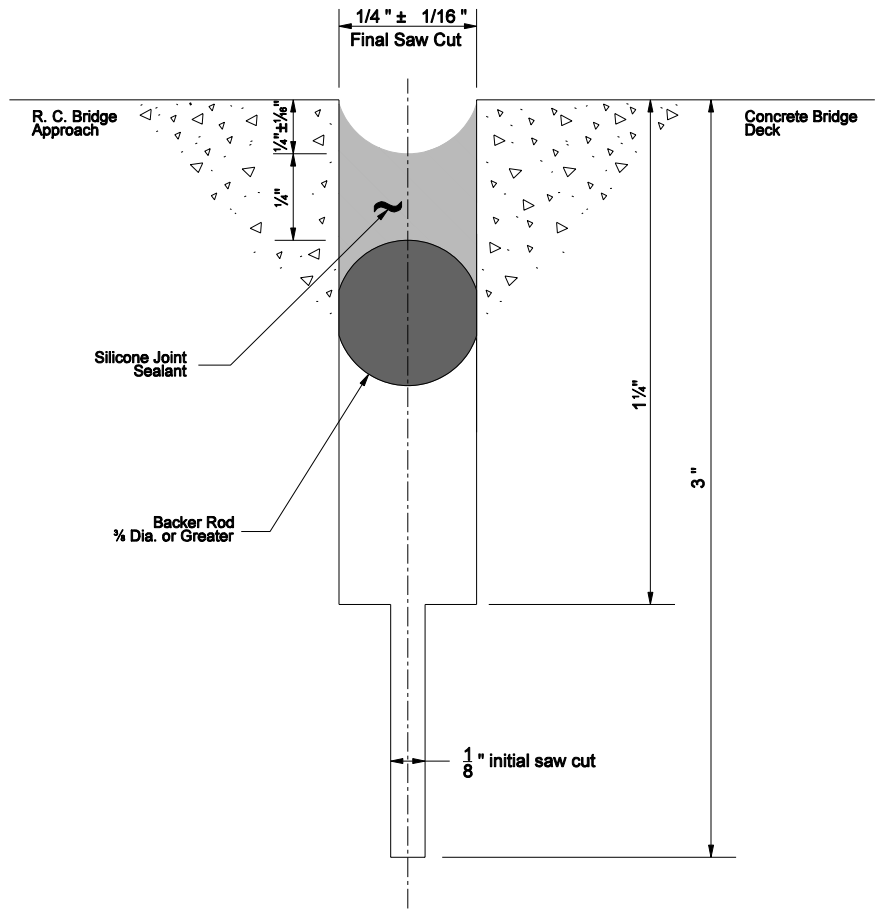
**TERMINAL JOINT FOR PCCP AT BRIDGE STRUCTURE**



**SECTION A-A**

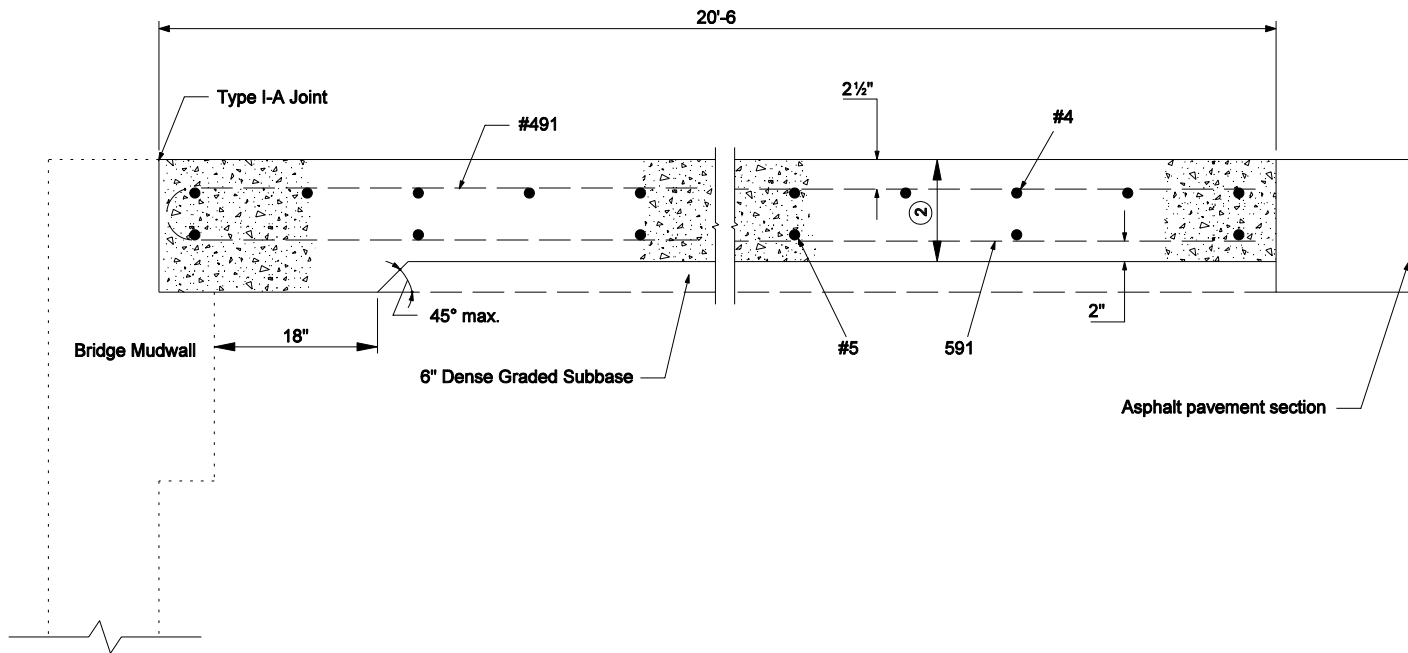
All Dimension are in mm unless otherwise specified

**INDIANA DEPARTMENT OF TRANSPORTATION**  
**REINFORCED CONCRETE BRIDGE**  
**APPROACH AND TERMINAL JOINT**  
**FOR USE WITH PCCP**



**NOTES**

1. See Standard Drawing E-609-RCBA-07 for joint location

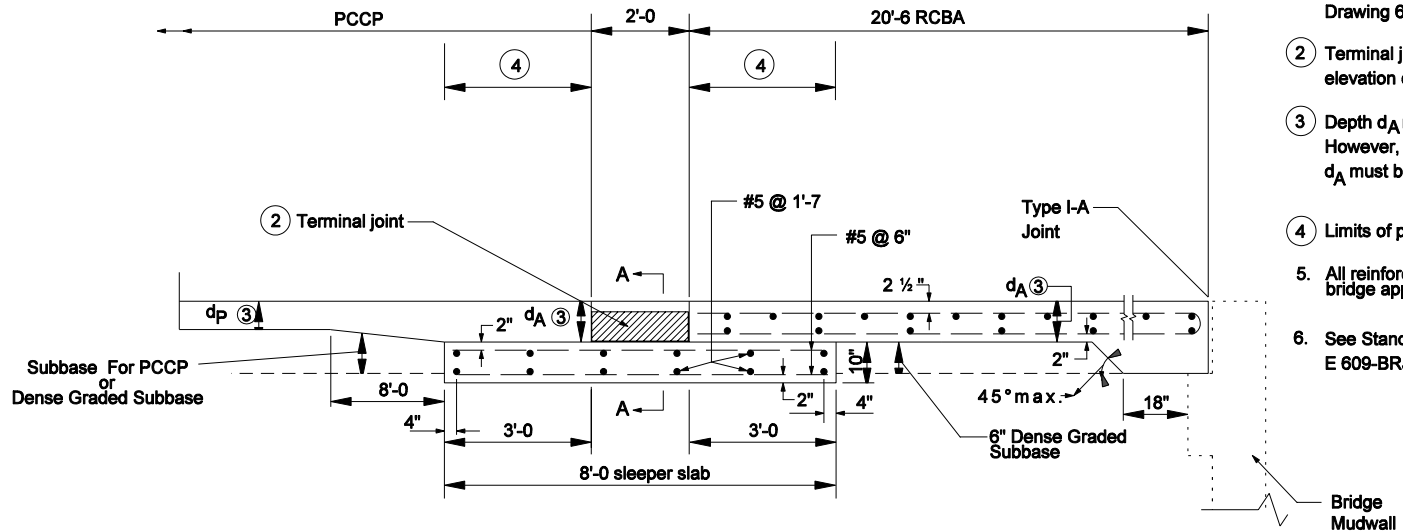


**NOTES**

1. For reinforcement details, see Standard Drawing E 609-RCBA-03 for square RCBA's and Standard Drawing E 609-RCBA-04 for skewed RCBA's.
2. 10" if design year AADT < 1000  
12" if design year AADT ≥ 1000
3. All reinforcing bars shall be epoxy coated.
4. See Standard Drawings E 609-RCBA-07 and E 609-BRJT-01 for details of Type I-A Joint.

INDIANA DEPARTMENT OF TRANSPORTATION  
REINFORCED CONCRETE  
BRIDGE APPROACH FOR USE  
WITH ASPHALT PVMT.

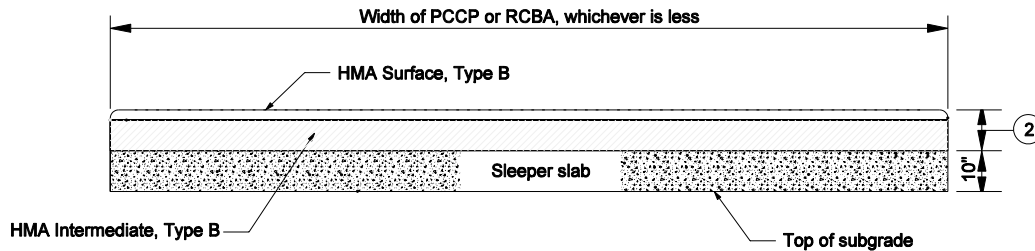
7-15-04



**GENERAL NOTES**

1. For reinforcement details, see Standard Drawing 609-RCBA-03 for square RCBA's and Standard Drawing 609-RCBA-04 for skewed RCBA's.
- ② Terminal joint elevation shall match elevation of adjacent PCCP and RCBA.
- ③ Depth  $d_A$  must equal  $d_p$ . However, if  $d_p$  is less than 12 in.,  $d_A$  must be 12 in.
- ④ Limits of polyethylene bond breaker.
5. All reinforcing bars in the reinforced concrete bridge approach shall be epoxy coated.
6. See Standard Drawing E 609-RCBA-07 and E 609-BRJT-01 for details of Type I-A Joint

**TERMINAL JOINT FOR PCCP AT BRIDGE STRUCTURE**



**SECTION A-A**

INDIANA DEPARTMENT OF TRANSPORTATION  
**REINFORCED CONCRETE BRIDGE  
 APPROACH AND TERMINAL JOINT  
 FOR USE WITH PCCP**