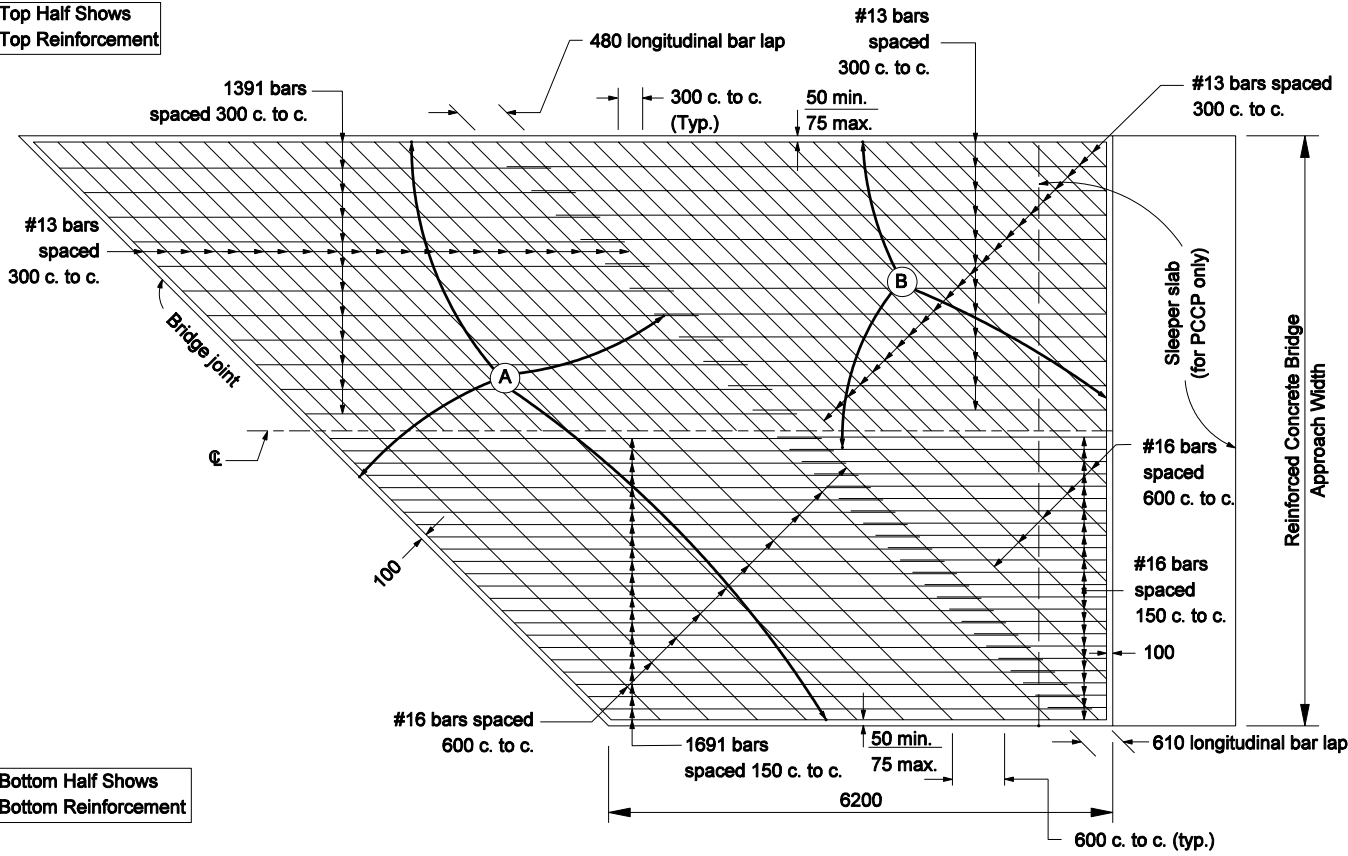


609-RCBA-04

Top Half Shows
Top Reinforcement

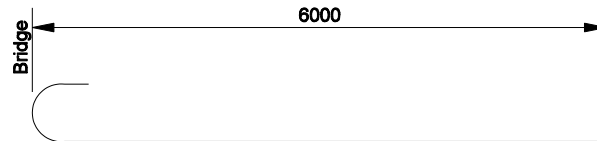


Bottom Half Shows
Bottom Reinforcement

NOTES

1. Area (A) includes all bars of equal length.
2. Area (B) includes all bars of unequal length.
3. See Standard Drawing 609-RCBA-06 for Bill of Materials.
4. All reinforcing bars shall be epoxy coated.

REINFORCEMENT DETAIL FOR SKEWED APPROACH



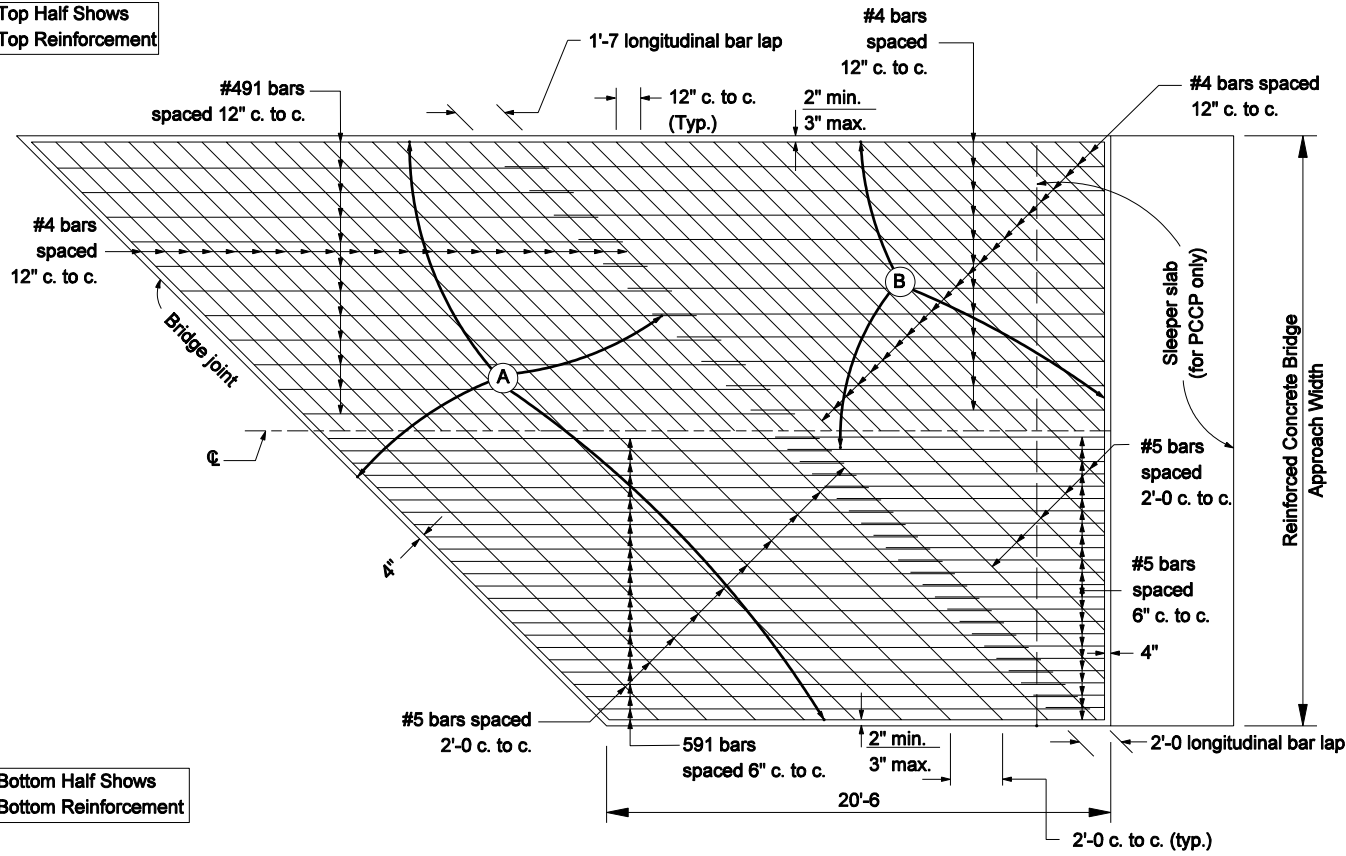
1391 x 6260
1691 x 6280

All Dimension are in mm unless otherwise specified

INDIANA DEPARTMENT OF TRANSPORTATION

REINFORCED CONCRETE
BRIDGE APPROACH

Top Half Shows
Top Reinforcement

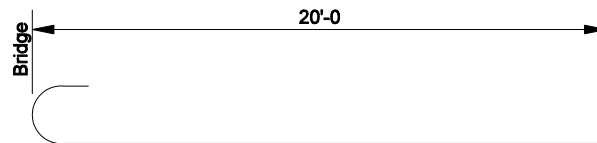


Bottom Half Shows
Bottom Reinforcement

NOTES

1. Area (A) includes all bars of equal length.
2. Area (B) includes all bars of unequal length.
3. See Standard Drawing E 609-RCBA-06 for Bill of Materials.
4. All reinforcing bars shall be epoxy coated.

REINFORCEMENT DETAIL FOR SKEWED APPROACH



591 x 20'-7
491 x 20'-6

INDIANA DEPARTMENT OF TRANSPORTATION

**REINFORCED CONCRETE
BRIDGE APPROACH**