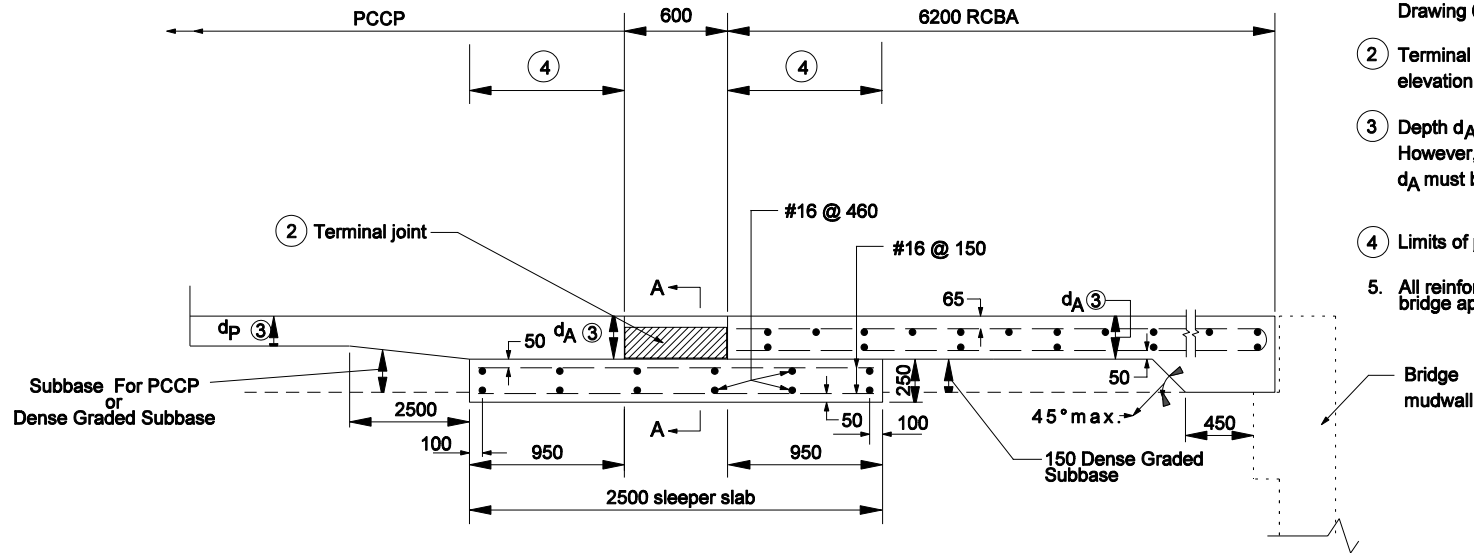
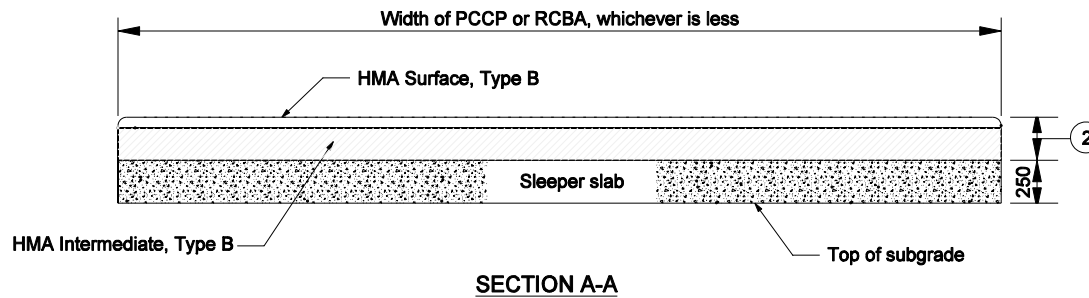


**GENERAL NOTES**

1. For reinforcement details, see Standard Drawing 609-RCBA-03 for square RCBA's and Standard Drawing 609-RCBA-04 for skewed RCBA's.
- 2 Terminal joint elevation shall match elevation of adjacent PCCP and RCBA.
- 3 Depth  $d_A$  must equal  $d_P$ . However, if  $d_P$  is less than 300,  $d_A$  must be 300.
- 4 Limits of polyethylene bond breaker.
5. All reinforcing bars in the reinforced concrete bridge approach shall be epoxy coated.



**TERMINAL JOINT FOR PCCP AT BRIDGE STRUCTURE**



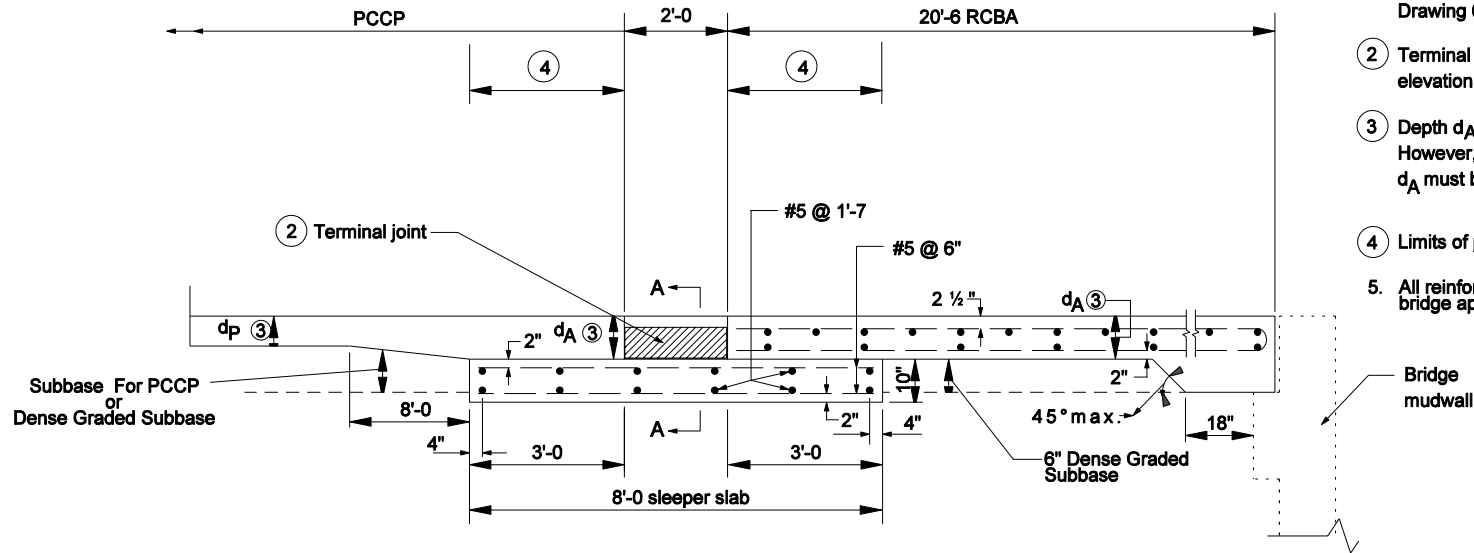
All Dimension are in mm unless otherwise specified

INDIANA DEPARTMENT OF TRANSPORTATION

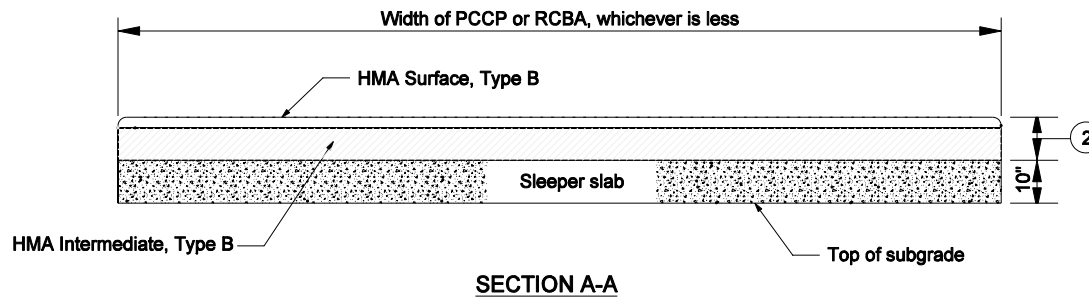
REINFORCED CONCRETE BRIDGE  
APPROACH AND TERMINAL JOINT  
FOR USE WITH PCCP

**GENERAL NOTES**

1. For reinforcement details, see Standard Drawing 609-RCBA-03 for square RCBAs and Standard Drawing 609-RCBA-04 for skewed RCBAs.
- 2 Terminal joint elevation shall match elevation of adjacent PCCP and RCBA.
- 3 Depth  $d_A$  must equal  $d_P$ . However, if  $d_P$  is less than 12 in.,  $d_A$  must be 12 in.
- 4 Limits of polyethylene bond breaker.
5. All reinforcing bars in the reinforced concrete bridge approach shall be epoxy coated.



**TERMINAL JOINT FOR PCCP AT BRIDGE STRUCTURE**



**REINFORCED CONCRETE BRIDGE APPROACH AND TERMINAL JOINT**

INDIANA DEPARTMENT OF TRANSPORTATION

REINFORCED CONCRETE BRIDGE APPROACH AND TERMINAL JOINT FOR USE WITH PCCP