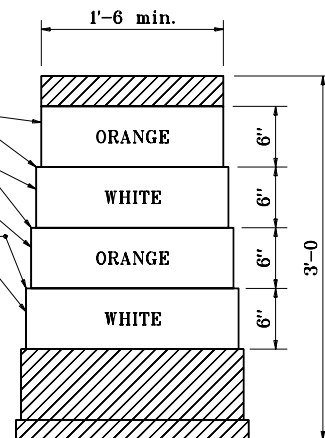
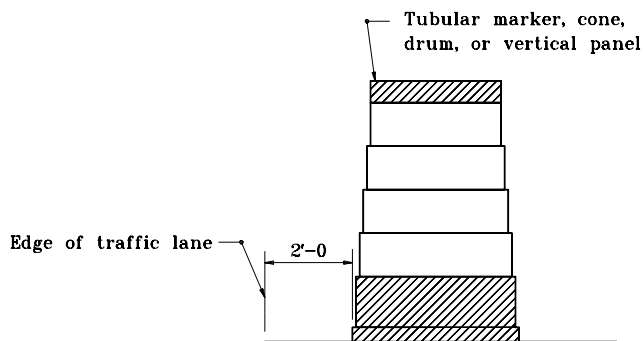


VERTICAL PANEL

Reflectorized sheeting



DRUM



PLACEMENT OF CHANNELIZING DEVICES

GENERAL NOTES

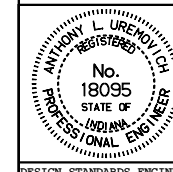
1. Unless otherwise specified, channelizing devices shall be spaced as shown on Standard Drawing E 801-TCLG-01.
- (2) Reflectorized bands may be omitted from cones for lane closures during daylight hours.
- (3) For vertical panels greater than 3 ft in height, the width of the stripes shall be 6 in.
4. Where vertical panels are used to separate two-way traffic, back-to-back panels shall be used.
- (5) Vertical panels used on an expressway, freeway or other roadway with posted speed limit of 40 mph or greater shall have a minimum reflective panel area of 270 sq. in.
- (6) Cones shall have a minimum height of 2'-4 when used at night.
- (7) The maximum distance between the edges of adjacent reflective sheeting strips shall be 2 in.

INDIANA DEPARTMENT OF TRANSPORTATION

CHANNELIZING DEVICES

JANUARY 2000

STANDARD DRAWING NO. E 801-TCDV-01



/s/ Anthony L. Uremovich 1-03-00
DESIGN STANDARDS ENGINEER DATE

/s/ Donald W. Lucas 1-03-00
CHIEF HIGHWAY ENGINEER DATE

DESIGN STANDARDS ENGINEER