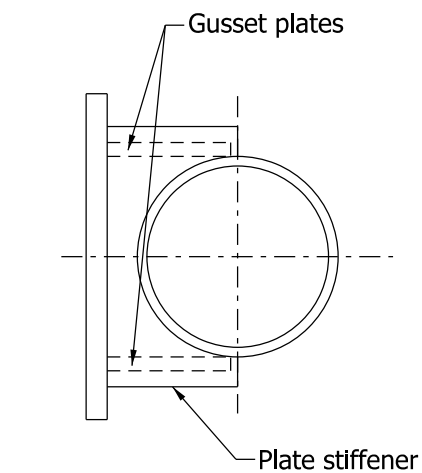
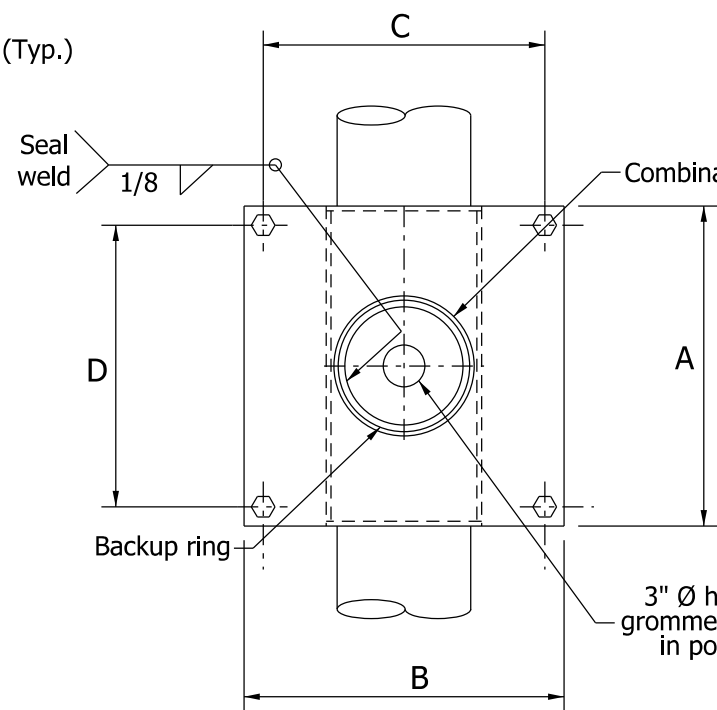


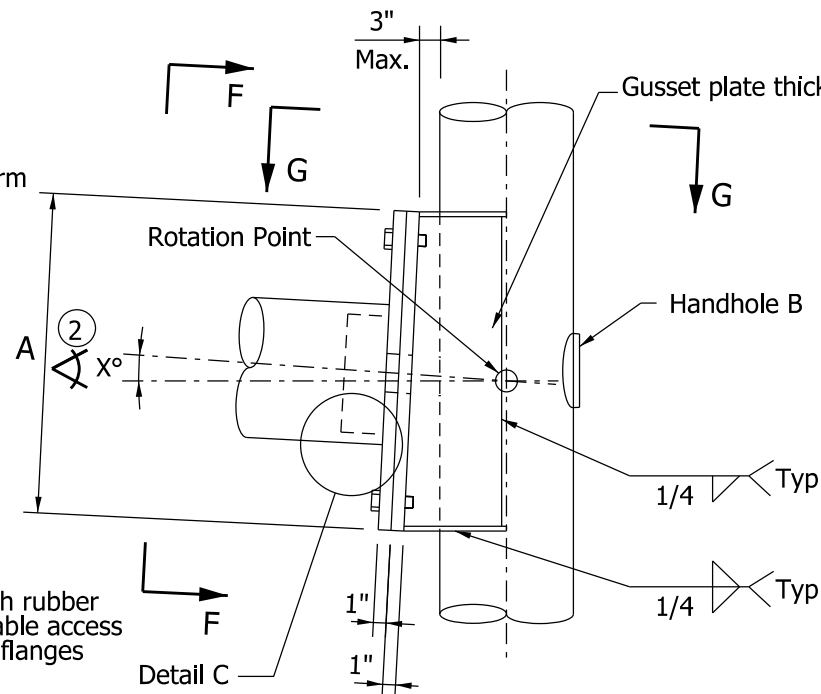
ELEVATION OF GUSSET PLATES



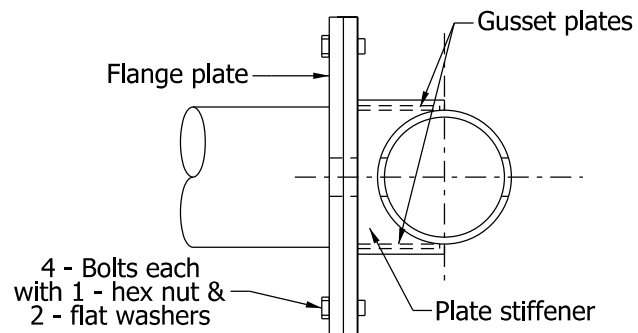
TOP OF GUSSET PLATES



SECTION F-F



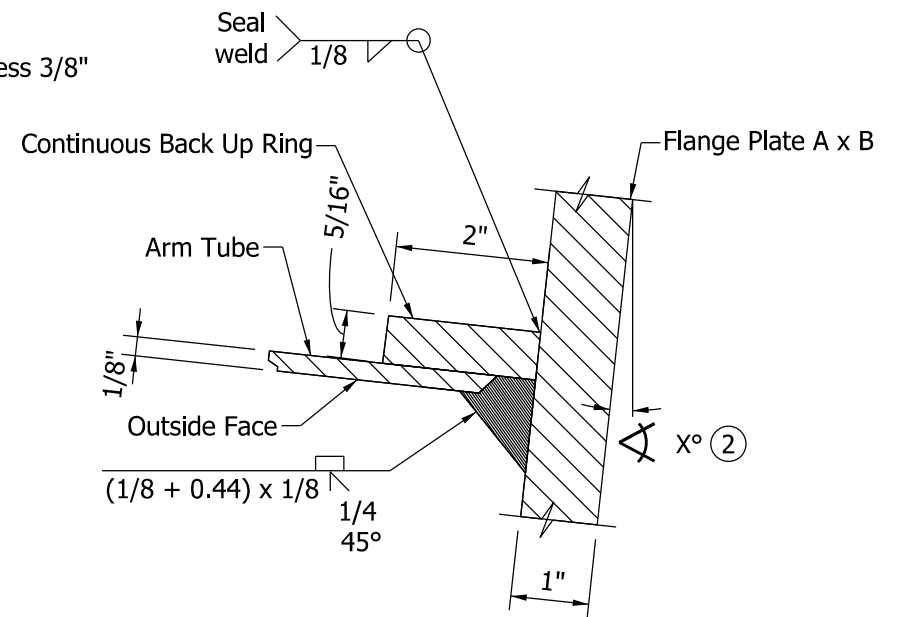
ELEVATION



SECTION G-G

NOTES:

1. See Standard Drawing E 805-TSCS-05 for handhole details.
- 2 The required combination arm rise shall be built into the gusset plate at the angle X. The angle X is described as $\arctan R/L$, where R is the combination arm rise and L is the arm length. Both R and L vary and are listed in the Arm Dimensions Table on Standard Drawing E 805-TSCS-02.



DETAIL C - ARM WELD

COMBINATION ARM CONNECTION DETAIL

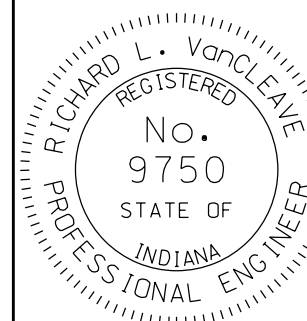
| PLATES AND BOLTS FOR COMBINATION ARM CANTILEVER | | | | |
|-------------------------------------------------|--------------------|--------------------|------------------------|--------------------------|
| ARM LENGTH | FLANGE PLATE A x B | BOLT PATTERN C x D | FLANGE PLATE THICKNESS | BOLT |
| 15' TO 35' | 20" x 20" | 17" x 17" | 1" | 7/8" - 9 UNC x 3.5" LONG |
| >35' TO 60' | 25" x 25" | 22" x 22" | 1" | 7/8" - 9 UNC x 3.5" LONG |

INDIANA DEPARTMENT OF TRANSPORTATION

TRAFFIC SIGNAL CANTILEVER STRUCTURE
COMBINATION ARM CONNECTION DETAILS

SEPTEMBER 2012

STANDARD DRAWING NO. E 805-TSCS-10



/s/ Richard L. VanCleave 09/04/12

SUPERVISOR, ROADWAY STANDARDS DATE

/s/ Mark A. Miller 09/04/12

CHIEF ENGINEER DATE