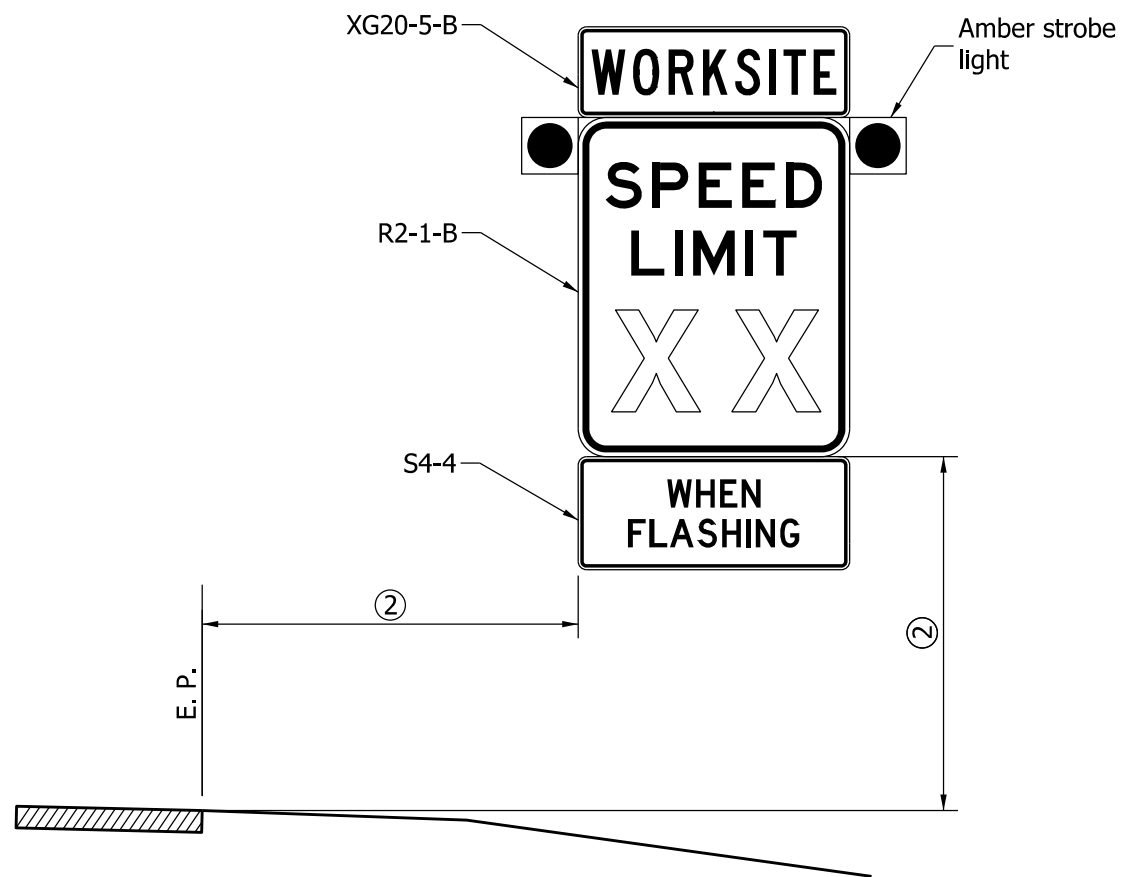


REDUCED SPEED ADVANCE  
WARNING SIGN ASSEMBLY



WORKSITE SPEED LIMIT  
SIGN ASSEMBLY

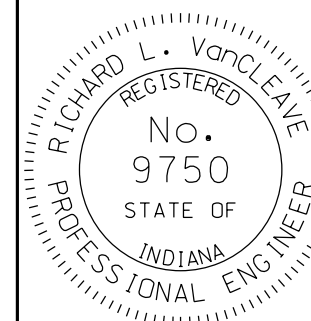
**NOTES:**

1. If not trailer mounted, signs and supports shall satisfy NCHRP 350 crash evaluation criteria.
2. See Standard Drawing 801-TCDV-05 for lateral and vertical placement.
3. Advance warning sign speed limit shall match that on worksite speed limit sign.
4. The worksite speed limit shall be at least 10 mph below the posted speed limit for the roadway under construction.
5. Sign series shown is for freeway or expressway application.

INDIANA DEPARTMENT OF TRANSPORTATION

WORKSITE SPEED LIMIT SIGN ASSEMBLY  
FOR INTERMITTENT USE  
(When Workers Present)  
SEPTEMBER 2012

STANDARD DRAWING NO. E 801-TCDV-10



*/s/ Richard L. VanCleave* 09/04/12  
SUPERVISOR, ROADWAY STANDARDS DATE

*/s/ Mark A. Miller* 09/04/12  
CHIEF ENGINEER DATE