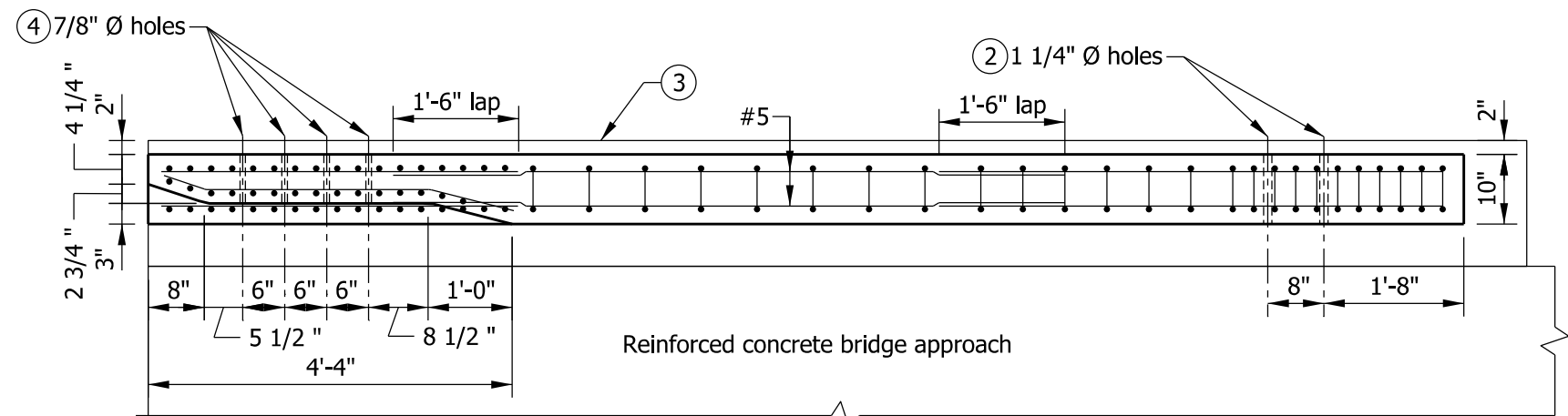


ELEVATION



PLAN

NOTES

1. See Standard Drawing E 706-TTPP-02 for sections and reinforcing bar diagrams.
2. Holes for attachment of guardrail transition type TGB. See Standard Drawing E 706-CBRT-04 for details.
3. RCBA extension for bridge railing transition type TPF-1. See Standard Drawing E 609-TBAE-01 for details.
4. Holes for attachment of steel bridge railing type PF-1. See Standard Drawing E 706-BRPP-01 for details.

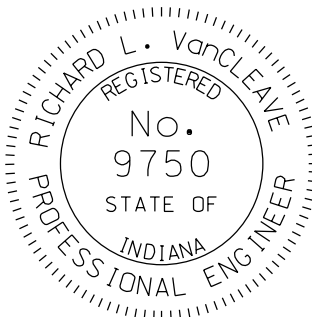
| BILL OF MATERIALS | | | |
|---|-------------|--------|---------|
| Quantities are for one concrete bridge railing transition type TPF-1. | | | |
| EPOXY-COATED REINFORCING STEEL | | | |
| MARK OR SIZE | NO. OF BARS | LENGTH | WEIGHT |
| 5801 | 25 | 5'-4" | |
| 5814 | 17 | 3'-0" | |
| 5820 | 17 | 3'-1" | |
| 5822 | 50 | 3'-7" | |
| 5825 | 17 | 4'-8" | |
| 5832 | 3 | 4'-3" | |
| #5 | 4 | 10'-9" | |
| #5 | 6 | 8'-0" | |
| #5 | 14 | 6'-0" | |
| #5 | 4 | 4'-3" | |
| Total Epoxy-Coated Reinforcing Steel | | | 730 LBS |
| MISCELLANEOUS | | | |
| Concrete, Class C | | | 1.5 CYS |
| Surface Seal | | | 119 SFT |

INDIANA DEPARTMENT OF TRANSPORTATION

CONCRETE BRIDGE RAILING
TRANSITION, TPF-1

SEPTEMBER 2012

STANDARD DRAWING NO. E 706-TTPP-01



/s/ Richard L. VanCleave 09/04/12

SUPERVISOR, ROADWAY STANDARDS DATE

/s/ Mark A. Miller 09/04/12

CHIEF ENGINEER DATE