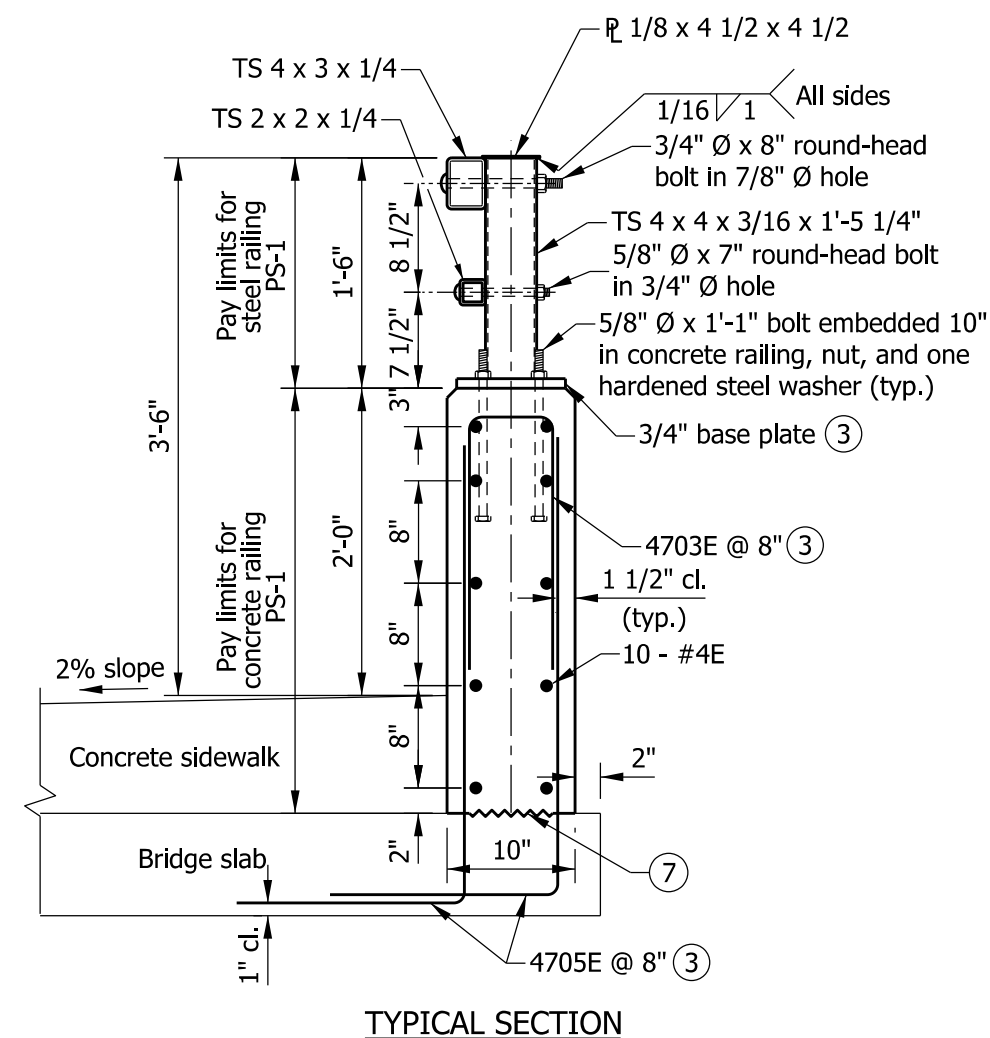


RAIL END DETAILS

QUANTITIES FOR ONE RUNNING FOOT OF RAILING	
Concrete, class C	2.30 CFT
Reinforcing bars	19.6 LBS



NOTES

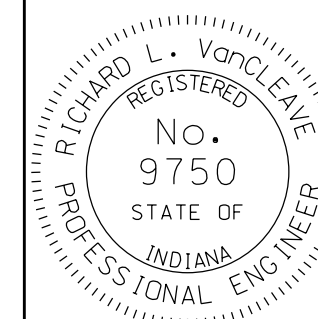
- See Standard Drawing E 706-BRPP-06 for General Notes (1).
- See Standard Drawing E 706-BRPP-05 for rail tube details and rail splice details.
- See Standard Drawing E 706-BRPP-06 for base plate detail and reinforcing-bar bends.
- Concrete bridge railing transition, TPS-1. See Standard Drawings E 706-TTPP-05 and -06 for details.
- 3/4" Ø x 11 1/2" round-head bolt in 7/8" Ø hole. Hole shall be slotted as required for expansion.
- 5/8" Ø x 10 1/2" round-head bolt in 3/4" Ø hole. Hole shall be slotted as required for expansion.
- Construction joint type A. See Standard Drawing E 702-CJTA-01 for details.

INDIANA DEPARTMENT OF TRANSPORTATION

RAILING, PS-1

SEPTEMBER 2012

STANDARD DRAWING NO. E 706-BRPP-03



/s/ Richard L. VanCleave 09/04/12
SUPERVISOR, ROADWAY STANDARDS DATE

/s/ Mark A. Miller 09/04/12
CHIEF ENGINEER DATE