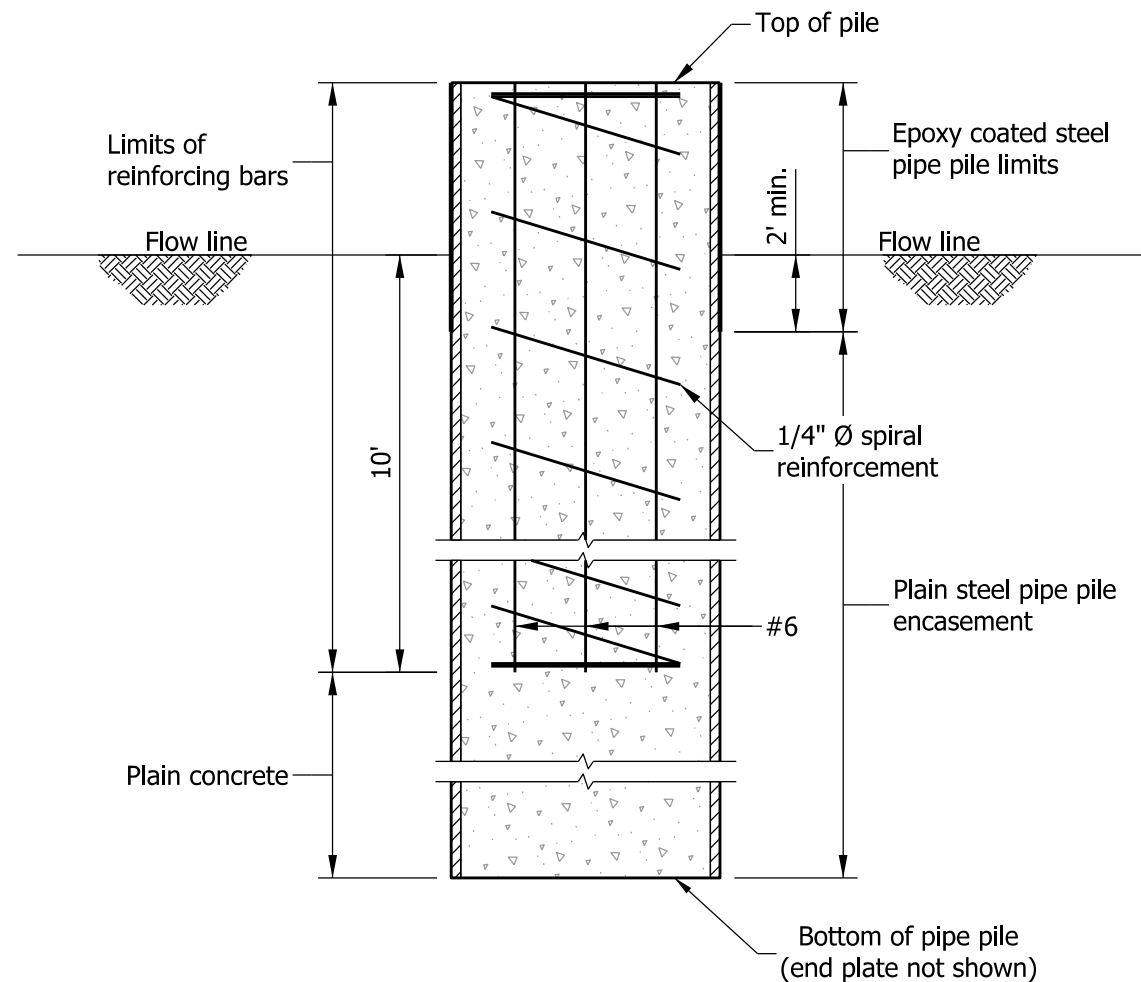
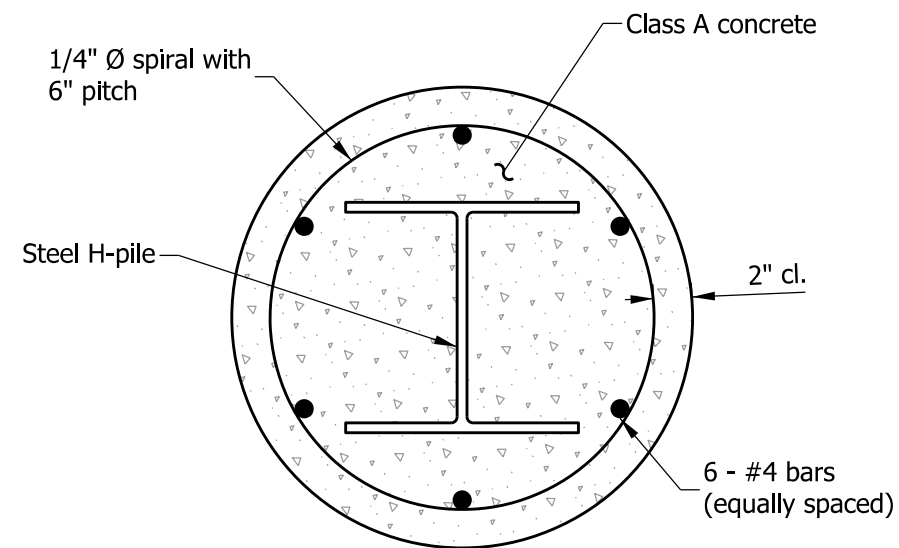


**REINFORCED-CONCRETE FILLED EPOXY-COATED  
STEEL PIPE PILE ENCASEMENT PLAN VIEW**



**SECTION A-A**



**STEEL H - PILES  
REINFORCED-CONCRETE ENCASEMENT PLAN VIEW**

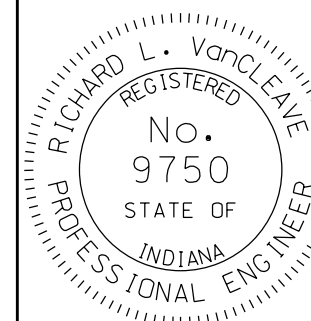
TABLE OF MATERIALS			
Steel H-Pile designation	Minimum pile diameter	Reinforcing bars, lb/ft	Class A concrete, yd <sup>3</sup> /ft
HP 14	2'-3"	5.8	0.12
HP 12	2'-0"	5.6	0.10
HP 10	1'-9"	5.4	0.08

INDIANA DEPARTMENT OF TRANSPORTATION

REINFORCED-CONCRETE  
ENCASEMENT FOR PILES

SEPTEMBER 2012

STANDARD DRAWING NO. E 701-BPIL-01



/s/ Richard L. VanCleave 09/04/12  
SUPERVISOR, ROADWAY STANDARDS DATE

/s/ Mark A. Miller 09/04/12  
CHIEF ENGINEER DATE