

NOTES:

1. See Standard Drawings E 610-DRIV-13 for General Notes and additional Legend.
2. See Standard Drawing E 610-DRIV-12 for sections A-A, B-B and C-C.
3. Joint Placement Detail should be used with Class I, III and VII drives.
- ④ See Standard Drawing E 604-SDWK-01 or E 604-SDWK-02 for sidewalk elevation transition details.
- ⑤ See Standard Drawing E 610-DRIV-16 for details and corners.
6. See Standard Drawing 503-CCPJ-02 for longitudinal joint details.

LEGEND

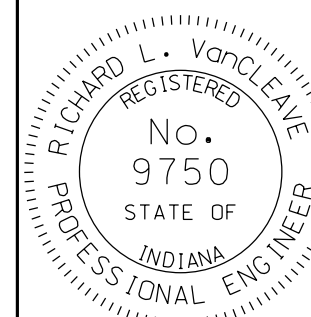
- [M] HMA for Approaches:
165#/syd HMA Surface Type B on
275#/syd HMA Intermediate Type B on
880#/syd HMA base, Type B on
subgrade treatment Type IIIA
or
PCCP for Approaches, 9 in., on
subgrade treatment Type IIIA
- [] Sidewalk elevation transition
- [S] For type and thickness equivalent to surface in place, see plans.

INDIANA DEPARTMENT OF TRANSPORTATION

CLASS VII DRIVE AND JOINT PLACEMENT DETAIL

SEPTEMBER 2012

STANDARD DRAWING NO. E 610-DRIV-07



/s/ Richard L. VanCleave 09/04/12

SUPERVISOR, ROADWAY STANDARDS DATE

/s/ Mark A. Miller 09/04/12

CHIEF ENGINEER DATE