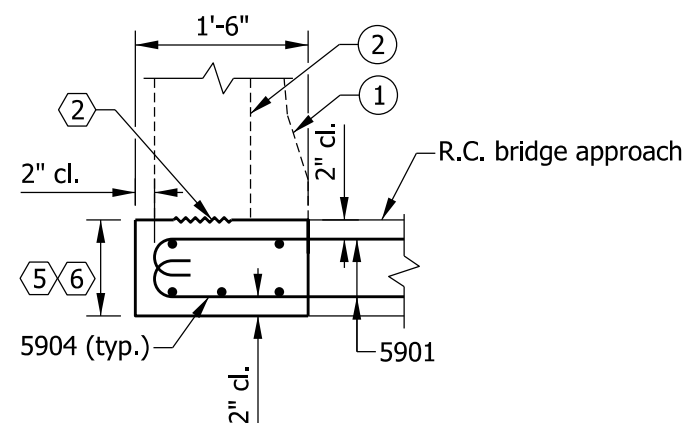
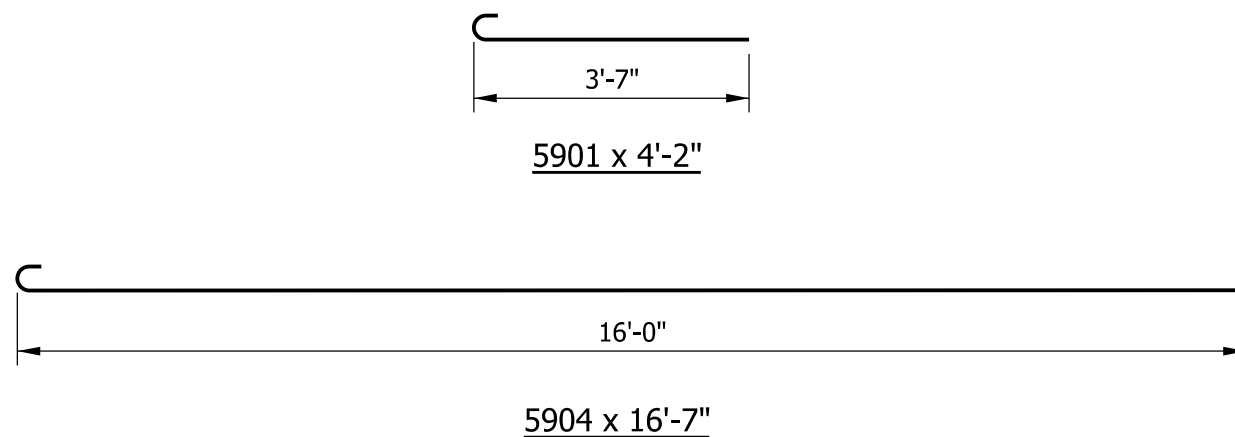


SECTION F-F



SECTION E-E



NOTES

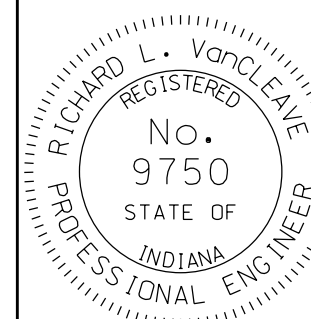
- See Standard Drawings E 706-TTFC-01 through -03 for concrete bridge railing transition type TFC details.
- See Standard Drawings E 706-TTPP-01 and -02 for concrete bridge railing transition type TPF-1 details.
See Standard Drawings E 706-TTPP-03 and -04 for concrete bridge railing transition type TPF-2 details.
See Standard Drawings E 706-TTPP-05 and -06 for concrete bridge railing transition type TPS-1 details.
See Standard Drawings E 706-TTPP-07 and -08 for concrete bridge railing transition type TPS-2 details.
- See Standard Drawing E 609-TBAE-04 for General Notes.

BILL OF MATERIALS			
Quantities are for one side's RCBA extension			
EPOXY-COATED REINFORCING STEEL			
MARK OR SIZE	NO. OF BARS	LENGTH	WEIGHT
5901	42	4'-2"	
5904	5	16'-7"	
Total Epoxy-Coated Reinforcing Steel			269 LBS
MISCELLANEOUS			
Concrete, Class C			2.7 SYS

INDIANA DEPARTMENT OF TRANSPORTATION

RCBA EXTENSION FOR BRIDGE RAILING TRANSITION TFC, TPF-1, TPF-2, TPS-1, OR TPS-2 SEPTEMBER 2012

STANDARD DRAWING NO. E 609-TBAE-01



/s/ Richard L. VanCleave 09/04/12
SUPERVISOR, ROADWAY STANDARDS DATE
/s/ Mark A. Miller 09/04/12
CHIEF ENGINEER DATE