

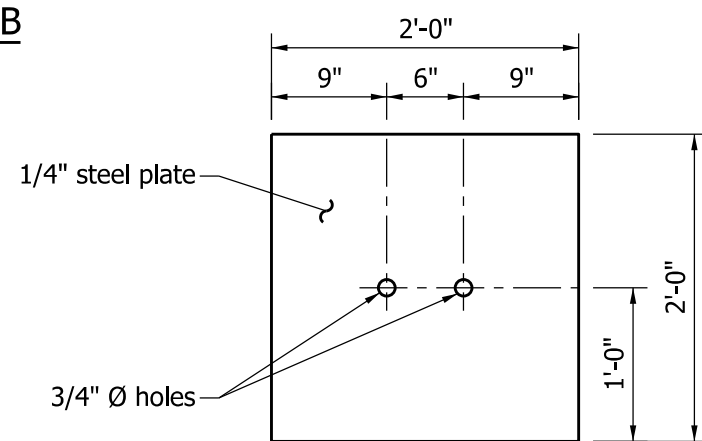
**NOTE:**

- ① The TS 2 1/2" x 2 1/2" structural tube shall be welded to Post B only. See Standard Drawing E 601-CWGS-04 for location of Post B.

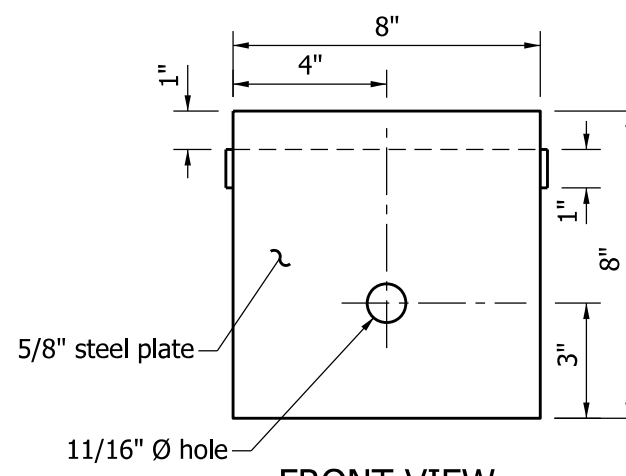
**FRONT VIEW**

**SIDE VIEW**

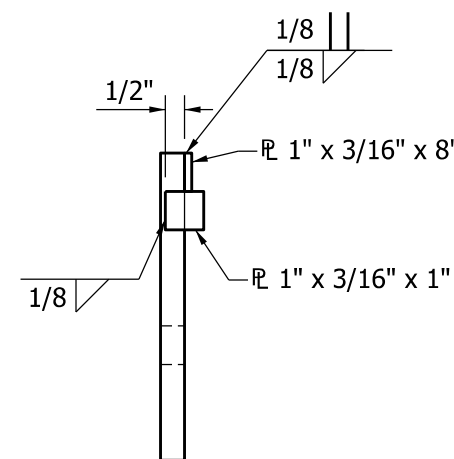
**STEEL TUBE POST B**



**SOIL PLATE**



**FRONT VIEW**



**SIDE VIEW**

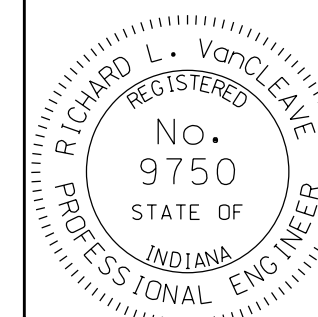
**BEARING PLATE**

INDIANA DEPARTMENT OF TRANSPORTATION

CURVED W-BEAM  
GUARDRAIL SYSTEM

SEPTEMBER 2011

STANDARD DRAWING NO. E 601-CWGS-06



DETAILS PLACED IN THIS FORMAT 09/04/12

/s/ Richard L. VanCleave 09/04/12

SUPERVISOR, ROADWAY STANDARDS DATE

/s/ Mark A. Miller 09/04/12

CHIEF ENGINEER DATE