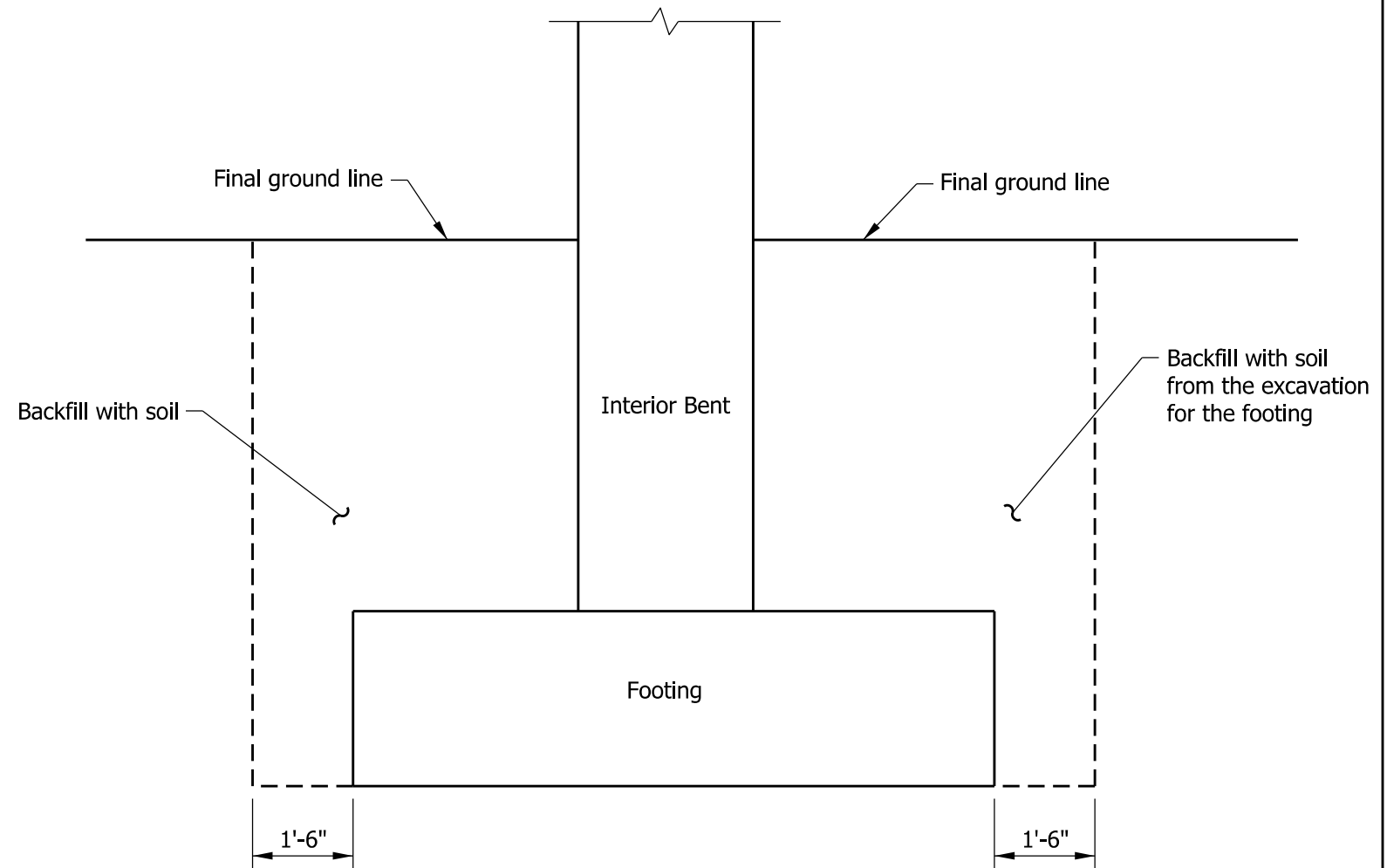


ADJACENT TO RAILROAD OR HIGHWAY



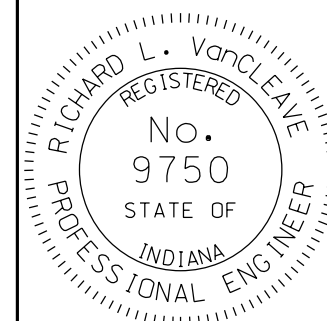
BRIDGE OVER WATERWAY

INDIANA DEPARTMENT OF TRANSPORTATION

BACKFILL PLACEMENT
INTERIOR BENT OR PIER

SEPTEMBER 2003

STANDARD DRAWING NO. E 211-BFIL-03



DETAILS PLACED IN THIS FORMAT	09/04/12
/s/ <i>Richard L. VanCleave</i>	09/04/12
SUPERVISOR, ROADWAY STANDARDS	DATE
/s/ <i>Mark A. Miller</i>	09/04/12
CHIEF ENGINEER	DATE