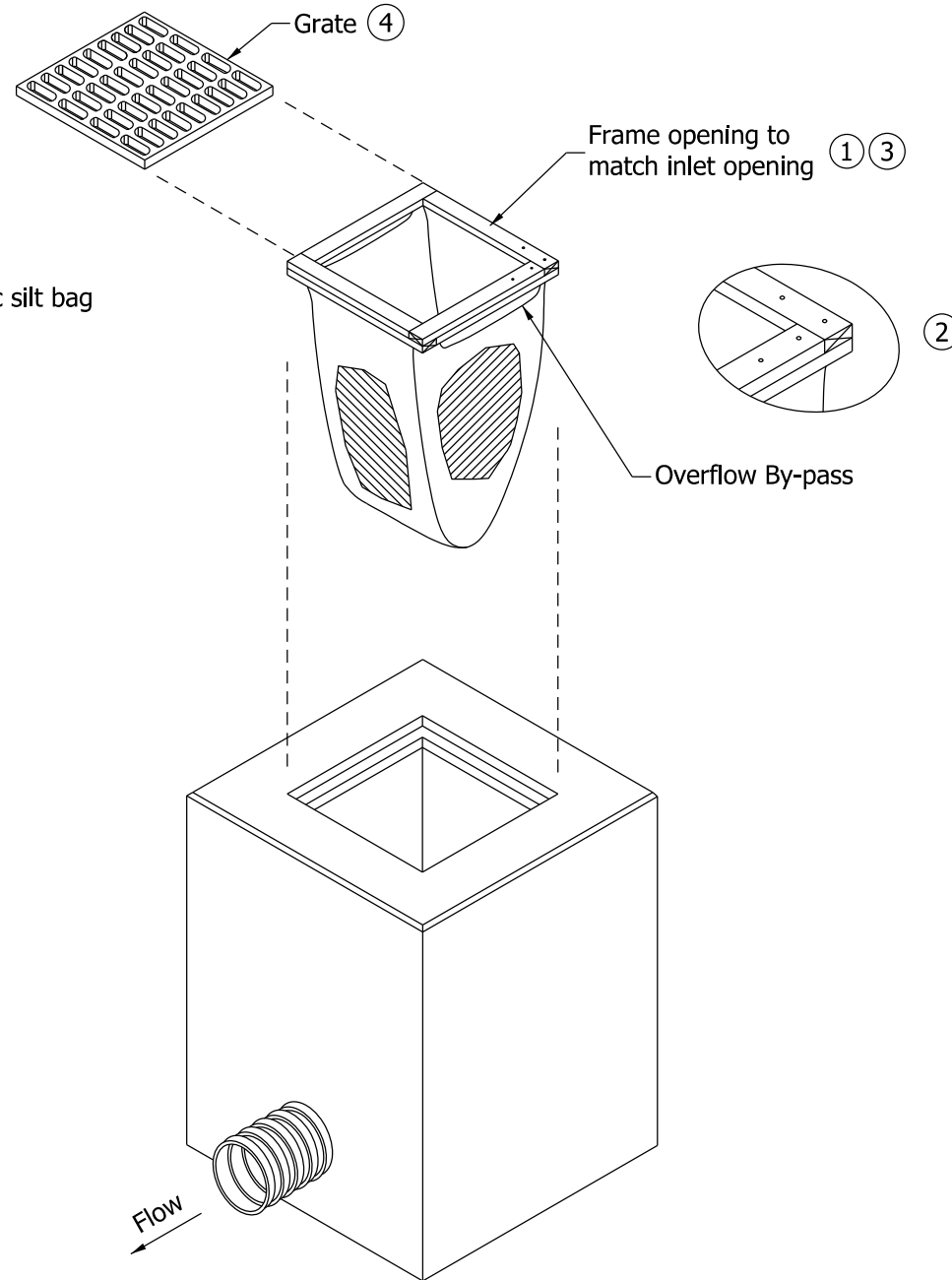


MANUFACTURED



BUILT IN FIELD

NOTES:

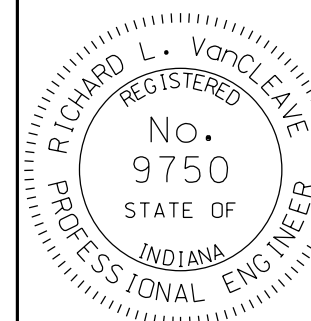
- ① Frame opening sized to match inlet opening.
- ② Geotextile bag shall be fabricated from piece of geotextile 2 times the opening size pushed through opening to form weephole. Secured by nails.
- ③ Frame with bag to be placed over inlet opening.
- ④ Bag frame shall be secured in place by weight of inlet grate. Grate may be rotated 45 degrees to the bag's frame.

INDIANA DEPARTMENT OF TRANSPORTATION

TEMPORARY EROSION CONTROL INLET
BAG PROTECTION

SEPTEMBER 2012

STANDARD DRAWING NO. E 205-TECI-04



/s/ Richard L. VanCleave 09/04/12
SUPERVISOR, ROADWAY STANDARDS DATE

/s/ Mark A. Miller 09/04/12
CHIEF ENGINEER DATE