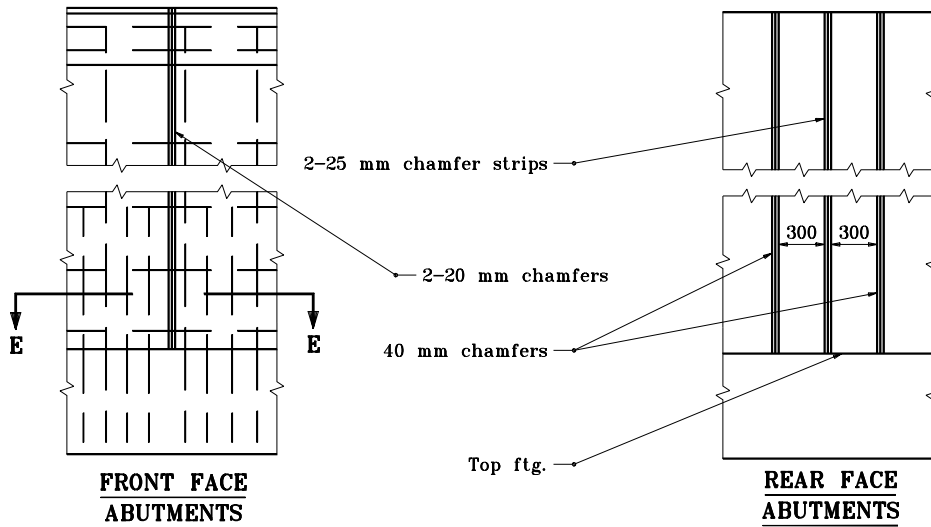


Fabric to cover entire construction joint. Caulk securely into grooves. Fabric and V-Strips to be placed at construction joints in mudwall of R.C.G. superstructures.



All dimensions are in mm unless otherwise specified.

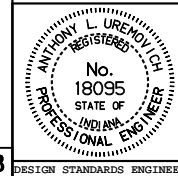
INDIANA DEPARTMENT OF TRANSPORTATION

CONSTRUCTION JOINT

TYPICAL DETAILS

SEPTEMBER 1994

STANDARD DRAWING NO. 724-BJTS-05



/s/ Anthony L. Uremovich 9/30/94
DESIGN STANDARDS ENGINEER DATE

/s/ Donald W. Lucas 9/30/94
CHIEF HIGHWAY ENGINEER DATE

Source Sheet: C-3