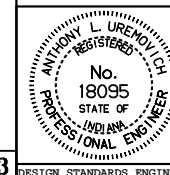


REINFORCING STEEL FOR MANHOLES																
	Manhole Type D				Manhole Type E				Manhole Type F				Manhole Type G			
Bars	Length	No.	Spa.	Size	Length	No.	Spa.	Size	Length	No.	Spa.	Size	Length	No.	Spa.	Size
B	2440	10	230	#16	2440	12	230	#16	2440	16	230	#16	2440	19	230	#16
B ₁	2060	12	230	#16	2590	12	230	#16	3350	12	230	#16	4040	12	230	#16
E	2210	3	50	#16	2210	3	50	#16	2210	3	50	#16	2210	3	50	#16
H	2590	22	150	#16	2590	33	150	#16	2590	41	150	#16	2590	58	150	#16
L	920	16	300	#16	920	16	300	#16	920	16	300	#16	920	16	300	#16
T	380	16	150	#16	920	16	150	#16	1600	16	150	#16	2290	16	150	#16
V	1530	16	150	#16	2060	16	150	#16	2740	16	150	#16	3510	16	150	#16
V ₁	1450	16	150	#16	1980	16	150	#16	2670	16	150	#16	3430	16	150	#16

All dimensions are in mm unless otherwise specified.

INDIANA DEPARTMENT OF TRANSPORTATION
**TABLE OF REINFORCING STEEL
FOR MANHOLES**
SEPTEMBER 1997

STANDARD DRAWING NO. 720-MHST-10



/s/ Anthony L. Uremovich 9-01-97
DESIGN STANDARDS ENGINEER DATE

/s/ Donald W. Lucas 9-01-97
CHIEF HIGHWAY ENGINEER DATE

Source Sheet: MD3

DESIGN STANDARDS ENGINEER