

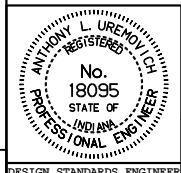
**75 mm x 25 mm CORRUGATED STEEL PIPE (LOCK SEAM)  
HEIGHT OF COVER LIMITS (m)**

	AREA (m <sup>2</sup> )	DIAMETER (mm)	THICKNESS (mm)									
			1.63		2.01		2.77		3.51		4.27	
			MIN.	MAX.	MIN.	MAX.	MIN.	MAX.	MIN.	MAX.	MIN.	MAX.
	0.64	900	0.30	24.7								
	0.87	1050	0.30	21.0	0.30	26.5	0.30	30.5	0.30	30.5		
	1.13	1200	0.30	18.6	0.30	23.2	0.30	30.5	0.30	30.5		
	1.43	1350	0.30	16.6	0.30	20.7	0.30	29.0	0.30	30.5	0.30	30.5
	1.77	1500	0.30	14.6	0.30	18.6	0.30	25.9	0.30	30.5	0.30	30.5
	2.14	1650	0.30	13.4	0.30	16.8	0.30	23.8	0.30	30.5	0.30	30.5
	2.54	1800	0.30	12.2	0.30	15.5	0.30	21.6	0.30	28.0	0.30	30.5
	2.99	1950	0.30	11.5	0.30	14.3	0.30	20.1	0.30	25.9	0.30	30.5
	3.46	2100	0.30	10.4	0.30	13.1	0.30	18.6	0.30	23.8	0.30	29.4
	3.98	2250	0.30	9.8	0.30	12.2	0.30	17.4	0.30	22.3	0.30	27.4
	4.52	2400			0.30	11.6	0.30	16.2	0.30	21.0	0.30	25.6
	5.11	2550			0.32	11.0	0.32	15.4	0.32	19.8	0.32	24.2
	5.73	2700					0.34	14.3	0.34	18.6	0.34	22.9
	6.38	2850					0.36	13.7	0.36	17.7	0.36	21.7
	7.07	3000					0.38	12.8	0.38	16.8	0.38	20.4
	7.79	3150							0.39	16.0	0.39	19.6
	8.55	3300							0.41	15.2	0.41	18.6
	9.35	3450							0.43	14.6	0.43	17.9
	10.18	3600									0.45	17.1

All dimensions are in mm unless otherwise specified.

INDIANA DEPARTMENT OF TRANSPORTATION  
**PIPE HEIGHT OF  
COVER LIMITS**  
JANUARY 1998  
STANDARD DRAWING NO. **715-PHCL-12**

**NOTE:**  
1. The tabulated cover depths shall be measured from the bottom of the bituminous or concrete pavement to the top of the pipe.



/s/ Anthony L. Uremovich 1-02-98  
DESIGN STANDARDS ENGINEER DATE

/s/ Donald W. Lucas 1-02-98  
CHIEF HIGHWAY ENGINEER DATE

**Source Sheet: NONE**