

**SECTION A-A**

**LEGEND**

- ③ Construction joint type D-1. See Standard Drawing E 503-CCPJ-01 for details.
- ④ Longitudinal keyway joint, if pavement is PCCP. See Standard Drawing E 503-CCPJ-04 for details.
- ⑧ Longitudinal contraction joint. See Standard Drawings E 503-CCPJ-07 AND -08 for details.
- ⑨ 1" preformed joint filler
- ⑩ Ear construction type A. See Standard Drawing E 605-ERCN-01 for details.
- ⑪ Ear construction type B. See Standard Drawing E 605-ERCN-02 for details.
- ⑭ Integral concrete curb

L = Minimum longitudinal length of crossover

P = Travel lane or turn lane width

W = Width of median

V.C. = Vertical curve length

= Stabilized shoulder

**GENERAL NOTES :**

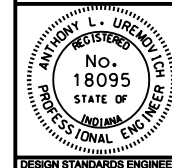
1. The crossover length L is based on a 90° road intersection.
2. PCCP crossover shall be constructed if the cross road approach is concrete  
HMA crossover shall be constructed if the cross road approach asphalt.
3. See Standard Drawings E 610-PRCO-01A through -07 for crossover plans.

INDIANA DEPARTMENT OF TRANSPORTATION

**PUBLIC ROAD CROSSOVER SECTION**

MARCH 2003

STANDARD DRAWING NO. E 610-PRCO-01



*/s/ Anthony L. Uremovich* 3-03-03  
DESIGN STANDARDS ENGINEER DATE

*/s/ Richard K. Smutzer* 3-03-03  
CHIEF HIGHWAY ENGINEER DATE

DESIGN STANDARDS ENGINEER