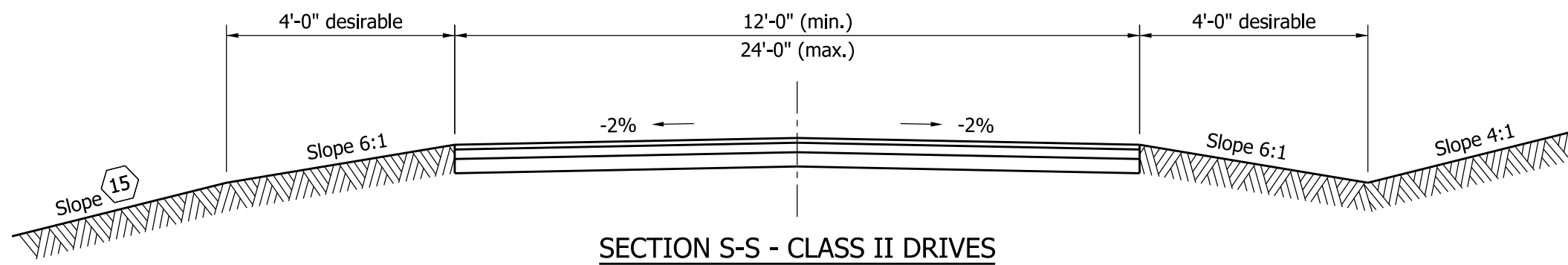
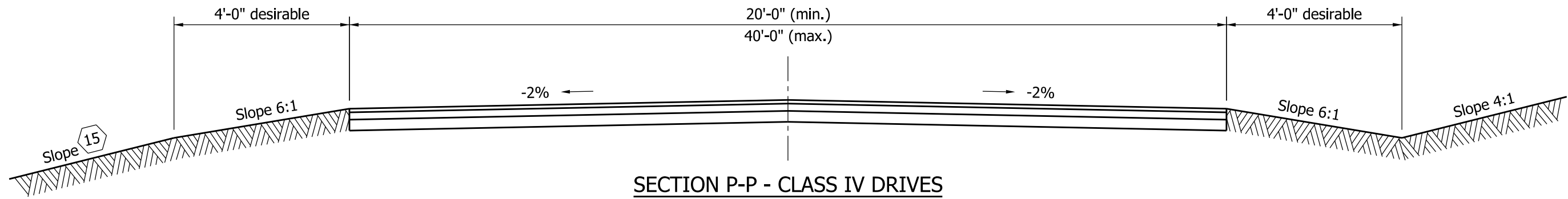


**Notes:**

1. See Standard Drawing E 610-DRIV-02 for Class II Drive details.
2. See Standard Drawing E 610-DRIV-04 for Class IV Drive details.
3. See Standard Drawing E 610-DRIV-13 for General Notes.

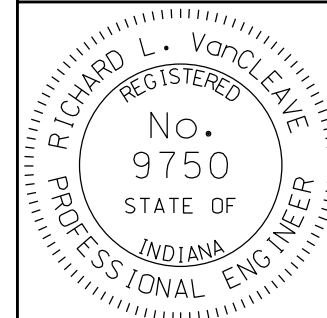


INDIANA DEPARTMENT OF TRANSPORTATION

CLASS II AND CLASS IV  
SECTIONS

SEPTEMBER 2010

STANDARD DRAWING NO. E 610-DRIV-09



DESIGN STANDARDS ENGINEER

*/s/ Richard L. VanCleave* 09/01/10

DESIGN STANDARDS ENGINEER DATE

*/s/ Mark A. Miller* 09/01/10

CHIEF HIGHWAY ENGINEER DATE