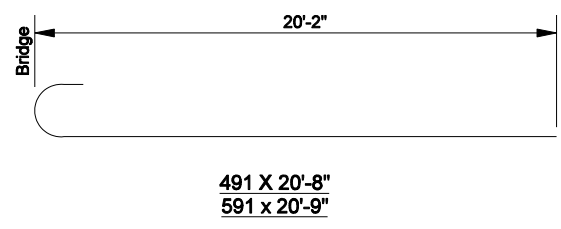
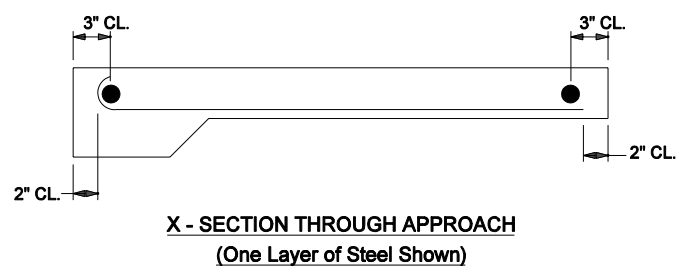


NOTE

1. See Standard Drawing E 609-RCBA-05 for Bill of Materials.
2. All reinforcing bars shall be epoxy coated.



REINFORCEMENT DETAIL FOR SQUARE APPROACH



INDIANA DEPARTMENT OF TRANSPORTATION	
REINFORCED CONCRETE BRIDGE APPROACH	
SEPTEMBER 2006	
STANDARD DRAWING NO. E 609-RCBA-03	
	/s/ Richard L. VanCleave 9-01-06 DESIGN STANDARDS ENGINEER DATE
	/s/ Richard K. Smutzer 9-01-06 CHIEF HIGHWAY ENGINEER DATE
DESIGN STANDARDS ENGINEER	