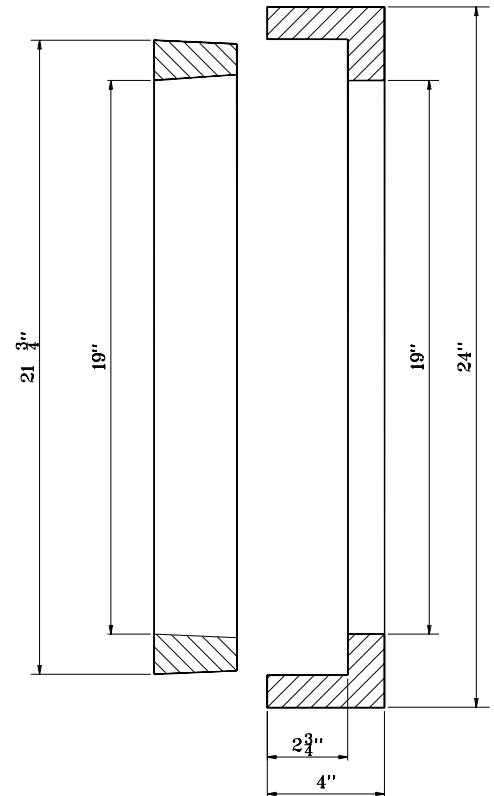


CASTING TYPE II



GENERAL NOTES

1. Casting total weight 440 lb.
2. Casting finish: no paint.

INDIANA DEPARTMENT OF TRANSPORTATION	
CASTING TYPE II	
FRAME AND GRATE	
JANUARY 1999	
STANDARD DRAWING NO. E 720-SDCP-03	
	DETAILS PLACED IN THIS FORMAT 11-15-99
/s/ Anthony L. Uremovich 11-15-99 DESIGN STANDARDS ENGINEER DATE	/s/ Firooz Zandi 11-15-99 CHIEF HIGHWAY ENGINEER DATE
DESIGN STANDARDS ENGINEER	ORIGINALLY APPROVED 1-04-99