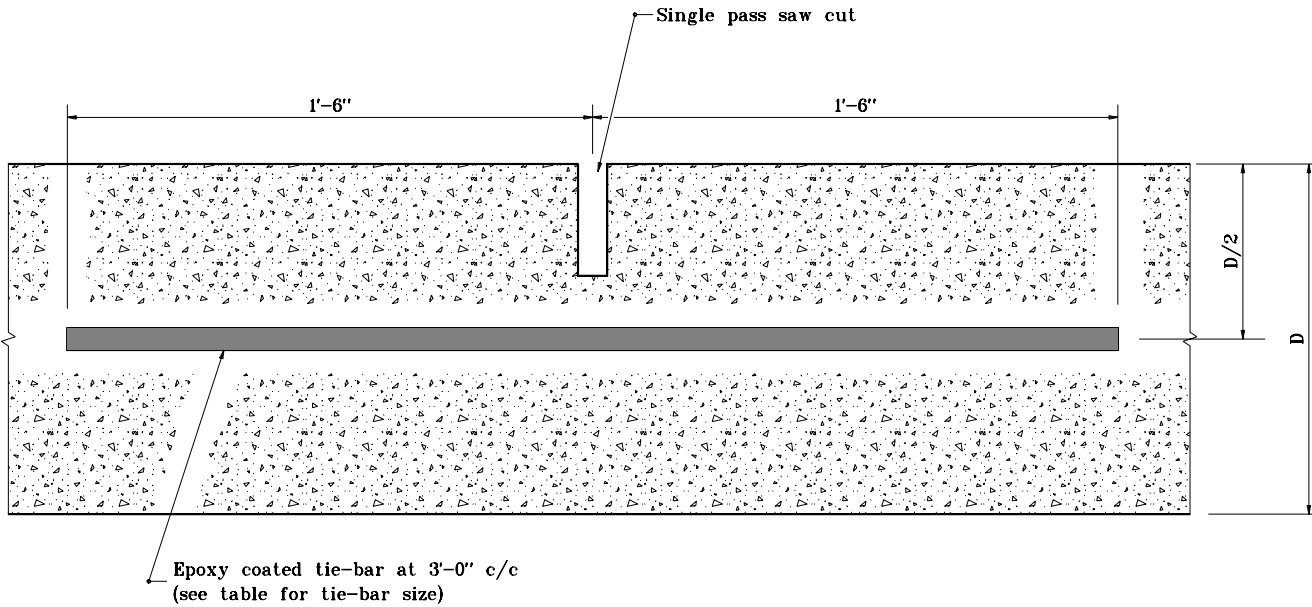


TIE-BAR SIZES FOR LONGITUDINAL JOINT	
Pavement Thickness, D	Tie Bar Size
Less than 9"	#5
9" through 12"	#6
Greater than 12"	#7



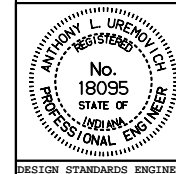
TRANSVERSE SECTION THROUGH CONCRETE PCCP

INDIANA DEPARTMENT OF TRANSPORTATION

LONGITUDINAL JOINT

SEPTEMBER 1999

STANDARD DRAWING NO. **E 503-CCPJ-02**



/s/ Anthony L. Urenovich 9-01-99
DESIGN STANDARDS ENGINEER DATE

/s/ Donald W. Lucas 9-01-99
CHIEF HIGHWAY ENGINEER DATE

DESIGN STANDARDS ENGINEER