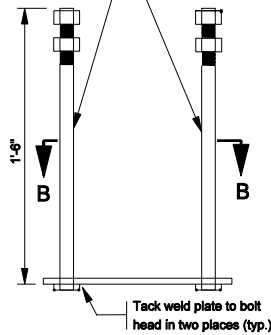
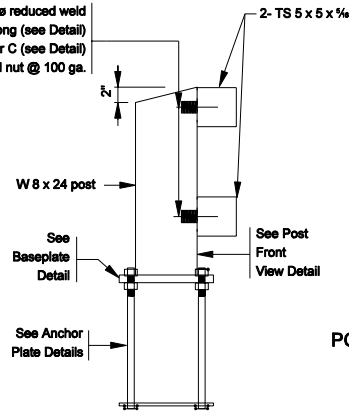


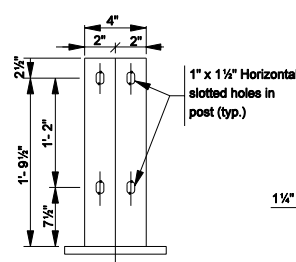
4 - 7/8"  $\phi$  anchor bolts threaded 5" min. with 2 nuts and flat washers



2 - Threaded 3/8"  $\phi$  reduced weld base stud x 2" long (see Detail) w/1-  $\phi$  washer C (see Detail) 1 lock washer and nut @ 100 ga.



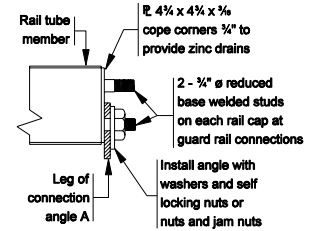
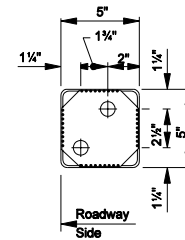
SECTION A - A



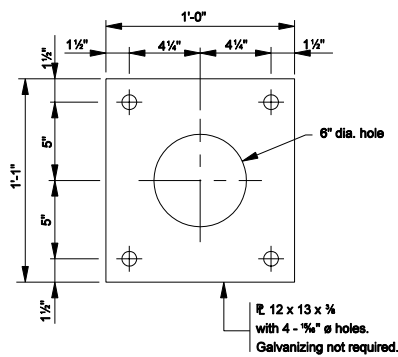
POST FRONT VIEW DETAIL

1

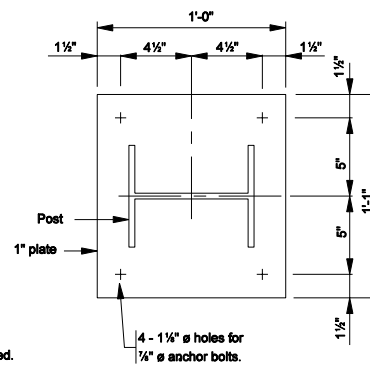
**NOTES:**  
Gap of 1" unless noted otherwise on plans. Railing splice required in panel with a deck expansion joint.



RAIL CAP DETAIL



SECTION B - B  
ANCHOR PLATE DETAILS



BASE PLATE DETAILS

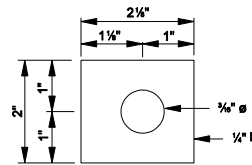
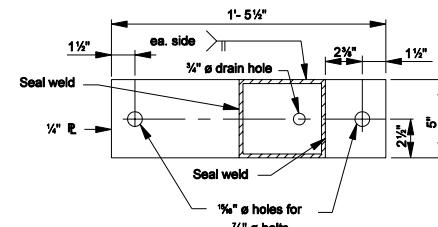
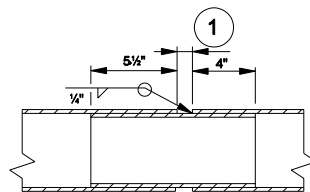


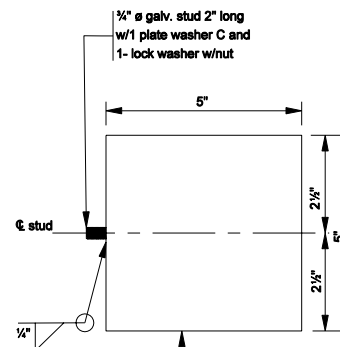
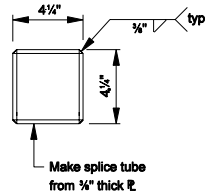
PLATE WASHER C DETAIL



TOP RAIL END VIEW B - B



RAILING SPLICE DETAILS



BASE WELD STUD DETAIL

INDIANA DEPARTMENT OF TRANSPORTATION	
RAILING, CF-1	
MARCH 2006	
STANDARD DRAWING NO. E 706-BRPM-02	
	/s/ Richard L. VanCleave 3-01-06 DESIGN STANDARDS ENGINEER DATE
	/s/ Richard K. Smutzer 3-01-06 CHIEF HIGHWAY ENGINEER DATE
DESIGN STANDARDS ENGINEER	