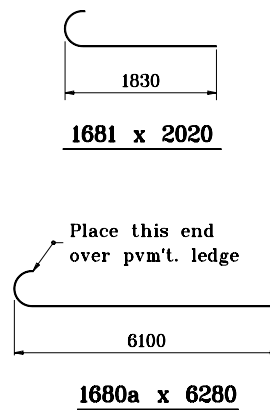
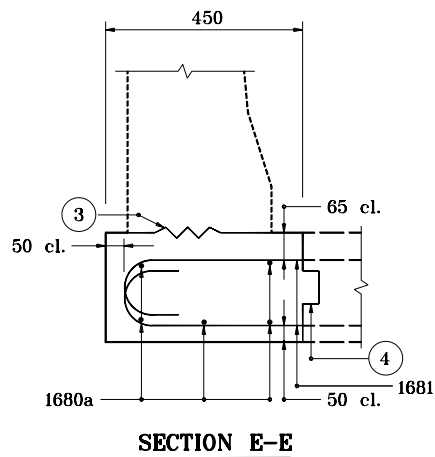
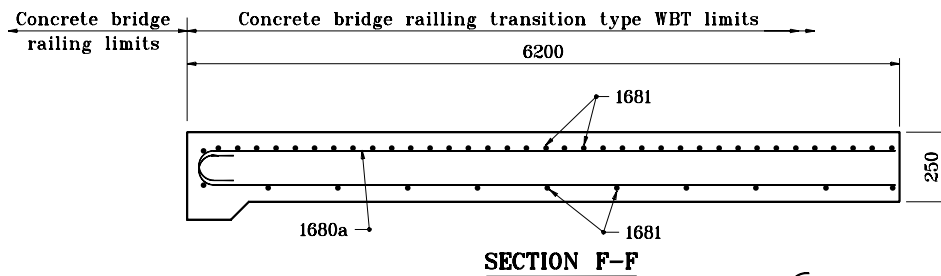
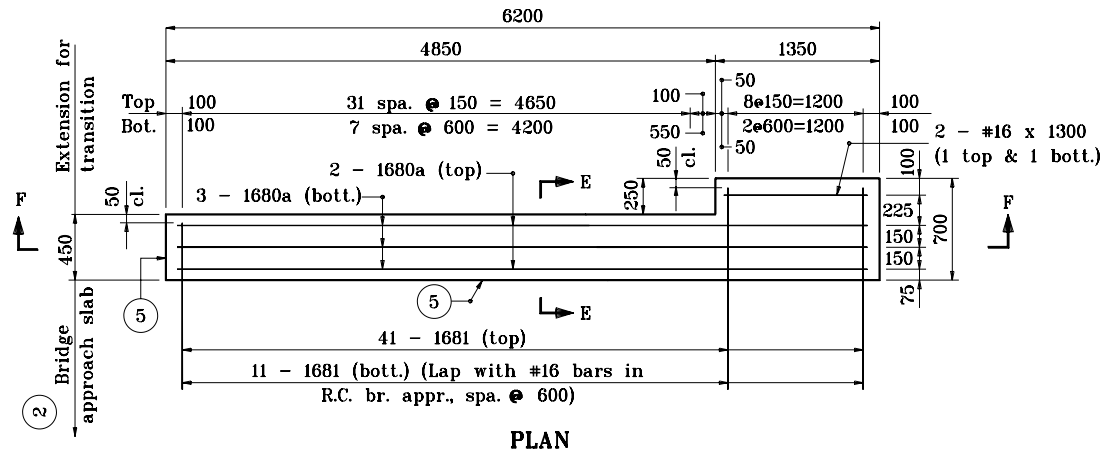


NOTES:

- See Standard Drawing 706-TASE-05 for General Notes.



BILL OF MATERIALS			
These quantities are for one approach slab extension.			
EPOXY COATED REINFORCING STEEL			
Size & type	No. of Bars	Length	Mass (kg)
1680a	5	6280	
1681	52	2020	
#16	2	1300	
Total #16 Bars			216
Total Epoxy Coated Steel			216
MISCELLANEOUS			
250 R.C. Pvm't.			3.1 m ²

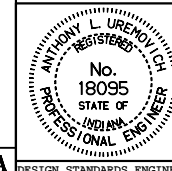
All dimensions are in mm unless otherwise specified.

INDIANA DEPARTMENT OF TRANSPORTATION

**BRIDGE RAILING TRANSITION
WBT SLAB EXTENSION**

SEPTEMBER 1998

STANDARD DRAWING NO. 706-TASE-04



/s/ Anthony L. Uremovich 9-01-98
DESIGN STANDARDS ENGINEER DATE

/s/ Donald W. Lucas 9-01-98
CHIEF HIGHWAY ENGINEER DATE

Source Sheet: BR-2A