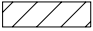




## GENERAL NOTES :

1. These notes are for Standard Drawing 610-DRIV-12, -13, -15, -16.
2. The class VI and VII drives are designed to accomodate a WB-20 (IDV) design vehicle with a 14 m turning radius.
- ⑦ The maximum algebraic difference in grades shall not exceed 8% for crasted grade nor 12% for saged grades.
- ⑧ The minimum driveway pavement section has been designed for 200 trucks per day. If the truck traffic count is greater than 200 per day, the required pavement section shall be as shown elsewhere on the plans.
- ⑨ Driveway embankment slopes within the clear zone for a road functionally classified as follows shall be :
  - a ) 6:1 for an arterial or a high speed (over 65 km/h design speed) collector.
  - b ) 4:1 for a local road or a low speed (65 km/h or lower design speed) collector.
- ⑩ Driveway culverts which cannot be located outside the clear zone shall require grated box end sections at both ends.
- ⑪ Hc - earth cover over culvert or pipe shall be 300 mm or greater.
- ⑫ Curb ramp type G, as shown on Standard Drawing 604-SWCR-09, shall be used when sidewalk is adjacent to curb.
- ⑬ When X is equal to or greater than 600 mm but less than 1500 mm, curb ramp type H as shown on Standard Drawing 604-SWCR-09 shall be used.
- ⑭ When X is equal to or greater than 1500 mm, no curb ramp is required.

## LEGEND

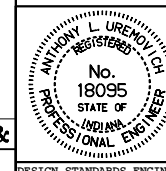
- |  |  |
|--|--|
| ③ Longitudinal joint   | X = Distance between face of curb and sidewalk   |
| ④ Keyway joint   | W = Width of sidewalk  |
| ⑤ 13 mm preformed joint filler                                     |  Cement Concrete Pavement for Driveways |
| ⑥ Monolithic curb  |  Curb ramp                              |
| ⑦ Concrete sidewalk  |  Curb ramp view                         |
| ⑧ For type and thicknes equivalent to surface in place, see plans. |  |
| ⑨ Concrete curb ramp   |  |

All dimensions are in mm unless otherwise specified.

INDIANA DEPARTMENT OF TRANSPORTATION

**CLASS VI AND VII DRIVES**  
**GENERAL NOTES AND LEGEND**  
 SEPTEMBER 1999

STANDARD DRAWING NO. **610-DRIV-14**



/s/ Anthony L. Uremovich 9-01-99  
 DESIGN STANDARDS ENGINEER DATE

/s/ Donald W. Lucas 9-01-99  
 CHIEF HIGHWAY ENGINEER DATE

Source Sheet: MH2B &  
 Source Sheet: MH2A

DESIGN STANDARDS ENGINEER