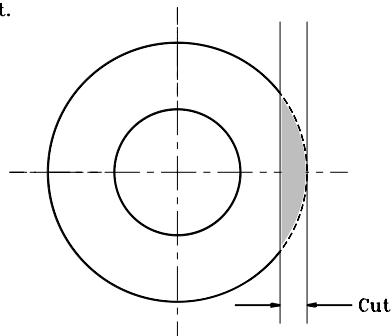
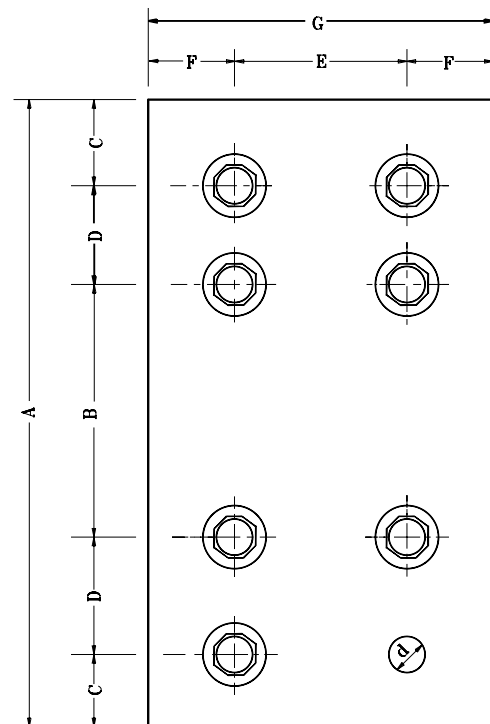


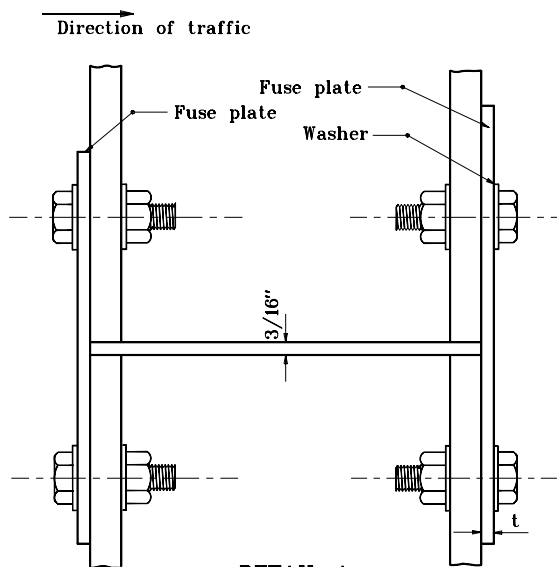
Only washers on the inside of the wide flange (next to web) need to be cut.



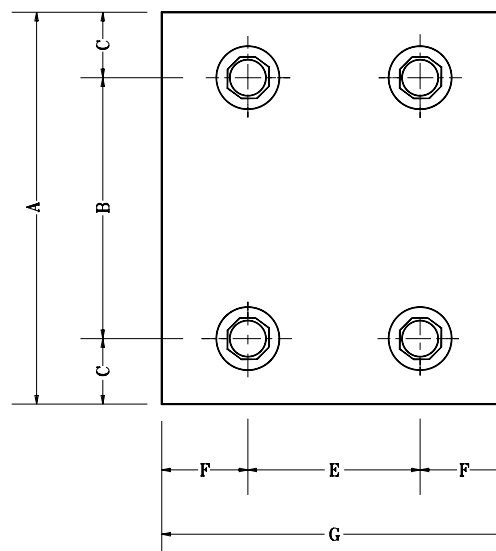
WASHER



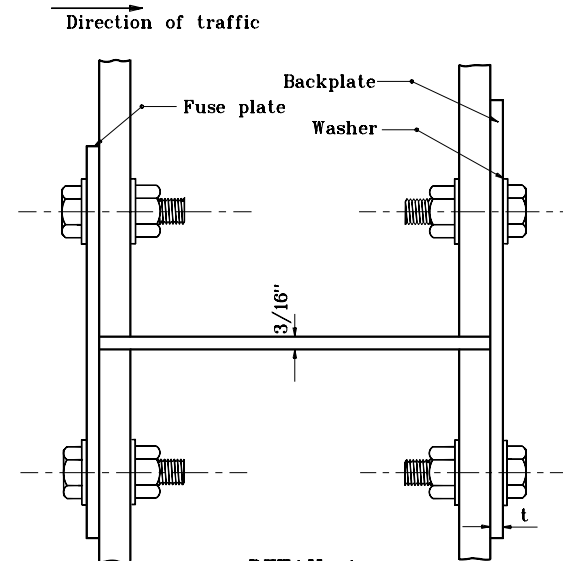
**BACKPLATE DETAIL
(8 Bolts)**



**DETAIL A
FOR NON-DIVIDED HIGHWAY
INSTALLATION**



**BACKPLATE DETAIL
(4 Bolts)**



**DETAIL A
FOR DIVIDED HIGHWAY
INSTALLATION**

GENERAL NOTES

1. For fuse plate details, see Std. Dwg. No. E 802-SNGP-04.

INDIANA DEPARTMENT OF TRANSPORTATION	
PANEL SIGN BACKPLATE DETAILS	
MARCH 1995	
STANDARD DRAWING NO. E 802-SNGP-09	
DETAILS PLACED IN THIS FORMAT	7-27-99
/s/ Anthony L. Uremovich DESIGN STANDARDS ENGINEER	DATE
/s/ Firooz Zandi CHIEF HIGHWAY ENGINEER	DATE
ORIGINALLY APPROVED	3-01-95

ANTHONY L. UREMOWICZ
 No. 18095
 STATE OF INDIANA
 REGISTERED PROFESSIONAL ENGINEER